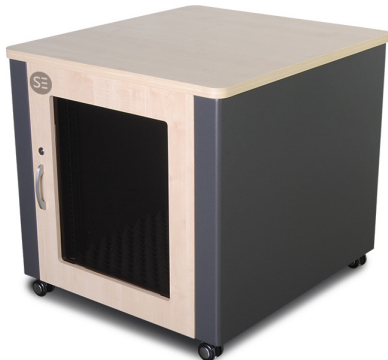


12RU 705MM WIDE & 782MM DEEP FULLY ASSEMBLED ELEMENTARY SOUNDPROOF FREE STANDING PREMIUM OFFICE SERVER RACK

PART NUMBER: **DR-12RU-67FS**



PRODUCT DESCRIPTION

Serveredge DR-12RU-67FS office rack enclosure is the perfect solution for someone who doesn't have the time, budget nor space to build a dedicated IT zone. Presenting a discrete, furniture-like appearance, it is designed to blend into non-IT spaces such as the Home Office, School, AV room, Small Office and Remote Office environments. It is soundproofed with sound attenuation of up to 16 dB(A) to be an even more discrete solution. It is portable, secure, and can be used as a durable worktop that can be utilised for office equipment such as printers or fax machines.

The premium DR series cabinet is packed with features designed to simplify rack equipment installations and rack equipment maintenance: Cable routing glands, efficient airflow, adjustable mounting rails, Single Glass Front door, removable rear door and much more. The DR-12RU-67FS comes with a manufacturer 3 year warranty.

PRODUCT FEATURES

- Cost-effective furniture rack includes advanced features for reliability
- MDF construction with Metal internal fittings
- Soundproofing with sound attenuation of up to 16dB(A)
- Weight capacity of 250Kg
- Comes fully assembled
- Audible Noise is 46dBA at 1 Metre (Environmental)
- 2 ultra-quiet rear fan panel
- Conforms to Standard ANSI/EIA RS-310-D, IEC297-2, DIN4191; PART1, DIN4194; PAT7, GB/T3047M 2-92
- Warranty : 3-year

GUARANTEE/WARRANTY

Serveredge products are manufactured at the highest standards using highest quality materials at an affordable price. This Serveredge product comes with Lifetime warranty for that extra piece of mind. Subject to Serveredge Terms and Conditions*

PRODUCT SPECIFICATION

Installed whole system maximum rack depth (mm) :	682.0
Rack Height :	12RU
Shipping Dimensions (WDH/mm) :	720 X 797 X 741
Shipping weight (kg) :	72
Unit Dimensions (WDH/mm) :	705 X 782 X 726
Unit weight (kg) :	59.68
Noise Attenuation:	16dB(A)
Colour :	Beech
Weight Capacity - Stationary (kg) :	250
Grounding lug :	Front and Back Door Frames

PACKAGE INCLUDES

- 1 x DR-12RU-67FS Free Standing Elementary
- Soundproof Office Server Rack
- 2 x Keys
- 4 x Castors