

9RU 600MM WIDE & 550MM DEEP

FULLY ASSEMBLED WALL MOUNT SWING FRAME SERVER CABINET

PART NUMBER: **CBN-9RU-66WM**

BAR CODE: **9350784001245**



PRODUCT DESCRIPTION

Serveredge Wall Mount cabinets and rack enclosures are perfect for storing your standard rack mount equipments on wall in various locations such as wiring receptacles, POS stations and offices where you have access to very limited floor space. This Serveredge rack is made up of sturdy wall mounting bracket and steel frame. Vertical Mounting Rails in the rack are adjustable and can accommodate all standard 19 inch rack equipment. These Serveredge wall mount racks feature a toughened & tempered lockable glass door with perforated side panels to assure a generous airflow to keep your equipment operating safely. Side Panels of this rack are lockable & removable to ensure easy access to the mounted devices. The top and bottom panels of this rack include convenient cable routing ports. The rack ships fully assembled and comes with a 25 Year manufacturer's product warranty.

GUARANTEE/WARRANTY

Serveredge products are manufactured at the highest standards using highest quality materials at an affordable price. This Serveredge product comes with 25 Years Warranty for that extra peace of mind. Subject to Serveredge Terms and Conditions*

PRODUCT INCLUDES

Serveredge Wall Mount Rack Enclosure	× 1
M6 screws	× 20
M6 cage nuts	× 20
M6 washers	× 20
Cantilever Shelf	× 1
Keys	× 2
Castors (Optional)	× 4

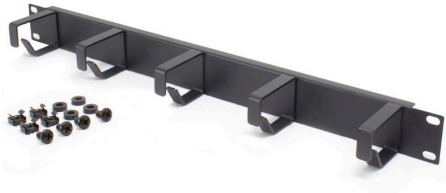
PRODUCT FEATURES

- Designed for limited space environments where equipment needs to be secure and out of the way
- Adjustable front vertical rack mount rails
- Locking, reversible front door and locking, removable side panels
- Hinged cabinet version swings away from the wall for ease of equipment installation
- Dual fan cutouts
- Gland Plates at top and bottom for cable routing
- Fully assembled for quick installation
- Conform to Standard ANSI/EIA RS-310-D, IEC297-2, DIN4191; PART1, DIN4194; PAT7, GB/T3047M 2-92
- 25 Year Warranty*

PRODUCT SPECIFICATION

Rack Height	9RU
Shipping Dimensions (WDH/mm)	660 X 610 X 545
Shipping weight (kg)	25
Unit Dimensions (WDH/mm)	600 X 550 X 514
Unit weight (kg)	24
Colour	Black
Weight Capacity - Stationary (kg)	80
Grounding lug	Front and Back Door Frames
Cantilever Shelf depth (mm)	300
Preset Mounting Distance (front to rear mounting rails) (mm)	305
Maximum Mounting Distance (front to rear mounting rails) (mm)	550
Minimum Mounting Distance (front to rear mounting rails) (mm)	145

SERVER RACK ACCESSORIES



1RU HORIZONTAL 5 RINGS METAL CABLE MANAGEMENT RAIL

PART NUMBER : [CMR-01-5R](#), [CMR-01-4R](#)



1RU HORIZONTAL 12 SLOTS METAL CABLE MANAGEMENT RAIL

PART NUMBER : [CMR-01-12](#)



1RU HORIZONTAL 24 SLOTS CABLE MANAGEMENT RAIL

PART NUMBER : [CMR-1RU-24](#), [CMR-2RU-24](#)



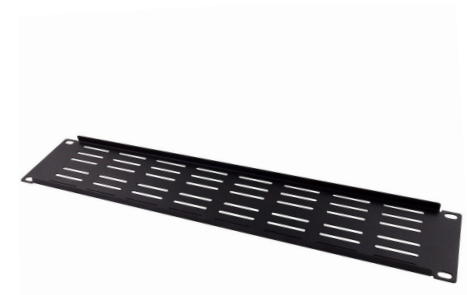
Heavy Duty M6 Cage Nuts, Washer & Screw Set : Pack of 100 : BLACK

PART NUMBER : [CB-1P-BK-50](#), [CB-1P-BK-100](#)



XXRU 19" BLANKING PANEL

PART NUMBER : [BP-XX](#)
(XX = Number 01, 02, 03, 04)



XXRU 19" VENTED BLANKING PANEL

PART NUMBER : [BP-XXV](#)
(XX = Number 01, 02, 03, 04)