

# SERVEREDGE SLIDING TRAY - RACK MOUNT FIBRE ENCLOSURES

1, 2 & 3 RU FIBRE SLIDING PATCH PANELS WITH SPLICE CASSETTE, SPLICE PROTECTOR & MOUNTING KIT

PART NUMBER: [SAFP-01](#) [SAFP-02](#) [SAFP-03](#)



SAFP-01



SAFP-02



SAFP-03

## PRODUCT DESCRIPTION

Serveredge produces a range of rack mount fibre management enclosures, that integrate seamlessly with the Serveredge range of pigtailed and through adapters.

The SAFP series of fibre management and termination enclosures are perfectly suited for densely populated server and telecommunications racks where rear cable movement can become problematic.

Available in 1RU, 2RU and 3RU sizes and equipped to support a range of connector and cable types, these enclosures are suitable for a variety of networking applications.

## PRODUCT APPLICATIONS

- Fusion splicing of loose tube or tight buffered cable
- LAN, SAN and data centre fibre management
- Fibre management for densely populated communications racks
- Direct termination of fibre cables

### SAFP-01

- Accommodates 2 Modular Face Plate Panels

### SAFP-02

- Accommodates 4 Modular Face Plate Panels

### SAFP-03

- Accommodates 6 Modular Face Plate Panels

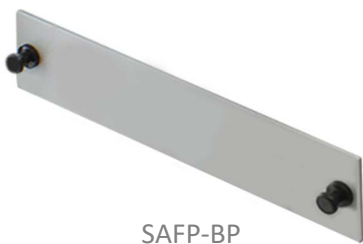
## PRODUCT FEATURES

- Rugged powdercoated aluminium and steel construction ensures product durability
- Four rear cable entry points with cable fastening clamps and cable strength member fixations for additional support
- Range of panel and faceplate options to suit a broad variety of fibre types and adapter styles
- Double sliding rails and unique latching system ensure excellent internal access is available and maintained while terminating
- Multiple cable entry locations helps ensure the enclosure is suitable for a range of incoming cable variations
- Adjustable mounting ears allow for a variety of rack positioning options
- Includes splice cassette, splice protectors & mounting kit

**TECHNICAL SPECIFICATIONS**

Part Number	SAFP-01	SAFP-02	SAFP-03
Description	1RU 2 Panel Fixed Entry Sliding Enclosure	2RU 4 Panel Fixed Entry Sliding Enclosure	3RU 6 Panel Fixed Entry Sliding Enclosure
Dimensions WxHxD (mm)	444 x 44 x 320	444 x 88.5 x 320	444 x 133.5 x 320
Weight (kg)	3.75	4.20	5.75
Port Capacity (max)	24 SC, ST, FC (48 LC) 24	48 SC, ST, FC (96 LC)	72 SC, ST, FC (144 LC)
Splice Capacity (max)	(48 HD)	48 (96 HD)	96 (192 HD)
Material and colour	Two-tone grey powdercoated 1.6mm steel & 2.0mm aluminium		

**ACCESSORIES**



SAFP-BP

SERVEREDGE Solid Metal Blank Face Plate



SAFP-LC6

SERVEREDGE 6 Port LC Duplex Face Plate



SAFP-LC12

SERVEREDGE 12 Port LC Duplex Face Plate



SAFP-SC6

SERVEREDGE 6 Port SC Duplex Face Plate



SAFP-ST6

SERVEREDGE 6 Port ST Face Plate



SAFPST12

SERVEREDGE 12 Port ST Face Plate



SAFS-T1

Fibre Optic Splice Cassette



SAFP-40MM

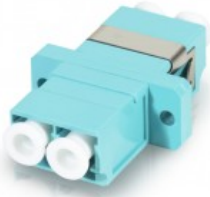
Fibre 40mm Heat Fusion Splice Protector (100 Pk)



SAFP-60MM

Serveredge Fibre 60mm Heat Fusion Splice Protector (100 Pk)

**THROUGH ADAPTERS**



**LC-ADP-OM4**

LC FEMALE TO LC FEMALE MULTI MODE DUPLEX OM4 FIBRE ADAPTOR - AQUA COLOUR



**LC-ADP-OM3**

LC FEMALE TO LC FEMALE MULTI MODE DUPLEX OM3 FIBRE ADAPTER



**LC-ADP-OM1**

LC FEMALE TO LC FEMALE MULTI MODE DUPLEX OM1 FIBRE ADAPTER



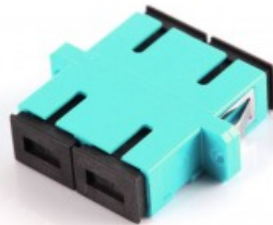
**LC-ADP-OS2**

LC FEMALE TO LC FEMALE SINGLE MODE DUPLEX OS2 FIBRE ADAPTER - BLUE COLOR



**SC-ADP-OM4**

SC FEMALE TO SC FEMALE MULTI MODE DUPLEX OM3 FIBRE ADAPTER



**SC-ADP-OM3**

SC FEMALE TO SC FEMALE MULTI MODE DUPLEX OM3 FIBRE ADAPTER



**SC-ADP-OM1**

SC FEMALE TO SC FEMALE MULTI MODE DUPLEX OM1 FIBRE ADAPTER



**SC-ADP-OS2**

SC FEMALE TO SC FEMALE SINGLE MODE DUPLEX OS2 FIBRE ADAPTER



**ST-ADP-OM**

ST FEMALE TO ST FEMALE MULTI MODE SIMPLEX FIBRE ADAPTER



**ST-ADP-OS1**

ST FEMALE TO ST FEMALE SINGLE MODE SIMPLEX FIBRE ADAPTER



**LCA-ADP-OS2**

LCA/F TO LCA/F SINGLE MODE DUPLEX OS2 FIBRE ADAPTER



**SCA-ADP-OS2**

SCA FEMALE TO SCA FEMALE SINGLE MODE DUPLEX OS2 FIBRE ADAPTER



**SC-ADPS-OM3**

SC FEMALE TO SC FEMALE MULTI MODE SIMPLEX OM3 FIBRE ADAPTER



**SC-ADPS-OS2**

SC FEMALE TO SC FEMALE SINGLE MODE SIMPLEX OS2 FIBRE ADAPTER



**SCA-ADPS-OS2**

SCA FEMALE TO SCA FEMALE SINGLE MODE SIMPLEX OS2 FIBRE ADAPTER

**PIGTAILS OM4**



LCPT-OM4-02-06  
LC PIGTAIL OM4 SX 2 METRE - 6 COLOUR



LCPT-OM4-02-06-AQ  
LC PIGTAIL MULTIMODE OM4 - 2 METRE - 6 FIBRES - AQUA



LCPT-OM4-02-12  
LC PIGTAIL OM4 SX 2 METRE - 12 COLOUR



SCPT-OM4-02-06  
SC PIGTAIL OM4 - 2 METRE - 6 FIBRES - MULTI-COLOUR



SCPT-OM4-02-12  
SC PIGTAIL OM4 SX 2 METRE - 12 COLOUR

**PIGTAILS OM3**



LCPT-OM3-02-06  
LC PIGTAIL OM3 SX 2 METRE - 6 COLOUR



LCPT-OM3-02-06-AQ  
LC PIGTAIL OM3 - 2 METRE - 6 FIBRES - AQUA



LCPT-OM3-02-12  
LC PIGTAIL OM3 SX 2 METRE - 12 COLOUR



SCPT-OM3-02-06  
SC PIGTAIL OM3 SX 2 METRE - 6 COLOUR



SCPT-OM3-02-06-AQ  
SC PIGTAIL MULTIMODE OM3 - 2 METRE - 6 FIBRES - AQUA



SCPT-OM3-02-12  
SC PIGTAIL OM3 SX 2 METRE - 12 COLOUR



STPT-OM3-02-12  
ST PIGTAIL OM3 2 METRE - 12 COLOUR



STPT-OM3-02-06  
ST PIGTAIL OM3 2 METRE - 6 COLOUR



STPT-OM3-02-06-AQ  
ST PIGTAIL MULTIMODE OM3 - 2 METRES - 6 FIBRES - AQUA

**PIGTAILS OM1**



LCPT-OM1-02-06  
LC PIGTAIL OM1 SX 2 METRE - 6 COLOUR



LCPT-OM1-02-12  
LC PIGTAIL OM1 SX 2 METRE - 12 COLOUR



SCPT-OM1-02-06  
SC PIGTAIL OM1 SX 2 METRE - 6 COLOUR



SCPT-OM1-02-12  
SC PIGTAIL OM1 SX 2 METRE - 12 COLOUR



STPT-OM1-01-06  
ST PIGTAIL OM1 SX 1 METRE - 6 COLOUR



STPT-OM1-01-12  
ST PIGTAIL OM1 SX 1 METRE - 12 COLOUR



STPT-OM1-02-12  
ST PIGTAIL OM1 - 2 METRE - 12 COLOUR

**PIGTAILS OS2**



**LCAPT-OS2-02-06**  
LCA PIGTAIL OS2 - 2 METRE  
- 6 COLOUR



**LCAPT-OS2-02-12**  
LCA PIGTAIL OS2 - 2 METRE  
- 12 COLOUR



**LCPT-OS2-02-06**  
LC PIGTAIL OS2 2 METRE  
- 6 COLOUR



**LCPT-OS2-02-12**  
LC PIGTAIL OS2 - 2 METRE  
- 12 COLOUR



**SCAPT-OS2-02-06**  
SCA PIGTAIL OS2 - 2 METRE  
- 6 COLOUR



**SCAPT-OS2-02-12**  
SCA PIGTAIL OS2 - 2 METRE  
- 12 COLOUR



**SCPT-OS2-02-06**  
SC PIGTAIL OS2 SX 2 METRE  
- 6 COLOUR



**SCPT-OS2-02-12**  
SC PIGTAIL OS2 - 2 METRE  
- 12 COLOUR



**STPT-OS2-02-06**  
ST PIGTAIL OS2 SX 2 METRE  
- 6 COLOUR



**STPT-OS2-02-12**  
ST PIGTAIL OS2 SX 2 METRE  
- 12 COLOUR



**STPT-OS2-02-12**  
ST PIGTAIL OS2 SX 2 METRE  
- 12 COLOUR