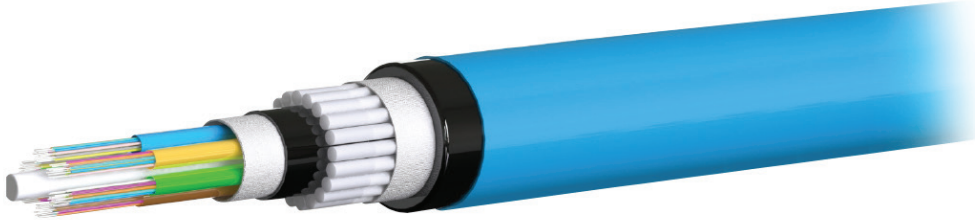


FRP ARMoured LOOSE TUBE FIBRE OPTIC CABLE

PART NUMBER: PTL-XXC-YYY-FRP



PRODUCT DESCRIPTION

SERVEREDGE nylon jacket dielectric armoured rodent proof loose tube fibre cable is suited to external underground installations in ducts by pulling, jetting or floating techniques or by direct burial in open-cut trenches. FRP armoured loose tube is particularly suited to areas where rodents are an issue. Loose tube cable offers a cost-effective and rugged solution for medium and long distance external fibre runs. SERVEREDGE nylon jacket dielectric rodent proof loose tube cable is available in OM3 and Singlemode.

PRODUCT FEATURES

- Bonded double jacketed construction
- Protective peripheral fibreglass reinforced polymer strength members provide excellent strength and complete protection from rodents
- Insect resistant nylon outer and UV stabilised polyethelene inner jacket for long life in a wide range of installations
- Water swellable yarns provide protection against water ingress (dry core construction)
- Non-metallic construction
- Fibreglass reinforced polymer central strength member
- Flexible buffer tubes provide easy handling within termination enclosures
- Single layer SZ stranding limits stress on fibre tubes
- Fibre friendly thixotropic gel in tubes ensures fibre protection
- TIA 598 standard colour code
- 12 fibre tube construction
- Complies with relevent ITU and IEC standards and specifications

APPLICATIONS

- Underground ducts
- Direct buried fibre links
- Inter-building links
- Campus fibre networks
- Infrastructure and industrial fibre links

COLOUR CODING

Colour of Fibres in a Tube	Blue, Orange, Green, Brown, Slate, White, Red, Black, Yellow, Violet, Pink, Aqua.
Colour of Loose Tubes	Blue & 5 Nos PE Black Filler

GUARANTEE/WARRANTY

Serveredge products are manufactured at the highest standards using highest quality materials at an affordable price. This Serveredge product comes with a 2 year warranty standalone or a 25 years warranty as part of a certified structured cabling project. Subject to Serveredge Terms and Conditions*

MECHANICAL CHARACTERISTICS

Temperature Range (IEC 60794-1-2-F1)	Laying and Installation	-20° to +70°C
	Operation	-20° to +70°C
	Transport and Storage	-20° to +70°C
Cable Bending Radius (IEC 60794-1-2-E11A)	20 x D, D = Cable Diameter	
Repeated Bending (IEC 60794-1-2-E6)	30 Cycle, r= 20 X D, 10 Kg Load, D = Cable Diameter	
Tensile Force (IEC 60794-1-2-E1)	6000 N	
Crush Resistance (IEC 60794-1-2-E3)	4000N (100 X 100 mm)	
Impact Resistance (IEC 60794-1-2-E4)	5 kg, From 0.5 meter Height	
Water Penetration (IEC 60794-1-2-F5B)	1 Mtr Water Head, 3 Meter Cable Sample, 24 Hours	

OPTICAL CHARACTERISTICS

Multimode		Singlemode	
at 850 nm	< 3.5 dB/Km	at 1310 nm	< 0.35 dB/Km
at 1300 nm	< 1.5 dB/Km	at 1550 nm	< 0.21 dB/Km

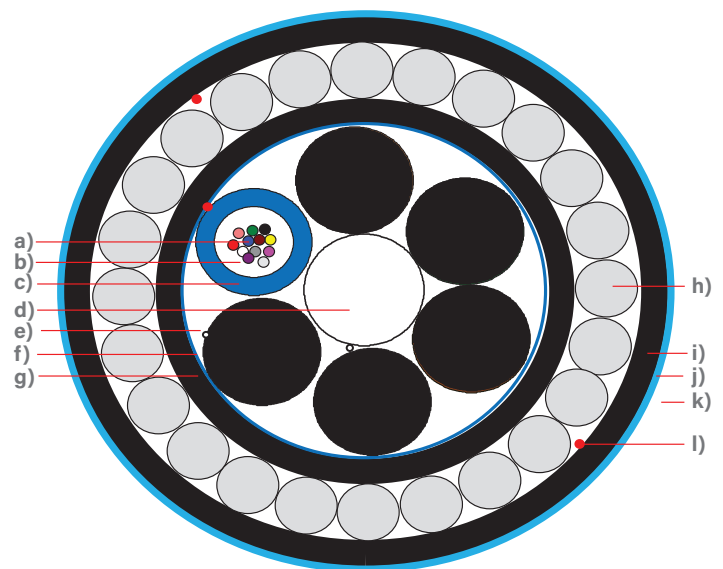
DELIVERY INFORMATION

Approx Cable Weight (Kg/Km)	250
Nominal Cable Diameter (mm)	18.2 ± 1.0
Standard Length per Drum (Mtr)	2000 ± 10 %

CABLE CONSTRUCTIONAL DETAILS

a) Primary Coated Fibre	Multimode / Singlemode
b) Tube Filling Compound	Thixotropic Jelly
c) Loose Tube(s)	PBTP
d) Central Strength Member	FRP Rod
e) Cable Water Blocking in core	Water Swellable Yarn Over CSM
f) Core Wrapping	Water Swellable Tape
g) Inner Sheath	HDPE, Black
h) Armouring	FRP ROD
i) Outer Sheath	HDPE, Black
j) Jacket	Nylon, Blue
k) Rip Cords	3 Ply, suitable to rip open sheath

CROSS SECTION



ORDERING INFORMATION

ORDER CODE	DESCRIPTION
PTL-12C-OS2-FRP	12 Core Loose Tube Gel Filled Rodent Resistant FRP Singlemode OS2 Fibre Cable-Blue
PTL-12C-OM3-FRP	12 Core Loose Tube Gel Filled Rodent Resistant FRP Multimode OM3 Fibre Cable- Blue