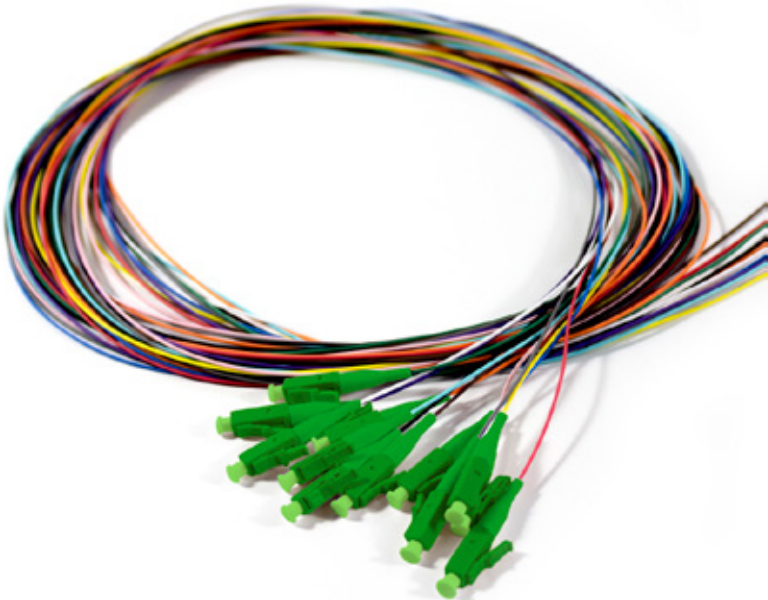


LCA PIGTAIL MULTIMODE OS2 - 2M, 12 FIBRES, MULTI-COLOUR

PART NUMBER: LCAPT-OS2-02-12



PRODUCT DESCRIPTION

Serveredge Fibre Pigtails are used to connect high-speed networks like gigabit ethernet, fast ethernet and ethernet. The singlemode pigtail buffer conforms to IEC, EIA TIA standards and is terminated with standard connectors which give optimum optical performance.

These pigtail leads are used in patch panel terminations, with the fibre end of the pigtail being spliced onto the fibre run, and the connector is inserted in a coupler/adaptor on the patch panel. The connector on the pigtail has been pre-tested and certified in a controlled environment.

PRODUCT FEATURES

- *Supports high-speed multi-channel data, voice & video applications
- *Networks including Ethernet, Fast Ethernet and GBE
- *Ideal for a wide range of telecom, data-com and process control applications.
- *UL approved fibre optic cables

PRODUCT SPECIFICATION

Connector Type:	LCA
Fibre Mode:	OS2
Length:	2m
Fibre Leads:	12
Color:	Multi-Colour