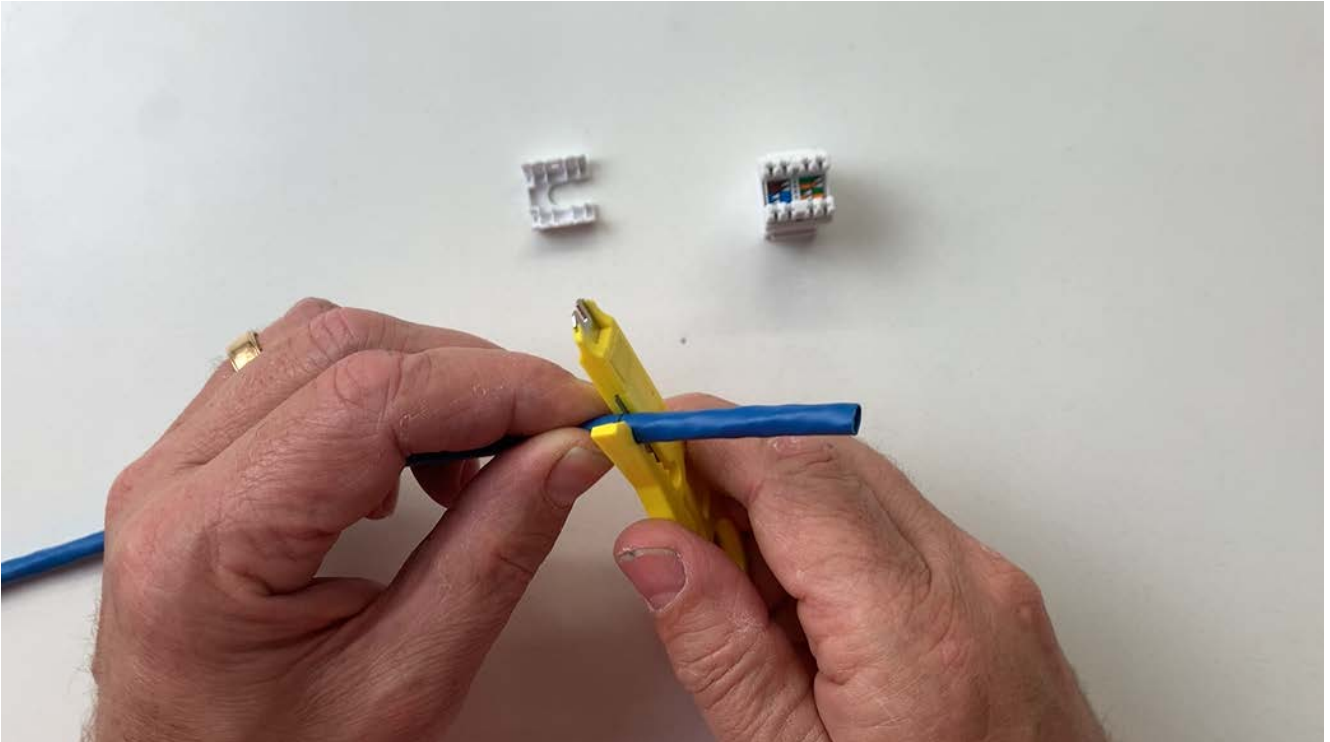


SERVEREDGE KSUC6Q-XXWH KEYSTONE JACK TERMINATION INSTRUCTIONAL

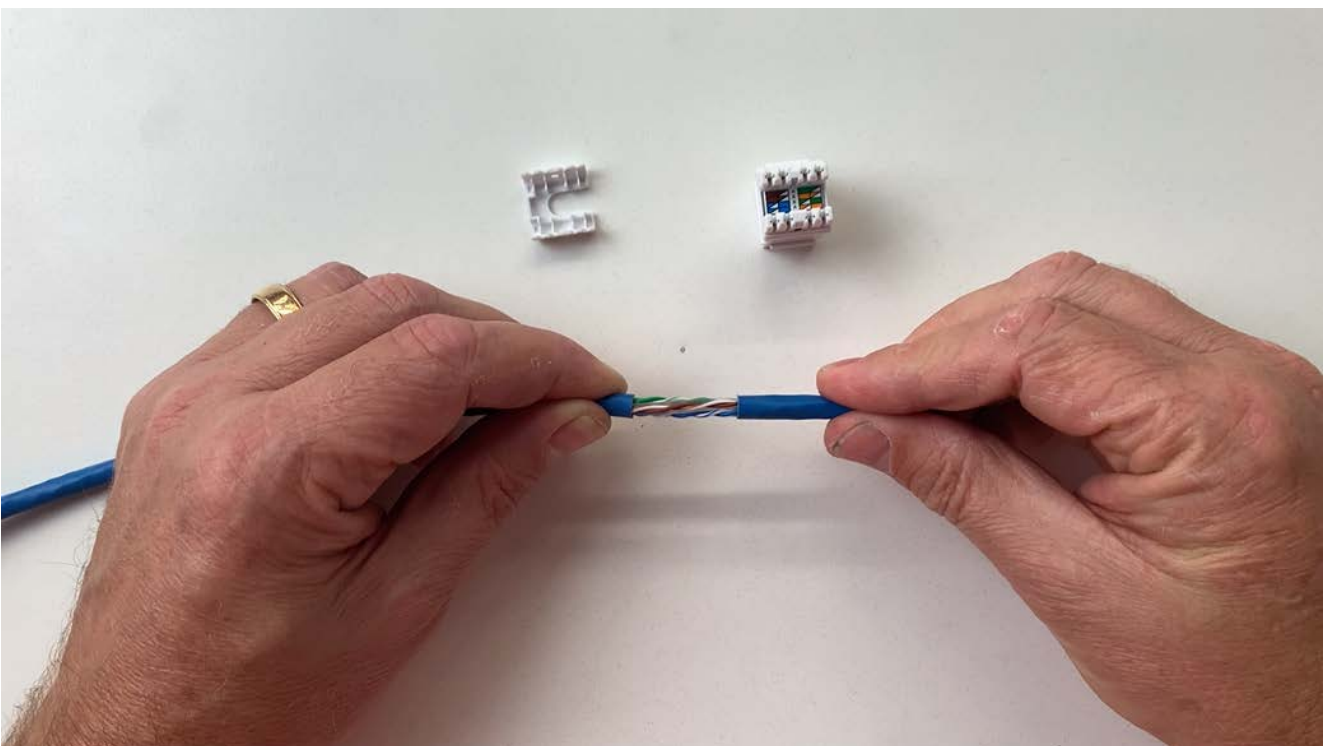
STAGE 1.

Using a cable stripper, strip back approx 50mm of the outer sheath.



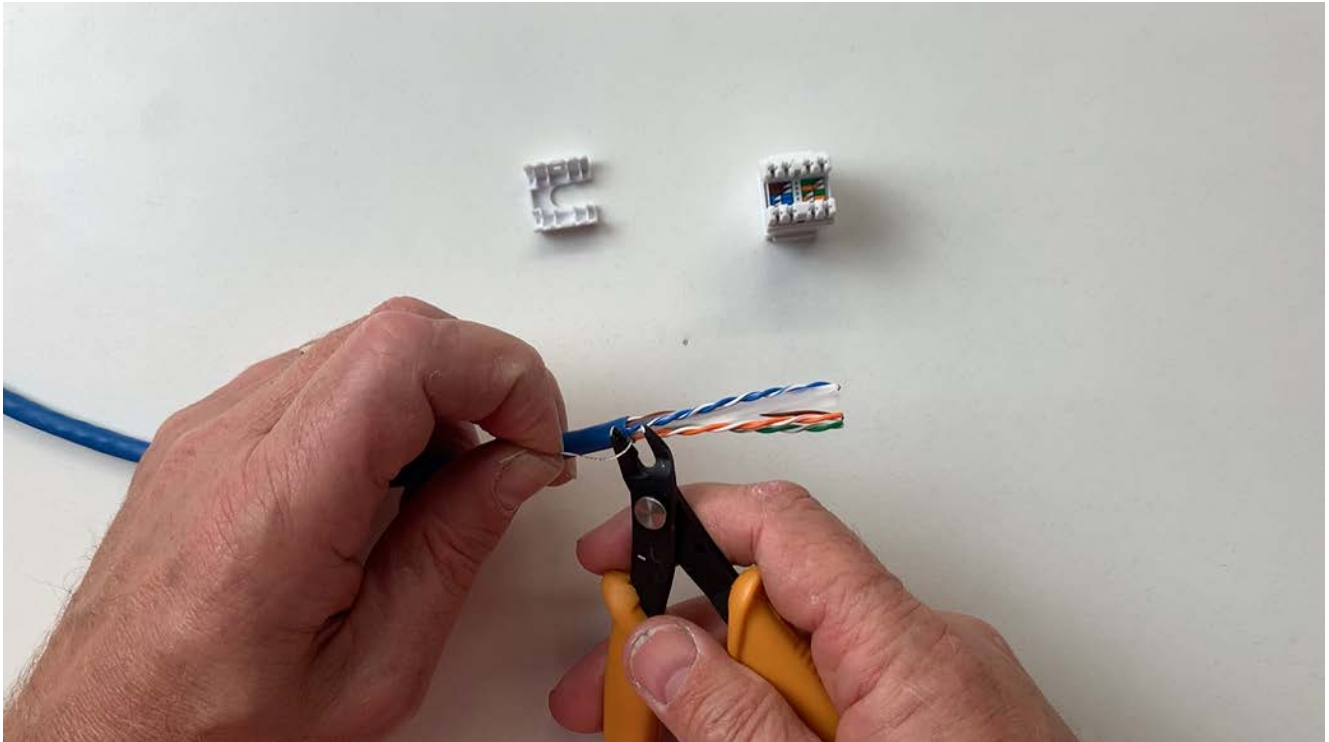
STAGE 2.

Remove the outer sheath.

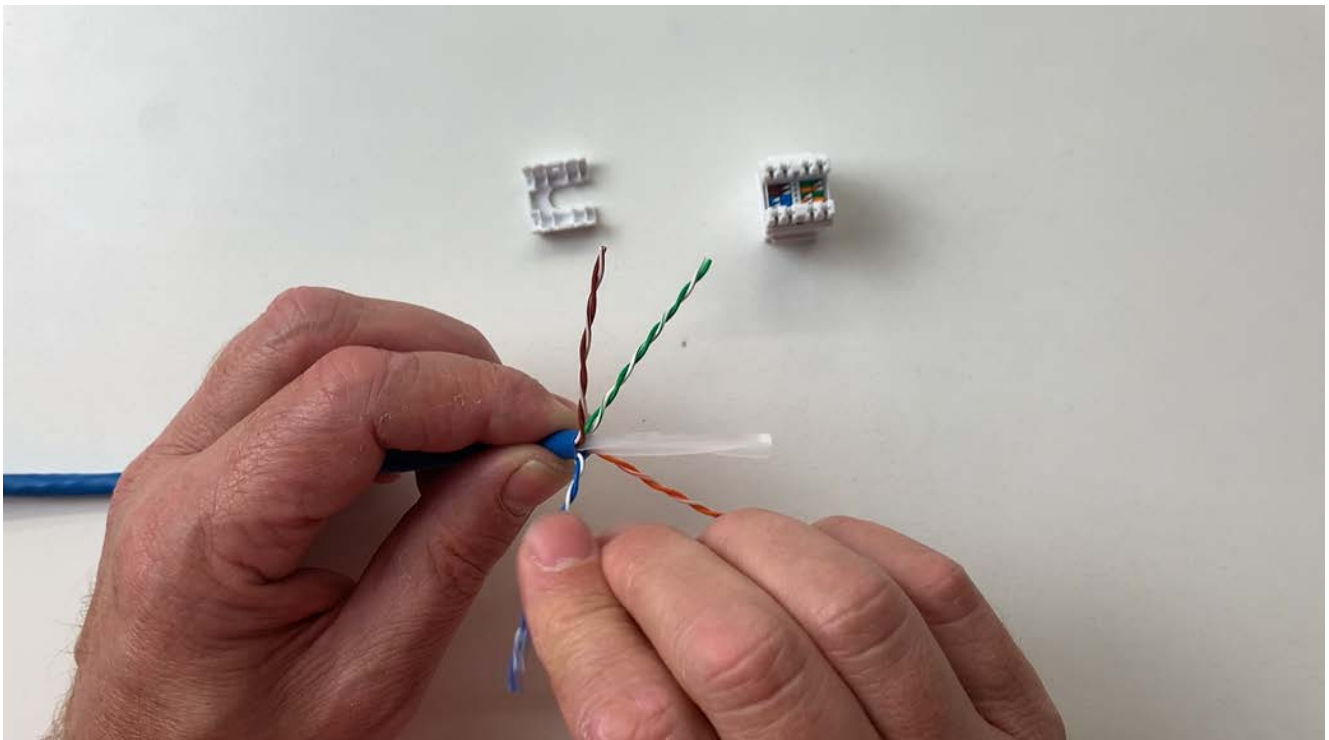


STAGE 3.

Using flush cutters remove the rip cord.

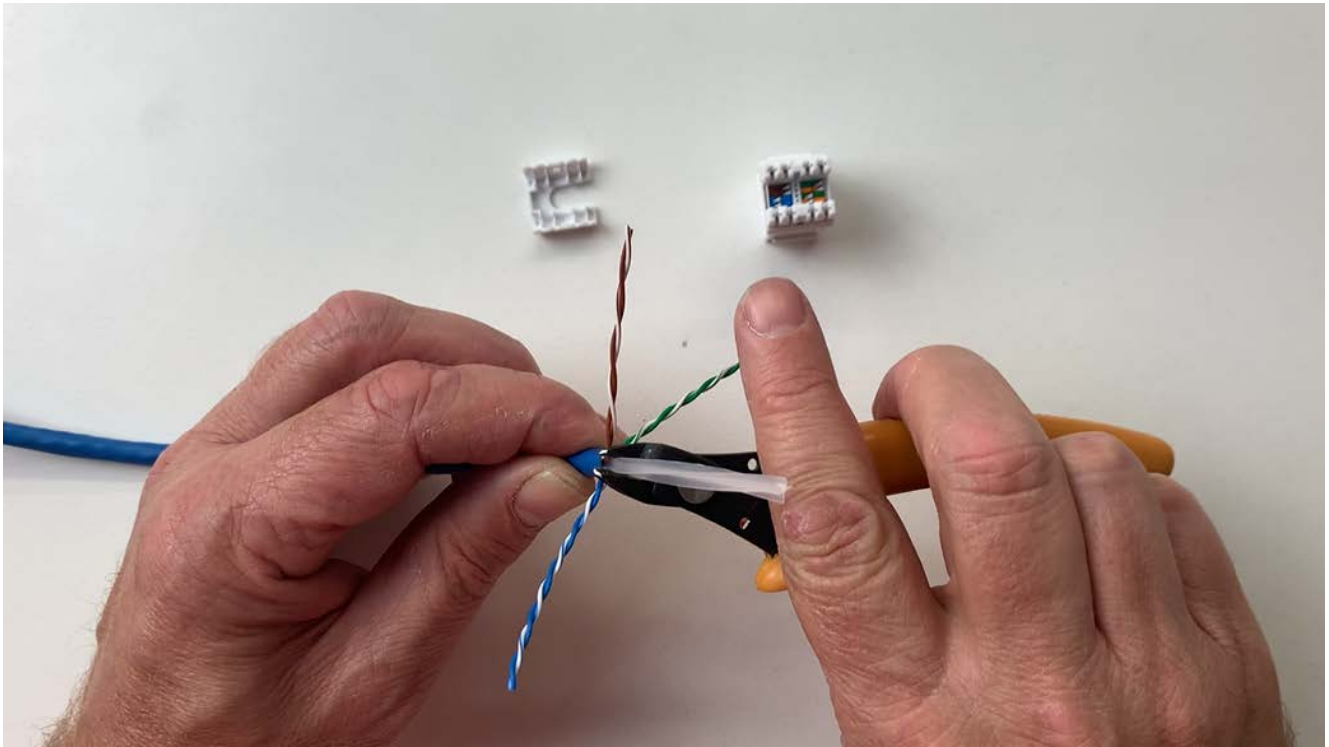
**STAGE 4.**

Separate the conductor pairs from the central spine.

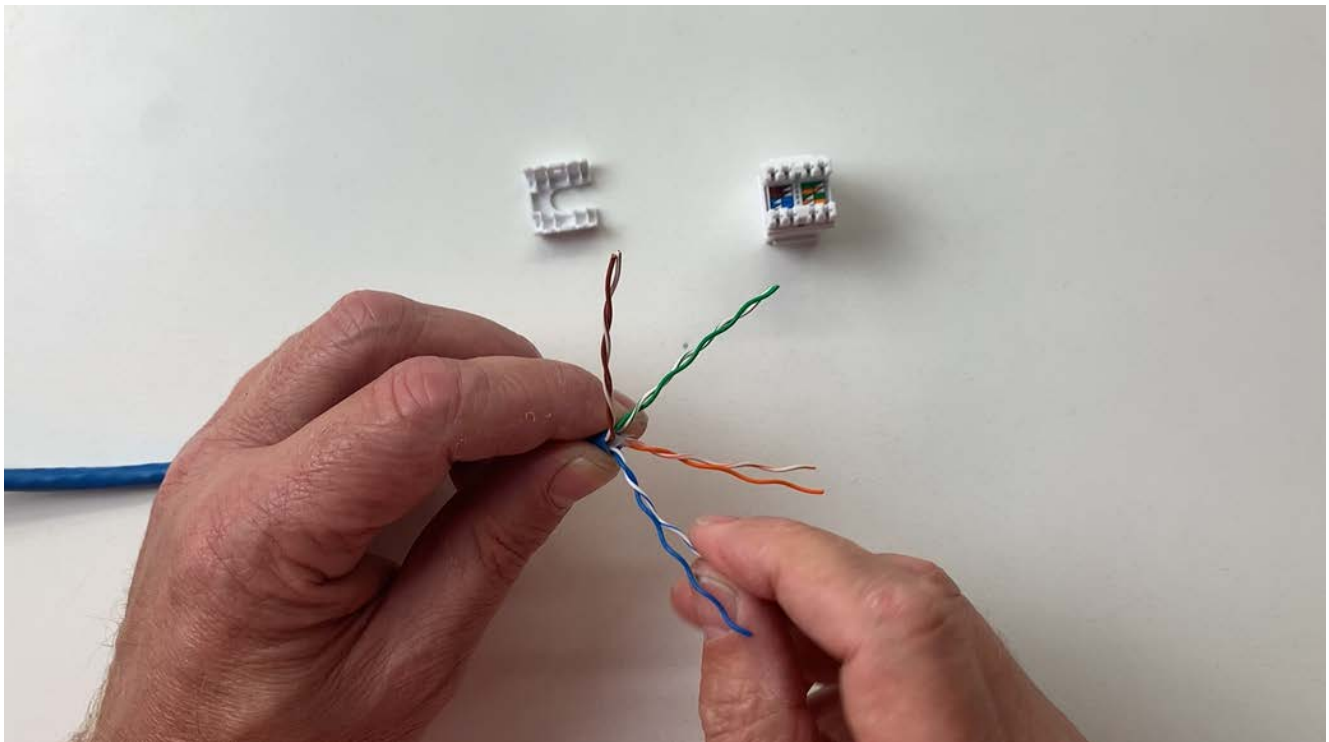


STAGE 5.

Using flush cutters cut away the central spine.

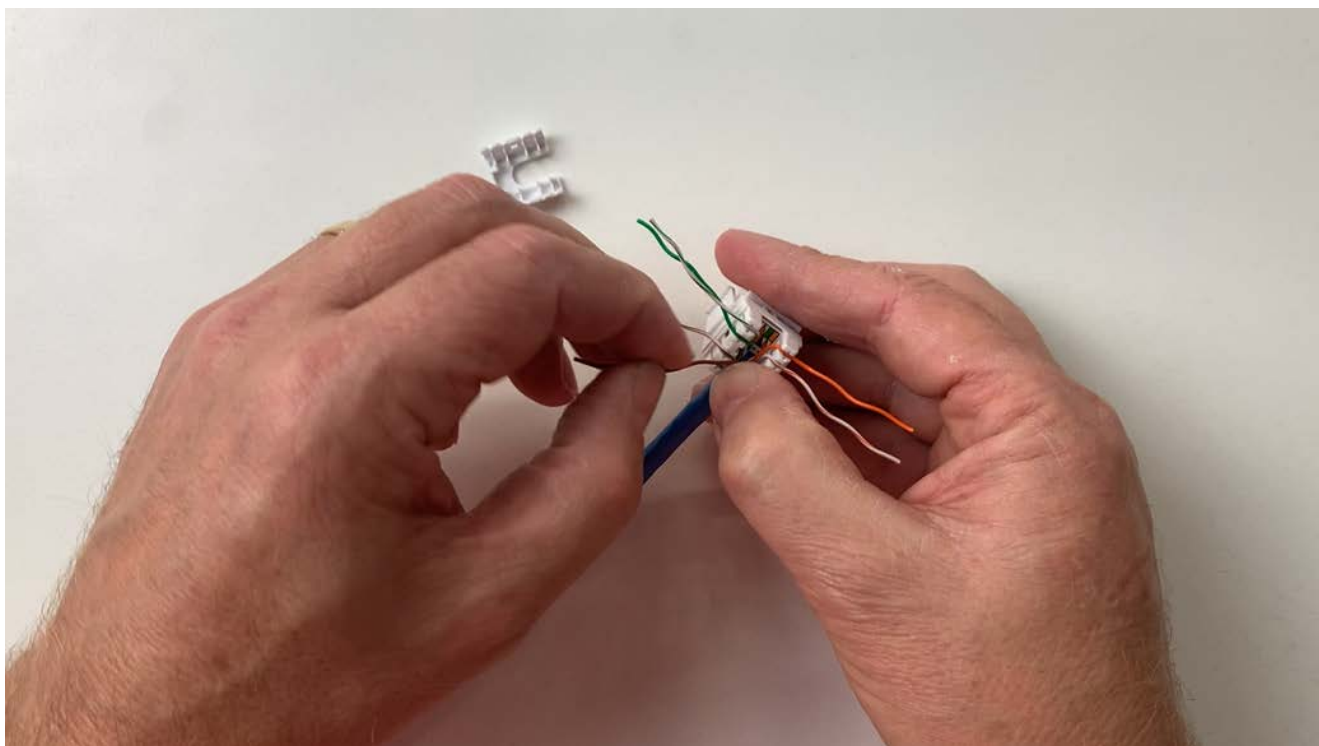
**STAGE 6.**

Arrange the 4 pairs based on the required locations on the jack module and untwist the pairs.

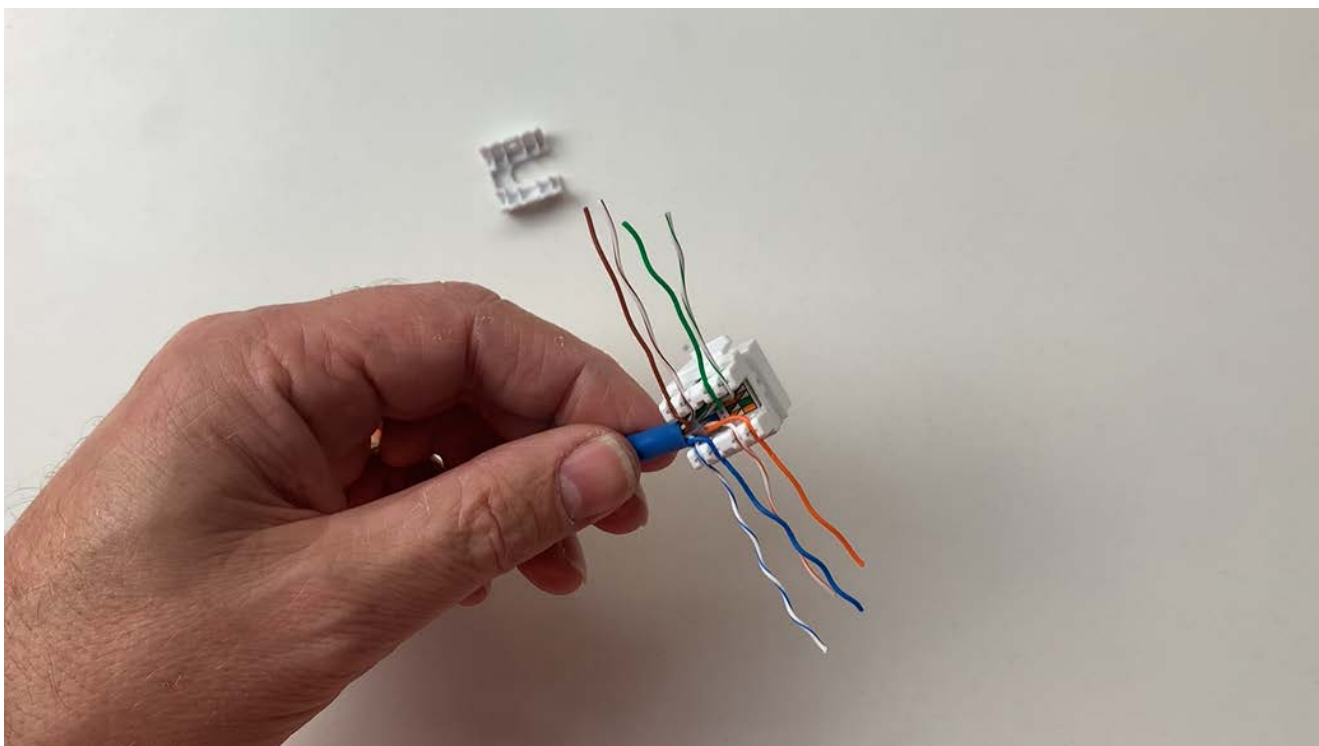


STAGE 7.

Lay the conductors into the terminals of the jack module.

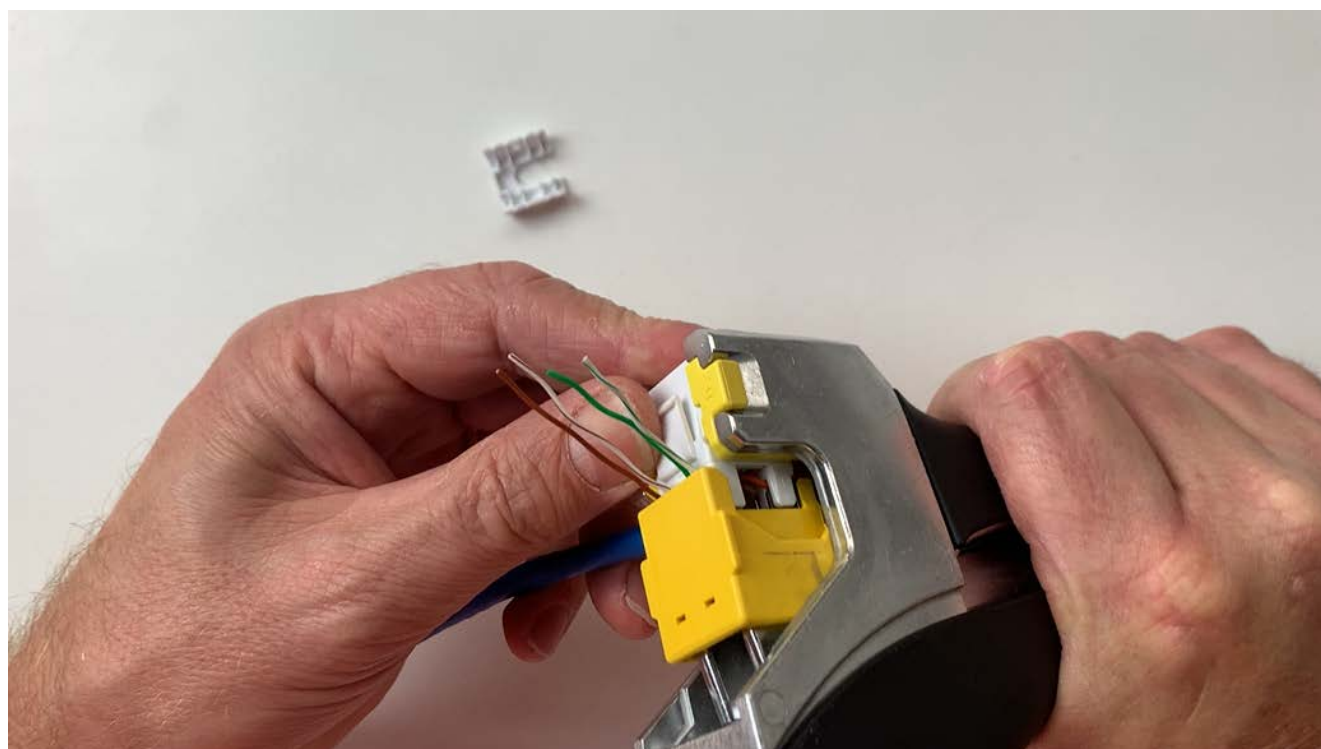
**STAGE 8.**

Ensure to retain the pair twist all the way to the terminals of the jack module and ensure all conductors are firmly secured in their required locations.



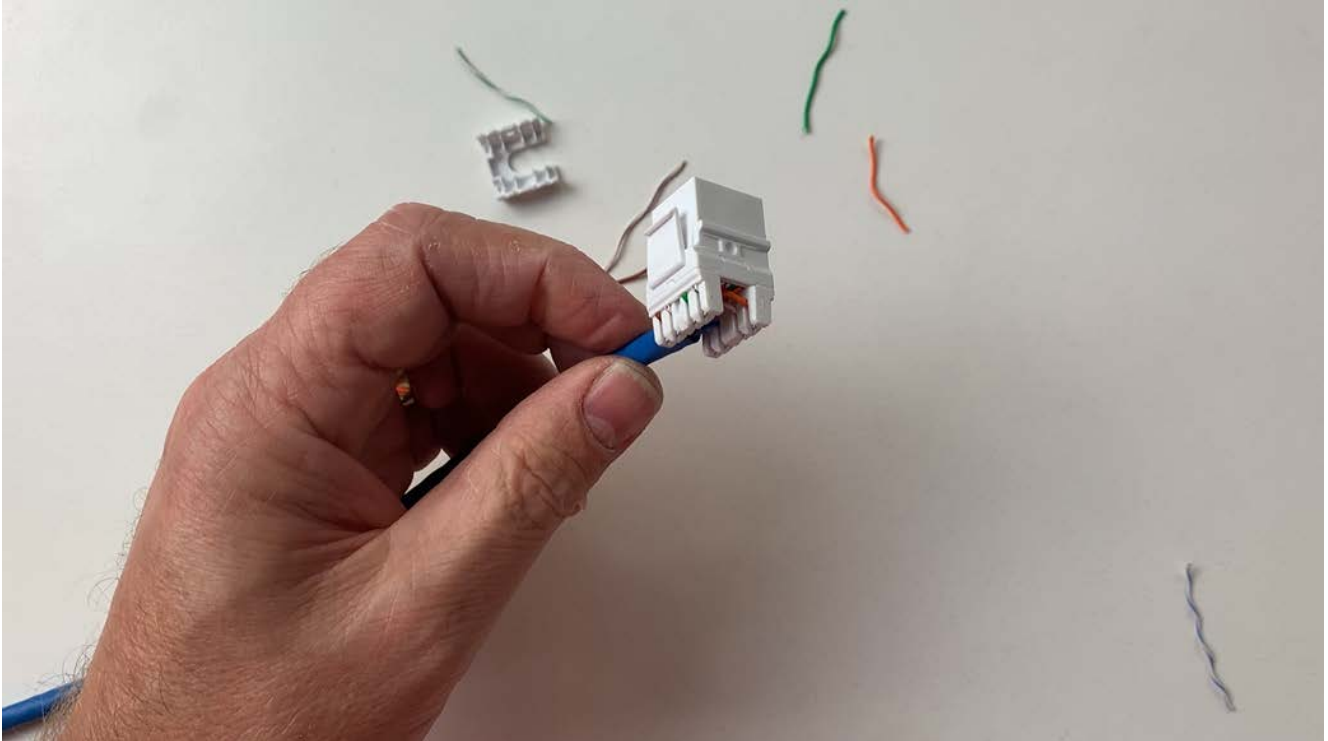
STAGE 9. SERVEREDGE QUICK TOOL REQUIRED. Part Number: QTKS

Insert the jack module into the allotted guides of the Serveredge Quick Tool and crimp. The Quick Tool will compress the conductors into the jack module and cut away the conductor excess.

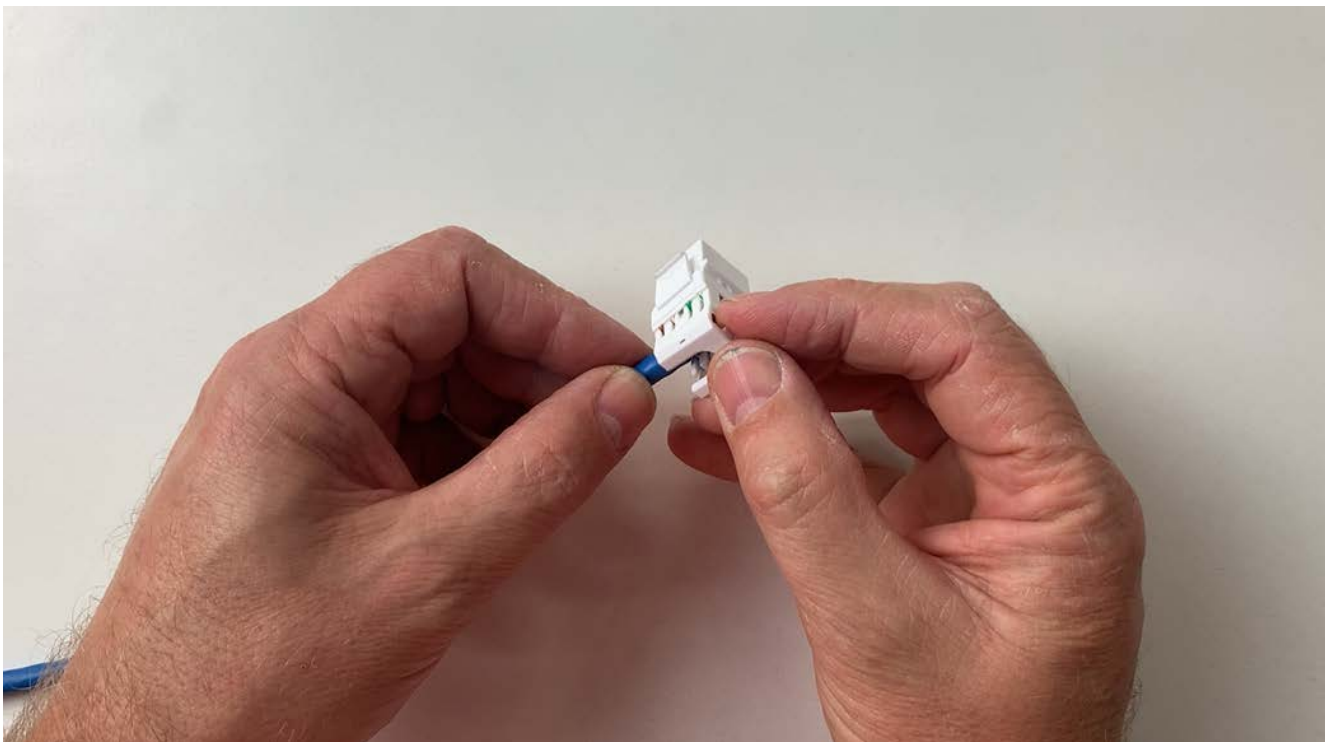


STAGE 10.

Crimping and Cutting complete.

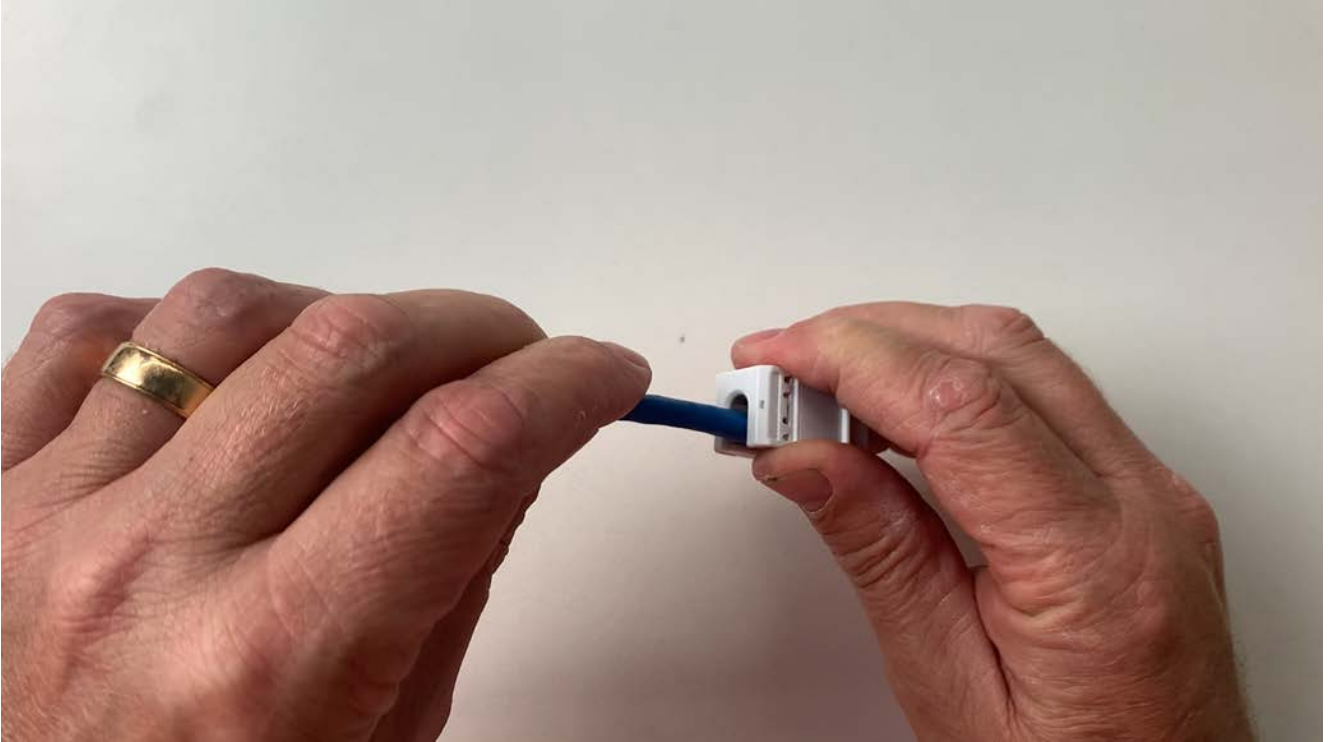
**STAGE 11.**

Place the rear cap onto the jack and press to ensure its fully seated.



STAGE 12.

Depending on preferred cable entry orientation (side entry or rear entry) bend cable as required.

**STAGE 13. Termination Complete - TEST AND VISUALLY CHECK TERMINATION**