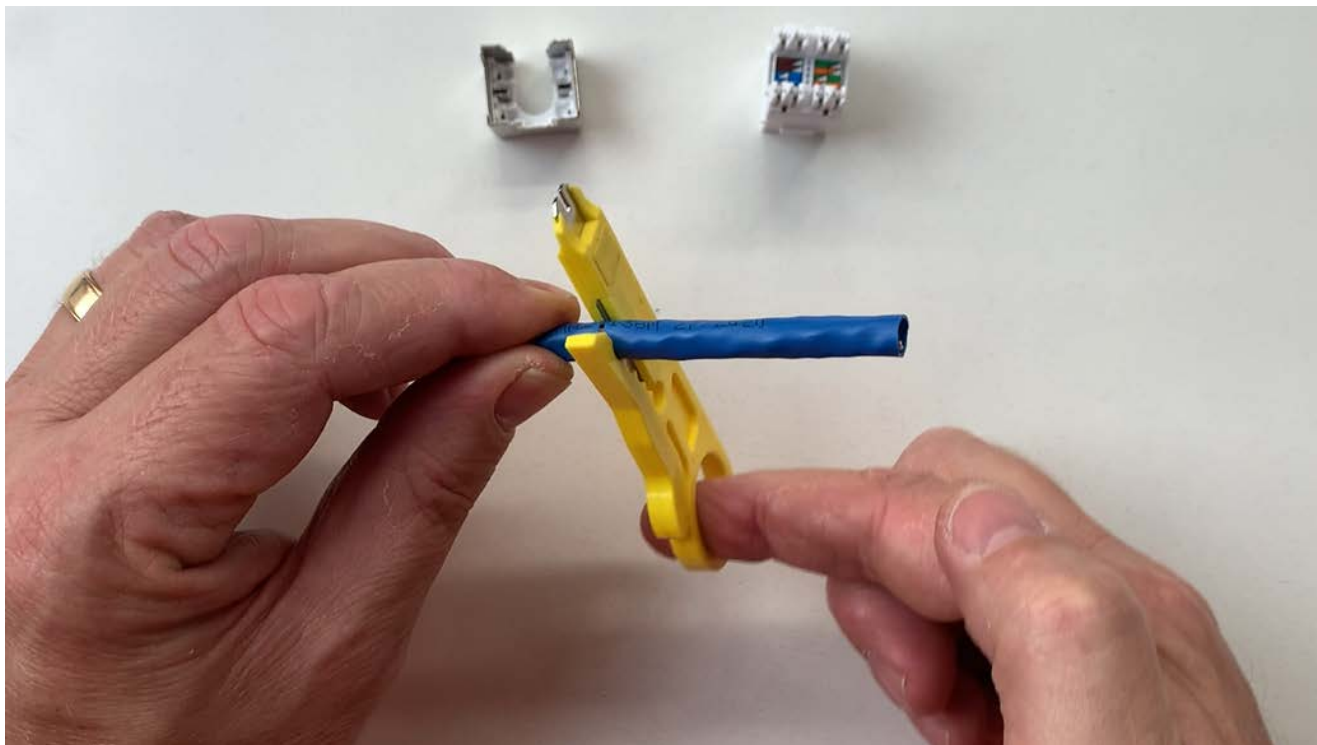


# SERVEREDGE KSUC6AQ-10WH KEYSTONE JACK TERMINATION INSTRUCTIONAL

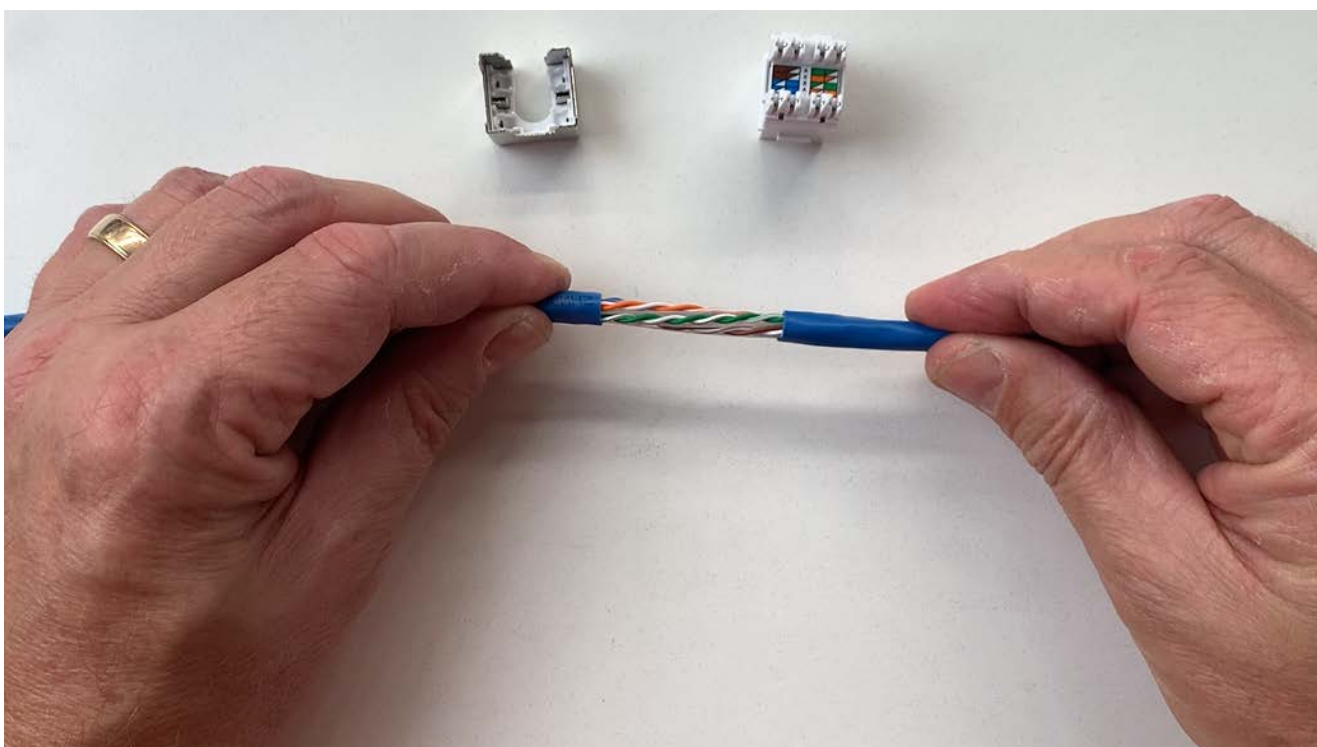
## STAGE 1.

Using cable strippers, strip back approx 50mm of the outer sheath.



## STAGE 2.

Remove the outer sheath.

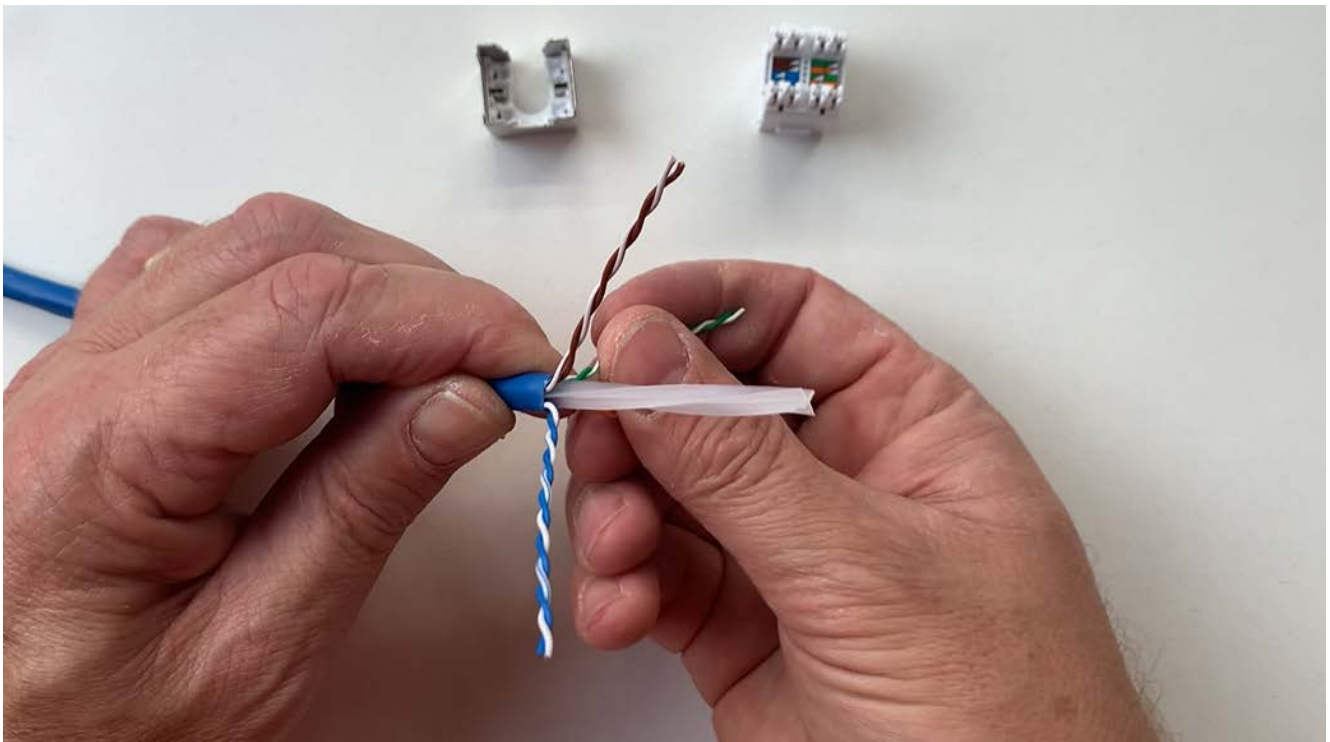


**STAGE 3.**

Using flush cutters remove the rip cord.

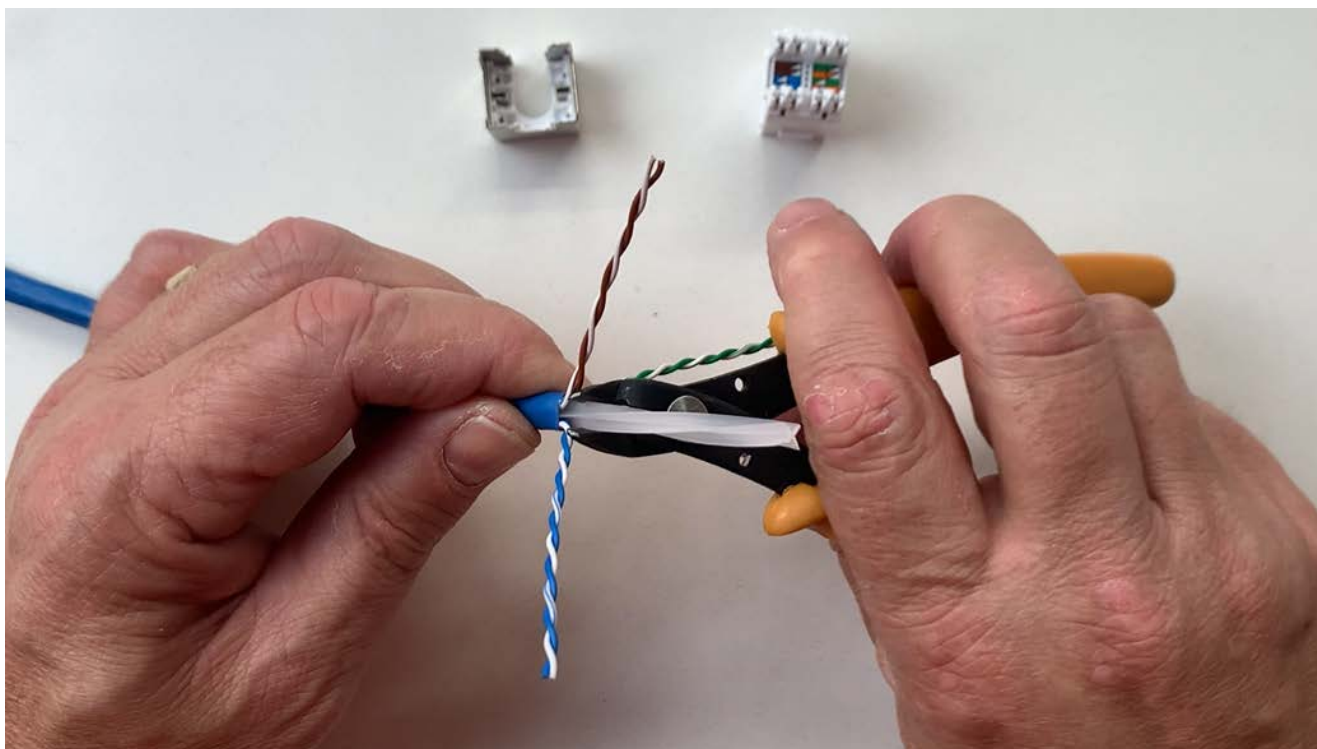
**STAGE 4.**

Separate the conductor pairs from the central spine.

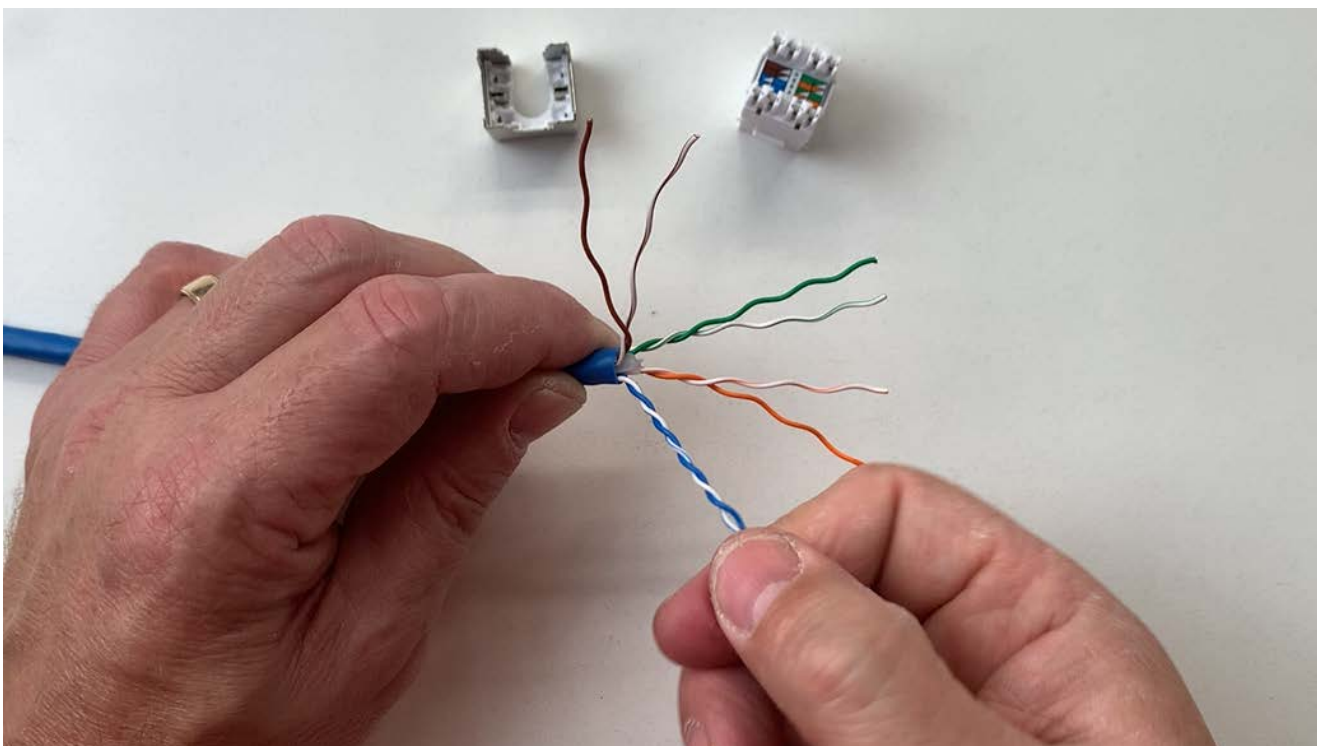


**STAGE 5.**

Using flush cutters cut away the central spine.

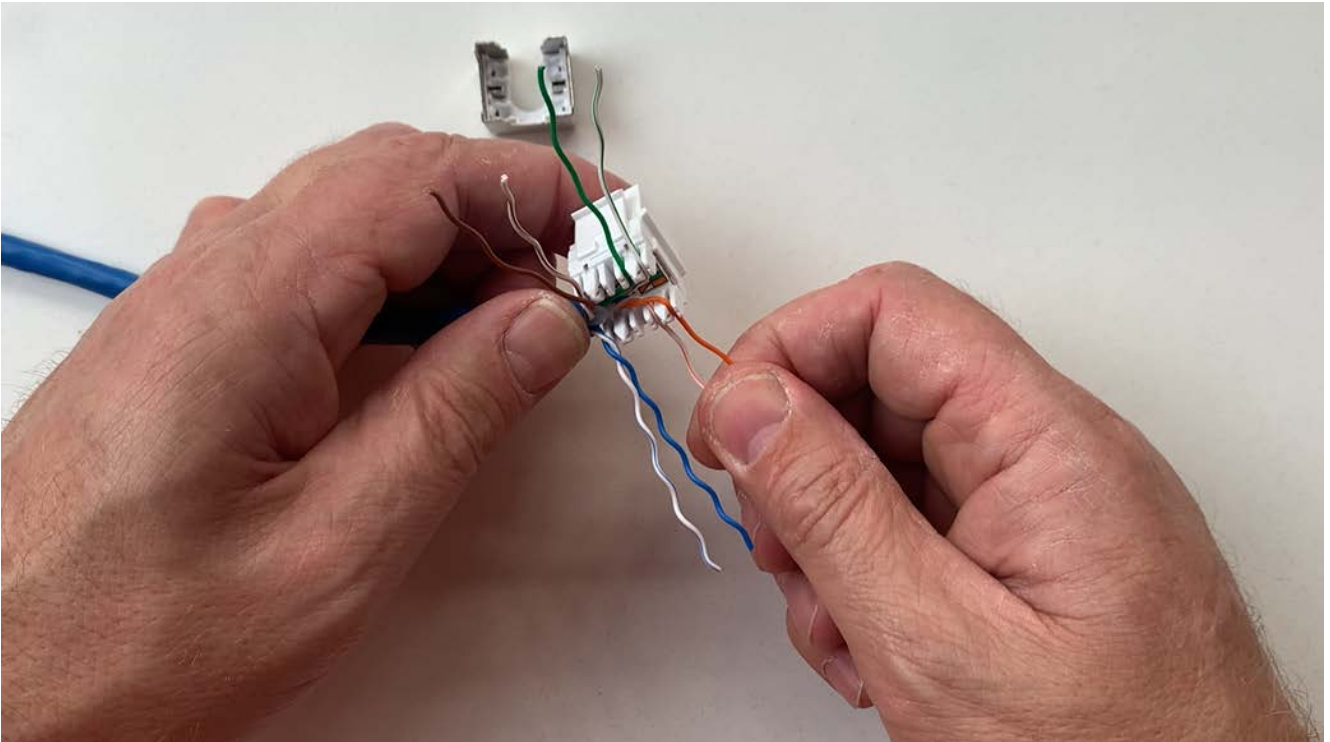
**STAGE 6.**

Untwist the conductor pairs.

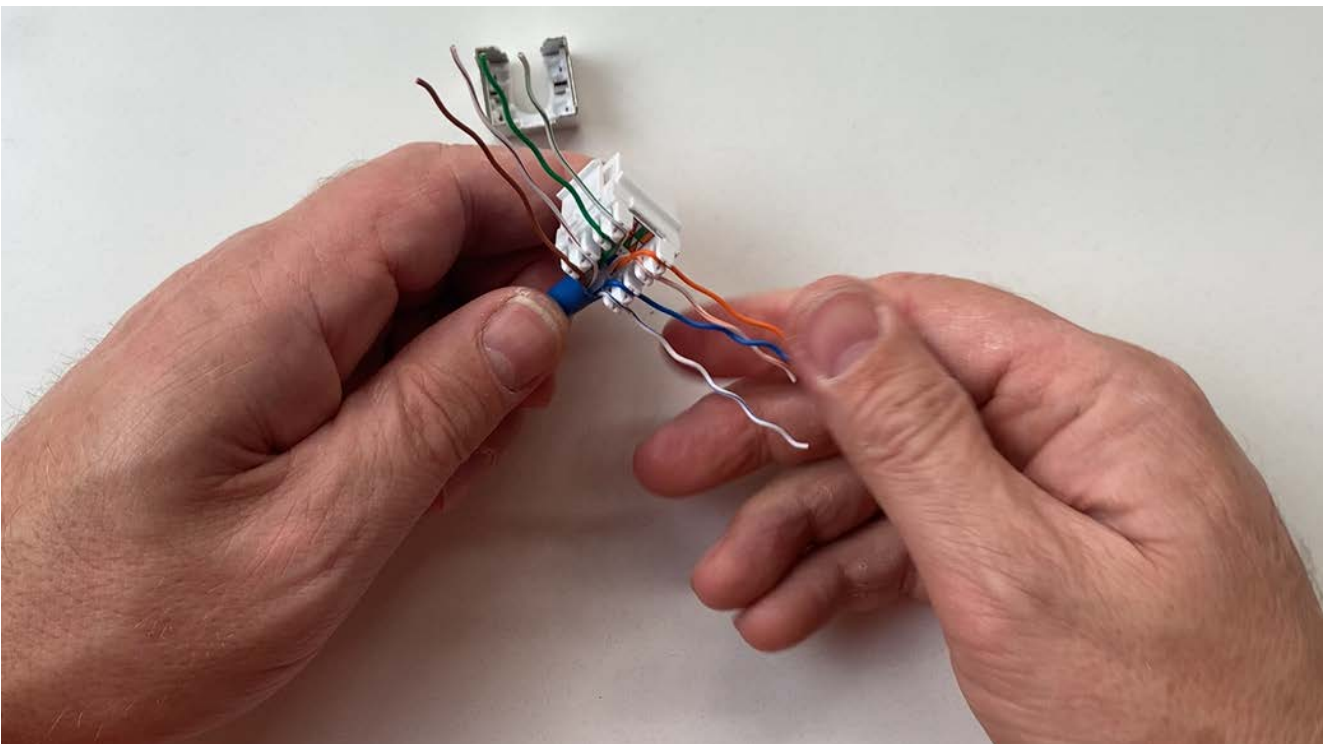


**STAGE 7.**

Lay the conductors into the terminals of the jack module.

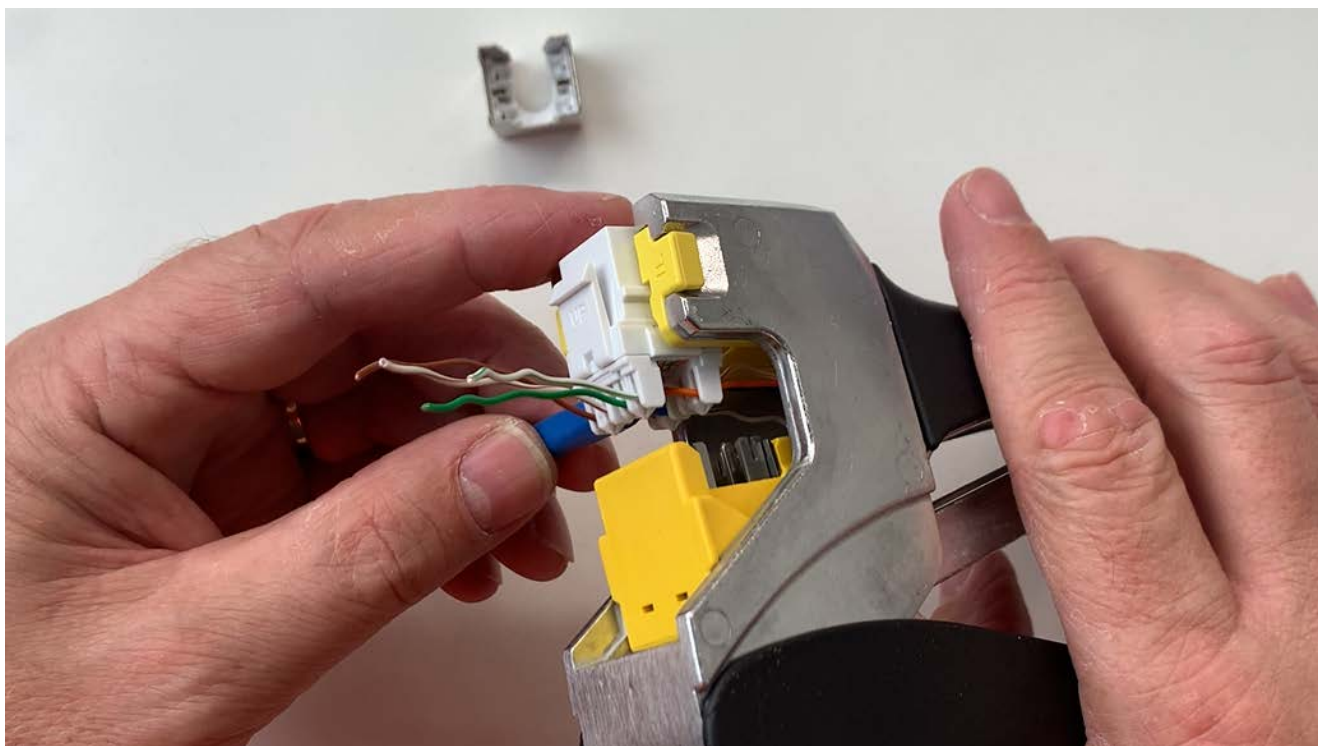
**STAGE 8.**

Ensure to retain the pair twist all the way to the terminals of the jack module.



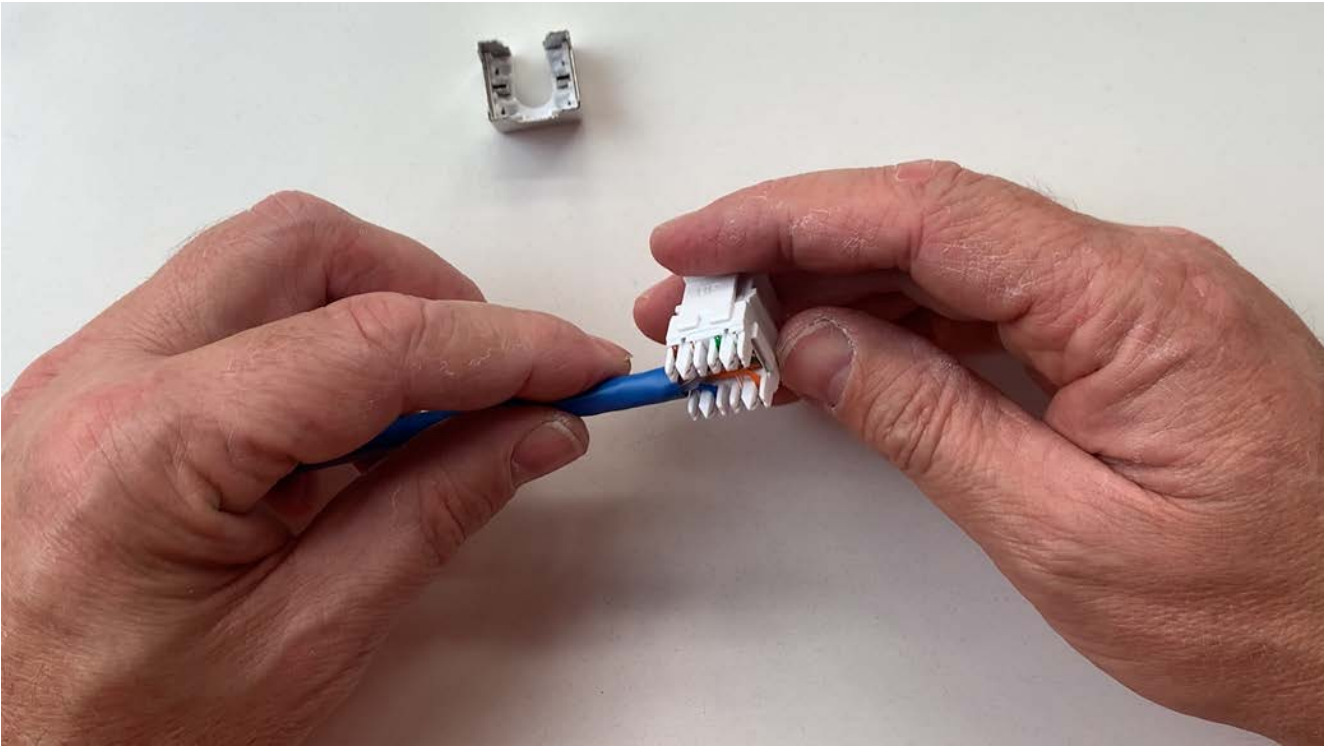
**STAGE 9. SERVEREDGE QUICK TOOL REQUIRED Part Number: QTKS**

Insert the jack module into the allotted guides of the Serveredge Quick Tool and crimp. The Quick Tool will compress the conductors into the jack module and cut away the conductor excess.

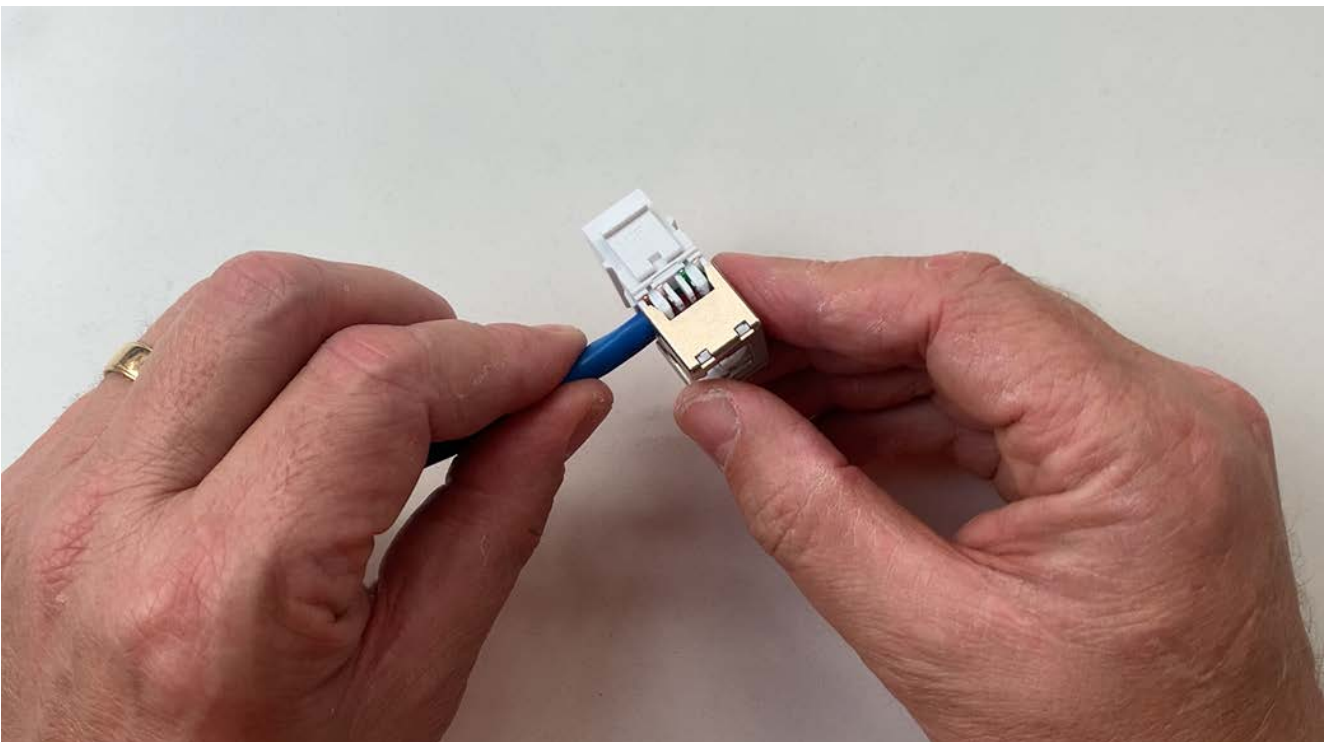


**STAGE 10.**

Ensure all conductors are fully seated in the jack module.

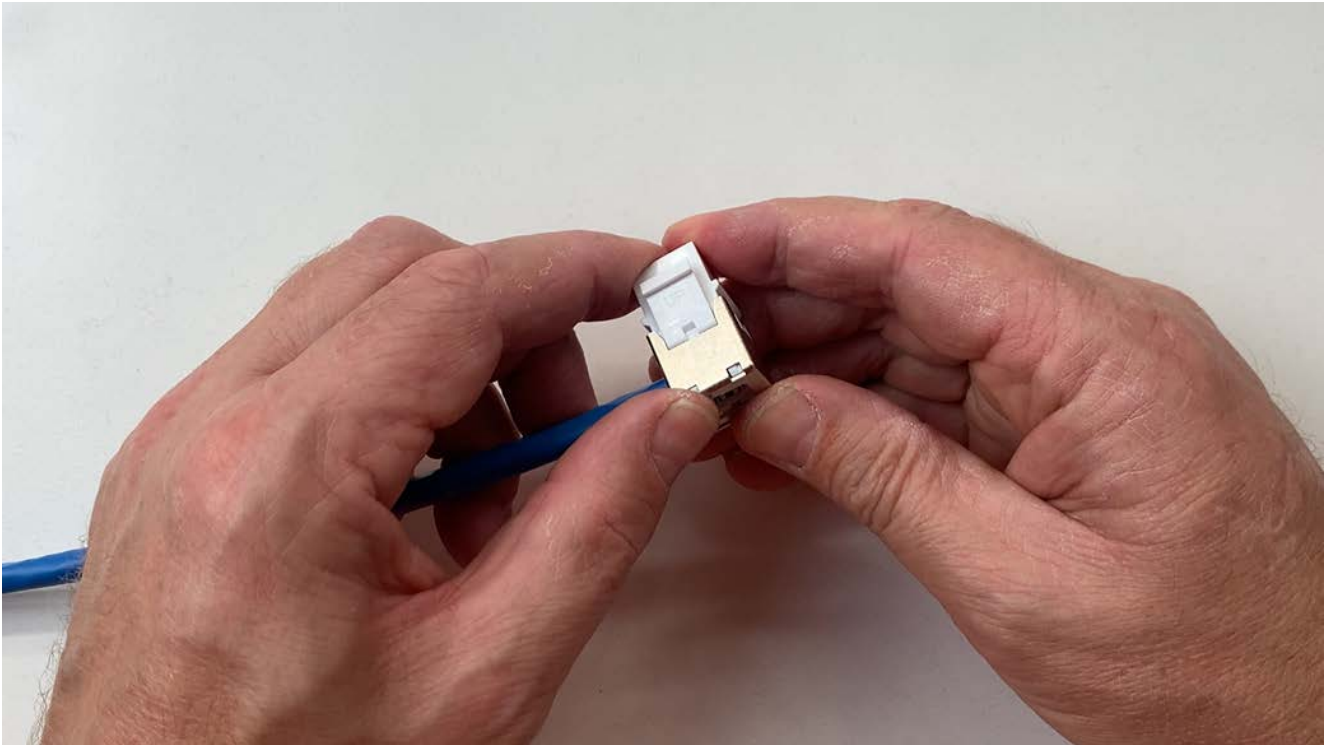
**STAGE 11.**

Place the rear cap on the back of the jack module.

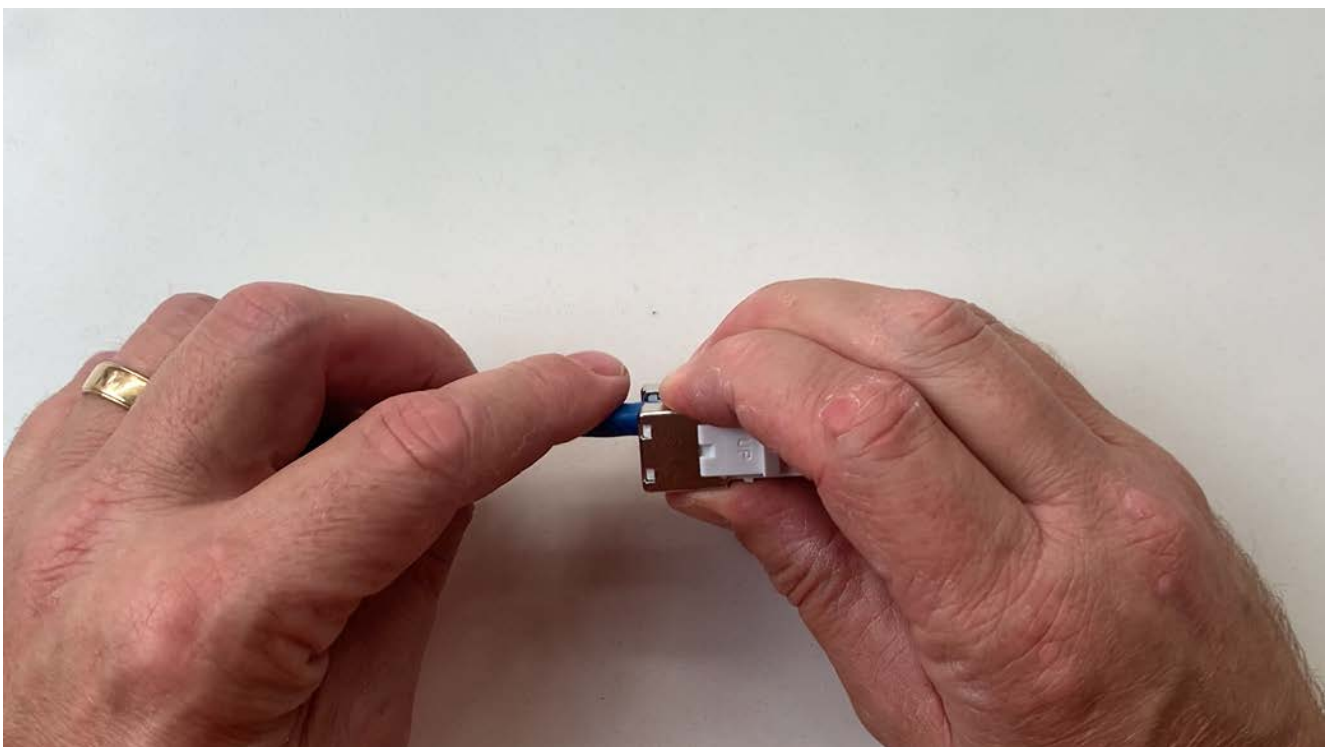


**STAGE 12.**

Press the rear cap onto the jack module until fully seated.

**STAGE 13.**

Depending on preferred cable orientation bend the cable to the rear of the jack.



**STAGE 14. Termination Complete - TEST AND VISUALLY CHECK TERMINATION**

