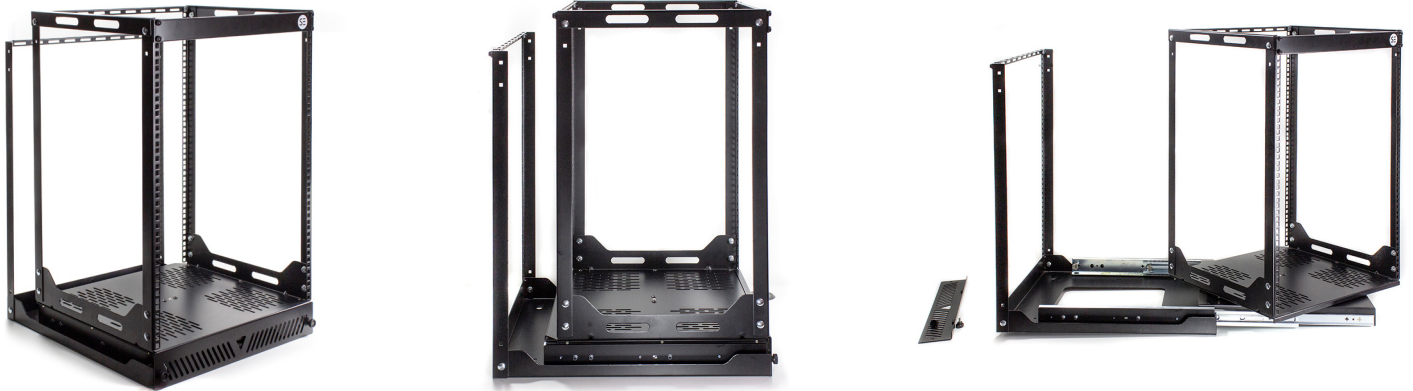


15RU SLIDE & SWIVEL RACK

PART NUMBER: **CBN-15RU-SSR**



PRODUCT DESCRIPTION

The Serveredge 19 Inch Slide Out Rack allows for easy access to equipment inside closed spaces such as cabinets and flush in-wall installations.

The rack features a sliding rack frame on top of the base designed to be securely bolted or screwed to a flat solid surface. The top unit slides out and locks in an extended position. It can be rotated left and right up to a 90 degree angle and locked at 0° and 90° for easy installation.

The rack comes with cable management lacing bars pre-installed to the rear, eliminating cable tension and providing an easy and clean installation.

PRODUCT FEATURES

- Features a sliding and swiveling rack frame on top of a fixed base
- Locks in the extended position for simplified equipment integration
- Rear cable management lacing bars for effective cable management
- Turntable rotates up to 180° with 90° left and 90° right rotation.
- Rotating top frame locking mechanism can be locked at 0° and 90° for easy installation and servicing
- Pre-drilled holes in base to secure the rack directly to the floor
- Easy to assemble
- Supports a static loading capacity of 56.5kg
- Warranty: 25 Years* See T&Cs

PRODUCT SPECIFICATION

Rack Height	15RU
Colour	Black
Weight Capacity - Stationary (kg)	56.5
Unit Dimensions (mm)	751(H) × 570(D) × 491(W)
Shipping Dimensions (mm)	220(H) × 610(D) × 725(W)
Unit Weight (kg)	22.72
Gross Weight (kg)	25.76

PRODUCT INCLUDES

Slide & Swivel Server Rack	× 1
Cable Support Bars	× 4

GUARANTEE/WARRANTY

Serveredge products are manufactured at the highest standards using highest quality materials at an affordable price. This Serveredge product comes with 25 Years Warranty for that extra peace of mind. Subject to Serveredge Terms and Conditions*