

Toyota SRS 2020+ with RH850

I. Overview

Supported SRS types

Current Barracuda software version (26) supports, **Toyota SRS with locked RH850 MCUs** (R7F7016443 and R7F7016843). Such SRS are found in vehicles from 2020 to date. Functions **don't** require direct access to the SRS, connection is done through the vehicle's **Gateway**.

Available operations are:

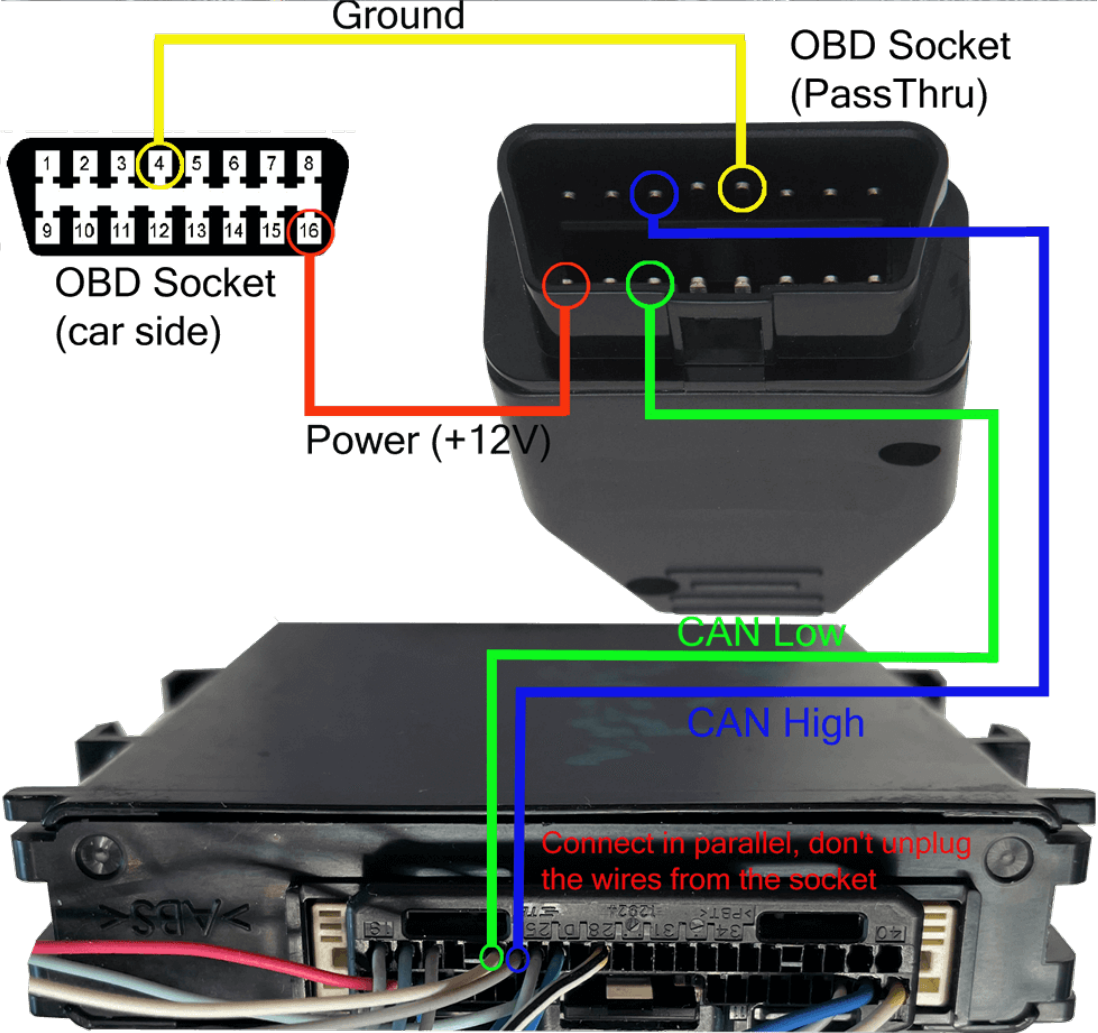
- Read DTC
- Clear DTC
- Clear crash data
- Read DataFlash
- Write DataFlash

Requirements

- Barracuda programmer
- J2534 compliant PassThru OBD Adapter (ex.: Tactrix OpenPort 2.0)
- Active Barracuda annual subscription

II. Connection Diagram

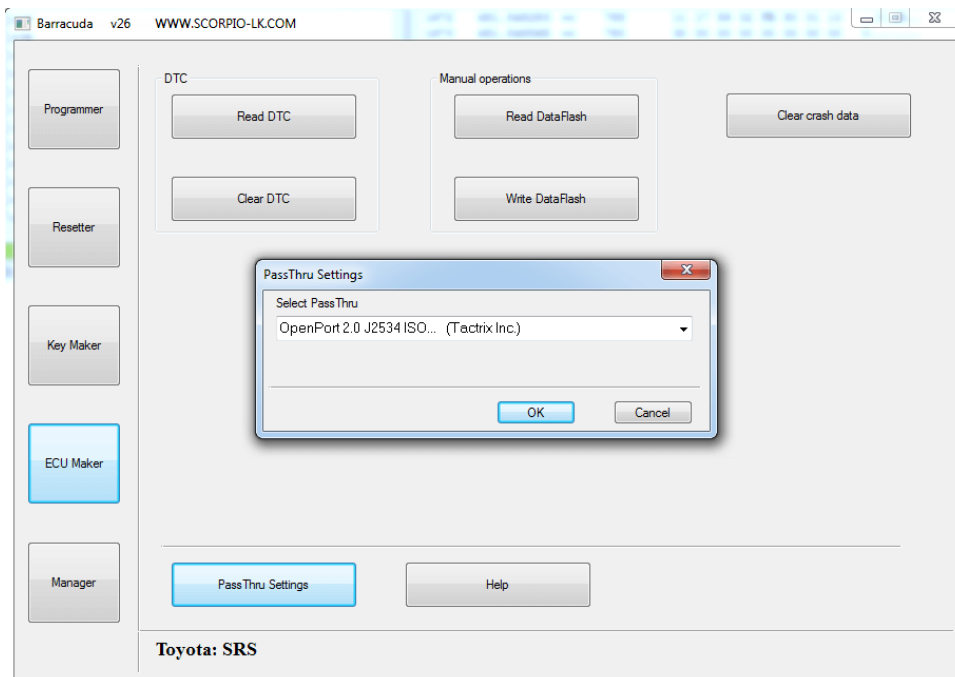
All procedures (Read DTC, Clear DTC, Clear crash data, Read DataFlash & Write DataFlash) **don't** require direct access to the SRS, connection is established through the vehicle's **Gateway** as shown below:



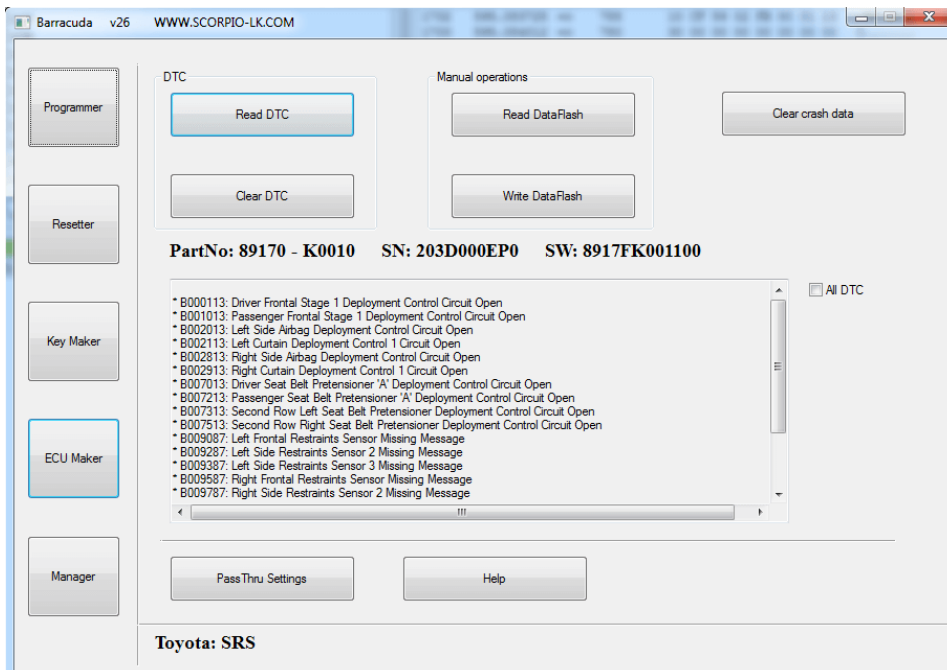
III. Clear SRS Crash data & DTC errors

Standard Procedure

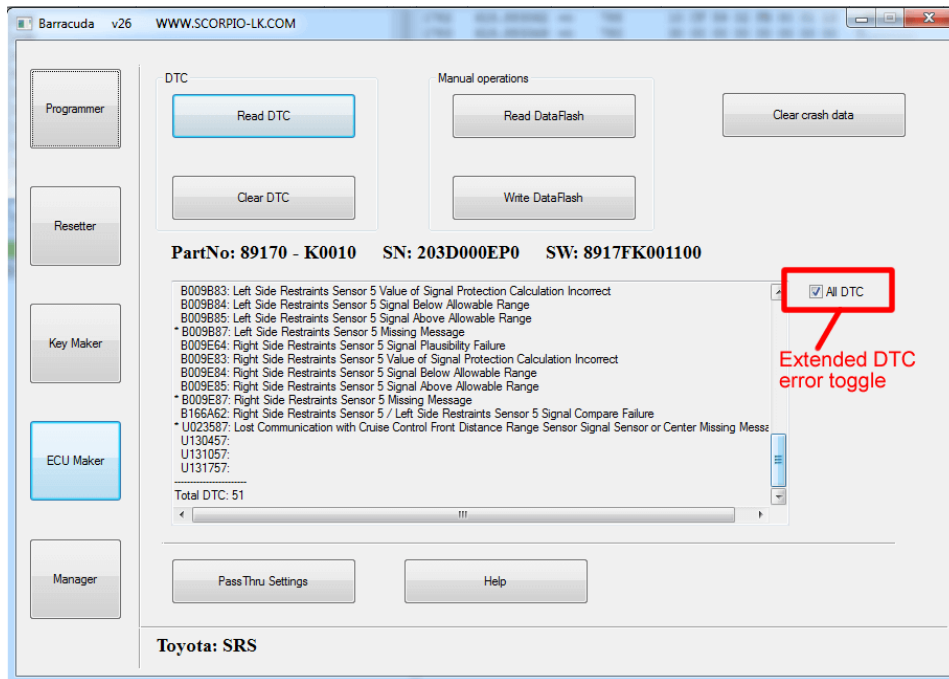
1. Connect the **J2534 Pass Thru** adapter to a PC and wire it as shown in section II. Connection Diagram
2. Connect Barracuda to the PC and run its software (Barracuda.exe)
3. Select function: ECU-> Toyota-> SRS
4. In **PassThru Settings** select the option for the adapter you are using.



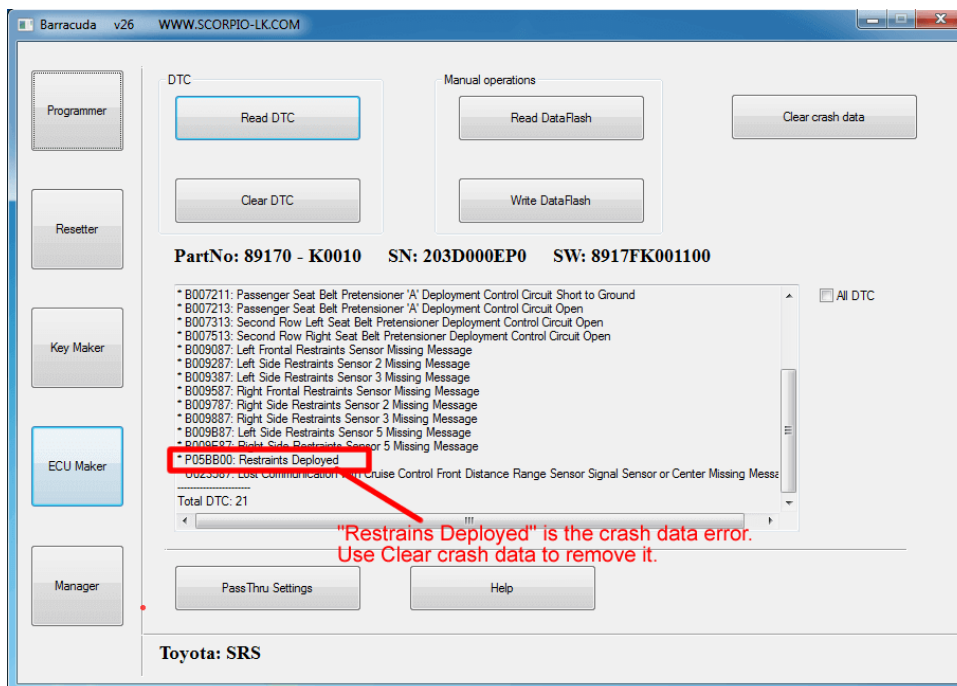
5. Press Read DTC - this will display the errors log, including status of crash data. You have a choice between SRS log and extended log. Default option is SRS log.



The extended log will also show DTC errors which don't pertain directly to the SRS, but can help you diagnose other possible issues with the vehicle. The option is toggled by the checkbox **All DTC**



6. In the error log a row with error code "**Restraints Deployed**", means that currently the SRS has stored crash data. Use the button **Clear crash data**, to remove it.



7. After that you can clear the rest of the errors with **Clear DTC**.

IV. Manual Operations

The software supports the following manual operations:

- **Read DataFlash**
- **Write DataFlash**

They allow to read, save and write (other or modified dump file) the entirety of the SRS RH850 MCU Data Flash area. Connection is same as shown in section II. Connection Diagram.