

# WOUD FABRIC AND LEATHER SELECTION



# WOUD UPHOLSTERY SELECTION

Get an overview of our defined fabric and leather options. The upholstery programme for Collar, Flora, Nakki and Meadow consists of different fabric and leather price groups. Covering more than 750 textile and leather (Nakki and Meadow only) alternatives from high-quality textile manufacturer brands,

Custom upholstery orders are ready to ship with standard delivery lead time of 8-10 weeks. It is possible to use customer's own materials (COM) with extended delivery lead times upon fabric approval. COM-prices are based on price group 1A.

Fire retardent foam is available upon request and standard for all Great Britain orders.

Please note that the presented colour references are only intended as a guide. For further information and care instructions, please see manufacturer websites:  
[kvadrat.dk](http://kvadrat.dk)  
[gabriel.dk](http://gabriel.dk)  
[sorensenleather.com](http://sorensenleather.com)

Explore our upholstered furniture at [wouddesign.com/fabric-collection/](http://wouddesign.com/fabric-collection/)

## TEXTILE PRICE GROUP 1A

Textafoam Alpine \*

## TEXTILE PRICE GROUP 1B

Reflect, Kvadrat  
Cura, Gabriel  
Cyber, Gabriel  
Step Melange, Gabriel

## TEXTILE PRICE GROUP 2A

Remix 3, Kvadrat  
Re-wool, Kvadrat  
Gaja C2C, Gabriel

## TEXTILE PRICE GROUP 2B

Ara, Kvadrat  
Barnum, Nevotex  
Clay, Kvadrat  
Ecriture, Kvadrat  
Fiord 2, Kvadrat  
Hallingdal 65, Kvadrat  
Steelcut trio 3, Kvadrat  
Vidar 4, Kvadrat

## TEXTILE PRICE GROUP 3A

Harald 3, Kvadrat  
Nara, Kvadrat  
Sisu, Kvadrat

## LEATHER PRICE GROUP 1

Sørensen Leather Nuance  
Sørensen Leather Envy

## LEATHER PRICE GROUP 2

Sørensen Leather Savanne  
Sørensen Leather Spectrum  
Sørensen Leather Duet  
Sørensen Leather Dunes

## LEATHER PRICE GROUP 3

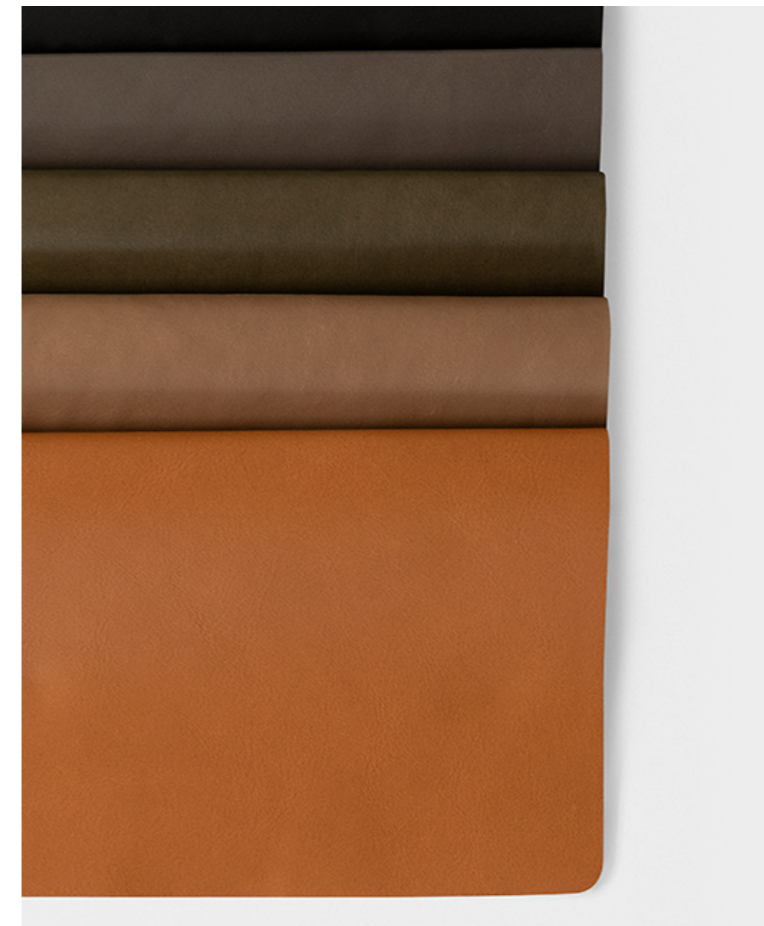
Sørensen Leather Royal nubuck



TEXTILE/LEATHER	COLLAR	FLORA	MEADOW	NAKKI
<b>TEXTILE PRICE GROUP 1A</b>				
<i>Alpine, Textafoam</i>	●	●	●	●
<b>TEXTILE PRICE GROUP 1B</b>				
<i>Reflect, Kvadrat</i>	●	●	●	●
<i>Cura, Gabriel</i>	●	●	●	●
<i>Cyber, Gabriel</i>	●	●	●	●
<i>Step Melange, Gabriel</i>	●	●	●	●
<b>TEXTILE PRICE GROUP 2A</b>				
<i>Remix 3, Kvadrat</i>	●	●	●	●
<i>Re-wool, Kvadrat</i>	●	●	●	●
<i>Gaja C2C, Gabriel</i>	●	●	●	●
<b>TEXTILE PRICE GROUP 2B</b>				
<i>Ara, Kvadrat</i>	●	●	●	●
<i>Barnum, Nevotex</i>	●	●	●	●
<i>Clay, Kvadrat</i>	●	●	●	●
<i>Ecriture, Kvadrat</i>	●	●	●	●
<i>Fiord 2, Kvadrat</i>	●	●	●	●
<i>Hallingdal 65, Kvadrat</i>	●	●	●	●
<i>Steelcut trio 3, Kvadrat</i>	●	●	●	●
<i>Vidar 4, Kvadrat</i>	●	●	●	●
<b>TEXTILE PRICE GROUP 3A</b>				
<i>Harald 3, Kvadrat</i>	●	●	●	●
<i>Nara, Kvadrat</i>	●	●	●	●
<i>Sisu, Kvadrat</i>	●	●	●	●
<b>LEATHER PRICE GROUP 1</b>				
<i>Nuance, Sørensens Leather</i>			●	●
<i>Envy, Sørensens Leather</i>			●	●
<b>LEATHER PRICE GROUP 2</b>				
<i>Savanne, Sørensens Leather</i>			●	●
<i>Spectrum, Sørensens Leather</i>			●	●
<i>Duet, Sørensens Leather</i>			●	●
<i>Dunes, Sørensens Leather</i>			●	●
<b>LEATHER PRICE GROUP 3</b>				
<i>Royal nubuck, Sørensens Leather</i>			●	●



**ENVY** ELEGANT ANILINE LEATHER



**TYPE**  
ANILINE LEATHER

**ORIGIN**  
EUROPEAN RAWHIDE

**SURFACE**  
NATURAL SURFACE WITH MARKINGS

**FINISH**  
WAX WITH A SILKY FEEL

**TANNAGE**  
CHROME

**DYE**  
WATER-BASED ANILINE DYE

**THICKNESS**  
1,0 - 1,2 MM

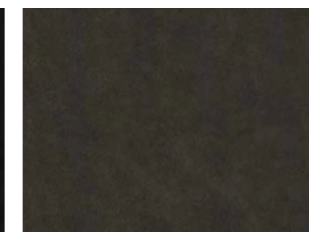
**CARE**  
ONLY VACUUM WITH A SOFT BRUSH  
PROTECT FROM DIRECTLY SUNLIGHT

1

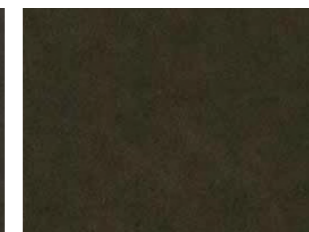
Leather price group



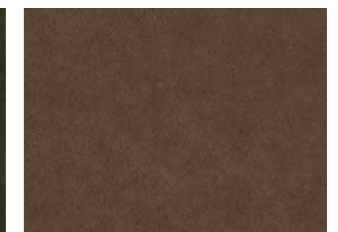
20321 - BLACK



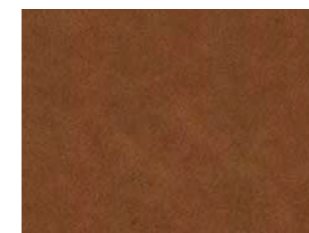
20323 - ANTHRAZITE



20324 - OLIVE



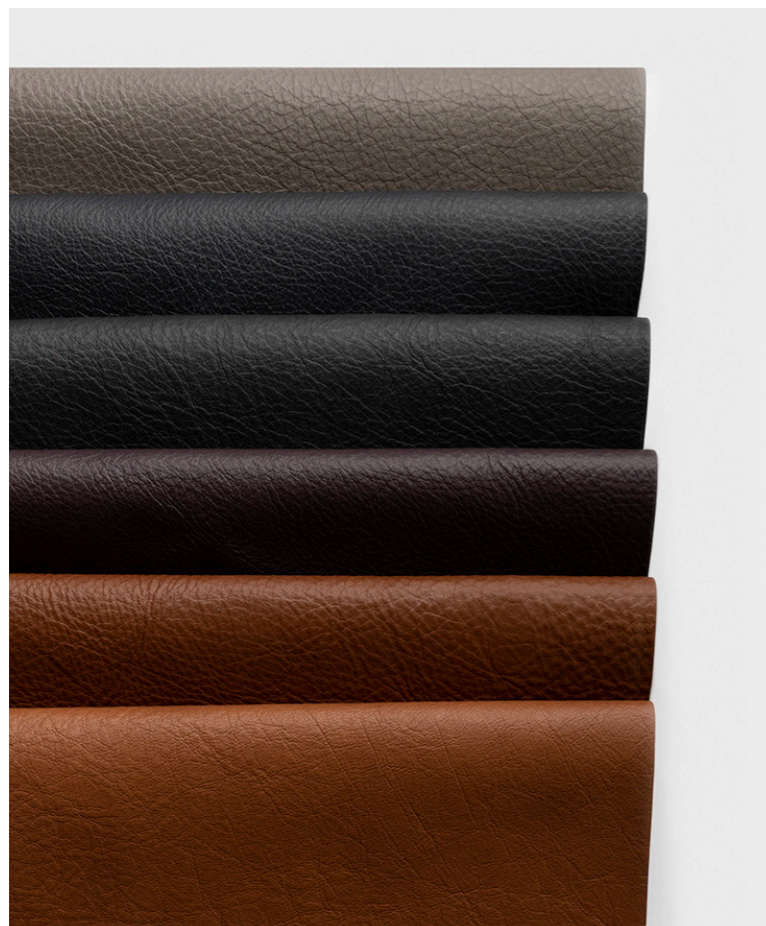
20322 - NOUGAT



20320 - COGNAC

# NUANCE

DURABLE PROTECTED LEATHER



**TYPE**  
PROTECTED LEATHER

**ORIGIN**  
NON-EU

**SURFACE**  
VISIBLE NATURAL MARKINGS AND TWO-TONED TEXTURE

**FINISH**  
SURFACE PROTECTION

**TANNAGE**  
CHROME

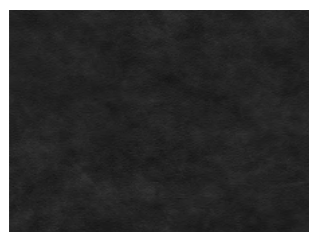
**DYE**  
WATER-BASED ANILINE DYE

**THICKNESS**  
1,2 - 1,4 MM

**SPECIFICATIONS**  
TVOC TESTED. WATER AND DIRT REPELLENT, STAIN RESISTANT

**CARE**  
ONLY VACUUM WITH A SOFT BRUSH  
PROTECT FROM DIRECTLY SUNLIGHT

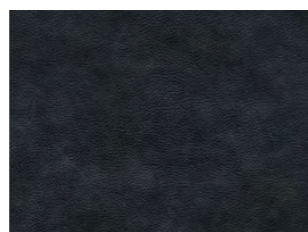
DEVELOPED IN COLLABORATION WITH  
SPACE COPENHAGEN



40780 - SHADOW GREY



40784 - EARTHY GREY



40781 - HEAVENLY GREY



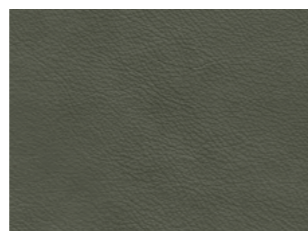
40785 - SMOKED GREY



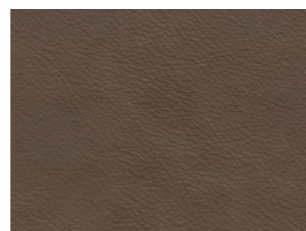
40783 - BURNED GREY



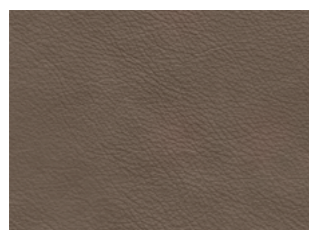
40782 - LIGHT GREY



40787 - DARK GREEN



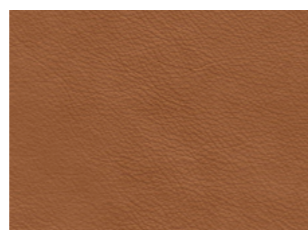
40791 - DARK BROWN



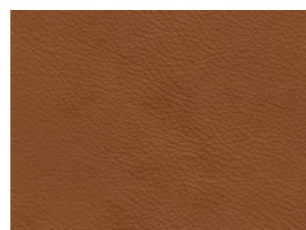
40788 - CINNAMON



40789 - BURGUNDY



40790 - WALNUT

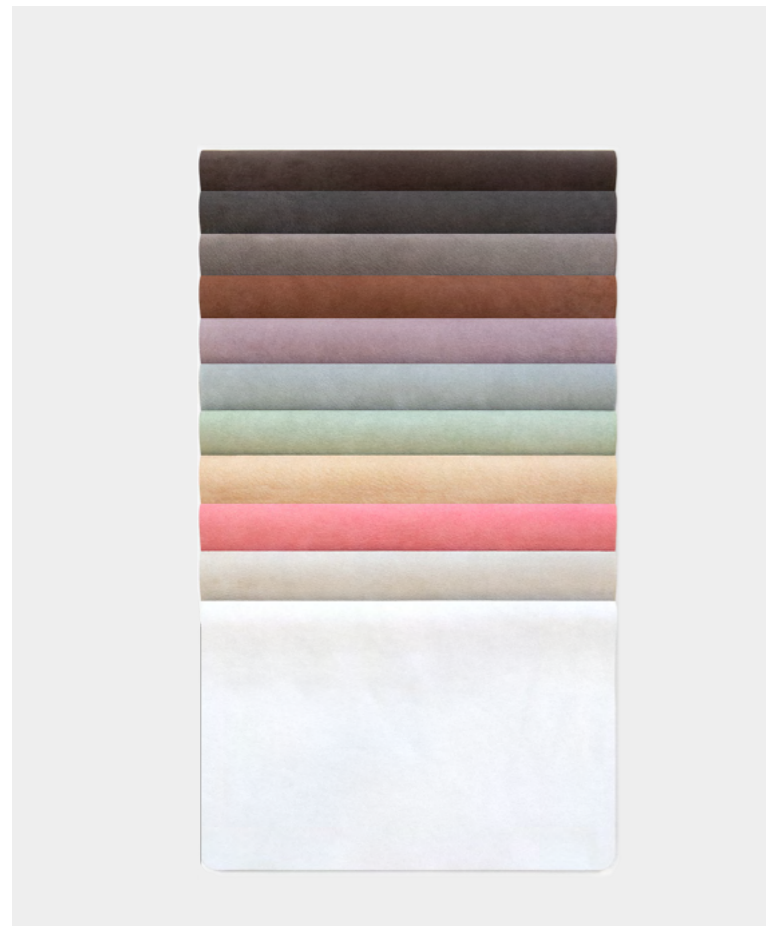


40786 - RUST



Leather price group

**DUET** DOUBLE-SIDED ANILINE LEATHER



**TYPE**  
ANILINE LEATHER

**ORIGIN**  
EUROPEAN RAWHIDE

**SURFACE**  
SMOOTH GRAIN STRUCTURE OF NUBUCK AND TEXTURED SURFACE OF SUEDE

**FINISH**  
NUBUCK: NATURAL WITH A SCOTCHGUARD® PROTECTION ON THE SURFACE.  
SUEDE SIDE: NO FINISH

**TANNAGE**  
CHROME

**DYE**  
WATER-BASED ANILINE DYE

**THICKNESS**  
1,1 - 1,3 MM

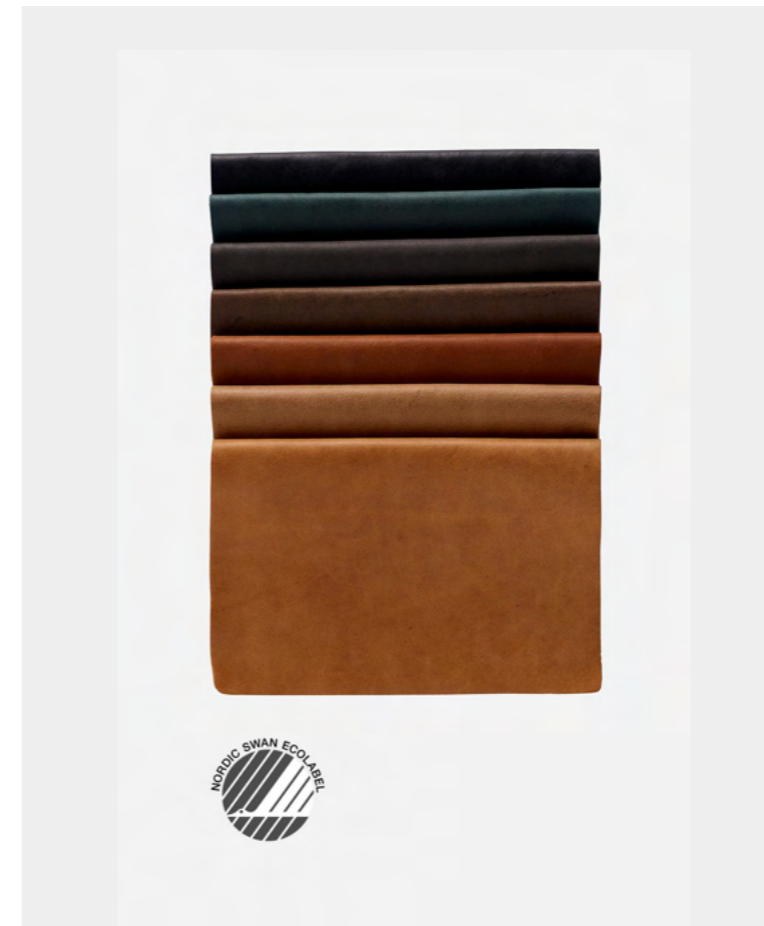
**SPECIFICATIONS**  
TVOC TESTED. WATER AND DIRT REPELLENT, STAIN RESISTANT

**CARE**  
ONLY VACUUM WITH A SOFT BRUSH  
PROTECT FROM DIRECTLY SUNLIGHT

*DEVELOPED IN COLLABORATION WITH TOM DIXON*



**DUNES** VELVETY ANILINE LEATHER



**TYPE**  
ANILINE LEATHER

**ORIGIN**  
EUROPEAN RAWHIDE

**SURFACE**  
MATT SURFACE WITH A VELVETY FEEL

**FINISH**  
SPECIAL LEATHER OIL

**TANNAGE**  
CHROME-FREE

**DYE**  
WATER-BASED ANILINE DYE

**THICKNESS**  
1,1 - 1,3 MM

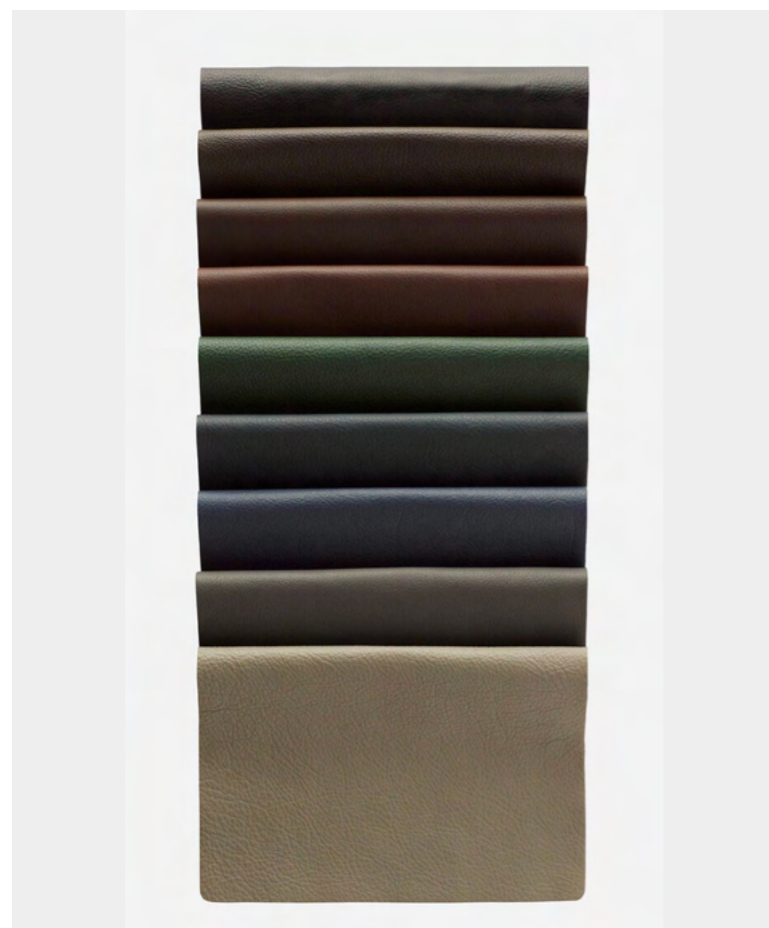
**CERTIFICATES**  
NORDIC SWAN ECOLABEL, EU ECOLABEL

**CARE**  
ONLY VACUUM WITH A SOFT BRUSH  
PROTECT FROM DIRECTLY SUNLIGHT



# SAVANNE

CLASSIC SEMI-ANILINE LEATHER



**TYPE**  
SEMI-ANILINE LEATHER

**ORIGIN**  
EUROPEAN RAWHIDE

**SURFACE**  
MATT SURFACE WITH VISIBLE TEXTURE

**FINISH**  
LIGHT SURFACE PROTECTION

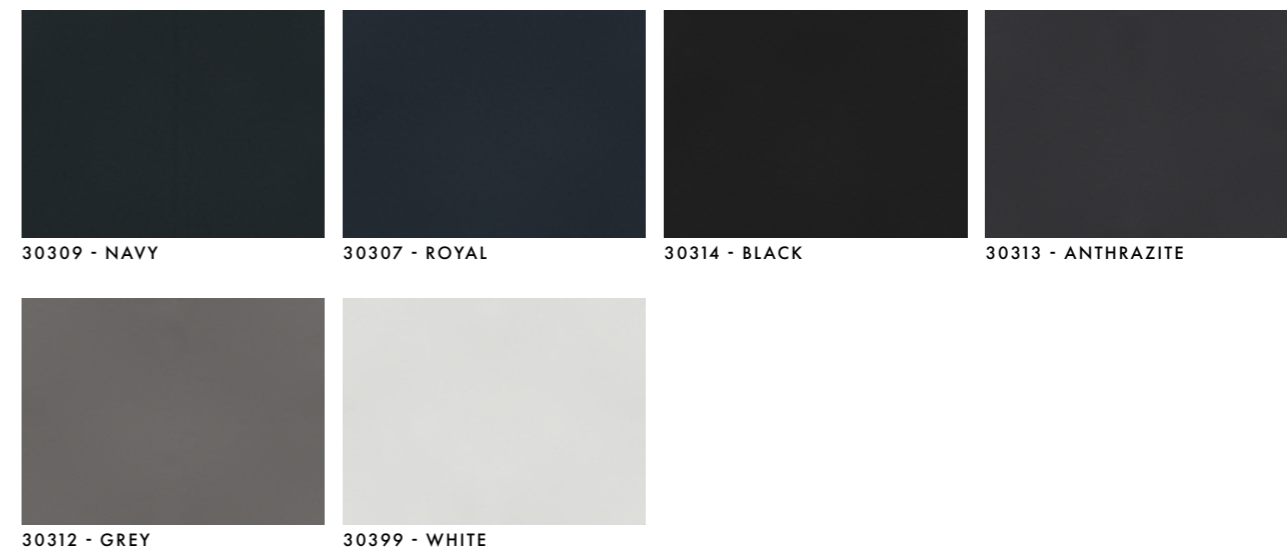
**TANNAGE**  
CHROME

**DYE**  
WATER-BASED ANILINE DYE

**THICKNESS**  
1,0 - 1,2 MM

**CERTIFICATE**  
OEKO-TEX

**CARE**  
VACUUM WITH A SOFT BRUSH  
PROTECT FROM DIRECTLY SUNLIGHT



# SPECTRUM SEMI-ANILINE AND FULL-GRAIN LEATHER



**TYPE**  
SEMI-ANILINE LEATHER

**ORIGIN**  
EUROPEAN RAWHIDE

**SURFACE**  
MATT, SMOOTH SURFACE WITH VISIBLE TEXTURE

**FINISH**  
LIGHT SURFACE PROTECTION

**TANNAGE**  
CHROME

**DYE**  
WATER-BASED ANILINE DYE

**THICKNESS**  
1,0 - 1,2 MM

**CERTIFICATE**  
OEKO-TEX

**CARE**  
VACUUM WITH A SOFT BRUSH  
PROTECT FROM DIRECTLY SUNLIGHT







30089 - MANDRAIN

30173 - BURNED ORANGE

30090 - SUNSET

30092 - BURN



30091 - SUMMER

30122 - APRICOT

30172 - RED BROWN

30121 - PAPAYA

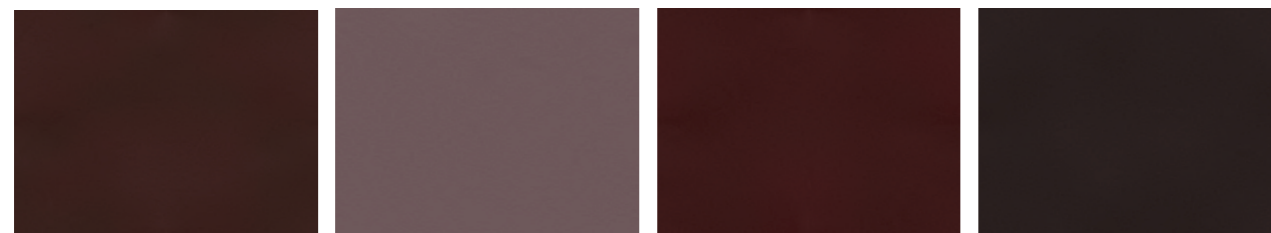


30119 - BRICK

30171 - TERRACOTTA

30109 - RUST

30118 - CORAL



30116 - RUBY

30088 - LAVENDER

30117 - WINE RED

30115 - BLACKBERRY



30113 - CHOCOLATE

30112 - COFFEE

30111 - TOBACCO

30086 - MUD



30087 - BROWN

30146 - CINNAMON

30110 - HAVANA

30108 - TAN



30094 - TERRA

30153 - MOCCA

30107 - COGNAC

30155 - BRANDY



30093 - WALNUT

30120 - MANGO

30152 - LIGHT TAN

30145 - SAFARI



30147 - MIX

30149 EARTH

30148 - BARK

30151 - PARCHMENT



30150 - ALMOND

30154 - TOFFEE

30106 - CAMEL

30095 - NOUGAT



30103 - CORN

30096 - GINGER

30102 - HONEY

30101 - CREAM



30105 - MARBLE

30160 - MINERAL

30076 - SAND

30100 - EGGSHELL



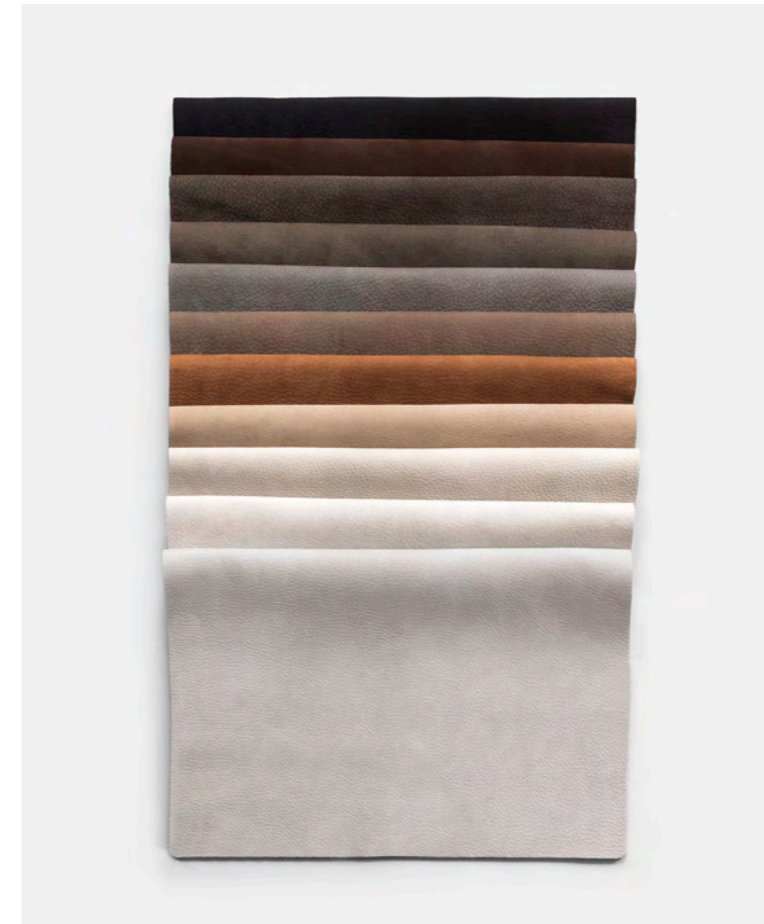
30075 - ICE

30161 - IVORY

30140 - WHITE

# ROYAL NUBUCK

HIGH-END ANILINE LEATHER



**TYPE**  
ANILINE LEATHER

**ORIGIN**  
EUROPEAN RAWHIDE

**SURFACE**  
SMOOTH, VELVETY GRAIN STRUCTURE

**FINISH**  
SCOTCHGUARD® PROTECTION, INSTANTLY PREVENTING LIQUIDS FROM PENETRATING THE LEATHER AND MAKES THE LEATHER MORE STAIN RESISTANT

**TANNAGE**  
CHROME

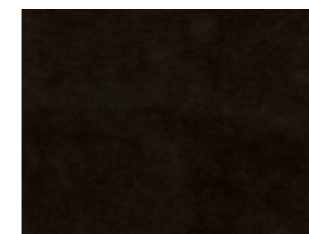
**DYE**  
WATER-BASED ANILINE DYE

**THICKNESS**  
1,4 - 1,6 MM

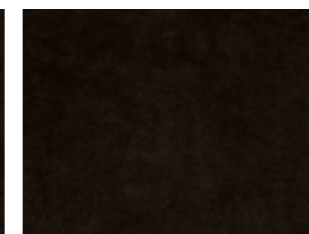
**CARE**  
ONLY VACUUM WITH A SOFT BRUSH  
PROTECT FROM DIRECTLY SUNLIGHT

3

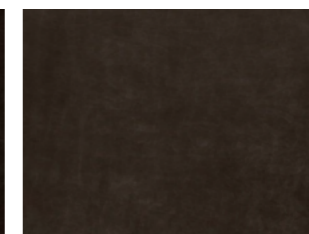
Leather price group



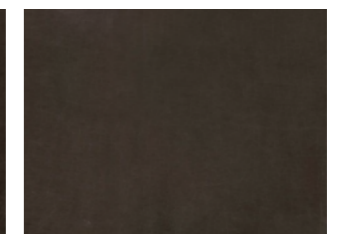
30259 - BLACK



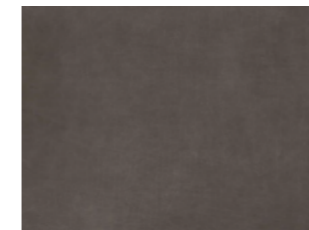
30258 - HAVANNA



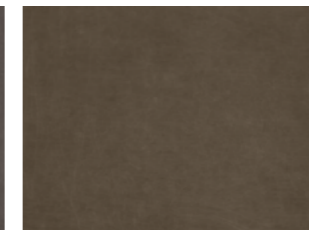
30255 - STONE



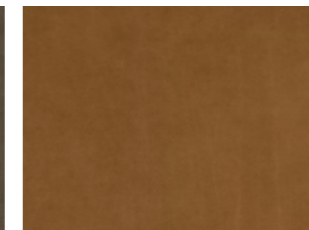
30257 - CINNAMON



30254 - LAVA



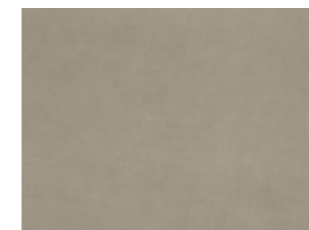
30256 - ALMOND



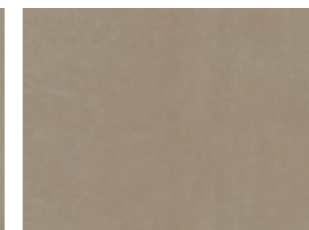
30260 - COGNAC



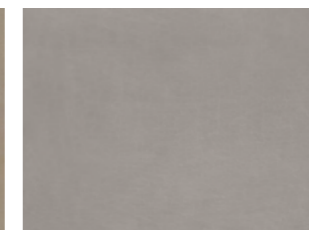
30253 - ECRU



30251 - MINERAL



30252 - OFF-WHITE



30250 - LIGHT GREY



**WOUD**