

**WOUD FABRIC  
AND LEATHER  
SELECTION**



# WOUD UPHOLSTERY SELECTION

Get an overview of our defined fabric and leather options. The upholstery programme for Collar, Flora, Nakki and Meadow consists of different fabric and leather price groups. Covering more than 750 textile and leather (Nakki and Meadow only) alternatives from high-quality textile manufacturer brands,

Custom upholstery orders are ready to ship with standard delivery lead time of 8-10 weeks. It is possible to use customer's own materials (COM) with extended delivery lead times upon fabric approval. COM-prices are based on price group 1A.

Fire retardent foam is available upon request and standard for all Great Britain orders.

Please note that the presented colour references are only intended as a guide. For further information and care instructions, please see manufacturer websites:  
[kvadrat.dk](http://kvadrat.dk)  
[gabriel.dk](http://gabriel.dk)  
[sorensenleather.com](http://sorensenleather.com)

Explore our upholstered furniture at [wouddesign.com/fabric-collection/](http://wouddesign.com/fabric-collection/)

## TEXTILE PRICE GROUP 1A

Textafoam Alpine \*

## TEXTILE PRICE GROUP 1B

Reflect, Kvadrat  
Cura, Gabriel  
Cyber, Gabriel  
Step Melange, Gabriel

## TEXTILE PRICE GROUP 2A

Remix 3, Kvadrat  
Re-wool, Kvadrat  
Gaja C2C, Gabriel

## TEXTILE PRICE GROUP 2B

Ara, Kvadrat  
Barnum, Nevotex  
Clay, Kvadrat  
Ecriture, Kvadrat  
Fiord 2, Kvadrat  
Hallingdal 65, Kvadrat  
Steelcut trio 3, Kvadrat  
Vidar 4, Kvadrat

## TEXTILE PRICE GROUP 3A

Harald 3, Kvadrat  
Nara, Kvadrat  
Sisu, Kvadrat

## LEATHER PRICE GROUP 1

Sørensen Leather Nuance  
Sørensen Leather Envy

## LEATHER PRICE GROUP 2

Sørensen Leather Savanne  
Sørensen Leather Spectrum  
Sørensen Leather Duet  
Sørensen Leather Dunes

## LEATHER PRICE GROUP 3

Sørensen Leather Royal nubuck



TEXTILE/LEATHER	COLLAR	FLORA	MEADOW	NAKKI
<b>TEXTILE PRICE GROUP 1A</b>				
<i>Alpine, Textafoam</i>	●	●	●	●
<b>TEXTILE PRICE GROUP 1B</b>				
<i>Reflect, Kvadrat</i>	●	●	●	●
<i>Cura, Gabriel</i>	●	●	●	●
<i>Cyber, Gabriel</i>	●	●	●	●
<i>Step Melange, Gabriel</i>	●	●	●	●
<b>TEXTILE PRICE GROUP 2A</b>				
<i>Remix 3, Kvadrat</i>	●	●	●	●
<i>Re-wool, Kvadrat</i>	●	●	●	●
<i>Gaja C2C, Gabriel</i>	●	●	●	●
<b>TEXTILE PRICE GROUP 2B</b>				
<i>Ara, Kvadrat</i>	●	●	●	●
<i>Barnum, Nevotex</i>	●	●	●	●
<i>Clay, Kvadrat</i>	●	●	●	●
<i>Ecriture, Kvadrat</i>	●	●	●	●
<i>Fiord 2, Kvadrat</i>	●	●	●	●
<i>Hallingdal 65, Kvadrat</i>	●	●	●	●
<i>Steelcut trio 3, Kvadrat</i>	●	●	●	●
<i>Vidar 4, Kvadrat</i>	●	●	●	●
<b>TEXTILE PRICE GROUP 3A</b>				
<i>Harald 3, Kvadrat</i>	●	●		●
<i>Nara, Kvadrat</i>	●	●	●	●
<i>Sisu, Kvadrat</i>	●	●	●	●
<b>LEATHER PRICE GROUP 1</b>				
<i>Nuance, Sørensens Leather</i>			●	●
<i>Envy, Sørensens Leather</i>			●	●
<b>LEATHER PRICE GROUP 2</b>				
<i>Savanne, Sørensens Leather</i>			●	●
<i>Spectrum, Sørensens Leather</i>			●	●
<i>Duet, Sørensens Leather</i>			●	●
<i>Dunes, Sørensens Leather</i>			●	●
<b>LEATHER PRICE GROUP 3</b>				
<i>Royal nubuck, Sørensens Leather</i>			●	●



TEXTAAFOAM

# ALPINE AUTHENTIC BOUCLÉ



**COMPOSITION**  
96% PES, 4% PAC

**MARTINDALE**  
75.000

**PILLING**  
4

**CARE INSTRUCTIONS**

**LIGHTFASTNESS**  
5

**TEAR GROWTH RESISTANCE**  
WARP: 136,9  
WEFT: 176,3

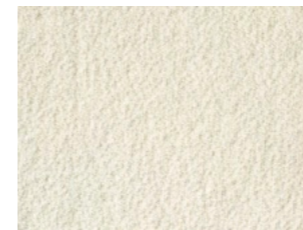
**SEAM SLIPPAGE**  
WARP: 2.0  
WEFT: 2.0

**WIDTH AND WEIGHT**  
+/- 143 CM  
+/- 680 G/M

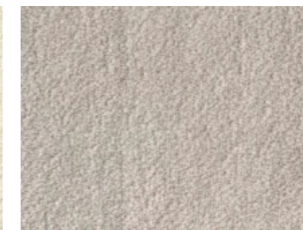
**TENSILE STRENGTH**  
WARP: 1514  
WEFT: 717

## SELECTED UPHOLSTERY OPTIONS

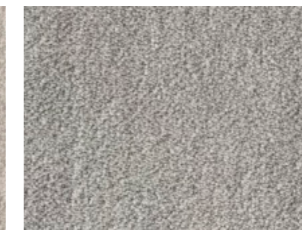
PLEASE NOTE THAT THE COLOUR REFERENCES ARE ONLY INTENDED AS A GUIDE



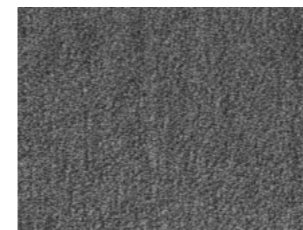
IVORY 101



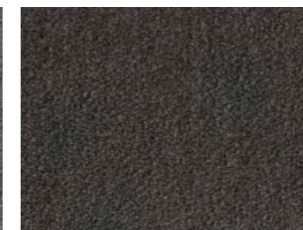
NATURAL 01



STEEL 149



GREY 65



DARK BROWN 18



ONYX 169

# 1A

Textile price group



UPHOLSTERY  
TEXTAAFOAM, ALPINE, 101

# 1B

Textile price group

# REFLECT

RECYCLED POLYESTER TWILL WEAVE TEXTILE

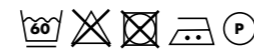


**COMPOSITION**  
100% POST-CONSUMER RECYCLED POLYESTER

**MARTINDALE**  
100.000

**PILLING**  
4

**CARE INSTRUCTIONS**



**LIGHTFASTNESS**  
6

**SUSTAINABILITY**  
GREENGUARD GOLD, HPD, EPD

**SEAM SLIPPAGE**  
WARP: 2.5  
WEFT: 2.5

**WIDTH AND WEIGHT**  
+/- 140 CM  
+/- 430 G/M

**MANUFACTURED IN**  
HOLLAND

**DESIGNER**  
PATRICIA URQUIOLA



0104

0114

0124

0154

0164

0174

0184

0194

0204

0224

0274

0344



0374

0384

0404

0434

0444

0464

0564

0574

0614

0644

0674

0694

0714

0744

0774

0794

0824

0884

0924

0944

0964

0984

0994

**CURA** TWO-COLOURED FABRIC MADE FROM POST-CONSUMER RECYCLED POLYESTER



**COMPOSITION**  
98% POST-CONSUMER RECYCLED POLYESTER  
2% POLYESTER

**MARTINDALE**  
100.000

**PILLING**  
4-5

**CARE INSTRUCTIONS**

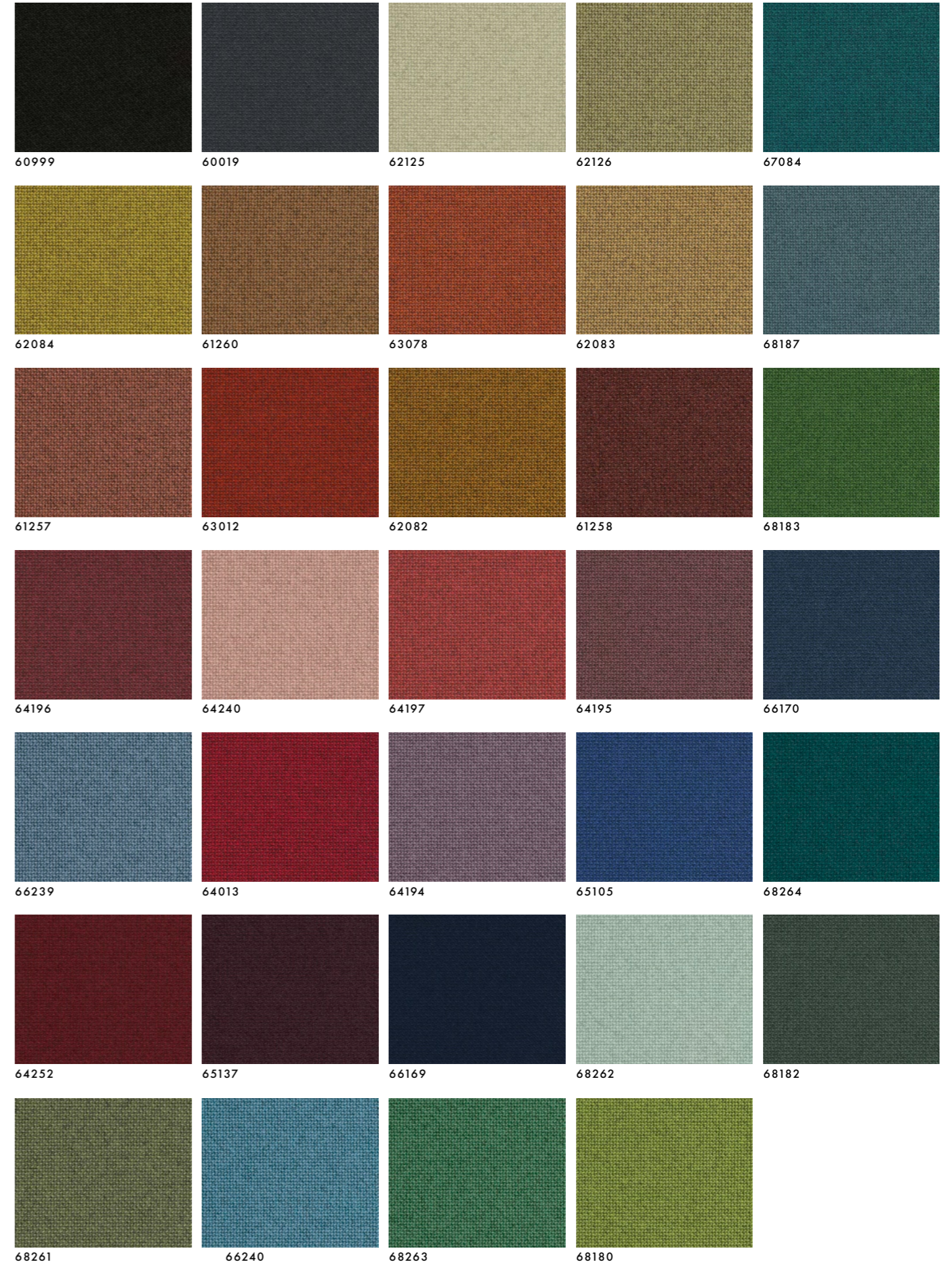
**LIGHTFASTNESS**  
5-8

**SUSTAINABILITY**  
STANDARD 100 BY OEKO-TEX®  
EU ECOLABEL

**WIDTH AND WEIGHT**  
+/- 140 CM  
+/- 420 G/M

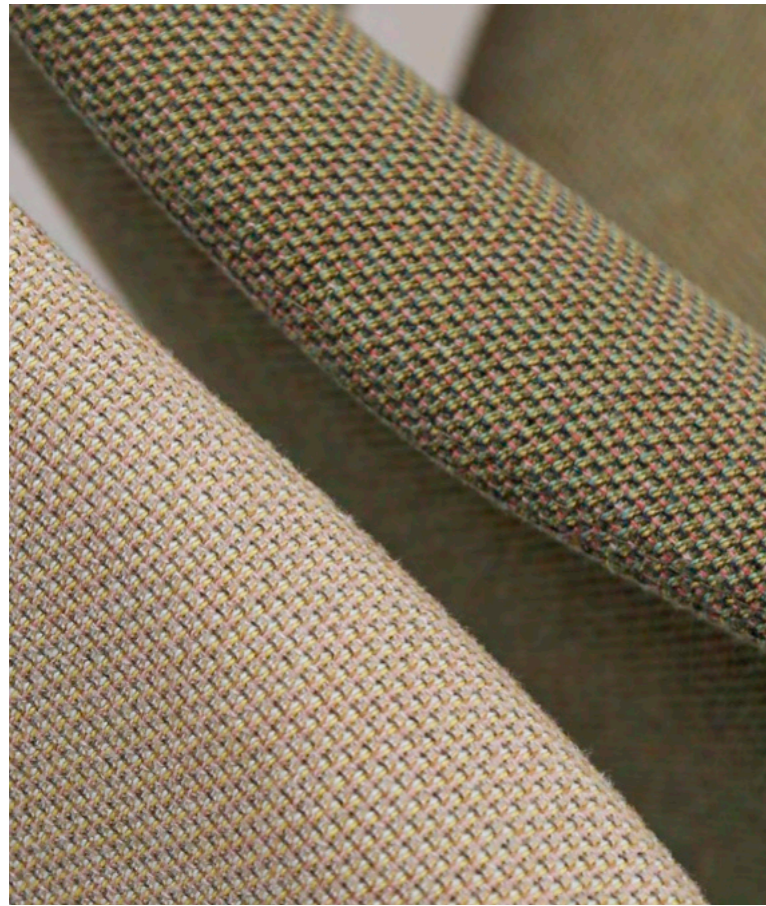
**FLAMMABILITY**  
CONTAINS NO FLAME RETARDANT  
CHEMICALS

**DESIGNER**  
CENK KIRIKOGLU



# CYBER

MATT MULTI-COLOURED LOW IMPACT FABRIC



**COMPOSITION**  
100% POST-CONSUMER RECYCLED POLYESTER

**MARTINDALE**  
120.000

**PILLING**  
4-5

**CARE INSTRUCTIONS**  
40 P

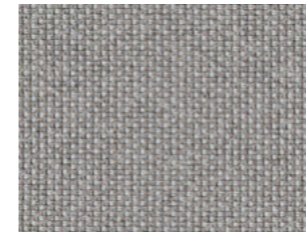
**LIGHTFASTNESS**  
7-8

**SUSTAINABILITY**  
STANDARD 100 BY OEKO-TEX®  
EU ECOLABEL

**WIDTH AND WEIGHT**  
+/- 140 CM  
+/- 570 G/M

**FLAMMABILITY**  
CONTAINS NO FLAME RETARDANT  
CHEMICALS

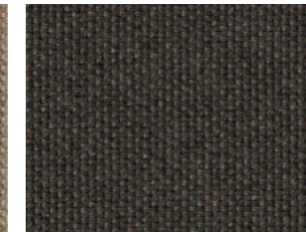
**DESIGNER**  
CENK KIVRIKOGLU



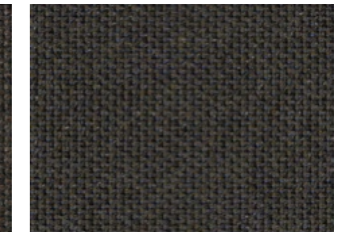
1901



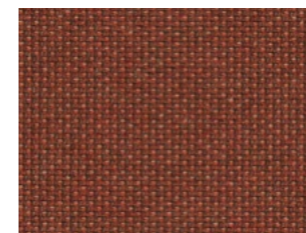
2001



2101



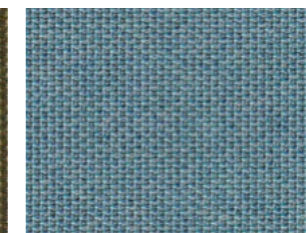
2102



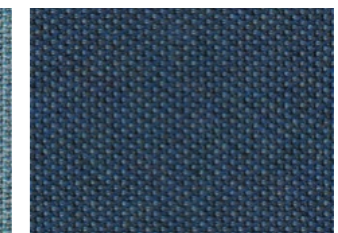
2201



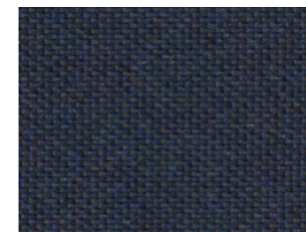
2301



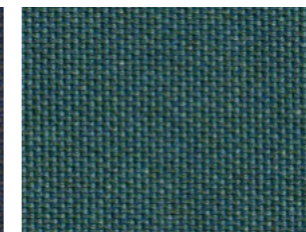
2401



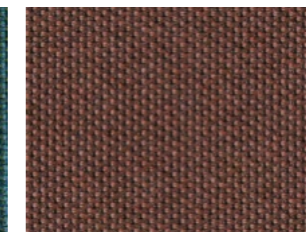
2501



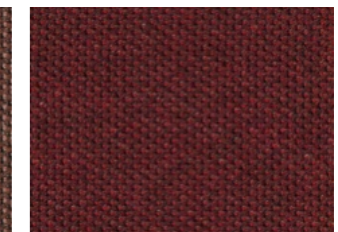
2502



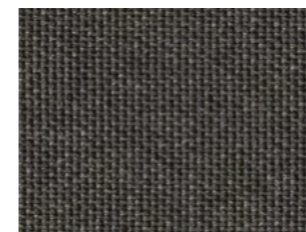
2601



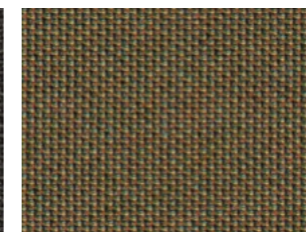
2701



2801



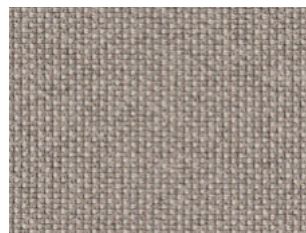
2901



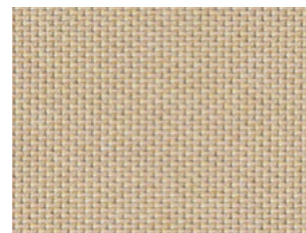
3001



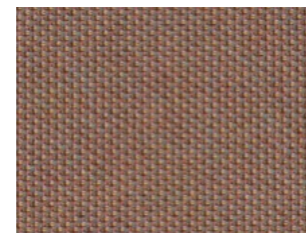
3101



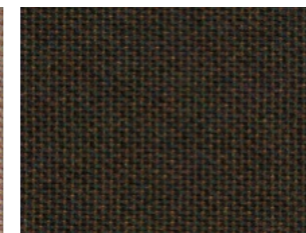
1101



1102



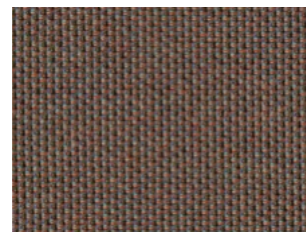
1201



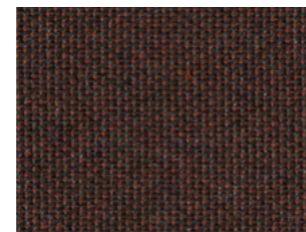
1301



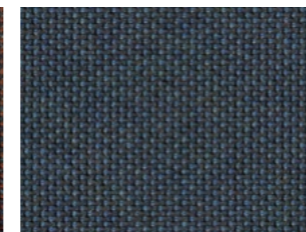
1302



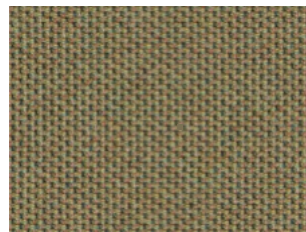
1401



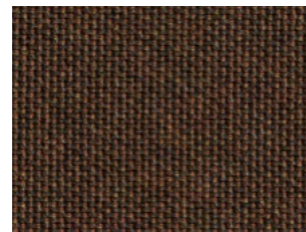
1501



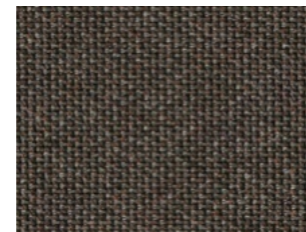
1601



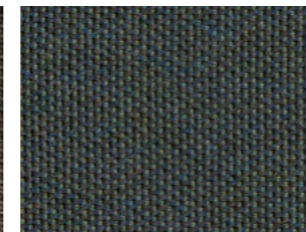
1701



1801



1802

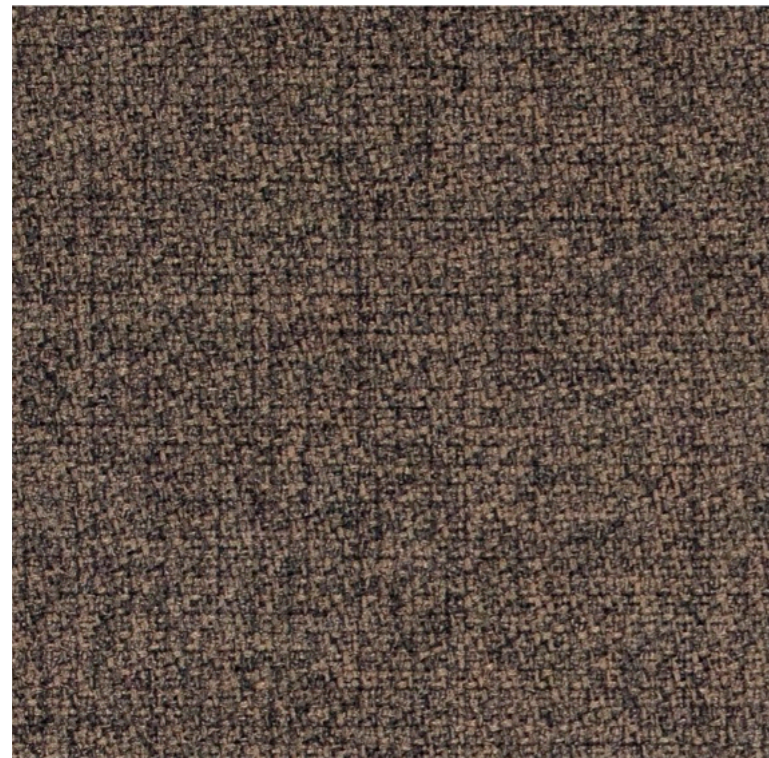


1803



# STEP MELANGE

DELICATE MELANGE EFFECT

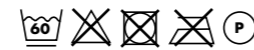


**COMPOSITION**  
100% TREVIRA CS (POLYESTER)

**MARTINDALE**  
100.000

**PILLING**  
4-5

**CARE INSTRUCTIONS**

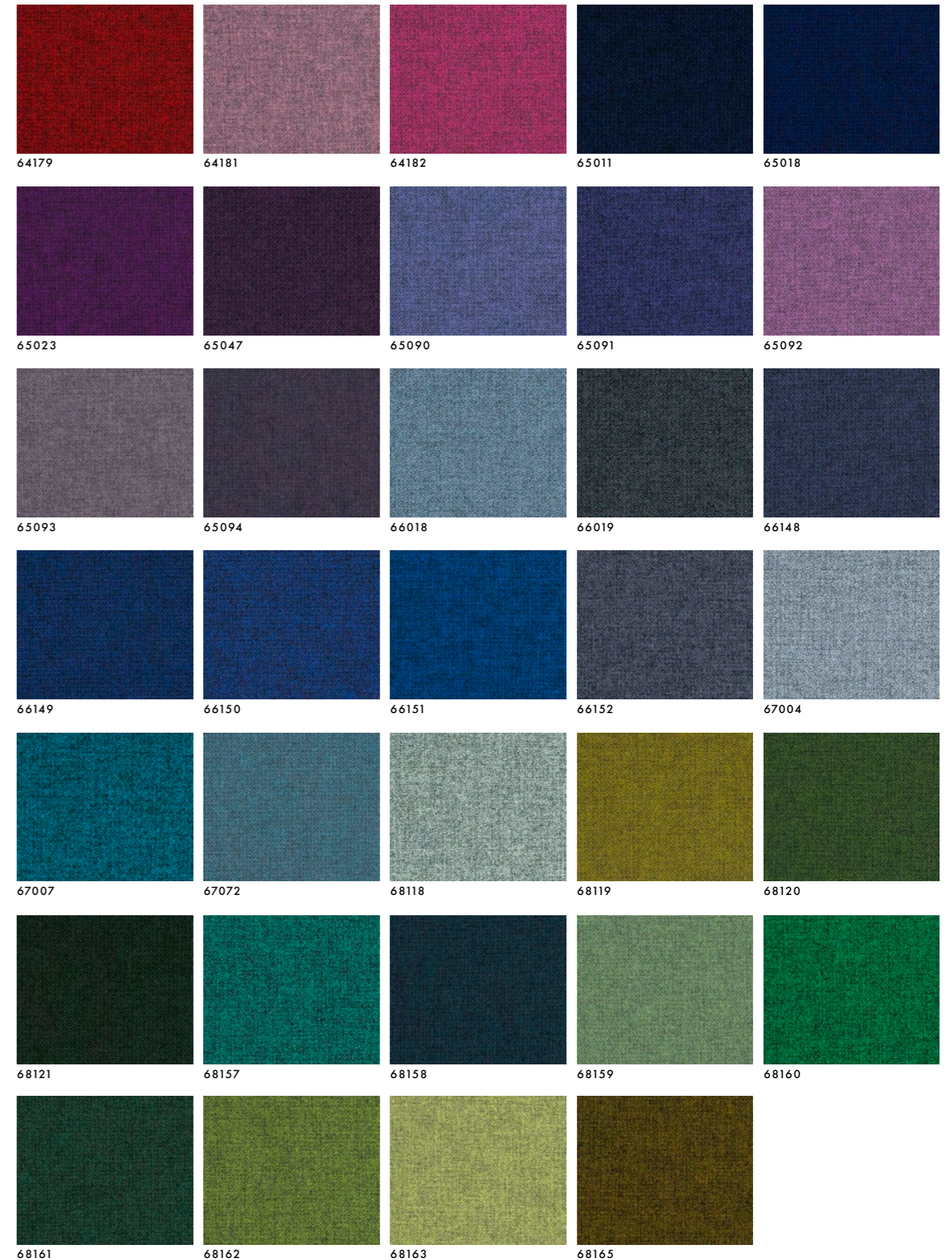
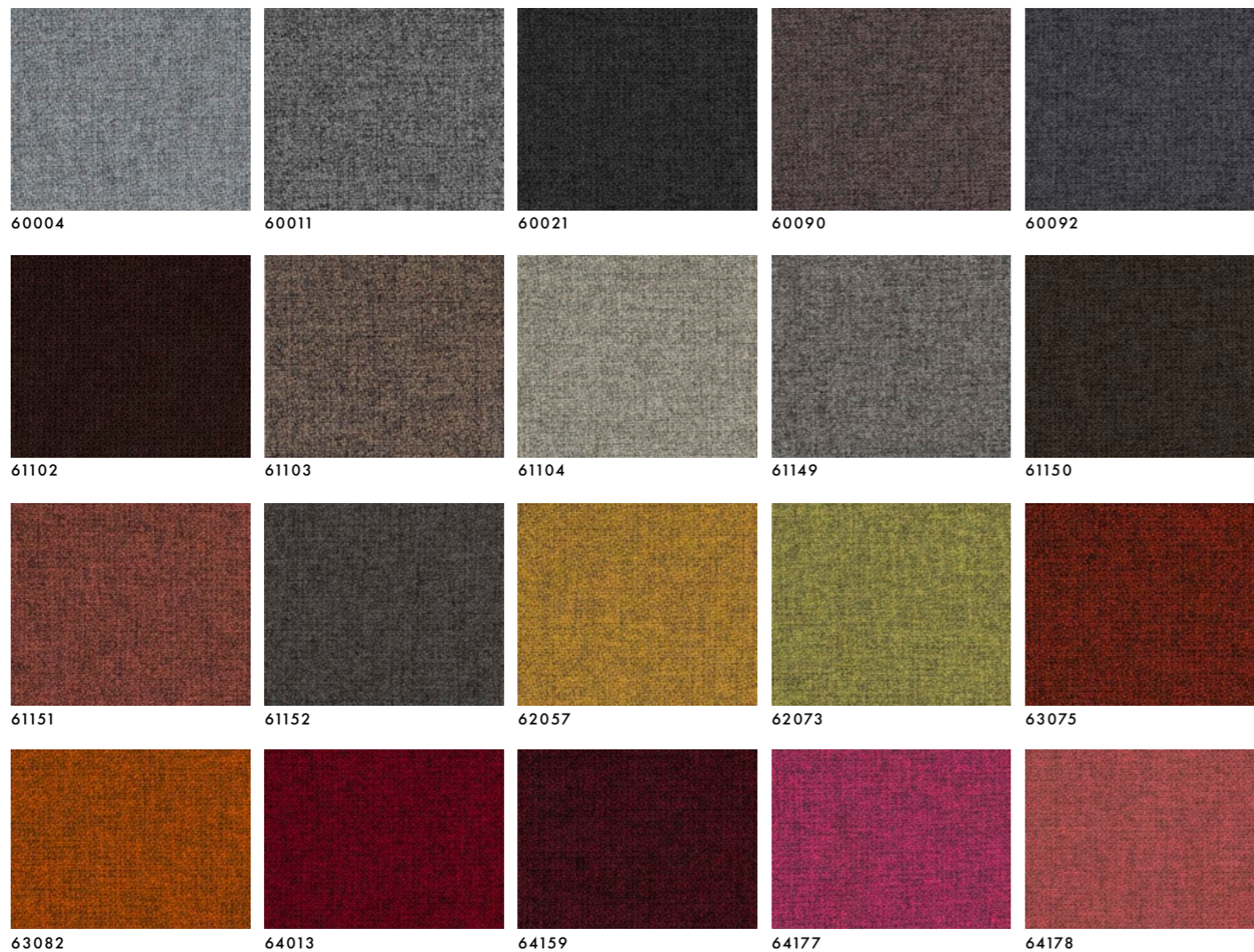


**LIGHTFASTNESS**  
5-7

**SUSTAINABILITY**  
STANDARD 100 BY OEKO-TEX®  
EU ECOLABEL  
MEETS MÖBELFAKTA REQUIREMENTS

**WIDTH AND WEIGHT**  
+/- 140 CM  
+/- 470 G/M

**FLAMMABILITY**  
POWERFUL FIRE-RESISTANT



60004 60011 60021 60090 60092

61102 61103 61104 61149 61150

61151 61152 62057 62073 63075

63082 64013 64159 64177 64178

64179 64181 64182 65011 65018

65023 65047 65090 65091 65092

65093 65094 66018 66019 66148

66149 66150 66151 66152 67004

67007 67072 68118 68119 68120

68121 68157 68158 68159 68160

68161 68162 68163 68165

2A

Textile price group

KVADRAT

PRICE GROUP 2A

## REMIX 3

UNICOLOUR FROM A DISTANCE, MELANGE WHEN YOU GET CLOSER



### COMPOSITION

90% NEW WOOL WORSTED, 10% NYLON

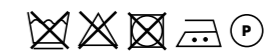
### MARTINDALE

100.000

### PILLING

4 (ISO 1-5)

### CARE INSTRUCTIONS



### LIGHTFASTNESS

5-7

### SEAM SLIPPAGE

WARP: 5

WEFT: 3

### WIDTH AND WEIGHT

+/- 140 CM

+/- 420 G/M

### SUSTAINABILITY

EU ECOLABEL, GREENGUARD GOLD, HPD, EPD

### MANUFACTURED IN

UNITED KINGDOM

### DESIGNER

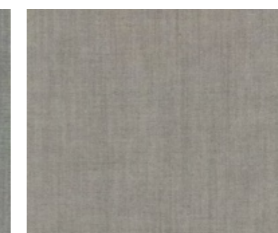
GIULIO RIDOLFO



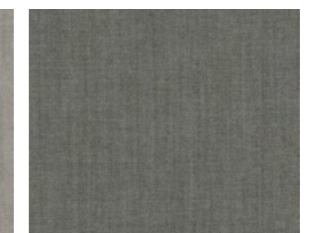
0113



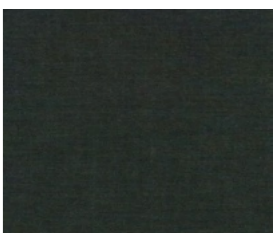
0123



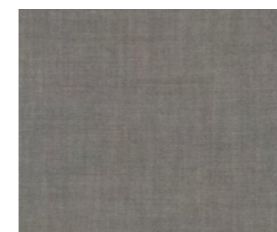
0126



0133



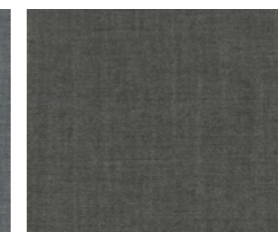
0973



0136



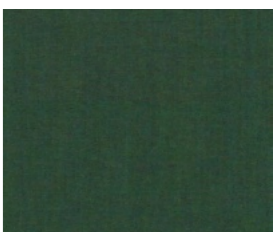
0143



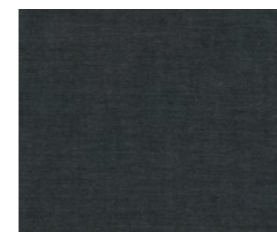
0152



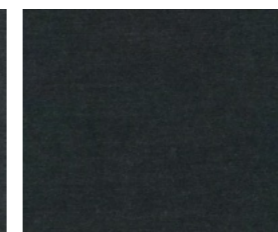
0163



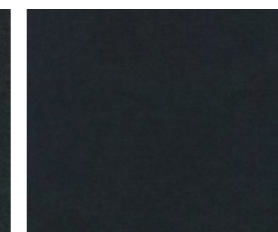
0982



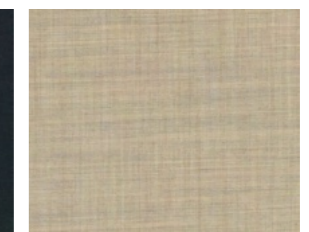
0173



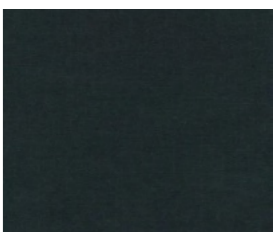
0183



0196



0223



0996

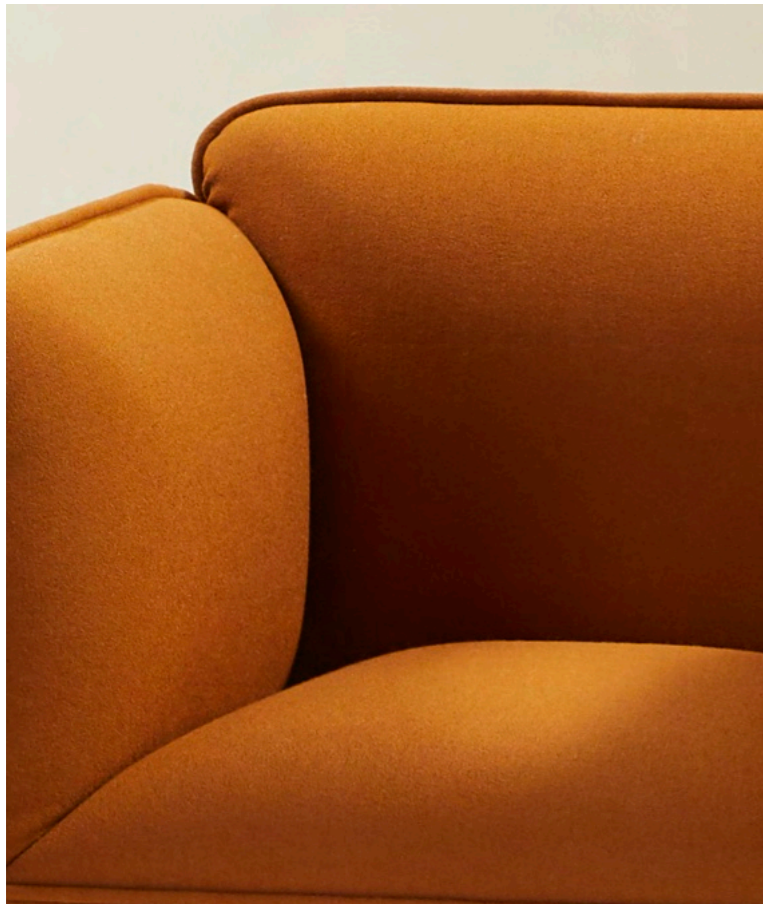
REMIX 3, KVADRAT  
PRICE GROUP 2A

REMIX 3, KVADRAT  
PRICE GROUP 2A



# GAJA C2C


PURE WOOL, CRADLE TO CRADLE CERTIFIED TEXTILE



**COMPOSITION**  
100% NEW ZEALAND WOOL, RECYCLABLE

**MARTINDALE**  
50.000

**PILLING**  
4-5

**CARE INSTRUCTIONS**  


**LIGHTFASTNESS**  
5-7

**SUSTAINABILITY**  
 GREENGUARD GOLD, HPD, EPD  
 CRADLE TO CRADLE CERTIFIED® SILVER  
 CONTAINS NO HARMFUL SUBSTANCES AND CAN BE COMPOSTED

**WIDTH AND WEIGHT**  
 +/- 140 CM  
 +/- 530 G/M

**FLAMMABILITY**  
CONTAINS NO FLAME RETARDANT CHEMICALS

**DESIGNER**  
DORTE BO BOJESEN



# RE-WOOL

DYNAMIC WOOL WITH A SUSTAINABLE PROFILE



**COMPOSITION**  
45% RECYCLED WOOL, 45% NEW WOOL  
WORSTED, 10% NYLON

**MARTINDALE**  
100.000

**PILLING**  
4 (ISO 1-5)

**CARE INSTRUCTIONS**  
☒ ☒ ☒ ☒ ☒

**LIGHTFASTNESS**  
6

**SEAM SLIPPAGE**  
WARP: 3,5  
WEFT: 5

**WIDTH AND WEIGHT**  
+/- 140 CM  
+/- 540 G/M

**SUSTAINABILITY**  
EU ECOLABEL, GREENGUARD GOLD,  
HPD, EPD

**MANUFACTURED IN**  
UNITED KINGDOM

**DESIGNER**  
MARGRETHE ODGAARD



# 2B

Textile price group

KVADRAT

PRICE GROUP 2B

## ARA DOTS OF COLOUR



**COMPOSITION**

92% NEW WOOL WORSTED, 8% NYLON

**MARTINDALE**

70.000

**PILLING**

4

**CARE INSTRUCTIONS**



**LIGHTFASTNESS**

5-6

**SUSTAINABILITY**

GREENGUARD GOLD, HPD, EPD

**SEAM SLIPPAGE**

WARP: 5

WEFT: 7

**WIDTH AND WEIGHT**

+/- 148 CM

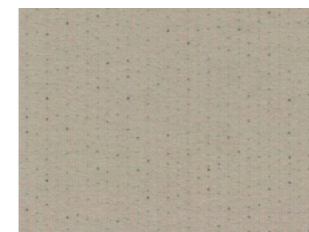
+/- 530 G/M

**MANUFACTURED IN**

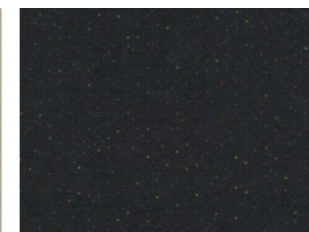
NORWAY

**DESIGNER**

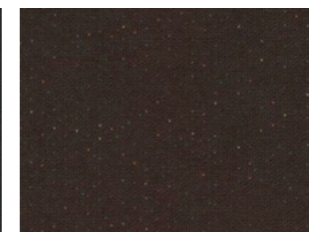
MARGRETHE ODGAARD



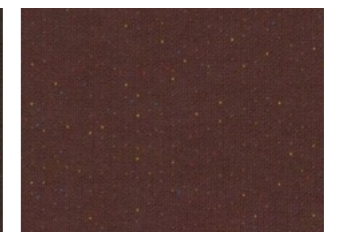
0104



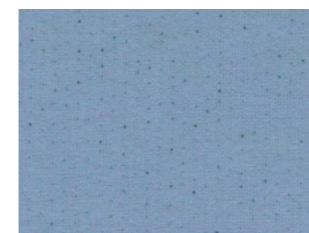
0194



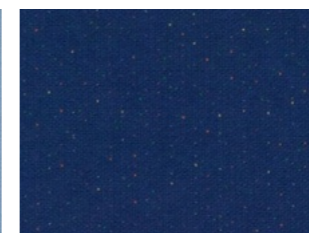
0294



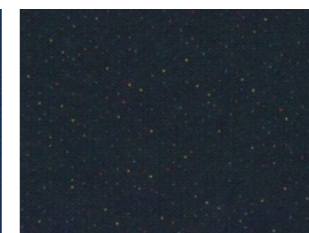
0354



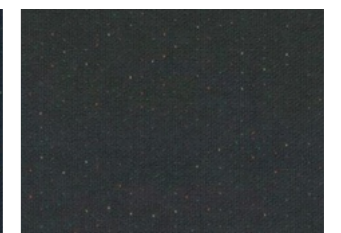
0724



0764



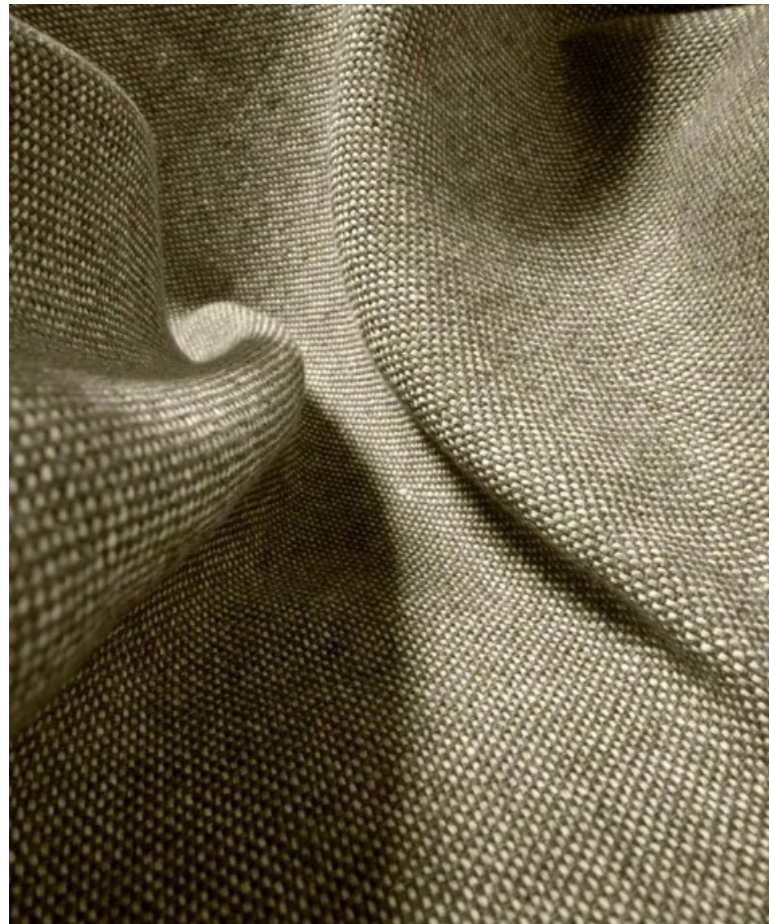
0794



0994

# CLAY

A MIX OF COLOURED YARNS



**COMPOSITION**  
76% LINEN, 21% COTTON, 3% POLYESTER

**MARTINDALE**  
45.000

**PILLING**  
4 (ISO 1-5)

**CARE INSTRUCTIONS**  
☒ ☒ ☒ ☒ ☒

**LIGHTFASTNESS**  
5-6

**SUSTAINABILITY**  
GREENGUARD GOLD, HPD, EPD

**SEAM SLIPPAGE**  
WARP: 2.75  
WEFT: 2.8

**WIDTH AND WEIGHT**  
+/- 140 CM  
+/- 1,090 G/M

**MANUFACTURED IN**  
TURKEY

**DESIGNER**  
VINCENT VAN DUYSSEN



0013



0014



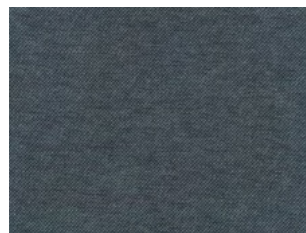
0015



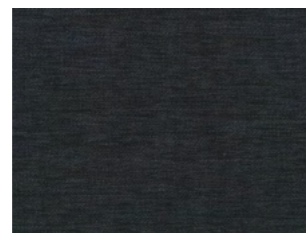
0016



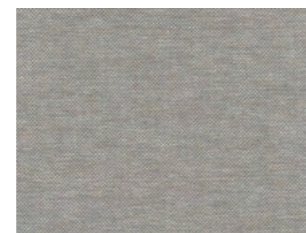
0017



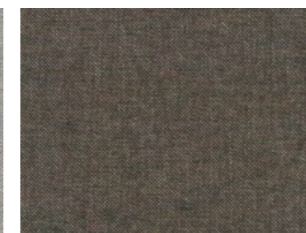
0001



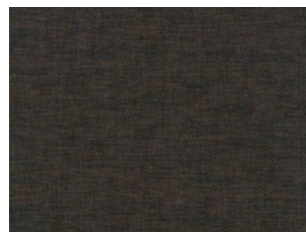
0002



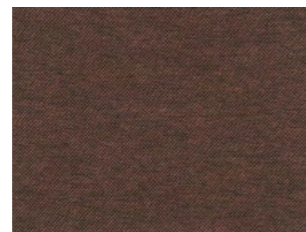
0003



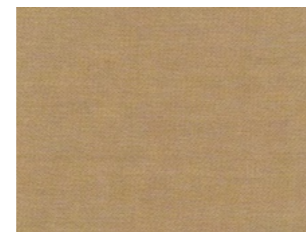
0004



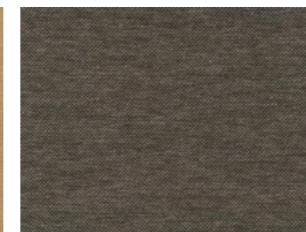
0005



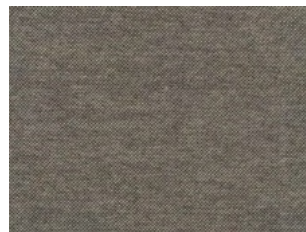
0006



0007



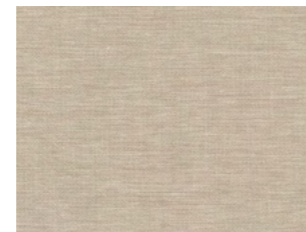
0008



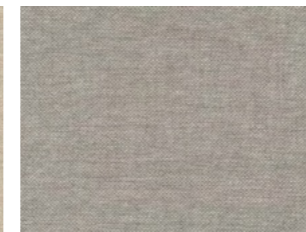
0009



0010

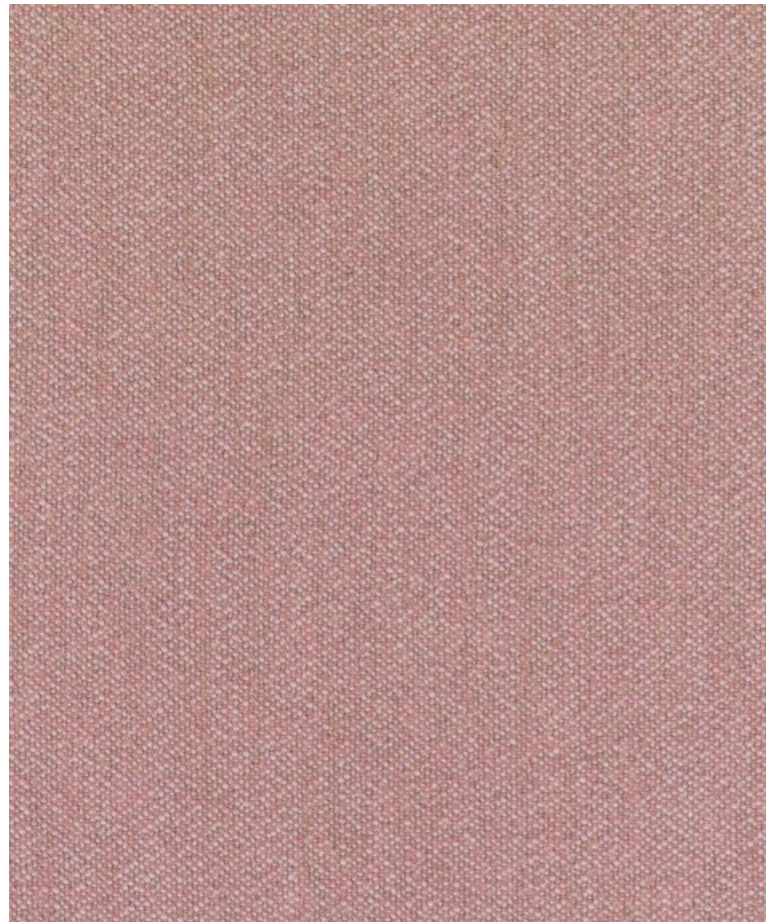


0011



0012

# ECRITURE MATT MELANGE BOUCLÉ



**COMPOSITION**  
40% POLYACRYLIC, 27% POLYESTER,  
18% VISCOSE, 9% LINEN, 6% COTTON

**MARTINDALE**  
70.000

**PILLING**  
4-5 (ISO 1-5)

**CARE INSTRUCTIONS**

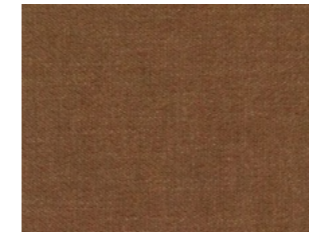
**LIGHTFASTNESS**  
6

**SUSTAINABILITY**  
GREENGUARD CERTIFIED, EPD

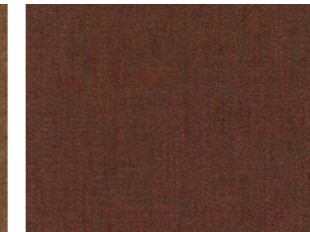
**SEAM SLIPPAGE**  
WARP: 2  
WEFT: 2

**WIDTH AND WEIGHT**  
+/- 140 CM  
+/- 1,040 G/M

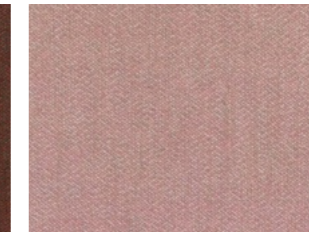
**MANUFACTURED IN**  
ITALY



0570



0580



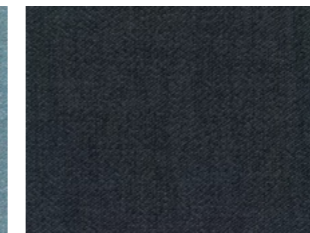
0640



0710



0760



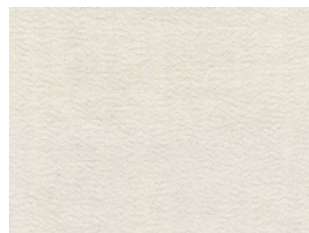
0780



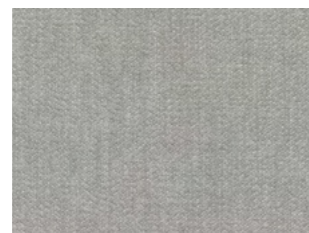
0910



0970



0100



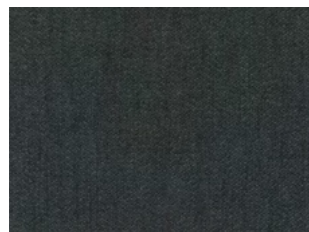
0130



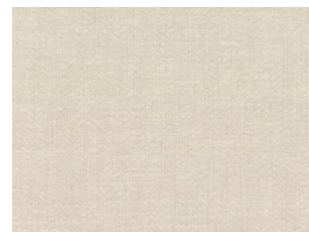
0150



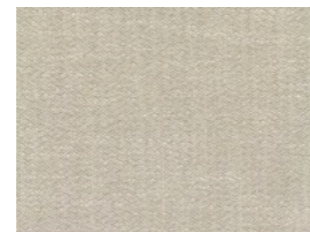
0170



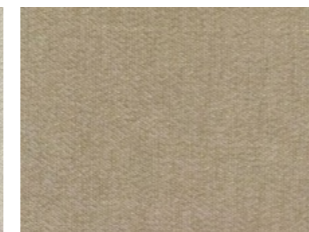
0180



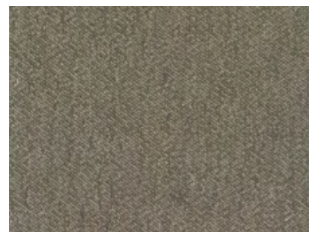
0200



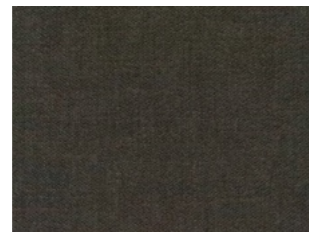
0210



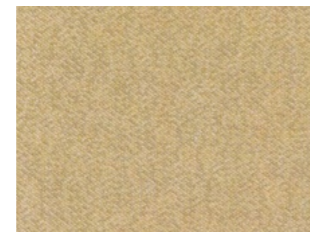
0240



0270



0380



0410



0470



# FIORD 2

WOOLEN UPHOLSTERY WITH MELANGE EFFECT



**COMPOSITION**  
92% NEW WOOL (WORSTED), 8% NYLON

**MARTINDALE**  
60.000

**PILLING**  
4-6 (ISO 1-5)

**CARE INSTRUCTIONS**  
[Washing symbols: no bleach, no iron, no dry clean, no tumble dry, no steam, no wring]

**LIGHTFASTNESS**  
6

**SEAM SLIPPAGE**  
WARP: 4,5  
WEFT: 5

**WIDTH AND WEIGHT**  
+/- 140 CM  
+/- 500 G/M

**SUSTAINABILITY**  
EU ECOLABEL, GREENGUARD GOLD,  
EPD, HPD

**MANUFACTURED IN**  
NORWAY

**DESIGNER**  
LOUISE SIGVARDT



0101 0121 0151 0171

0191 0201 0251 0262

0271 0322 00351 0371



0382 0391 0422 0442

0451 0521 0551 0562

0571 0581 0591 0642

0662 0672 0721 0751

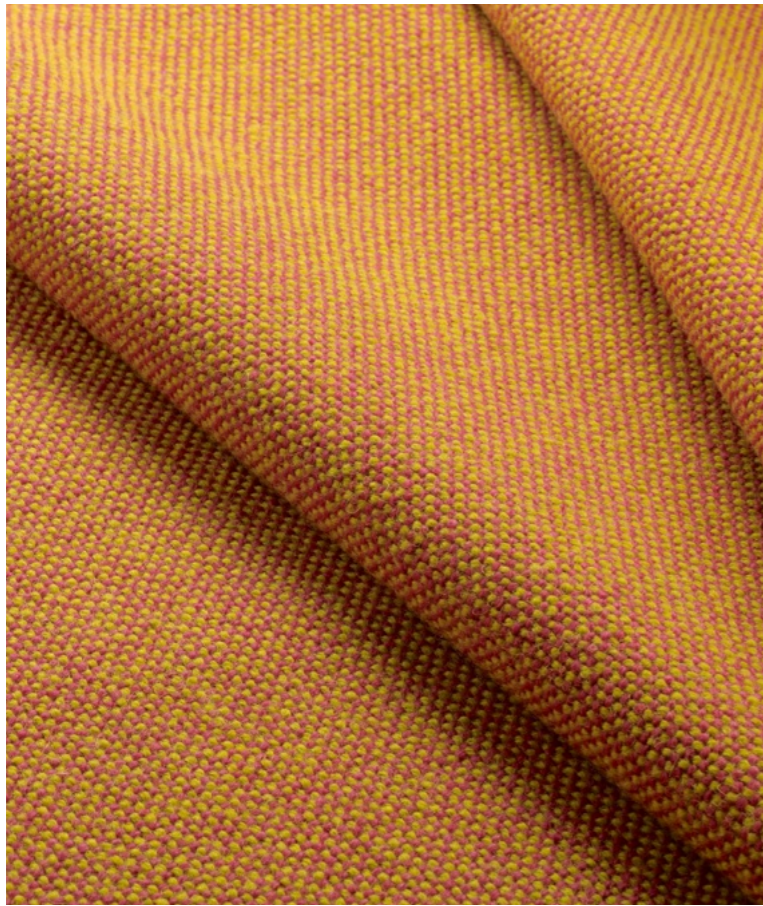
0762 0771 0782 0791

0821 0862 0951 0961

0971 0981 0991

# HALLINGDAL 65

A WOOLEN TEXTILE



**COMPOSITION**  
70% NEW WOOL, 30% VISCOSE

**MARTINDALE**  
100.000

**PILLING**  
3-4 (ISO 1-5)

**CARE INSTRUCTIONS**



**LIGHTFASTNESS**  
7

**SEAM SLIPPAGE**  
WARP: 4,5  
WEFT: 4

**WIDTH AND WEIGHT**  
+/- 130 CM  
+/- 795 G/M

**SUSTAINABILITY**  
EU ECOLABEL, GREENGUARD GOLD,  
EPD, HPD

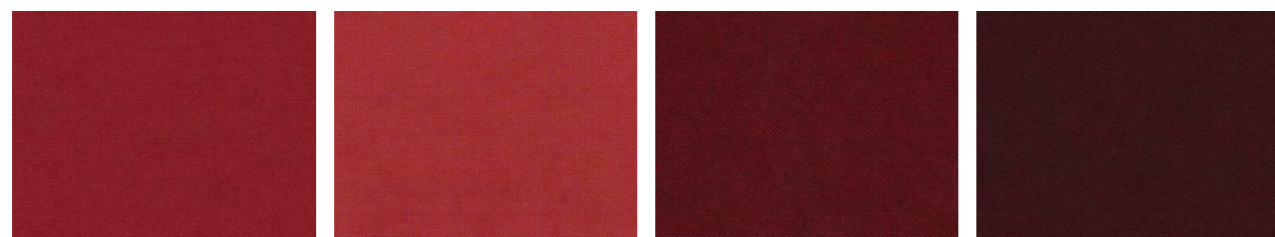
**MANUFACTURED IN**  
NORWAY

**DESIGNER**  
NANNA DITZEL

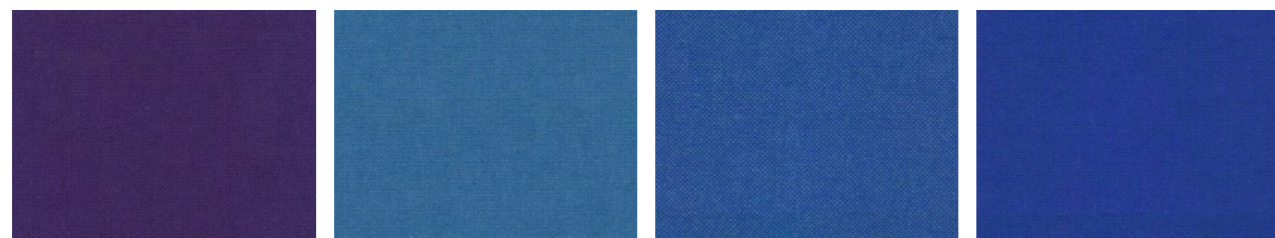


# STEELCUT TRIO 3

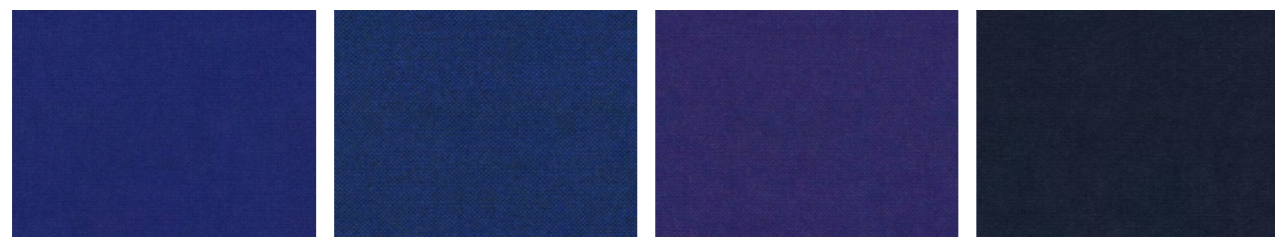
THREE-DIMENSIONAL, WOOLLEN SURFACE



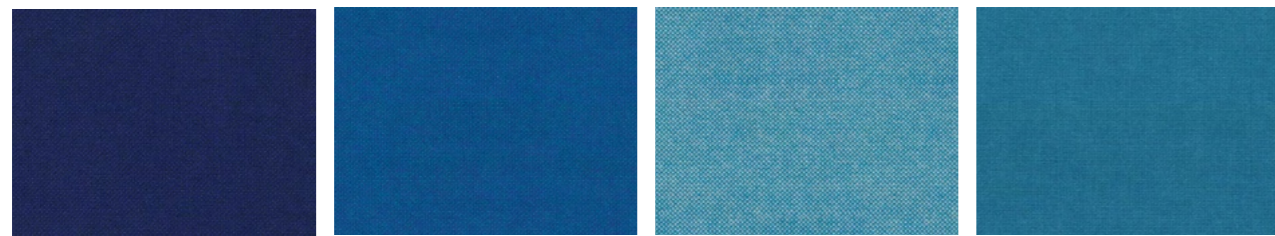
0674 0680 0687 0694



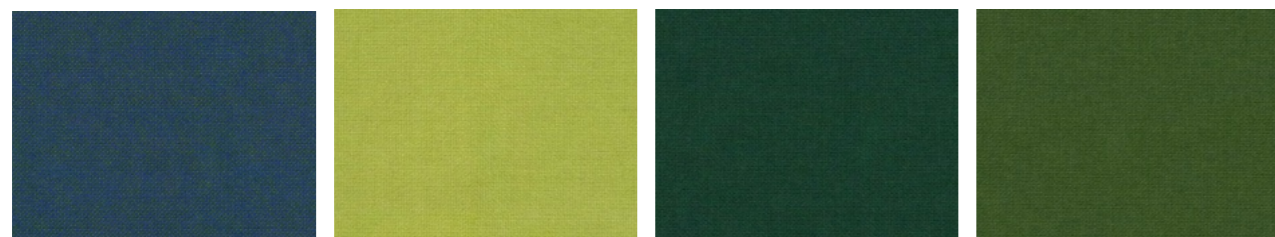
0702 0723 0733 0750



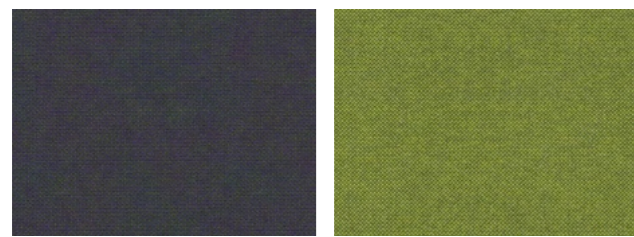
0753 0754 0763 0764



0773 0810 0840 0850



0890 0907 0944 0960



0968 0980



**COMPOSITION**

90% NEW WOOL (WORSTED), 10% NYLON

**MARTINDALE**

100.000

**PILLING**

4 (ISO 1-5)

**CARE INSTRUCTIONS**



**LIGHTFASTNESS**

6-7

**SEAM SLIPPAGE**

WARP: 3,5

WEFT: 2

**WIDTH AND WEIGHT**

+/- 140 CM

+/- 770 G/M

**SUSTAINABILITY**

EU ECOLABEL, GREENGUARD GOLD, EPD, HPD

**MANUFACTURED IN**

GREAT BRITAIN

**DESIGNER**

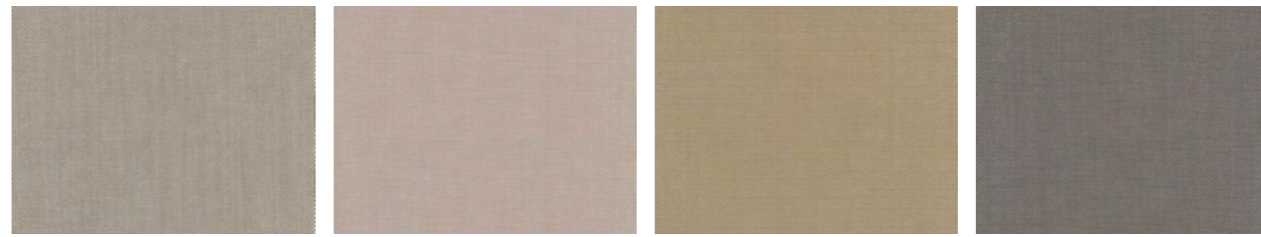
FRANS DIJKMEIJER



0105 0113 0124 0133



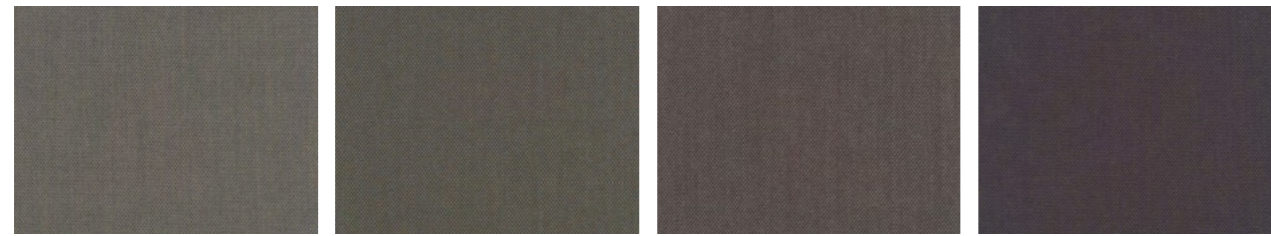
0153 0176 0195 0205



0213 0226 0236 0246

STEELCUT TRIO, KVADRAT

PRICE GROUP 2B

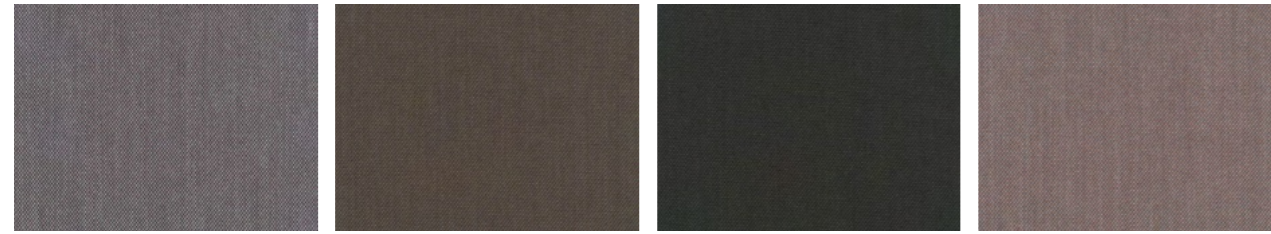


0253

0266

0276

0283

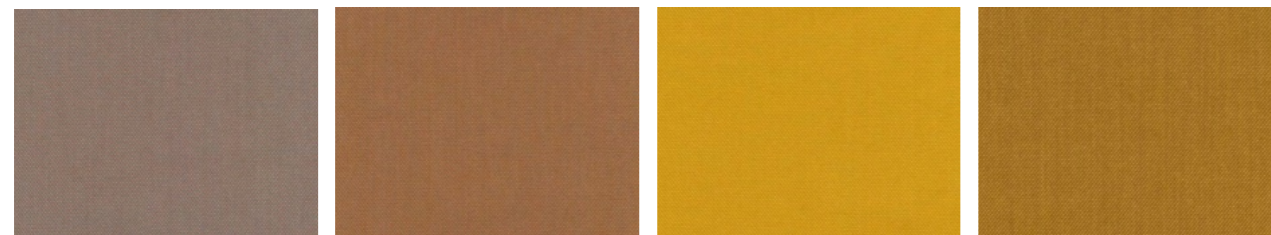


0336

0376

0383

0416

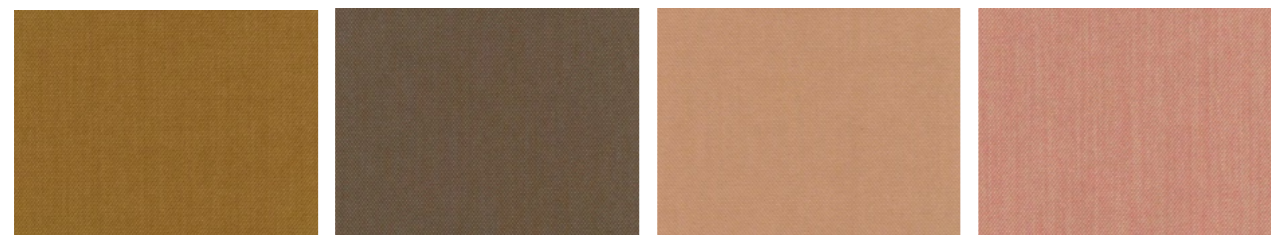


0426

0436

0446

0453

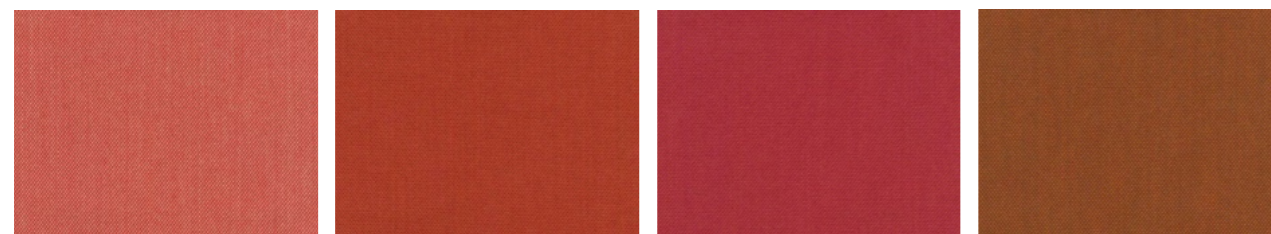


0466

0476

0506

0515



0526

0533

0553

0576



0616

0636

0645

0666

STEELCUT TRIO, KVADRAT

PRICE GROUP 2B

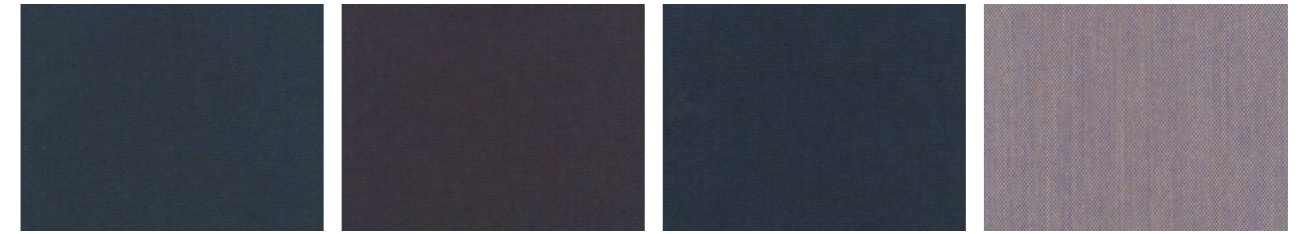


0686

0713

0716

0746

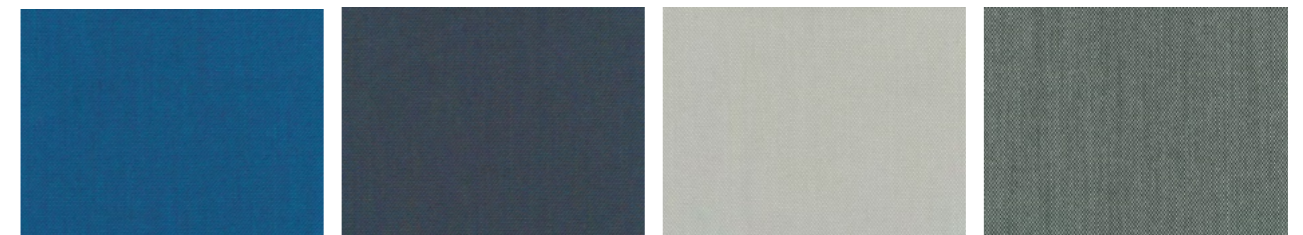


0756

0776

0796

0806

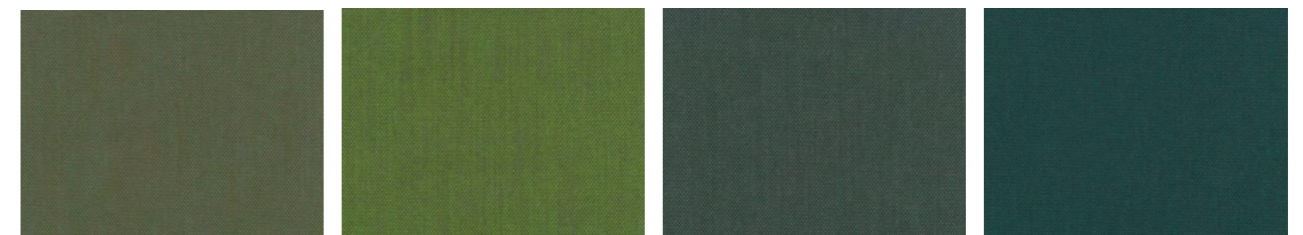


0865

0883

0906

0916

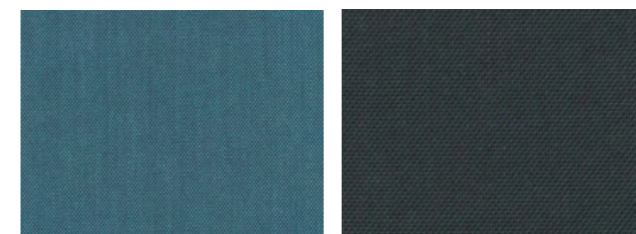


0946

0953

0966

0976



0983

0996

# VIDAR 4

TIGHTLY WOVEN FABRIC WITH A GENTLE SATIN SURFACE



**COMPOSITION**  
94% NEW WOOL (WORSTED), 6% NYLON

**MARTINDALE**  
100.000

**PILLING**  
4 (ISO 1-5)

**CARE INSTRUCTIONS**  
☒☒☒☒Ⓟ

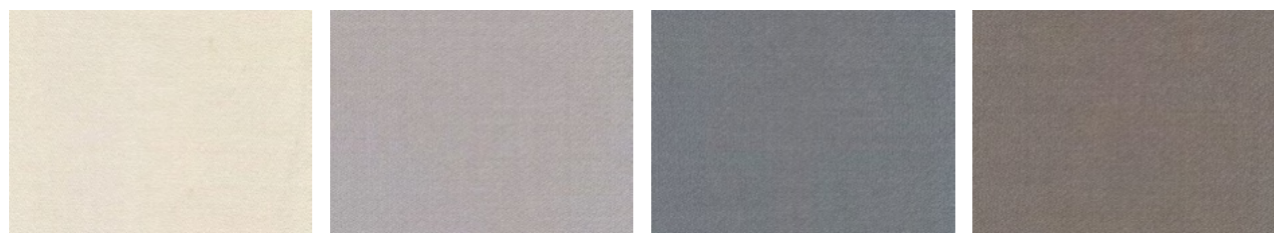
**LIGHTFASTNESS**  
7

**WIDTH AND WEIGHT**  
+/- 140 CM  
+/- 765 G/M

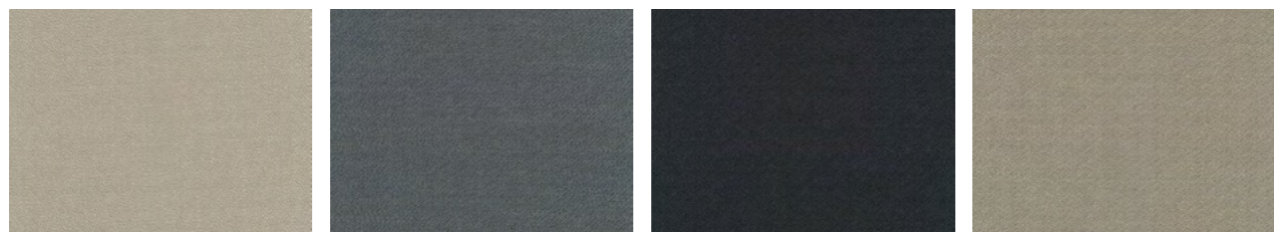
**SUSTAINABILITY**  
EU ECOLABEL, GREENGUARD GOLD,  
EPD, HPD

**MANUFACTURED IN**  
NORWAY

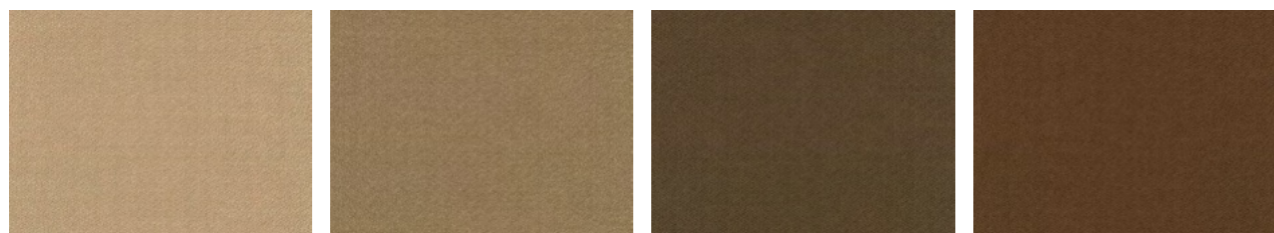
**DESIGNER**  
FANNY ARONSEN / RAF SIMONS



0106 0123 0133 0143



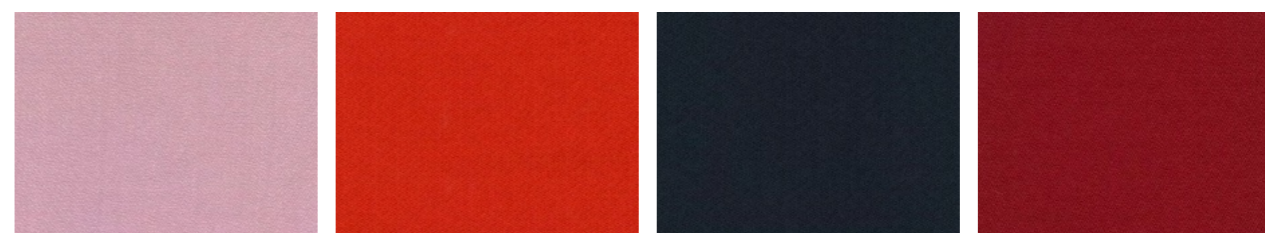
0146 0152 0182 0222



0323 0333 0353 0363



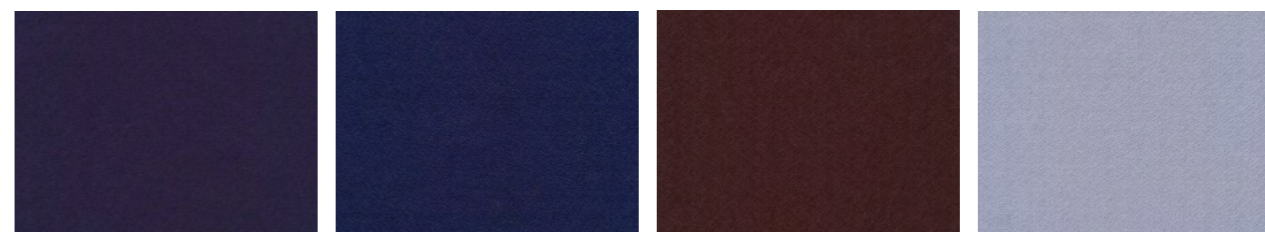
0386 0443 0456 0472



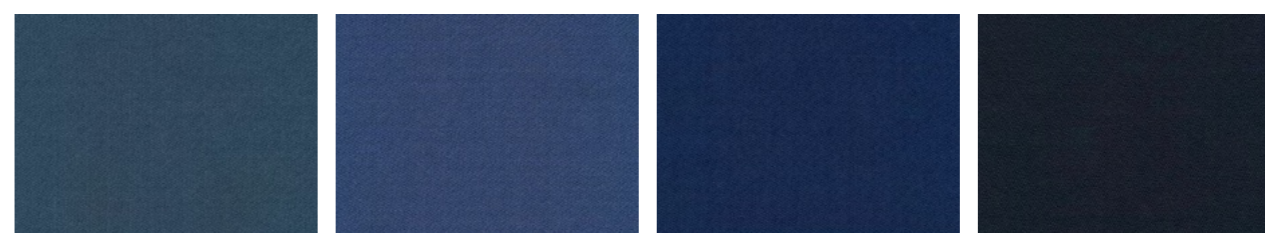
0526 0542 0554 0556



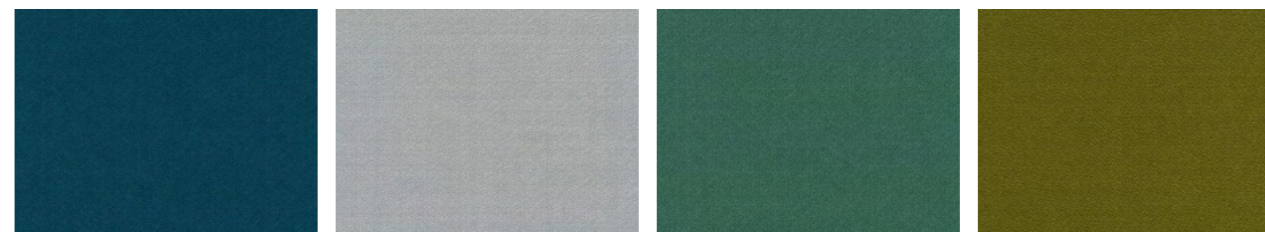
0582 0622 0633 0653



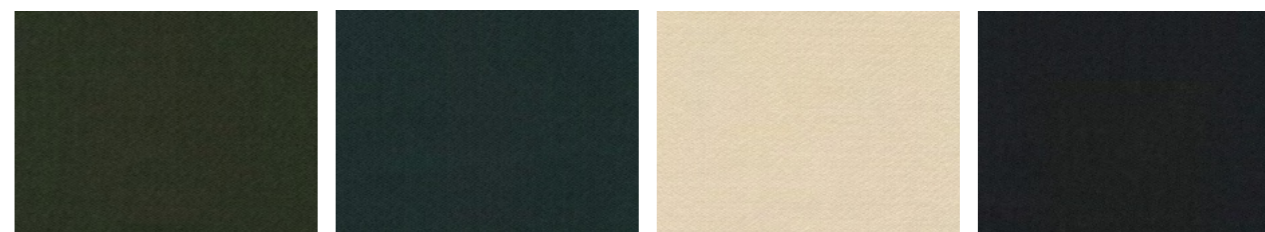
0656 0676 0693 0723



0733 0743 0772 0786



0872 0913 0943 0956



0972 1062 1511 1880

# BARNUM

RETRO-INSPIRED BOUCLÉ



**COMPOSITION**

94% COTTON, 15% WOOL, 13% ACRYLIC,  
19% VISCOSE, 8% NYLON

**MARTINDALE**

60.000

**PILLING**

4 (ISO 1-5)

**CARE INSTRUCTIONS**



**LIGHTFASTNESS**

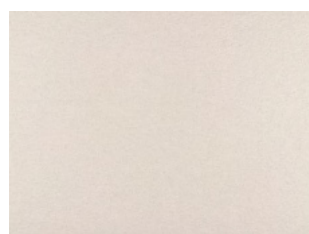
5

**WEIGHT**

+/- 680 G/M

**SUSTAINABILITY**

OEKO-TEX 21CX00014



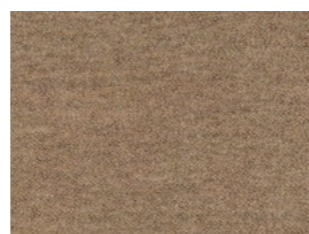
1 OFF WHITE



2 SAND



3 HEMP



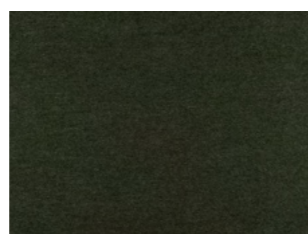
4 JUTA



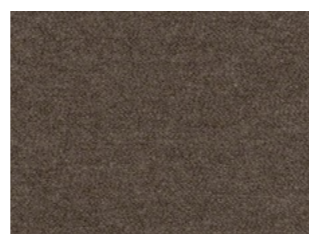
5 OCHER



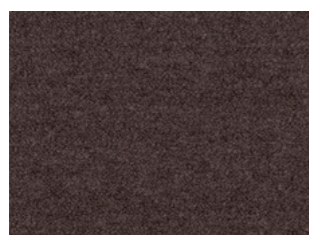
8 MEDIUM GREY



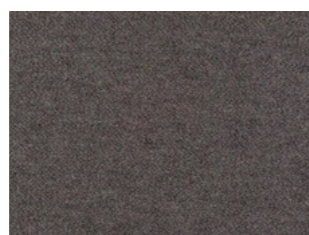
9 PINE



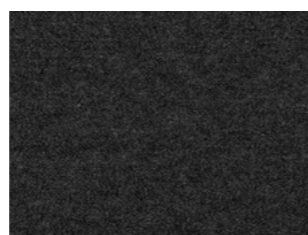
10 DARK TAUPE



11 BROWN



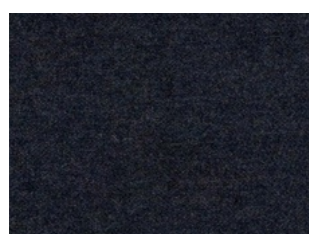
12 WARM GREY



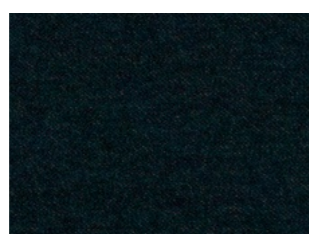
13 ANTRACIT



14 SILVER



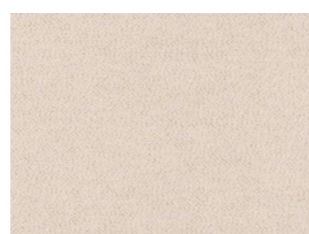
19 OCEAN



20 PETROL



23 RUST



24 LANA

# 3A

Textile price group

# HARALD 3

CLOSELY-WOVEN, SHORT-PILE VELOUR



**COMPOSITION**  
100% COTTON

**MARTINDALE**  
100.000

**PILLING**  
4-5 (ISO 1-5)

**CARE INSTRUCTIONS**  


**LIGHTFASTNESS**  
4-5

**SUSTAINABILITY**  
GREENGUARD GOLD, HPD, EPD, NATURAL FIBERS

**SEAM SLIPPAGE**  
WARP: 2,5  
WEFT: 3

**WIDTH AND WEIGHT**  
+/- 140 CM  
+/- 520 G/M

**MANUFACTURED IN**  
ITALY

**DESIGNER**  
FANNY ARONSEN




**NARA** TEXTURED, SOFT AND RICH



**COMPOSITION**  
50% LINEN, 35% COTTON, 15% VISCOSE

**MARTINDALE**  
60.000

**PILLING**  
5 (ISO 1-5)

**CARE INSTRUCTIONS**  


**LIGHTFASTNESS**  
5-6 (ISO 1-8)

**SUSTAINABILITY**  
GREENGUARD GOLD, HPD

**SEAM SLIPPAGE**  
WARP: 1, WEFT: 2

**WIDTH AND WEIGHT**  
+/- 140 CM, +/- 1.010 G/M

**MANUFACTURED IN**  
ITALY




**SISU** CHECKED, THICK, VOLUMINOUS WOOLLEN TEXTILE



**COMPOSITION**  
91% NEW NORWEGIAN WOOL, 8% NEW ZEALAND WOOL, 1% NYLON

**MARTINDALE**  
70.000

**PILLING**  
3-4 (ISO 1-5)

**CARE INSTRUCTIONS**  


**LIGHTFASTNESS**  
7 (ISO 1-8)

**SUSTAINABILITY**  
GREENGUARD GOLD, HPD, EPD

**SEAM SLIPPAGE**  
WARP: 1,5 , WEFT: 3

**WIDTH AND WEIGHT**  
+/- 142 CM, +/- 1.010 G/M

**MANUFACTURED IN**  
NORWAY

**DESIGNED BY**  
NANNA DITZEL, DAHN VO

