

USB to HDMI 1080p Adapter w/ Audio Quick Start Guide

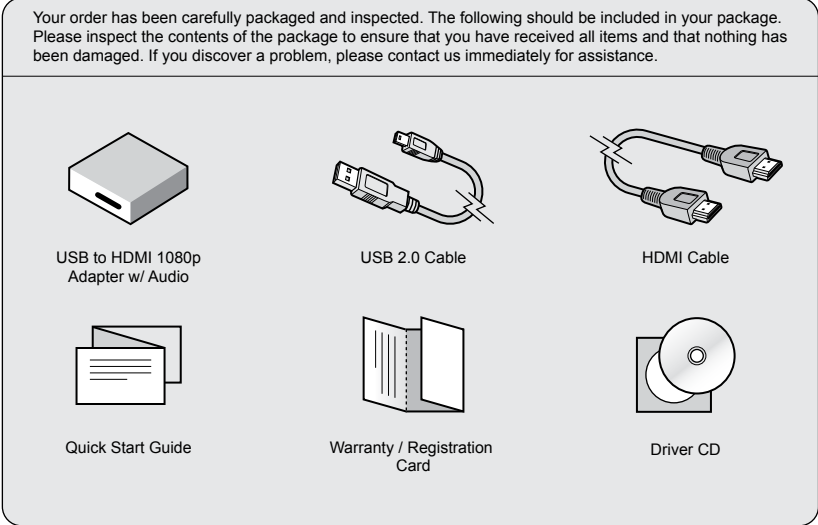


AUH200F

aluratek.com

qsg Q10192 Copyright © 2010 Aluratek, Inc. All Rights Reserved.

Package Contents

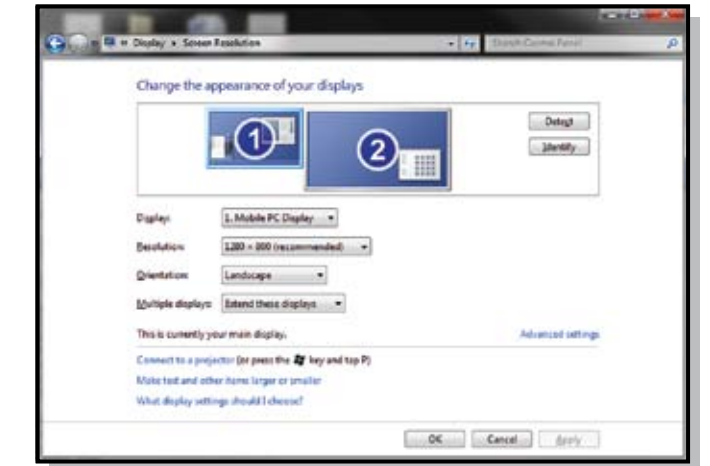


Software Installation (PC)

IMPORTANT! Please install software before connecting hardware.



Step 1: Click "I Accept". Please connect AUH200F after the software installation. You can control the display property of the adapter from the "Display Property".



Software Installation (MAC)

IMPORTANT! Please install software before connecting hardware.



Step 1: Click "DisplayLink Software Installer".



Step 2: Click "Continue".



Step 3 and 4: Click "Continue" and Click "Agree".



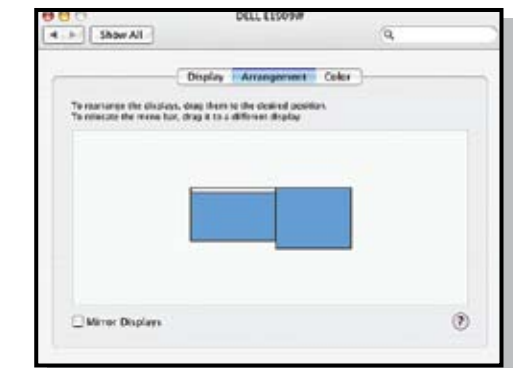
Step 5 & 6: Click "Install" and then Click "Continue Installation".



Step 7: Click "Restart".



Step 8 & 9: Connect AUH200F and Go to "Displays" in "System Preferences".

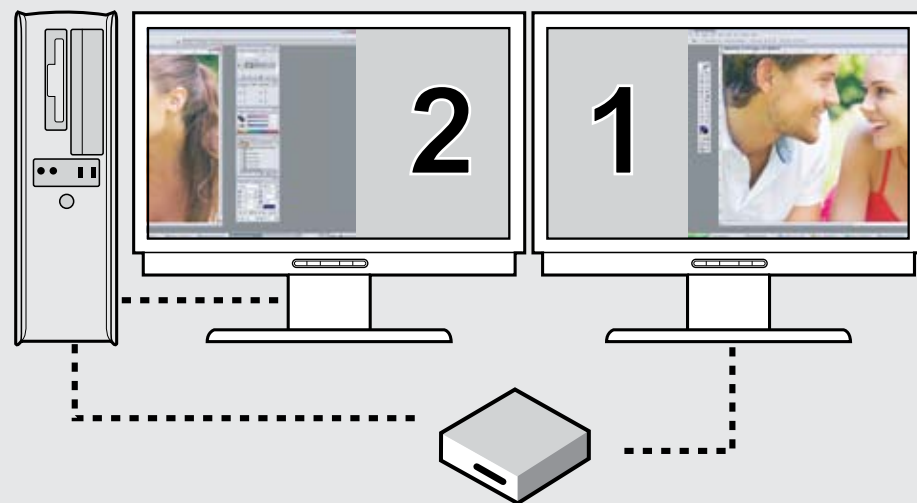


Step 10: To move the position of a display, click and hold the display you wish to move then drag it to the desired position. If your computer is connected to more than two displays you can specify that some are mirrored and others in extended mode.

Function Modes



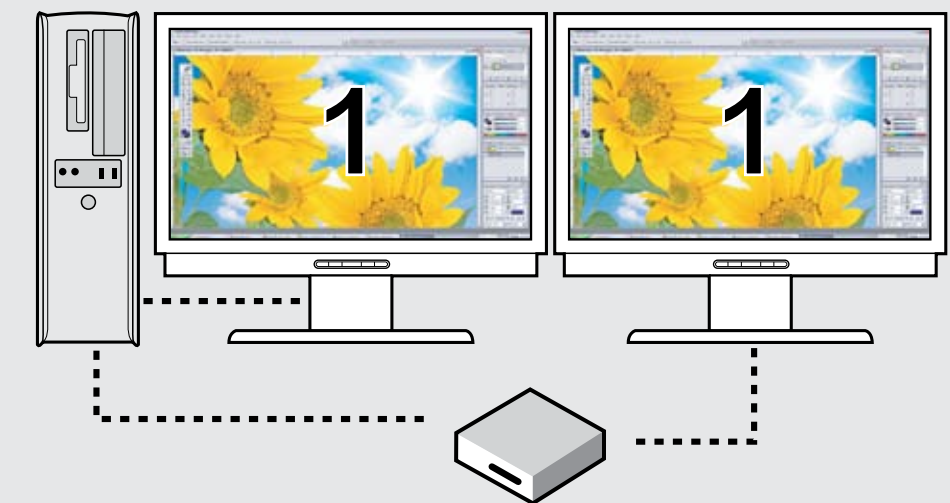
PRIMARY MODE:



EXTENDED MODE:



MIRROR MODE:



Technical Support

If you need further assistance, please contact the Aluratek support department for troubleshooting prior to returning this device.

E-mail: support@aluratek.com
 Web: www.aluratek.com/support
 Local (Tustin, CA): 714-586-8730
 Toll free: 1-866-580-1978

Radio and TV Interference Statement

WARNING!!! This equipment has been tested and found to comply with the limits of a Class B digital device, pursuant to part 15 of the FCC rules. These limits are designed to provide reasonable protection against harmful interference in a residential installation.

This equipment generates, uses and can radiate radio frequency energy and, if not installed and used in accordance with the instruction, may cause harmful interference to radio communications. However, there is no guarantee that interference will not occur in a particular installation. If this equipment does cause harmful interference to radio or television reception, which can be determined by turning the equipment off and on, the user is encouraged to try to correct the interference by whatever measures may be required to correct the interference.

Warranty

Aluratek warrants this product against defect in material or workmanship for **1 Year** from the date of purchase.

This warranty becomes invalid if the factory-supplied serial number or "warranty void" sticker has been removed or altered on the product.

This warranty does not cover:

- A) Cosmetic damage or damage due to acts of God
- B) Accident, misuse, abuse, negligence or modification of any part of the product.
- C) Damage due to improper operation or maintenance, connection to improper equipment, or attempted repair by anyone other than Aluratek.
- D) Products sold AS IS or WITH FAULTS.

IN NO EVENT SHALL ALURATEK'S LIABILITY EXCEED THE PRICE PAID FOR THE PRODUCT FROM DIRECT, INDIRECT, SPECIAL, INCIDENTAL, OR CONSEQUENTIAL DAMAGES RESULTING FROM THE USE OF THE PRODUCT, ITS ACCOMPANYING SOFTWARE, OR ITS DOCUMENTATION.

Aluratek makes no warranty or representation, expressed, implied, or statutory, with respect to its products, contents or use of this documentation and all accompanying software, and specifically disclaims its quality, performance, merchantability, or fitness for any particular purpose. Aluratek reserves the right to revise or update its product, software or documentation without obligation to notify any individual or entity.