

# 8” Digital Photo Frame

## Quick Start Guide



model ADPFD08F

aluratek.com

qsg Q10498 Copyright © 2018 Aluratek, Inc. All Rights Reserved.

## Package Contents

Your order has been carefully packaged and inspected. The following accessories should be included in your package. Please inspect the contents of the package to ensure that you have received all items and that nothing has been damaged. If you discover a problem, please contact us immediately for assistance.

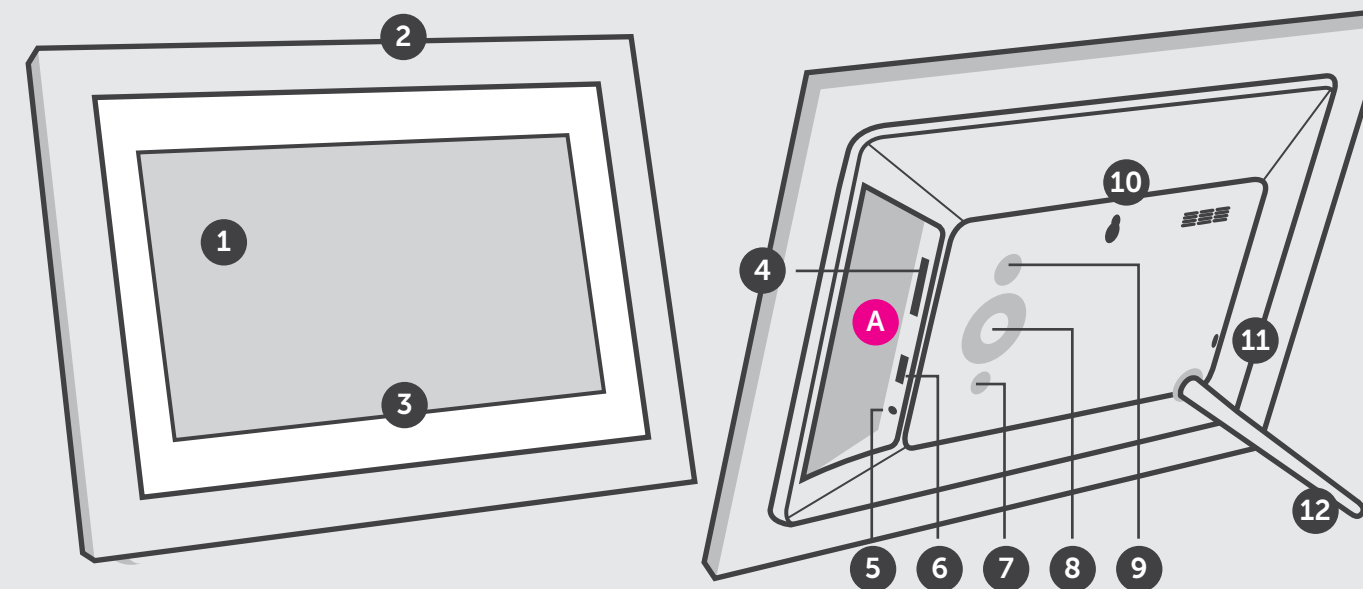


Power Adapter



Frame Stand

## Product Highlights



- |                                 |                             |
|---------------------------------|-----------------------------|
| <b>1</b> 8" LCD Screen          | <b>7</b> Menu Button        |
| <b>2</b> Wood Frame             | <b>8</b> Directional Keypad |
| <b>3</b> White Matte            | <b>9</b> Power Button       |
| <b>4</b> SD/SDHC/SDXC Card Slot | <b>10</b> Wall Mount Hole   |
| <b>5</b> Power Adapter Port     | <b>11</b> Security Lock     |
| <b>6</b> USB 2.0 Port           | <b>12</b> Frame Stand       |

**A** Connect a USB hard drive, USB flash drive or SD / SDHC / SDXC card to easily access and share your favorite pictures

## Device Operation

### Getting Started:

Plug in the power adapter to power on the photo frame.

### Viewing Photos:

- Please insert your memory card (**SD / SDHC / SDXC**) at this time.
- The frame will start slideshow automatically when the card is inserted.
- The slideshow can be stopped by pressing the “▶||” button on the frame. You can then press the “◀” or “▶” button to see the next or previous picture.

## Technical Support

If you need further assistance, please contact the Aluratek support department for troubleshooting prior to returning this device.

E-mail: [support@aluratek.com](mailto:support@aluratek.com)

Web: [www.aluratek.com/helpdesk](http://www.aluratek.com/helpdesk)

Local (Irvine, CA): 714-586-8730

Toll free: 1-866-580-1978

## Device Operation

### Photo Setup:

Press the “▶||” button to select **Setting**. Press the “▶||” button again to access the Photo Setup menu.

You will see the following options: Display Mode, Display Ratio, Slideshow Transition Time, Slideshow Repeat and Slide Transition Effect.

Use the “▲” button and the “▼” button to cursor through the menu. To make any changes to the setup option highlighted, press the “◀ or ▶” button to select the desired option. Once your selection has been made, press the “▲ or ▼” button to move on to the next menu option.

Press the **Menu** button to return to the Setup menu. Press the **Menu** button to return to the Main menu.

## Radio and TV Interference Statement

WARNING!!! This equipment has been tested and found to comply with the limits of a Class B digital device, pursuant to part 15 of the FCC rules. These limits are designed to provide reasonable protection against harmful interference in a residential installation.

This equipment generates, uses and can radiate radio frequency energy and, if not installed and used in accordance with the instruction, may cause harmful interference to radio communications. However, there is no guarantee that interference will not occur in a particular installation. If this equipment does cause harmful interference to radio or television reception, which can be determined by turning the equipment off and on, the user is encouraged to try to correct the interference by whatever measures may be required to correct the interference.

## Device Operation

### System Setup:

Press the “▶||” button to select **Setting**. Scroll to the “System Setup” and press the “▶||” button again to access the System Setup menu.

You will see the following options: Language, Backlight, Brightness, Contrast, Saturation, Auto Power On, Auto Power On Time, Auto Power Off, Auto Power Off Time and Auto Power Frequency.

Use the “▲” button and the “▼” button to cursor through the menu. To make any changes to the setup option highlighted, press the “◀ or ▶” button to select the desired option. Once your selection has been made, press the “▲ or ▼” button to move on to the next menu option.

Press the **Menu** button to return to the Setup menu. Press the **Menu** button to return to the Main menu.

## Warranty

Aluratek warrants this product against defect in material or workmanship for **1 YEAR** from the date of purchase.

This warranty becomes invalid if the factory-supplied serial number or "warranty void" sticker has been removed or altered on the product.

This warranty does not cover:

- A) Cosmetic damage or damage due to acts of God
- B) Accident, misuse, abuse, negligence or modification of any part of the product.
- C) Damage due to improper operation or maintenance, connection to improper equipment, or attempted repair by anyone other than Aluratek.
- D) Products sold AS IS or WITH FAULTS.

IN NO EVENT SHALL ALURATEK'S LIABILITY EXCEED THE PRICE PAID FOR THE PRODUCT FROM DIRECT, INDIRECT, SPECIAL, INCIDENTAL, OR CONSEQUENTIAL DAMAGES RESULTING FROM THE USE OF THE PRODUCT, IT'S ACCOMPANYING SOFTWARE, OR IT'S DOCUMENTATION.

Aluratek makes no warranty or representation, expressed, implied, or statutory, with respect to it's products, contents or use of this documentation and all accompanying software, and specifically disclaims it's quality, performance, merchantability, or fitness for any particular purpose. Aluratek reserves the right to revise or update it's product, software or documentation without obligation to notify any individual or entity.