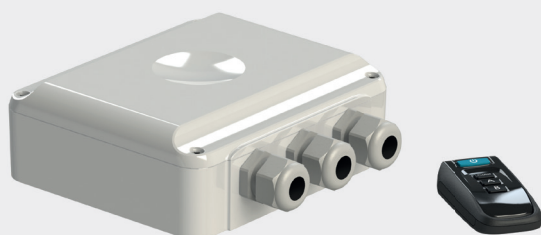


PLP-REM



PLP-REM-350



CHARACTERISTICS

- ON/OFF communication, by quickly switching on/off the DURAVISION lamp will change colour according to fixed colour programs
- PLC communication, commands will be transmitted via the power cable to operate the DURAVISION lamp
- On-board dipswitch for settings
- Including TX868 remote control
- With/without built-in transformer
- 2 relay contacts toggle or pulse mode
- RS-485 and DMX512 connectivity
- LINK Touch compatible

ADVANTAGES

- Easy installation and configuration
- Safe control for DURAVISION LED lighting
- Dimming function via PLC communication
- Control of external devices such as garden lighting or swimming pool covers via relay contacts
- Free space on DIN-RAIL (with PLP-REM-350)
- CAN bus to connect LINK Controller or LINK Cover
- Connection to home automation system via RS-485
- SD card slot for firmware updates



TECHNICAL SPECIFICATIONS

CHARACTERISTICS	UNIT	PLP-REM	PLP-REM-350
Type of control DURAVISION		ON/OFF & PLC	ON/OFF & PLC
Frequency band transmitter	MHz	868	868
LINK Touch compatible		✓	✓
Nominal input voltage	VAC	12	230
Built-in toroidal transformer		-	✓
Transformer VA rating	VA	-	350
Output voltage	VAC	12	12
Quantity AUX outputs		2	2
CAN bus		✓	✓
RS-485		✓	✓
DMX512		✓	✓
IEC protection class		Class II	Class II
IP class		IP54	IP54
Unit dimensions (L*W*H)	mm	150*130*54	420*295*140
Net weight	kg	0,43	6,9
Warranty	year	2	2

TO COMBINE WITH

LED LIGHTING	POOL COVER	EXTERNAL TRANSFORMER
VISION Spectra DVM p. 14	LINK Cover p. 92	TORO-DIN p. 98
VISION Spectra DVS p. 16		TORO-IP64 p. 98
VISION Adagio Pro p. 18		
VISION Allegro p. 20		
VISION Pro p. 22		
VISION Moonlight p. 36		