

General Instruction Sheet

Stahldas™ Wall Mounted Display Cabinet - 600mm

Displaysense

Telephone 01279 460 460

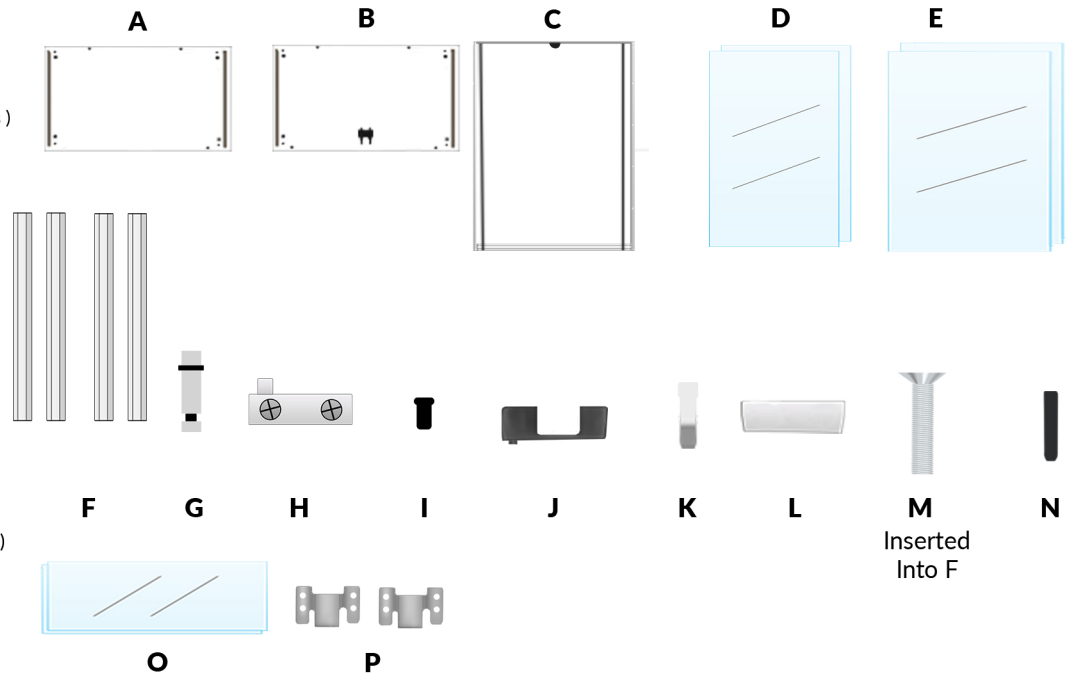
Fax 0845 200 8149

Email sales@displaysense.co.uk

Website www.displaysense.co.uk

Contents

- A** 1 x Bottom Panel
- B** 1 x Top Panel
- C** 1 x Back Panel (Has 2 x Wall Brackets)
- D** 2 x Glass Side Panels
- E** 2 x Glass Doors (600mm wide)
- F** 4 x Side Supports
- G** 8 x Shelf Supports (Pre-inserted)
- H** 4 x Door Hinges
- I** 4 x Hinge Plug
- J** 4 x Hinge Inserts
- K** 8 x White Connector Plugs
- L** 2 x Magnetic Door Lock Cover
- M** 8 x Flathead Screws (Inserted into F)
- N** 8 x Black Panel Connectors
- O** 2 x Glass Shelves
- P** 2 x Wall Brackets



Please note: 2 People are required to construct this cabinet

Tools required: 1 x Allen key *supplied with this cabinet*

1 x Philips screwdriver (For door hinges) 1 x Flat head screwdriver (For adjusting shelf supports)

If you have additional shelving, carry out Step 10 first as shelf supports (G) have to be added to the side supports (F) before assembly. Flathead Screws (M) are pre-inserted into side Supports (F) for protection to be removed during assembly

Step One:

- Lay Bottom Panel (A) down on a soft flat surface. Take 4 x White Connector Plugs (K) and place one into each of the smallest holes at the corners of the Bottom Panel (A)
- Insert 2 x Hinge Plugs (I) into the holes located on the front edge of the panel.
- Repeat this process for the Top Panel (B), once done set aside for now.

Step Two:

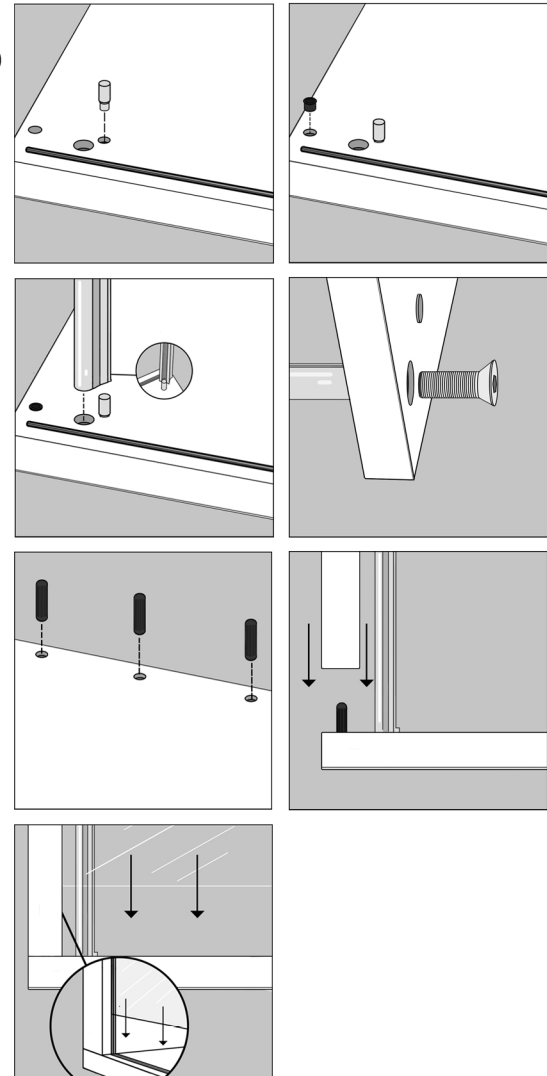
- Take 1 x Side Support (F) unscrew the Flathead screws (M) from each end.
- Push it down onto the one of the White Connector Plugs (K), Ensure the plug inserts up into the front channel. Remember to make sure that the supports are facing the correct way so that the Shelf Supports (G) which are pre inserted in the uprights are facing inwards.
- Once the support is in position, turn the Bottom Panel (A) onto its side, take 1 x FlatHead Screw (M) and insert up into the underside hole aligning with the Side Support (F) Tighten using Allen key provided. (If you are struggling to tighten, consider using a ratchet socket.)
- Repeat this process for the other three Side Supports (F)

Step Three:

- Take 4 x Black Panel Connectors (N) and insert them into the four remaining holes on the Bottom Panel (A)
- Repeat this process for the Top Panel (B), once done set aside for now.
- Next take the Back Panel (C) and insert down onto the Black Connector Plugs (N)

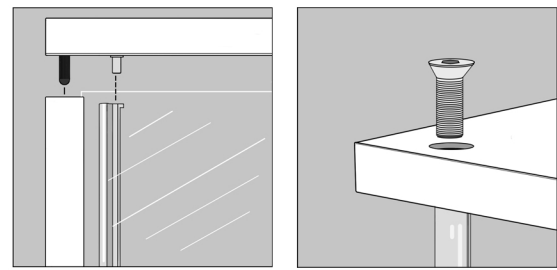
Step Four:

- Ensure the Back Panel (C) remains connected to the bottom panel (A)
- Take 1 x Glass Side Panel (D) With one person holding the Back Panel in place Lift and insert the side panel into the Back Panel (C) side groove. Once in, slide the Glass Slide Panel (D) down the back panel until it slots into the Bottom Panel groove (A)
- Repeat this process for the other Glass Side Panel (D)



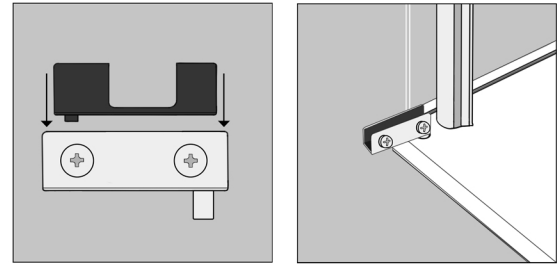
Step Five:

- Now take the Top Panel (B) with previously inserted White Connector Plugs (K) and Back Panel Connectors (N). With one person holding either side of the Top Panel (B) insert the Black Panel connectors into the holes of the Back Panel (C).
- Once inserted slowly lower the front half of the Top Panel (C) down, align the Uprights (F) with the corresponding White Connector Plugs (K) and ensure they connect.
- Ensure the two Glass Side Panels (D) insert correctly into the top panel's groove.
- Once the Top panel is connected to the rest of the cabinet, take 1 x Flathead Screw (M) and insert it down into one of the holes aligning with an upright (F) secure in place using an alum key.
- Repeat the last step for the other 3 flathead screws



Step Six:

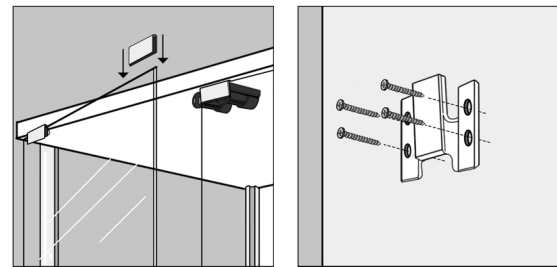
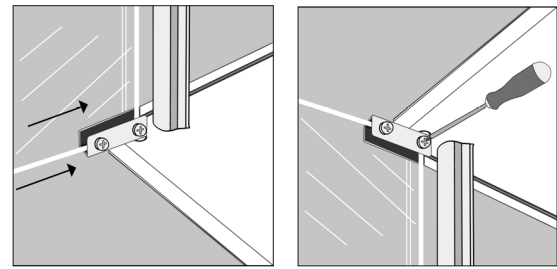
- Take 1 x Hinge Inner (J) and 1 x Door Hinge (H), insert the inner into the open side of the door hinge. Repeat this process for the remaining 3 hinges.
- Take 2 of the door hinges (H) with inners and insert them into the bottom two hinge plugs (I) added in step 1. Place the other two on top of the Top Panel (B) for now.



Note: Ensure the screws on the side of the hinges are loosened but not taken out

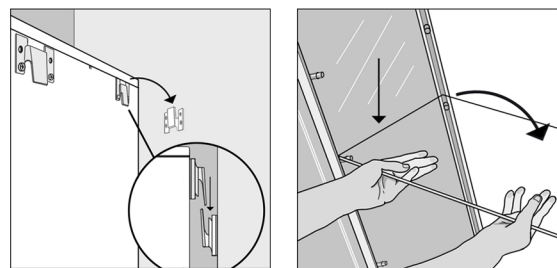
Step Seven:

- With assistance take 1 x Glass Door Panel (E). Carefully lower the panel into the Door Hinge (H), ensure that the inner edge of the panel sits just outside of the hinge.
- While holding the panel in place, take one of the Door Hinges (H) from the top panel. Insert it up into the corresponding Hinge Plug (I) in the Top Panel (B) and hold it in place.
- Slide the top edge of the Glass Door Panel (E) into the hinge plug, ensure that the inner edge of the panel sits just outside of the hinge.
- Using a Philip screwdriver, tighten the screws on the top door hinge first, then once secure, tighten the screws on the bottom door hinge.
- Take 1 x Magnetic Door Lock Cover (L) attach to the Glass Side Panel (D) on the top inner corner so when shut, the cover connects to the magnetic latch located on the underside of the Top Panel (B)
- Repeat step Eight for the remaining Glass Door Panel (E)



Step Eight:

- Screw the two loose wall brackets (P) into your wall of choice.(fixings not required) Then lifting the cabinet, align with the two pre-installed brackets found on the Back Panel (C) and slide down on the secured wall brackets (P) to mount the cabinet to the wall.
- Glass Shelving Panels (O) can now be placed into the cabinet, onto the Shelf Supports (G)
- When placing a shelf, angle the pane diagonally letting one side sit on the shelf supports before lowering the other side.



Note: Ensure that you mount the cabinet before you insert the glass shelving.

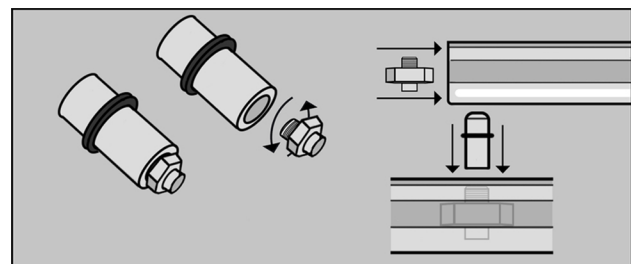
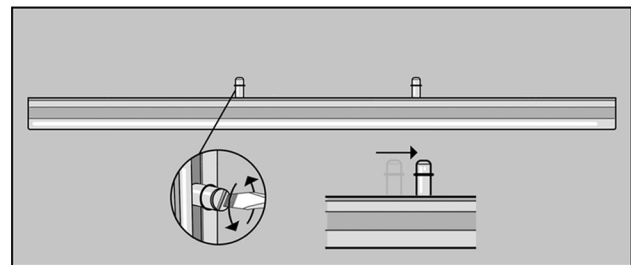
Adding Additional Shelving Supports

Ensure this is done prior to assembly. (Additional shelf supports come in packs of 3)

- Take 1 x Side Support (F) this will already have 2 sets pre- inserted of Shelf Supports (G) Using an 8mm flathead screwdriver loosen the supports which allow you to move them up and down the Side Support (F) Move them along to create space for new sets of shelves supports.

Note: These pre-inserted shelf supports are added during manufacturing and may be tightly secure in place. If necessary, use pliers to loosen the supports.

- With the Side Support (F) placed down with the inner channel facing up, take 1 x Shelf Support (G), remove the nut from it and slide it down the channel.
- Next screw the shelf support pin into the nut to connect it together and tighten it. Repeat this process for 2 other shelf supports (G)
- Repeat this process for the other 3 side supports.
- Ensure that across all four Side Supports (F) that the corresponding Shelf Supports (G) all match up so the shelves sit evenly.



If you have purchased the separate light fittings to compliment the cabinet, simply attach the light to the Top Panel of this cabinet and feed the power lead through the semi-circle hole on the Back Panel, then connect the plug to your power supply.