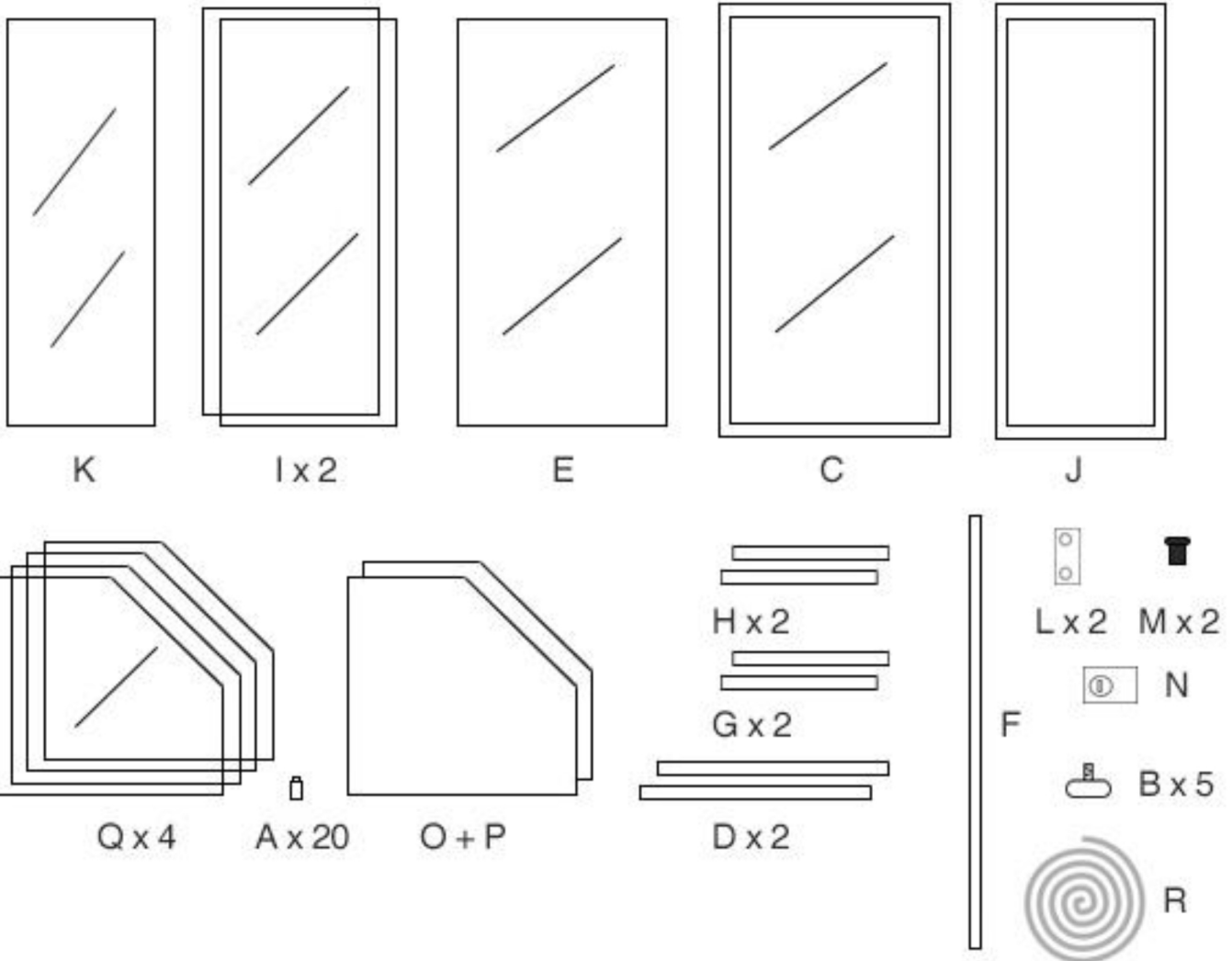


Instruction Sheet

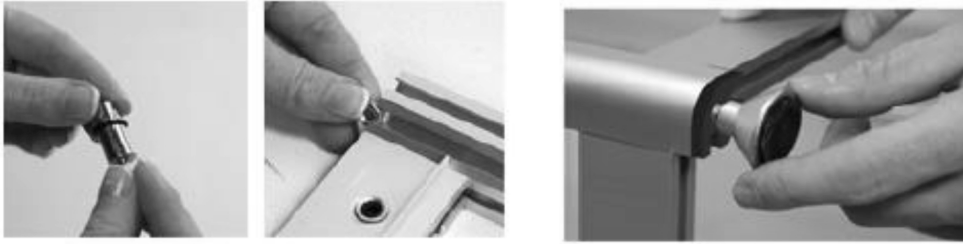
DTS650 - Silver Corner Glass Display Cabinet - 650mm



Contents:

A	20 x Self Supports	K	1 x Glass Door
B	5 x Adjustable Feet	L	2 x Door Hinges
C	1 x Assembled Back Panel	M	2 x Hinge Plugs
D	2 x Large Back Cross Bars	N	1 x Door Lock
E	1 x Glass Back Panel	O	1 x Top Panel
F	1 x Aluminium Upright	P	1 x Bottom Panel
G	2 x Cross Bars	Q	4 x Glass Shelves
H	2 x Cross Bars	R	1 x Rubber Seal
I	2 x Glass Side Panels		Allen Key supplied
J	1 x Assembled Front		Suggested Tools: Philips Screwdriver

1. Insert all shelf supports (A) into each upright using the markers for guidance by twisting in to position, then attach the adjustable feet (B) into the bottom of each upright



2. Place the back panel (C) onto a flat, soft surface and slide the two large cross bars (D) into the top and bottom corners of the panel, securing in place with the Allen key, then slide the glass back panel (E) in between the two cross bars (D)



3. Finish the back by sliding the single upright (F) onto the glass panel and cross bars (D) and secure with the Allen key

4. Next, attach the cross bars labelled G to the top and bottom of the back panel on the left side and slide the glass side panel (I) into place

5. Repeat the same for the cross bars labelled H, sliding onto the right hand back panel then slide the second glass panel into place

6. Attach the assembled front panel (J) by sliding into place

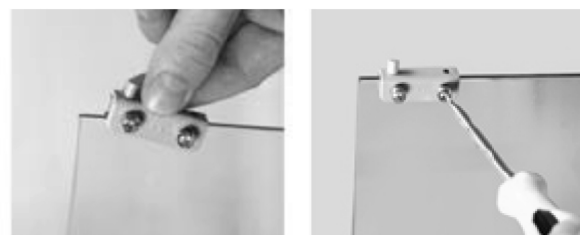


Hint: If you struggle to get the cross bars to freely slide into the front panel gradually loosen the grub screws on the cross bars and re-tighten once the panel is fitted

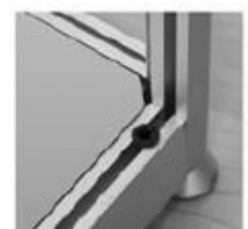
Please note: We advise that there are three people there to assist, with two people holding each side panel in place for stability while the third person positions the front panel and attaches to the cross bars

7. Once all components are screwed tightly in place, gently lift the cabinet onto its feet

8. Attach the hinges (L) to the glass door (K) by screwing into place onto the top and bottom of the glass, ensuring that each hinge is 8 - 10mm in from the inside edge of the glass



9. Insert the hinge plugs (M) into the top and bottom holes on the front bars



10. Lift the glass door into the cabinet, aligning top and bottom hinges with the corresponding hinge plugs

11. Screw the lock (N) into position using a Philips screwdriver

12. Finish the cabinet by inserting the top and bottom panels (O + P) and place the shelves (Q) onto the supports



13. Finally, add stability to the glass panels by inserting the rubber seal (R) into the channels where the glass meets the aluminium

Hint: Use display cleaner as a lubricant to help ease the rubber seal into each channel

