

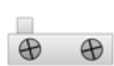
## General Instruction Sheet

### Stahldas™ Aluminium Display Cabinets - Single Door

#### Contents

- A** 1 x Back Panel (includes glass panel & shelf supports)
- B** 1 x Front Panel (complete with shelf supports)
- C** 4 x Side Supports
- D** 2 x Glass Side Panels (360mm wide)
- E** 1 x Glass Doors (340mm wide)
- F** 4 x Glass Shelves
- G** 1 x Top and Bottom Panel
- H** 2 x Door Hinge
- I** 1 x Lock & Key Pack
- J** 4 x Feet
- K** 2 x Hinge Plug
- L** 4 x Top End Caps
- M** 1 x Rubber Glass Seal
- N** 16 x Shelf Supports

**Please note:** Two people are required to construct this cabinet. 1 x Allen Key is supplied with this cabinet. 1 x Phillips Head Screwdriver is also required. This cabinets is made using toughened safety glass. Lock & Key Pack contains: 1 x Door Lock, 2 x keys, 1 x Clear Plastic Spacer and 1 x Door Stop (Please Note: the Door Stop and screws are not required for this cabinet).



**H**



**I**



**J**



**K**



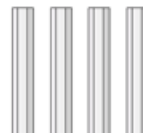
**L**



**M**



**N**



**C**



**G**



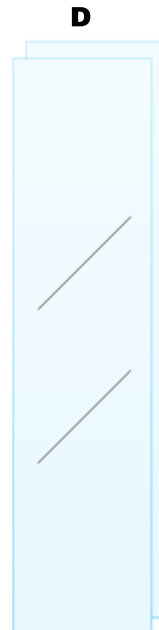
**F**



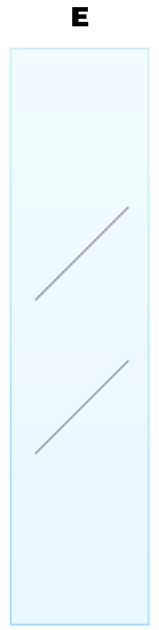
**A**



**B**



**D**

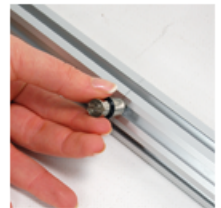


**E**

#### Step One:

Lay the Back Panel (**A**) down on a soft flat surface. Take one Shelf Support (**N**), remove the nut, slide the nut down the channel to the lowest shelf marker and screw the Shelf Support Pin into the nut. Repeat this for each Shelf Support (**N**). Now repeat this for the Front Panel (**B**).

**Hint:** There are four shelf markers on each side of the front and back panel to perfectly align your shelves.



#### Step Two:

Next slide the Side Supports (**C**) into the Back Panel (**A**) - See image. Tighten all grub screws with the supplied Allen Key whilst aligning all inner ledges. Repeat for each corner.

**Hint:** If you struggle to get the Side supports to freely slide onto the Back Panel gradually loosen the black grub screws on the Side Supports.



#### Step Three:

Lift the Side Glass Panels (**D**) into the Side Supports (**C**). Slide the Front Panel (**B**) into the Bottom Side Supports (**C**) and slide over the Glass and into the Top Support (**C**). Tighten both grub screws on the Side Supports. Repeat for the other side.

**Hint:** Please ensure that on the glass the word 'tempered' is facing the correct way. If the Front Panel fails to slide freely, loosen the black grub screws on both Side Supports.



### Step Four:

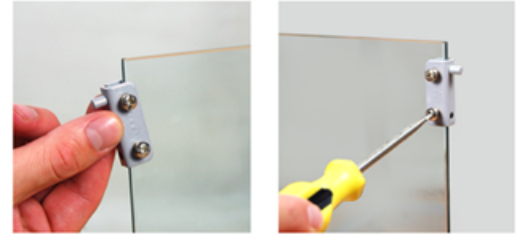
Attach all four Feet (**J**) to the bottom of the cabinet. Next lift the display cabinet upright.

**Hint:** If the cabinet is unsteady when upright adjust each foot until the cabinet stands steady.



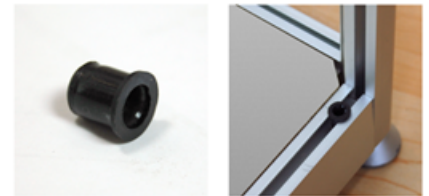
### Step Five:

Next attach the Door Hinges (**H**) to the top and bottom corner of the Glass Door (**E**) - ensuring that each hinge is 8 - 10mm in from the inside edge of the Glass Door and adjust to fit.



### Step Six:

On the front of the cabinet place two Hinge Plugs (**K**) into the bottom holes in the Front Panel (**B**).



### Step Seven:

Slightly loosen the Top Front Bar until loose enough and lift upwards. Now lift your first Glass Door (**E**) into the cabinet, aligning both top and bottom Hinges (**H**) with the corresponding Hinge Plugs (**K**). With the Glass Door in position, lower the Top Front Bar onto the door and tighten.



### Step Eight:

With the cabinet now upright lift the Top Panel (**G**) over the cabinet and slot into position. Next lift the Bottom Panel (**G**) into the cabinet and lower into position.

Now lift each Glass Shelf (**F**) into position.

**Hint:** Both Top and Bottom Panel rest on the inner ledges of each support. To change the vertical position of each shelf you can unscrew the shelf supports to slide upwards or downwards.



### Step Nine:

Open the Glass Door (**D**) and screw the Door Lock (**I**) into position on the middle of the door - See image.

**Hint:** To protect the Glass Doors within the lock, insert the supplied clear plastic spacer between the screws and glass door.



### Step Ten:

To secure both Glass Side Panels (**D**) insert the Rubber Glass Seal (**M**) into the channels where the glass meets the aluminium frame.

**Hint:** Use our Display Cleaner as a lubricant to help ease the Rubber Glas Seal into each channel

