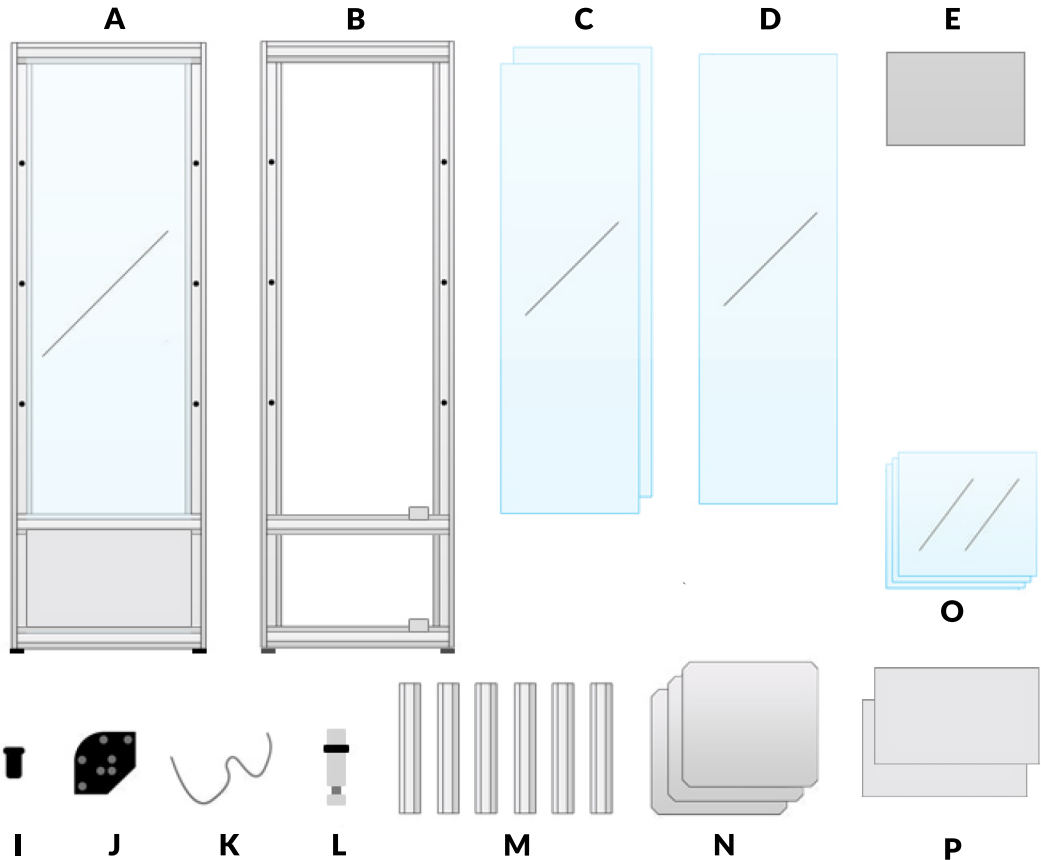


General Instruction Sheet

Stahldas™ Aluminium Display Cabinets with Storage

Contents

- A** 1 x Back Panel (includes glass & MDF panel)
- B** 1 x Front Panel
- C** 2 x Glass Side Panels
- D** 1 x Glass Door
- E** 1 x MDF Door
- F** 4 x Door Hinges
- G** 2 x Lock and Key Packs
- H** 4 x Feet
- I** 4 x Hinge Plugs
- J** 4 x Top End Caps
- K** 1 x Rubber Glass Seal
- L** 12 x Shelf Supports
- M** 6 x side supports
- N** 1 x Top, Middle and Bottom Panels
- O** 3 x Glass Shelves
- P** 2 x MDF Side Panels



Please note: Two people are required to construct this cabinet. Phillips Head Screwdriver is also required. 1 x Allen Key is supplied with this cabinet. This cabinets is made using toughened safety glass. Lock & Key Pack contains: 1 x Door Lock, 2 x keys, 1 x Clear Plastic Spacer and 1 x Door Stop

Step One:

First lay the Back Panel (A) down on a soft flat surface. Start by sliding 1 Side Support (M) into the Back Panel (A) - starting from the top. Repeat for the storage compartment. Tighten the grub screw with the supplied Allen Key whilst aligning with all inner ledges. Repeat for the other side - 2 x bottom and 2 inline with storage compartment



Step Two:

Take one Shelf Support (L), remove the nut, slide the nut down the channel to the lowest shelf marker and screw the Shelf Support Pin into the nut. Repeat this for every marker on the shelf support.



Step Three:

Next slide the remaining Side Supports (M) into the Back Panel (A) and tighten all grub screws with the supplied Allen Key whilst aligning all inner ledges.



Step Four:

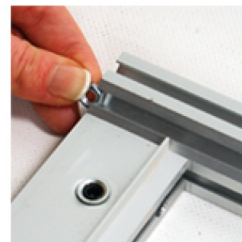
Lift the Side Glass Panels (C) into the Side Supports (M). Then lift 1 MDF Side Panel (P) into the Side Supports (M) Slide the Front Panel (B) into the Bottom Side Supports (M) and slide over the Side Panels and into the Top Support (M). Tighten both grub screws on the Side Supports. Repeat for the other side.

Hint: Please ensure that on the glass the word 'tempered' is facing the correct way. If the Front Panel fails to slide freely, loosen the black grub screws on both Side Supports



Step Five:

Now take one of the remaining 6 Shelf Supports (L), remove the nut, slide the nut down the channel on the Front Panel (B) to the lowest shelf marker.



Step Six:

Using the provided allen key move the Shelf Support Nuts so that they are inline with each shelf marker. Now screw each Shelf Support (L) onto each nut.



Step Seven:

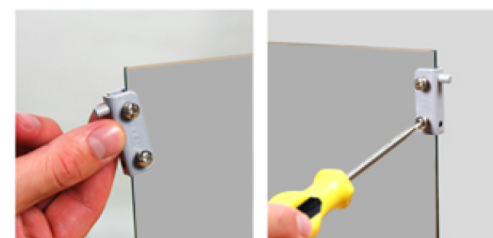
Attach all four Feet (H) to the bottom of the cabinet. Next lift the display cabinet upright.

Hint: If the cabinet is unsteady when upright adjust each foot until the cabinet stands steady



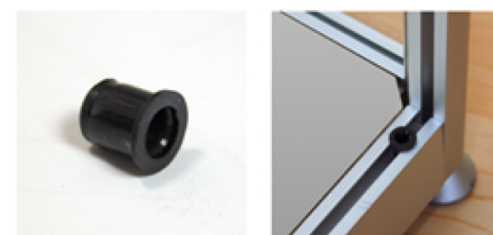
Step Eight:

Next attach the Door Hinges (F) to the top and bottom corner of the MDF Door (E) -ensuring that each hinge is 8 - 10mm in from the inside edge of the MDF Door and adjust to fit.



Step Nine:

On the front of the cabinet place two Hinge Plugs (I) into the bottom holes in the Front Panel (B).



Step Ten:

Slightly loosen the Middle Front Bar until loose enough and lift upwards. Now lift your the MDF Door (E) into the cabinet, aligning both top and bottom Hinges (F) with the corresponding Hinge Plugs (I).

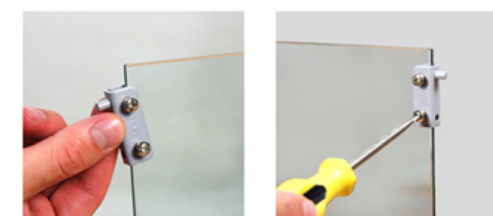


With the MDF Door (E) in position, lower the Middle Front Bar onto the MDF Door and tighten.



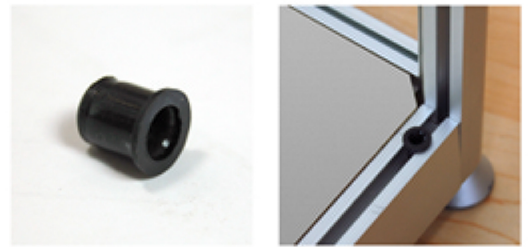
Step Eleven:

Next attach the remaining Door Hinges (F) to the top and bottom corner of the Glass Door (D) - ensuring that each hinge is 8 - 10mm in from the inside edge of the Glass Door & adjust to fit.



Step Twelve:

On the front of the cabinet place two Hinge Plugs (I) into the bottom holes in the Front Panel (B).



Step Thirteen:

Slightly loosen the Top Front Bar until loose enough and lift upwards. Now lift your first Glass Door (D) into the cabinet, aligning both top and bottom Hinges (F) with the corresponding Hinge Plugs (I). With the Glass Door (D) in position, lower the Top Front Bar onto the Glass Door and tighten.



Step Fourteen:

With the cabinet now upright lift 1 MDF Panel (N) over the cabinet and slot into position and repeat this for the Middle Panel (N). Next lift the Bottom Panel (N) into the cabinet and lower into position. Now lift each Glass Shelf (O) into position.

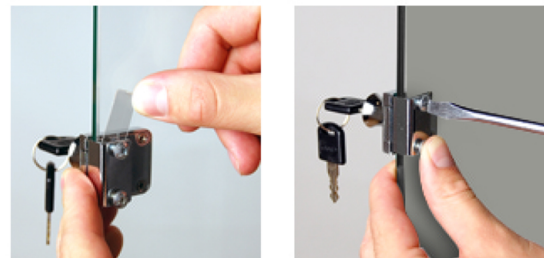


Hint: Both Top and Bottom Panel rest on the inner ledges of each support. To change the vertical position of each shelf you can unscrew the shelf supports to slide upwards or downwards

Step Fifteenth:

Open the Glass Door (D) and screw the Door Lock (G) into position on the middle of the door - See image. Repeat this step for the MDF Door (E)

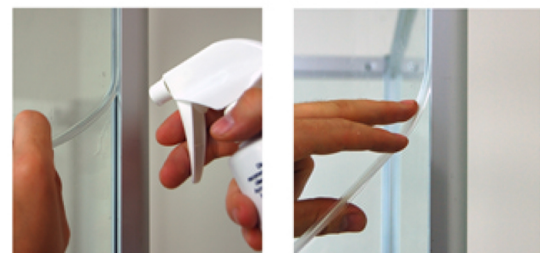
Hint: To protect the finish of your Doors within the lock, insert the supplied clear plastic spacer between the screws and glass door.



Step Sixteen:

To secure both Glass Side Panels (C) insert the Rubber Glass Seal (K) into the channels where the glass meets the aluminum frame.

Hint: Use our Display Cleaner as a lubricant to help ease the Rubber Glass Seal into each channel



Lighting can be fitted to this cabinet - please see displaysense.co.uk for further details