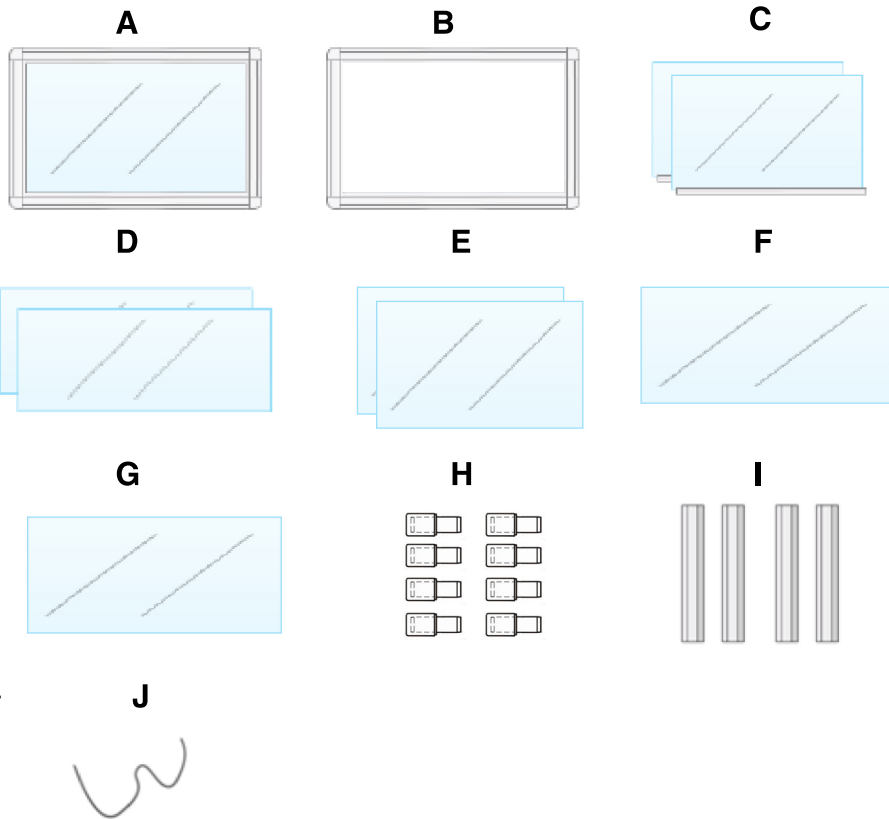


General Instruction Sheet

Stahldas™ Glass Countertop Display Case

Contents

- A** 1 x Glass Back Panel
- B** 1 x Aluminium Front Panel
- C** 2 x Sliding Glass Doors
- D** 2 x Glass Side Panels
- E** 2 x Glass Shelves
- F** 1 x Glass Top Panel
- G** 1 x Glass Bottom Panel
- H** 8 x Shelf Supports
- I** 4 x Aluminium Side Bars
- J** 1 x Rubber Seal



Please note:

1 x Allen Key is supplied with this Display Case

1 x Phillips Head Screwdriver is also required

This Display Case is made using toughened glass.

Step One

Lay the Back Panel (**A**) down on a soft flat surface. Next slide the Side Bars (**I**) into each corner of the Back Panel (**A**). - See image. Tighten all grub screws with the supplied Allen Key whilst aligning all inner ledges.



Step Two

Next slide the Glass Side Panels (**D**), the Top (**F**) and the Bottom (**G**) Glass Panels onto the Side Bars (**I**)



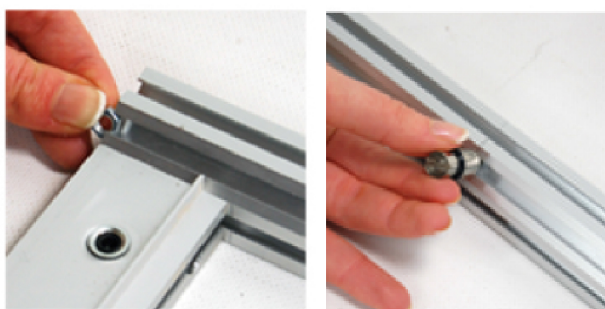
Step Three

Lower the front aluminium panel (**B**) down onto the Side Bars (**I**) and gently push down to ensure it sits flush. Then tighten the grub screws on the four corners.



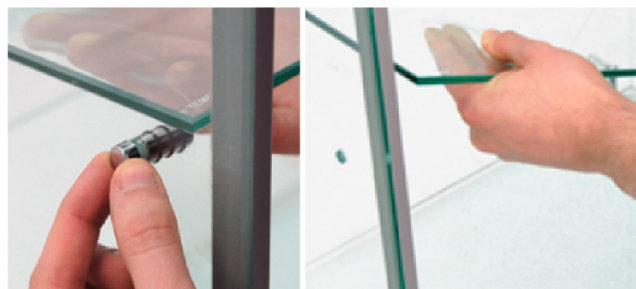
Step Four

Gently tip the Cabinet upright, so that the open side is facing you. Using the allen key move the Shelf Support Nuts so that they are inline with the shelf marker. Now screw each Shelf Support (H) onto each nut.



Step Five

Slide in the Top and Bottom Glass Shelves (E) on to the Shelf Supports (H)



Step Six

Lift each Glass Door (C) on to the runner on the Aluminium Front Panel (B)

Hint: The lock is located at the bottom of the door. To lock the cabinet insert the key and push inwards. To unlock the cabinet simply insert the key & twist clockwise.



Step Seven

To secure insert the Rubber Glass Seal (J) into the channels where the glass meets the aluminium frame.

Hint: Use our Display Cleaner as a lubricant to help ease the Rubber Glass Seal into each channel.

