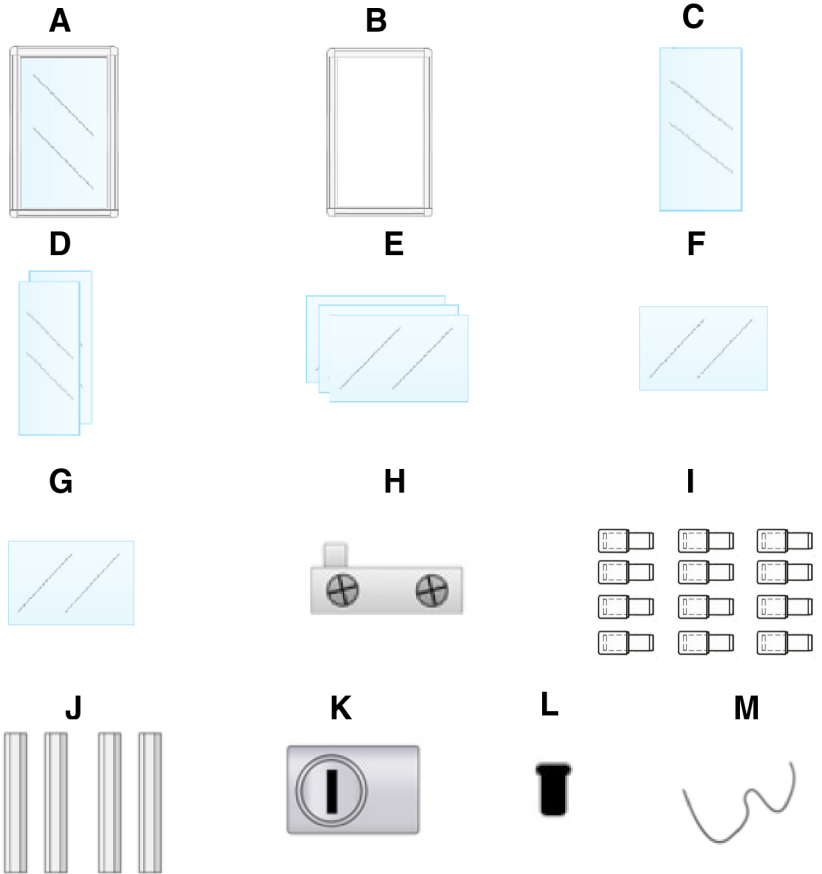


General Instruction Sheet

Stahldas™ Glass Countertop Tower Display Case

Contents

- A** 1 x Glass Back Panel
- B** 1 x Aluminium Front Panel
- C** 1 x Glass Door
- D** 2 x Glass Side Panels
- E** 3 x Glass Shelves
- F** 1 x Glass Top Panel
- G** 1 x Glass Bottom Panel
- H** 2 x Door Hinges
- I** 12 x Shelf Supports
- J** 4 x Aluminium Side Bars
- K** 1 x Door Lock
- L** 2 x Hinge Plugs
- M** 1 x Rubber Seal



Please note:

1 x Allen Key is supplied with this Display Case
 1 x Phillips Head Screwdriver is also required

This Display Case is made using toughened glass.

Step One

Lay the Back Panel (**A**) down on a soft flat surface. Next slide the Side Bars (**I**) into each corner of the Back Panel (**A**). - See image. Tighten all grub screws with the supplied Allen Key whilst aligning all inner ledges.



Step Two

Next slide the Glass Side Panels (**D**) and the Top (**F**) and Bottom (**G**) Glass Panels onto the Side Bars (**I**)



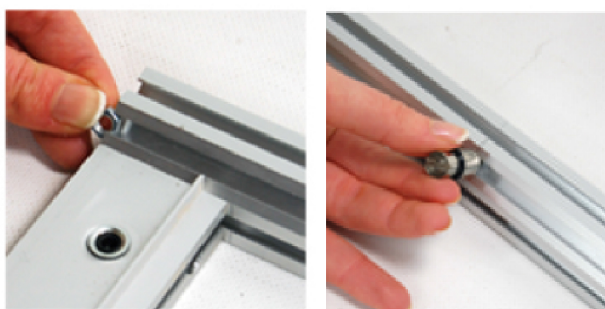
Step Three

Lower the front aluminium panel (**B**) down onto the Side Bars (**I**) and gently push down to ensure it sits flush. Then tighten the grub screws on the four corners.



Step Four

Gently tip the Cabinet upright, so that the open side is facing you. Using the allen key move the Shelf Support Nuts so that they are inline with the shelf marker. Now screw each Shelf Support (J) onto each nut.



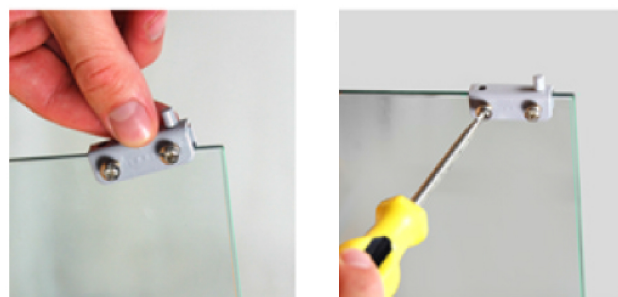
Step Five

Slide in the Glass Shelves (E) on to the Shelf Supports (J)



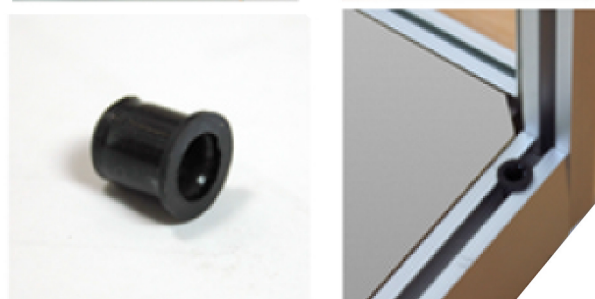
Step Six

Attach the Door Hinges (H) to the top and bottom corner of the Glass Door (C) - ensuring that each hinger is 8 - 10mm in from the inside edge of the Glass Door & Adjust to fit.



Step Seven

On the front of the cabinet place two Hinge Plugs (L) into the top and bottom holes in the front panel.



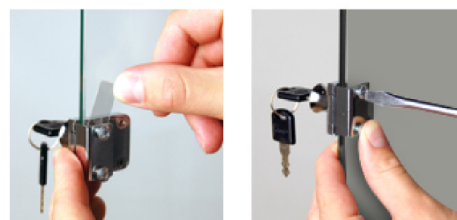
Step Eight

Lift the Glass Door (C) into the cabinet, aligning top and bottom Hinges (H) with the corresponding Hinge Plugs (L).



Step Nine

Open the Glass Door (C) and screw the Door Lock (K) into position on the bottom of the door - see image.



Step Ten

To secure the Glass Panels insert the Rubber Glass Seal into the channels where the glass meets the aluminium frame.

Hint: Use our Display Cleaner as a lubricant to help ease the Rubber Glass Seal into each channel.

