

HARVIA

Harvia Wood-Burning Heater Installation & Owner's Manual



HARVIA

Read this entire manual through to the end before proceeding with the assembly.

The following instructions explain how to install a wood-burning heater in a barrel sauna. The instructions apply to various barrel sauna diameters and sizes, and while some of the images may not appear to exactly match your own sauna, the process is the same.

At least a day prior to installing your heater you should burn wood in the heater prior to installation. Do not use the chimney but simply keep the stove away from flammable material and let it get hot to burn off some of the residue within the stove.

Installation of a wood-burning heater kit will involve measuring, cutting and fitting of certain components. The installer should be qualified in these areas to properly install the heater.

The heater kit is manufactured for a global market and, as such, not all components will necessarily be used for your installation. Use the components referenced in this instruction sheet only.

Tools needed:

- Tape measure
- String
- Pencil
- Jig saw
- Drill with 1/2" bit
- Level
- Cordless driver with torque bit and Phillips bit

WARNING! Do not place anything combustible close to heater, above the heater, and on both sides of the heater. This includes but not limited to towels, lights, robe hooks, accessories, etc. Nothing should be on the same wall as your heater that is combustible.



Parts List



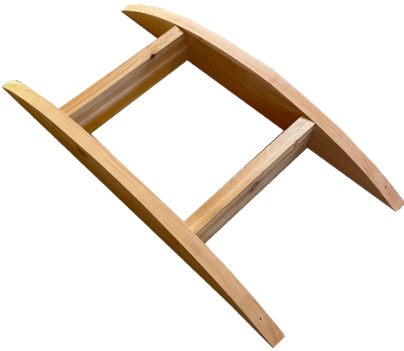
Heater Base



Heater



Adaptor Pipe



Ceiling Frame



Chimney



Chimney Extension or Water Tank



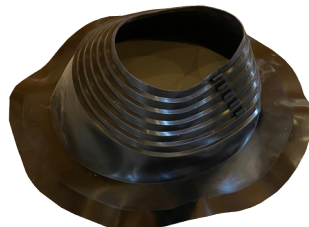
The chimney extension and water tank are not included in the kit however they can be purchased separately if desired



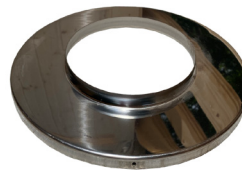
Insulation Ring



Insulation Cover



Chimney Boot



Chimney Ring



Chimney Cap





1. Place the flat wood floor section approximately 4" from rear wall and be sure it is centered between the benches. NOTE: It is not necessary to anchor it in place.

Please note: Flat wood floor is not included in this kit but may be purchased separately if desired.



2. Place the heater "bedding" on the flat wood floor section, ensuring that it is centered on the flat floor.

Heater bedding can be placed on bottom of barrel floor and does not need to be on a flat floor section. This is optional and can be purchased separately if desired.



3. After pre-burning the heater outside the sauna, placing it evenly between the benches and 6" from the rear wall.



4. Place the adaptor pipe on the stove chimney outlet located on the top of the stove. NOTE: remove the cover from the outlet and then place it on the rear heater outlet. You may need to remove a metal covering secured by a single screw to access the rear outlet.





5. Using a string with slight weight located over the center of the adaptor pipe, find the center point at the ceiling of the sauna and place a mark. Drill a 1/2" hole at this point all the way through the ceiling of the sauna.



6. Cut out the template using the 1:25 oval circle. Position the template on the top of the sauna, putting the center point directly over the hole you drilled and squaring the template with the sauna. The long portion of the oval should be directed to the sides of the sauna, not the front and rear. Using a jig saw, cut a hole in the sauna following the edge of the template. NOTE: Place a blanket or similar over the sauna heater to catch the debris that falls as you cut.



7. Place the wood ceiling frame over the heater prior to inserting either the chimney or water tank, depending on your configuration. These instructions will assume a water tank is used. If you do not have a water tank then your chimney will include a short extension. Attach the short section to the chimney to lengthen it and place chimney directly over the adaptor.
(chimney only configuration shown.)



8. Place the water tank securely over the adaptor pipe on the stove as shown.
(Water tank configuration shown for following steps.)
Water tank is not included in this kit but may be purchased separately if desired





9. Next place the chimney over the water tank. NOTE: The open end of the chimney with insulation showing will point up.



10. Connect the two pieces of insulation using the included bands and lower over the chimney from the top.



11. Position the insulation ring through the hole in the sauna as shown.



12. Lift the wood frame up and screw into the ceiling as shown.



13. Attach the stainless cover plates to the frame to conceal the insulation ring with included screws as shown.





14. Slip the boot down over the chimney from the outside as shown.



15. Apply a bead of silicone to the underside of the boot lip.



16. Screw the boot to the roof with included screws as shown.



17. Secure the clamp around the boot so it is tight to the chimney.



18. Place the chimney cover in place over the exposed insulation of the chimney and then attach the chimney cap.



19. The finished installation with a water tank from the interior of the sauna.

The water tank and floor kit are not included in this kit. These can be purchased separately if desired.

HARVIA

www.salussaunas.com