

# KIP Series - B and W Element Replacement

The steps provided will show how to change out the heating element (s) on the KIP B and W series heaters.

## **\*SAFETY INSTRUCTIONS\***

**\*Make sure the Electrical Breaker powering the heater is turned off before removing bottom cover and accessing the electrical components\***

**Instructions are page/image referenced from the KIP Heater Manual that came with the heater.**

**If you do not have a paper copy:**

---

## Replacement

1. Unmount the temperature sensor probe/wiring from the wall. [Page 6 in the KIP Manual](#)
2. Remove the Stone Guard: Page 3/Images 9 & 10. Then remove all sauna stones from within the heater. This will allow easy access for changing out element (s)
3. Remove the heater from the wall. Remove the lag bolts on the back that secures it to the wall.
4. Flip the heater on it's back to access the bottom cover. Page 4/Image 12. Remove the two cover screws.

You are now able to access the elements, unwire, disassemble, and change out.

**Refer to the following steps/images below to remove, and replace the element (s)**

**Image 1 shows the two element wires, set screw, element terminals, and element plate.**

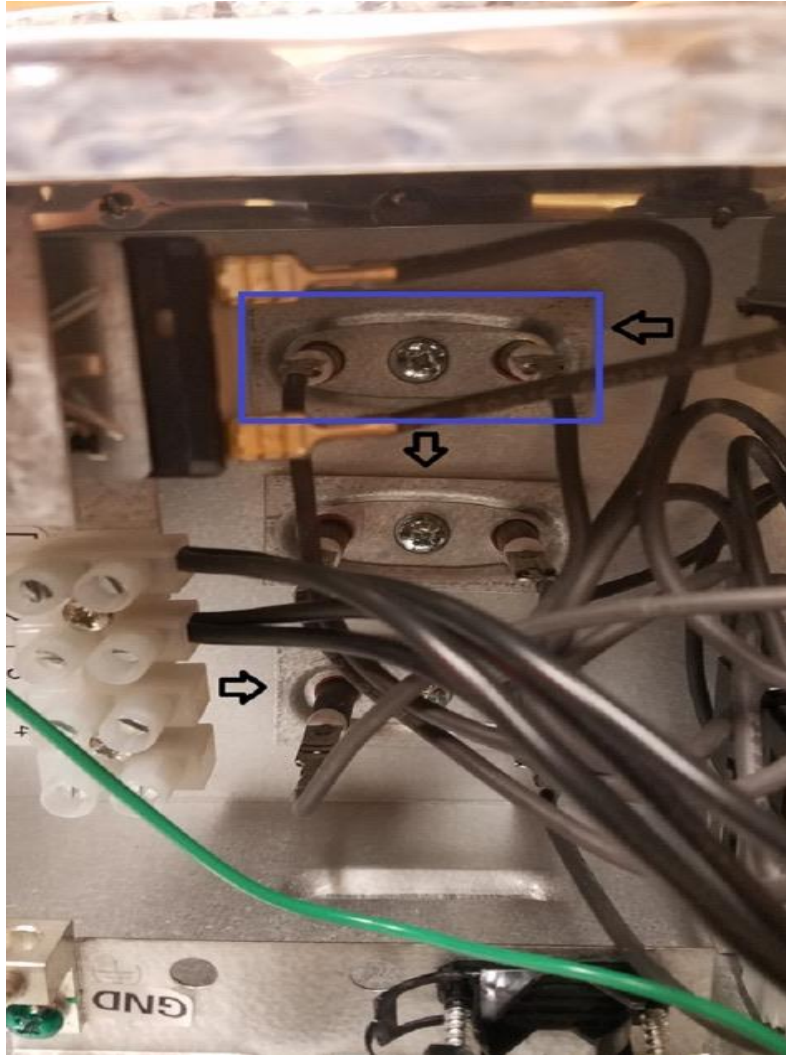
**\*Note\* The element plate reinstalls with the indentation in, facing towards the heater bottom. You should have a slight gap between it and the bottom of the heater when reinstalling.**

**Two silicone washers (Image 3) set in between it and the bottom of the heater. Each one slides onto the terminal end of the element.**

**The washers make a water tight seal to prevent water leakage into the bottom of the heater.**

**It is very important to re-install these back.**

**IMAGE 1**



Remove the wires off of the terminals. You can label each one accordingly as to placement when re-wiring after element swap (Helpful Tip) when replacing more than one element (**IMAGE 2 below**)

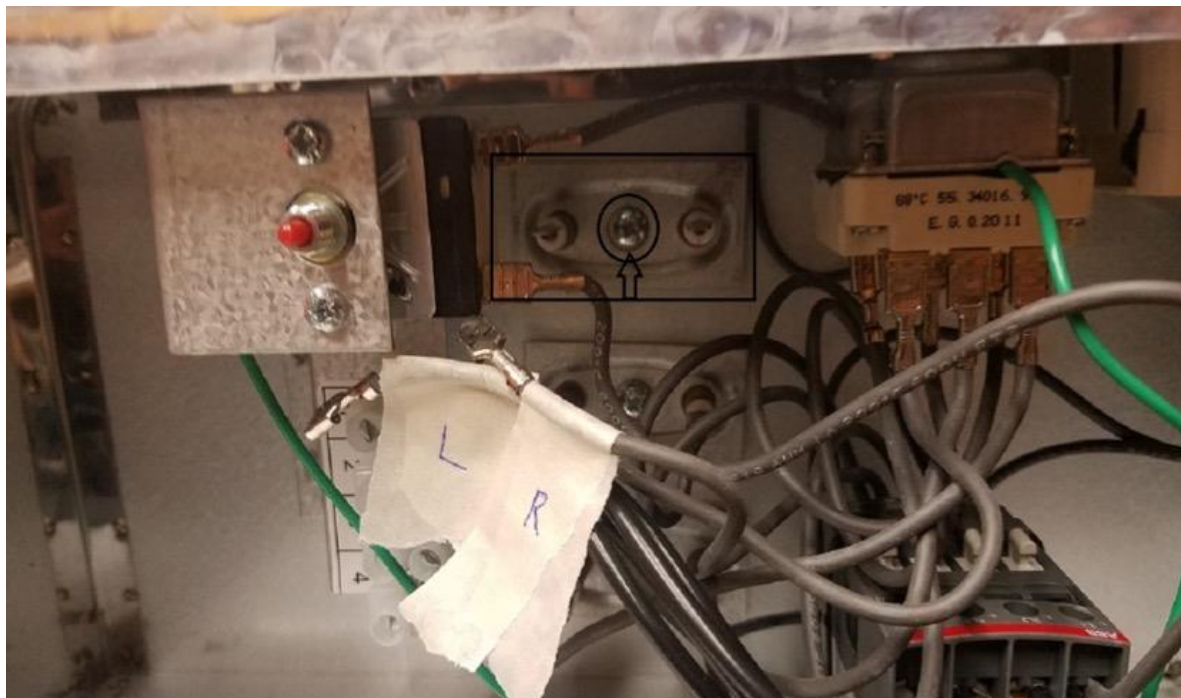
I.E. Element 1 Left/Right

Element 2 Left/Right

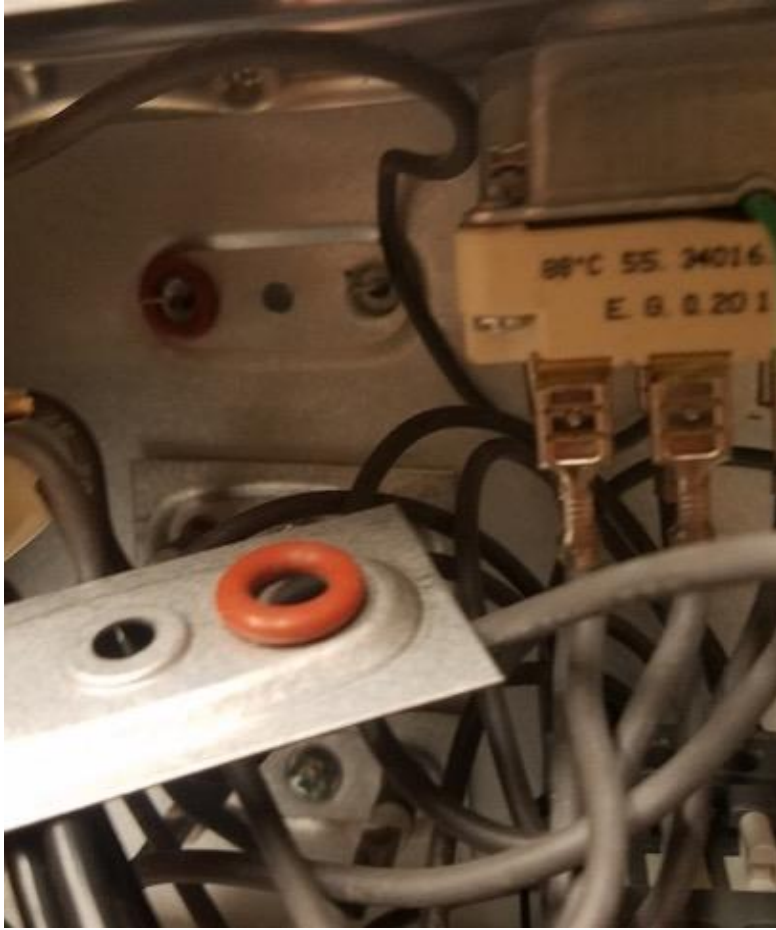
Element 3 Left/Right

Remove the center screw circled in image 2.

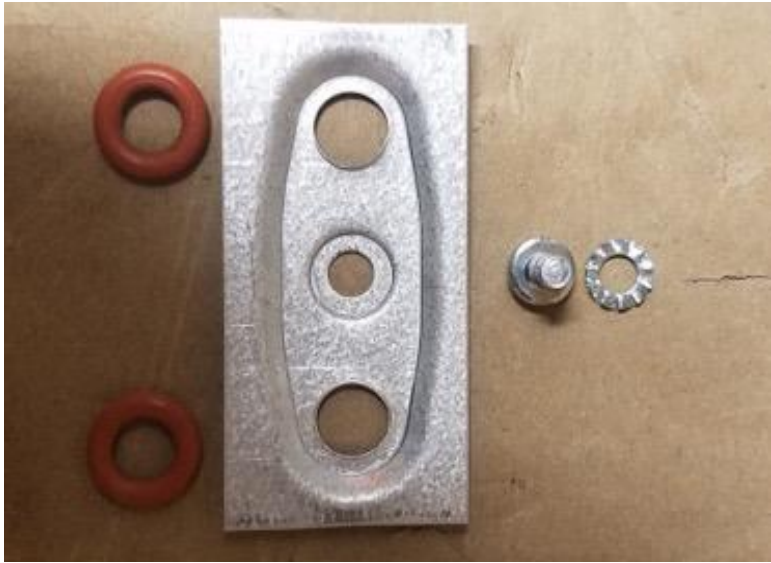
**IMAGE 2**



**IMAGE 3 - indentation in, facing towards the heater bottom for reinstallation**



**IMAGE 4-** Removal of set screw, lock washer, silicone rings, and element plate.



**IMAGE 5** - Stand heater upright & gently pull/wiggle unsecured element out of the body of the heater



The new element (s) will drop down into the heater; terminal ends go through the two holes (Image 5)  
The element should set all the way down to the bottom of heater.

Once in place, flip heater onto it's back.

Put the O'ring gaskets back on the element terminals. One on each.

The element plate will go on next, set screw, and then the two terminal wires to element.

Repeat all the steps shown in this guide, to complete element replacement, and placing heater back into full service.

