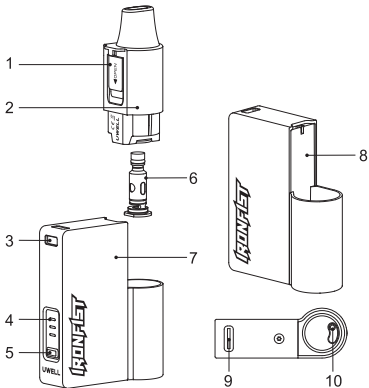




CALIBURN & IRONFIST L Pod System
User Manual

Illustration



1. Filler Plug

2. Pod

3. Lanyard Ring

4. LED Indicator

5. Power Adjustment Button

6. Coil

7. Device

8. Light

9. Type-C Port

10. Airflow Adjustment Slider

Quick Guide

1. Open the filler plug and fill the e-liquid through the filling port, put the filler plug on, and let the pod sit for 10 minutes.
2. Insert the pod into the device.
3. Draw to vape.

Specifications

- Materials: PCTG, PC, Zinc Alloy
- Dimensions: 46.5 mm × 17.6 mm × 69.75 mm
- Net Weight: 64.8 g
- E-liquid Capacity: 2.5 ml
- Output Power: Maximum 16 W
- Coil Specifications:
 - FeCrAl UN2 Meshed-H 0.8 Ω CALIBURN G Coil
 - FeCrAl 1.0 Ω CALIBURN G Coil (Sold separately)
 - FeCrAl UN2 Meshed-H 1.2 Ω CALIBURN G2 Coil
- Battery Capacity: 690 mAh

The Packaging Includes

- 1 × CALIBURN & IRONFIST L Device
- 1 × CALIBURN & IRONFIST L Empty Cartridge
- 1 × UN2 Meshed-H 0.8 Ω CALIBURN G Coil
(Pre-installed)
- 1 × UN2 Meshed-H 1.2 Ω CALIBURN G2 Coil (Spare)
- 1 × User Manual
- 1 × Type-C Charging Cable

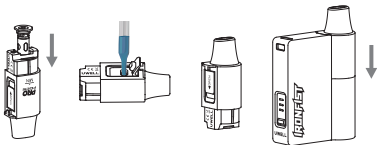
Features

1. Simple and sleek appearance on a compact body, with a comfortable grip.
2. Three-stage adjustable output power for an adaptive vaping experience.
3. With an e-liquid container light (long-press the power adjustment button can turn off the light).
4. Adjustable airflow meets users' vaping requirements.
5. The device is compatible with CALIBURN G series coils.
6. Stable, safe, and reliable performance based on a built-in safety mechanism.
7. Upgraded UWELL Pro-FOCS technology restores the flavor excellently.
8. 2A fast charging.

Instructions

1. Pod filling

- Place the coil correctly.
- Open the filler plug and fill the pod with e-liquid.
- Close the filler plug.
- Insert the pod into the device.



Attention

- When installing a coil, please make sure the coil aligns with the locating slot in the cartridge.
- Open the filler plug and fill the e-liquid through the filling port, put the filler plug on, and let the pod sit for 10 minutes.
- After the first e-liquid filling, please let it sit for 10 minutes to avoid coil burning.
- Please refill e-liquid when the e-liquid reaches the MIN mark.

2. Vaping

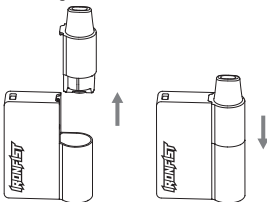
Draw to vape, and turn the LED indicator and the light on while vaping. The device can vape no more than 8 seconds every single time. It will stop output in the case of vaping for over 8 seconds.

3. Turn on/off

Press the power adjustment button 5 times in 2 seconds to turn on/off the device, the LED indicator will flash 3 times in green.

4. Pod replacement

- Take the used pod off and install a new pod into the device.
- Let the pod sit for 10 minutes after the first filling to avoid coil burning.



5. Turn on/off the light

Long-press the power adjustment button for over 1 second to turn on/off the light. The light will flash 3 times when turning it on/off.

6. Battery level indication

During vaping, three green indicators correspond to the battery level is over 60%, two blue indicators correspond to the battery level is 30%-60%, and a red indicator corresponds to the battery level under 30%. The indicator flashes 10 times in red to correspond to the battery level being too low, and the device will stop output.

7. Output power level indication

Press the power adjustment button once, the white indicator stays on, and the indicator quantities will correspond to the current output power level. One indicator corresponds to the output power is 3.2 V, two indicators correspond to the output power is 3.4 V, and three indicators correspond to the output power is 3.6 V. Press the power adjustment button to switch to the next output power level during the power adjustment process.

8. Short-circuit protection

When a short-circuit occurs, the indicator will flash 3 times in red.

9. Low-voltage protection

If the battery level is below the safety level, the indicator will flash 10 times in red.

10. Overtime protection

If vaping lasts for more than 8 seconds, the indicator will flash 5 times in green and stop output.

11. Open circuit indication

If the pod is not connected or poorly connected, the device will signal this by flashing in blue 3 times and stopping output.

12. Charging

As soon as the Type-C charging cable is connected, the device will flash in colors to indicate charging. The indicator color corresponds to the current battery level: one indicator flashes in red, corresponding to a low

battery level, and two indicators flash in blue to correspond to a medium battery level, three indicators flash in green to correspond to the battery is almost fully charged. When charged to full, the three indicators will stay on in green. When the cable is disconnected, the indicator turns off.

Attention

1. Please charge with certified high-quality adaptor from a reputable company and a Type-C cable with the charging current of 5V/2A.
2. The device and adaptor may warm up when charging, keep away from flammable and explosive goods.
3. Please use a dry and soft cloth to clean the device. Keep away from water or any liquids.
4. Please remove the pod cartridge and store it separately when you are on a plane to avoid leakage due to pressure changes.
5. Please do not put the device in your pocket with other hard objects to avoid damages.
6. Please turn off the device when it is not in use.

7. Please charge the device at least once a month.
8. Don't disassemble the device.
9. Avoid high temperature, low temperature and humidity during use or storage to avoid damage to the equipment.
10. The product parameters or pictures in this manual are for illustration purpose only, please refer to the actual product.

Safety Instruction

Please read the following safety instructions carefully before using the product.

1. This product is only available to people who have reached the legal age of smoking. It is strictly forbidden for young children, pregnant women and women during breastfeeding or for patients with heart disease, high blood pressure, diabetes, depression and asthma.
2. Please put the product out of reach of children and pets to avoid injury.
3. When using this product, please keep away from inflammable and explosive materials to avoid injury.

4. The company does not assume any responsibility for any equipment damage or personal injury caused by user misuse.

Warranty Details

Please keep the anti-counterfeit code and proof of purchase after purchasing the product. The warranty period is 180 days from the date of purchase. Our company provides warranty service (Device and atomizer only, exclude coil head and pod cartridge). Please note that any of the following conditions are not covered by the warranty:

1. Exceeding the warranty period.
2. Damage caused by the use, maintenance, and storage that is not in accordance with the requirements as instructed.
3. Damage caused by unauthorized repair.
4. Damage caused by the usage of non-UWELL components.
5. Damage caused by force majeure.

Verification

1. Visit the UWELL official website www.myuwell.com through a smartphone or PC.
2. Please enter the 16 digits authentic code, and the result will be displayed in a few seconds.
3. Please feel free to contact UWELL via e-mail, phone or website for more help.

Customer Service

We pride ourselves on manufacturing quality products and providing excellent customer service. For any issues, please contact us at service@myuwell.com.

* UWELL reserves the right of final interpretation in the user manual.

* It is hereby stated that the markable area on the product is not enough to mark the CE and WEEE as the standard dimensions.

UWELL

www.myuwell.com



Manufactured by SHENZHEN UWELL TECHNOLOGY CO., LTD.

©2023 By SHENZHEN UWELL TECHNOLOGY CO., LTD., All Rights Reserved.
Designed by UWELL Made in China



Uwelltech



Uwelltech



Uwelltech



Uwelltech



Uwell