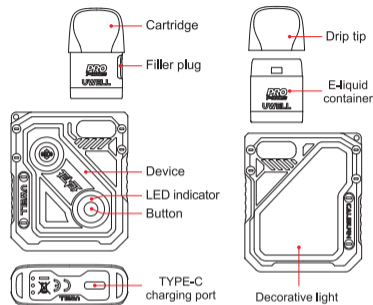


CALIBURN

CALIBURN GK3 TENET Pod System

User Manual

Illustration



Quick Guide

1. Take the cartridge off the device, then remove the insulating film from the bottom.
2. Open the filler plug to fill the cartridge with e-liquid, insert the cartridge back into the device, then wait for 10 minutes after its first filling.
3. Press the button 5 times in 2 seconds to turn on the pod system, then draw to vape.

- 1 -

Specifications

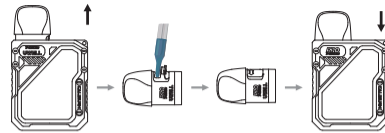
- Materials: PCTG, Aluminium Alloy
- Dimensions: 50 mm × 19.1 mm × 78 mm
- Net Weight: Approx. 76 g
- E-liquid Capacity (side refill): 2.5 ml
- E-liquid Capacity (top refill): 2 ml
- Output Power: Maximum 25 W
- Cartridge Specifications:
 - FeCrAl Meshed 0.6 Ω CALIBURN G3 Integrated Coil Cartridge (side refill)
 - FeCrAl Meshed 0.9 Ω CALIBURN G3 Integrated Coil Cartridge (top refill)
- Battery Capacity: 1000 mAh

Instructions

1. Cartridge filling and replacement (side refill)

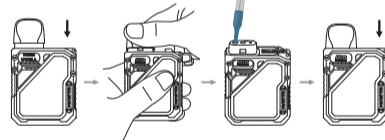
- a. Take the cartridge off the new device for the first filling and remove the insulating film on the bottom of the cartridge before use.
- b. Open the filler plug and fill the cartridge with e-liquid.
- c. Plug the filler plug after filling.
- d. Insert the cartridge back into the device.
- e. For the cartridge replacement, please remove the used cartridge and insert a new one.

- 2 -



2. Cartridge filling and replacement (top refill)

- a. For the first filling, please take the pod from the package and insert it into the device.
- b. Remove the drip tip as shown in the picture below.
- c. Fill the cartridge through the red filling port, put the drip tip back and the clicking sound will hint at proper installation.
- d. For the cartridge replacement, please remove the used cartridge and insert a new one.



Attention

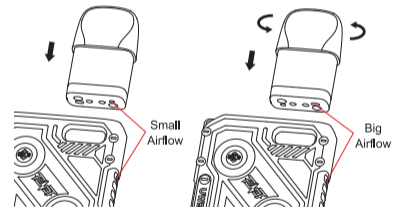
- a. Insert the nozzle of the e-liquid bottle into the filling port to fill it with e-liquid.

- 3 -

- b. Please put the filler plug/drip tip back as soon as the filling is done, and make sure it is properly sealed to prevent e-liquid leakage.
- c. Let the cartridge sit for 10 minutes after the first filling to avoid coil burning.
- d. Please make a timely refilling when the e-liquid is under the MIN level.

3. Airflow adjustment

Insert the cartridge into the device in different directions to switch between the big airflow and the small airflow.



4. Turn on/off

Press the button 5 times within 2 seconds to turn the device on/off. The LED indicator and decorative light will flash in green 3 times when turned on and flash in red 3 times when turned off.

- 4 -

5. Turn on/off decorative light

For the first use, the LED indicator and decorative light are turned on by default.

Turn on: Press the button 3 times in 2 seconds, then the LED indicator and decorative light will flash in green 3 times to indicate the decorative light is on.

Turn off: Press the button 3 times in 2 seconds, then the LED indicator will flash in red 3 times to indicate the decorative light is off.

6. Vaping

Please draw to vape when the device is on. When vaping, the LED indicator shows the power with the corresponding color at first, then it runs in a circle with different colors, and the decorative light will flicker 3 times as well.

7. Battery level indication

During vaping, the LED indicator flashes in green when the power is over 60%, flashes in blue when the power is about 30%-60%, and flashes in red when the battery is lower than 30%.

8. Charging

Connect the device to a power source through a TYPE-C charging cable, the device will vibrate twice to indicate charging, and the LED indicator runs in a circle and the decorative light flickers. When the charging is done, the device will vibrate once, and the LED indicator as well as decorative light will stay lit in green. The device will vibrate twice when disconnecting the charging cable.

9. Protection and indication

a. Short-circuit protection: When short-circuit occurs, the LED indicator will flash in red 3 times, the device will vibrate twice, and then the device will stop outputting.

b. Low voltage protection: When the power is low, the LED indicator will flash in red 10 times, the device will vibrate 3 times, and then device will stop outputting.

c. Overtime protection: If vaping lasts more than 8 seconds, the LED indicator will flash in green 5 times, the device will vibrate twice, and then the device will stop outputting.

d. Open-circuit protection: When an open-circuit occurs under a no cartridge or disconnection situation, the LED indicator will flash in blue 3 times and the device will vibrate once.

e. Cartridge insertion/removal indication: The LED indicator will flash in green 3 times and device will vibrate once when the cartridge is inserted into the device. The LED indicator will flash in blue 3 times and the device will vibrate once when the cartridge is removed from the device.

ATTENTION:

1. Please charge with the certified power adaptor (5V/2A) and USB cable.
2. Please remove the pod from the device and store it separately when you travel by air, for the air pressure change may cause leakage.

3. Avoid high temperature, low temperature, flammables, explosives, water, and humid environment during the use or storage of the product. Please do not keep the product with hard objects to avoid damage. Please charge the device at least once a month.

WARNING

The new FDA regulations apply to the sales and distribution of all E-cig products.

1. Do not give away free samples.
2. It is prohibited to sell all types of E-cig products to people under the age of 21.
3. It is prohibited to sell all types of E-cig products in vending machines except those specified by laws and regulations.
4. It is prohibited to introduce products with "light", "low", "mild", or other similar descriptions in labels or advertisements into interstate trade.
5. It is strictly forbidden to be used by young children, pregnant women, and women during breastfeeding or patients with heart disease, hypertension, diabetes, depression, and asthma. Keep the product out of the reach of children, non-smokers, and animals.
6. Please do not drink it.
7. It may contain nicotine, which is known to be a highly addictive substance.
8. Swallowing or skin contact with this product may cause intoxication.

9. Please keep away from flammables and explosives when using or charging to avoid hazards.

10. Do not disassemble the product. The company won't be responsible for any product damage or personal injury caused by the improper operation.

11. Please consult your local vape shop or contact us through service@myuwell.com if you need help using the product.

Product Verification

- Visit UWELL's official website www.myuwell.com to verify under the SUPPORT navigation bar.
- Please scan the QR code on the package with your phone camera to verify. The result will be displayed on the page.
- Or you can enter the 16-bit anti-counterfeit code on the surface of the user manual into the input box, and the result will be displayed within seconds.

Attention:

Please keep your package and the warranty card.

Warranty Period

180 days from the purchasing date.

Warranty Parts

Device and atomizer only. Coil and pod are excluded.

Warranty Service Excluded Conditions

1. Expiration of warranty period.
2. Damage caused by failure to use, maintain and keep the product according to the requirements of the product instructions.
3. Damage caused by maintenance service personnel non-authorized by UWELL.
4. Damage caused by using inferior accessories of other brands.
5. Damage caused by the force majeure.

Warranty Service Guide

1. You can ask the shop you purchased your vaping device for the warranty service.
2. You can visit www.myuwell.com and ask for warranty service under the SUPPORT navigation bar.
3. You can contact us through service@myuwell.com if you have any questions.



Please use your phone camera to scan the QR code for further information.

UWELL

©2024 By SHENZHEN UWELL TECHNOLOGY CO., LTD.
All Rights Reserved.