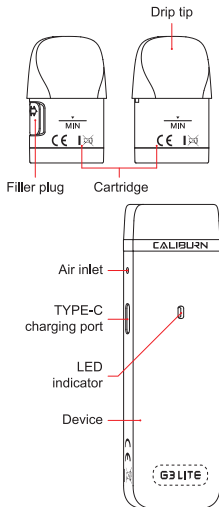


CALIBURN

User Manual

CALIBURN G3 Lite Pod System

Illustration



Quick Guide

1. Take the cartridge off the device, then remove the insulating film from the bottom.
2. Open the filler plug (or the drip tip) to fill the cartridge with e-liquid, and let the cartridge sit for 10 minutes after its first filling.

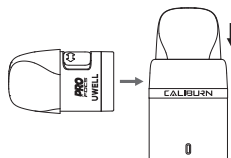
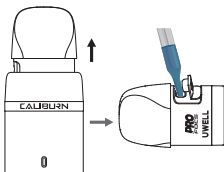
Specifications

- Materials: PCTG, PC
- Dimensions: 111.4 mm × 28.8 mm × 16.3 mm
- Net Weight: Approx. 46 g
- E-liquid Capacity (side refill): 2.5 ml
- E-liquid Capacity (top refill): 2 ml
- Output Power: Maximum 25 W
- Cartridge Specifications:
 - FeCrAl Meshed 0.6 Ω CALIBURN G3 Integrated Coil Cartridge
 - FeCrAl Meshed 0.9 Ω CALIBURN G3 Integrated Coil Cartridge
- Battery Capacity: 1200 mAh

Instructions

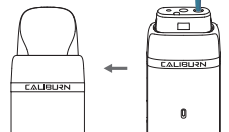
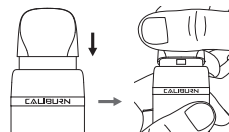
1. Cartridge filling and replacement (side refill)

- a. Take the cartridge off the new device for the first filling and remove the insulating film on the bottom of the cartridge before use.
- b. Open the filler plug and fill the cartridge with e-liquid.
- c. Plug the filler plug after filling.
- d. Insert the cartridge back into the device.
- e. For the cartridge replacement, please remove the used cartridge and insert a new one.



2. Cartridge filling and replacement (top refill)

- a. Take the cartridge off the new device for the first filling and remove the insulating film on the bottom of the cartridge before use. Then insert the cartridge back into the device.
- b. Remove the drip tip as shown in the picture below.
- c. Fill the cartridge through the red filling port, put the drip tip back and the clicking sound will hint at proper installation.
- d. For the cartridge replacement, please remove the used cartridge and insert a new one.

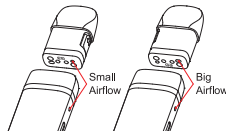


Attention:

- a. Insert the nozzle of the e-liquid bottle into the filling port to fill it with e-liquid.
- b. Please put the filler plug/drip tip back as soon as the filling is done, and make sure it is properly sealed to prevent e-liquid leakage.
- c. Let the cartridge sit for 10 minutes after the first filling to avoid coil burning.
- d. Please make a timely refilling when the e-liquid is under the MIN level.
- e. Please fill the e-liquid through the filling port instead of the airway in the middle of the cartridge.

3. Airflow adjustment

Insert the cartridge into the device in different directions to switch between the big airflow and the small airflow.



4. Vaping

Draw to vape, and the LED indicator will light up.

5. Battery level indication

During vaping, the LED indicator flashes in green when the power is over 60%, flashes in blue when the power is about 30%-60%, and flashes in red when the battery is lower than 30%.

UWELL

©2024 By SHENZHEN
UWELL TECHNOLOGY CO., LTD.
All Rights Reserved.

6. Charging

Connect the device to a power source through a Type-C charging cable, and then the indicator is on to indicate charging. The indicator flashing in red indicates low battery level, flashing in blue indicates medium battery level, and flashing in green indicates sufficient battery level. The indicator will stay lit in green when the charging is done.

7. Protection and Indication

- Short-circuit protection: When short-circuit occurs, the indicator flashes 3 times in red and the device will stop outputting.
- Low voltage protection: When the power is low, the indicator flashes 10 times in red during output and the device will stop outputting.
- Overtime protection: The indicator flashes 5 times in green to indicate an over 8-second vaping and the device will stop outputting.
- Open-circuit protection: When an open-circuit occurs under a no cartridge or disconnected situation, the LED indicator flashes 3 times in blue.
- Cartridge insertion/removal indication: The indicator will flash in green twice when the cartridge is inserted into the device. The indicator will flash in blue twice when the cartridge is removed from the device.

ATTENTION:

- Please charge with the certified power adaptor (5V/2A) and USB cable.

- Please remove the pod from the device and store it separately when you travel by air, for the air pressure change may cause leakage.
- Avoid high temperature, low temperature, flammables, explosives, water, and humid environment during the use or storage of the product. Please do not keep the product with hard objects to avoid damage. Please charge the device at least once a month.

WARNING

The new FDA regulations apply to the sales and distribution of all E-cig products.

- Do not give away free samples.
- It is prohibited to sell all types of E-cig products to people under the age of 21.
- It is prohibited to sell all types of E-cig products in vending machines except those specified by laws and regulations.
- It is prohibited to introduce products with "light", "low", "mild", or other similar descriptions in labels or advertisements into interstate trade.
- It is strictly forbidden to be used by young children, pregnant women, and women during breastfeeding or patients with heart disease, hypertension, diabetes, depression, and asthma. Keep the product out of the reach of children, non-smokers, and animals.
- Please do not drink it.
- It may contain nicotine, which is known to be a highly addictive substance.

- Swallowing or skin contact with this product may cause intoxication.
- Please keep away from flammables and explosives when using or charging to avoid hazards.
- Do not disassemble the product. The company won't be responsible for any product damage or personal injury caused by the improper operation.
- Please consult your local vape shop or contact us through service@myuwell.com if you need help using the product.

Product Verification

- Visit UWELL's official website www.myuwell.com to verify under the SUPPORT navigation bar.
- Please scan the QR code on the package with your phone camera to verify. The result will be displayed on the page.
- Or you can enter the 16-bit anti-counterfeit code on the surface of the user manual into the input box, and the result will be displayed within seconds.

Attention:

Please keep your package and the warranty card.

Warranty Period

180 days from the purchasing date.

Warranty Parts

Device and atomizer only. Coil and pod are excluded.

Warranty Service Excluded Conditions

- Expiration of warranty period.

- Damage caused by failure to use, maintain and keep the product according to the requirements of the product instructions.
- Damage caused by maintenance service personnel non-authorized by UWELL.
- Damage caused by using inferior accessories of other brands.
- Damage caused by the force majeure.

Warranty Service Guide

- You can ask the shop you purchased your vaping device for the warranty service.
- You can visit www.myuwell.com and ask for warranty service under the SUPPORT navigation bar.
- You can contact us through service@myuwell.com if you have any questions.

Please use your phone camera to scan the QR code for further information.

