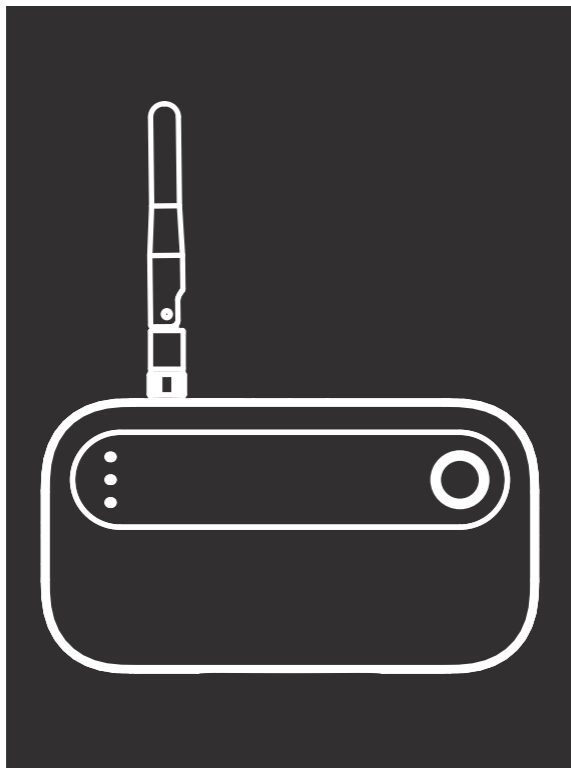


ZENDURE

SuperCharged[®]



Satellite Monitor CT

Installation Manual

✉ support@zendure.com

DISCLAIMER

The ZENDURE Satellite Monitor CT should be installed by a qualified person (electrician), who should be familiar with all electrical codes, electrical wiring practices and with experience working with home electrical systems. Any accident, damage or injury caused by incorrect installation is the sole responsibility of the user.

Read all safety instructions and other product information in this manual carefully, and read any labels or stickers attached to the product before using. Users take full responsibility for the safe usage and operation of this product. Familiarize yourself with relevant regulations in your area. You are solely responsible for being aware of all relevant regulations and using Zendure products in a way that is compliant.

Keep this manual for future reference.

CONTENTS

1. Before You Begin	1
2. Specifications	2
3. Safety Instructions	2
4. Product Features	3
4.1 What's in The Box	3
4.2 Diagrams	4
5. Installation	5

1. Before You Begin

The information contained herein is subject to change without notice. For the latest version, please visit

<https://zendure.com/pages/download-center>

2. Specifications

Satellite Monitor CT is an IoT powered electricity meter. It allows you to simultaneously monitor the consumption of any household appliances, circuits and office equipment in single-phase electrical systems.

It is perfect for monitoring household consumption, as well as tracking how much energy your solar panels are producing and controlling SolarFlow and AIO output to household appliances.

Zendure Satellite Monitor CT does not support a parallel feed configuration or comprehensive three-phase monitoring, however if your household uses three-phase electricity, it can monitor one phase in that system.

Name	Satellite Monitor CT
Model	ZDSMCT
Weight	≈ 181g
Dimensions	140 x 35 x 77mm
Rated System Voltage	100 ~ 240VAC ±10%
Frequency	50/60Hz
Consumption	< 1.1W
Max Measurement per Channel	150A
Protection Level	IP44
Operating Temperature	-20 ~ 70°C
Storage Temperature	-40 ~ 85°C
Operating Humidity (RH)	5 ~ 95%
Max Operating Altitude	3000 M
Wireless Type	Bluetooth, Wi-Fi

3. Safety Instructions

1. The product should be installed by a qualified person (electrician).
2. Please check whether Satellite Monitor CT is damaged, cracked, or cables are damaged before operating. If so, please stop using the product immediately and contact Zendure support.
3. Do not attempt to replace the internal components of the equipment by any unauthorized personnel.
4. Please install the product according to the user manual to avoid injury or damage to the product.

5. Ensure that the input power is disconnected before installation.
6. Do not install or operate the product outdoors or expose to moisture or submerge it in liquid. Only clean the ports with a dry cloth.
7. Do not use the product if it is damaged or appears to be damaged. Do not disassemble the product. Consult official Zendure channels when service or repair is required. Incorrect disassembly or reassembly may result in a risk of fire or injury to persons.
8. Adhere to all local and national safety regulations for installation and use.
9. This product is designed for residential use only.
10. Keep out of reach of children and pets.

4. Product Features

4.1 What's in The Box



Monitor



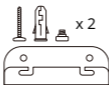
150A CT x1



AC Power Cable



IoT Antenna

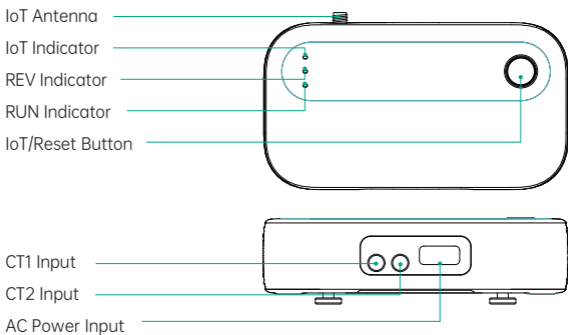


Mounting kit



Installation Manual

4.2 Diagrams



1. IoT Antenna

2. IoT Indicator

The green light flashes while pairing and will stay lit when the device is paired.

3. REV Indicator

Indicates reverse power to grid.

4. RUN Indicator

5. IoT/Reset Button

Press the button for 3 seconds to pair and connect to a Wi-Fi network, press and hold for 10 seconds to factory reset.

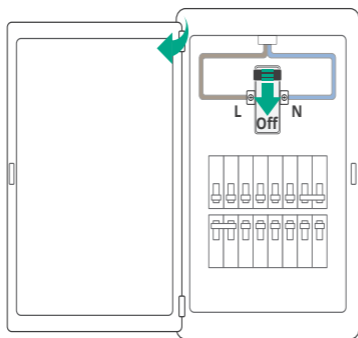
6. CT1 Input

7. CT2 Input

8. AC Power Input

5. Installation

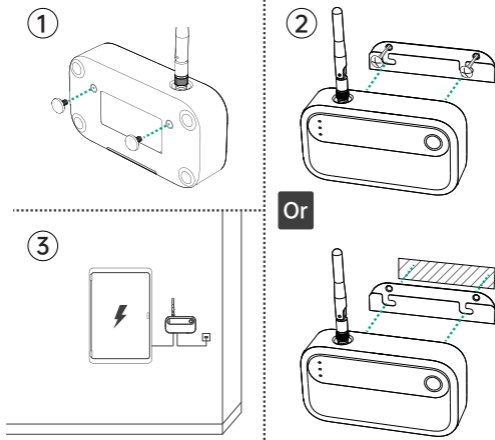
Step 1



Turn off the main breaker and remove the cover

Open the door to the electrical panel and turn off the main breaker. Remove the screws and the panel cover.

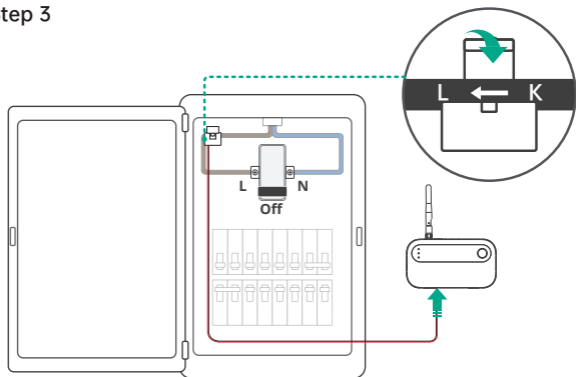
Step 2



Find a place for the Satellite Monitor CT

Using the Mounting Kit provided, install the Satellite Monitor CT beside the electrical panel or inside if there is no outlet available (using appropriate procedures).

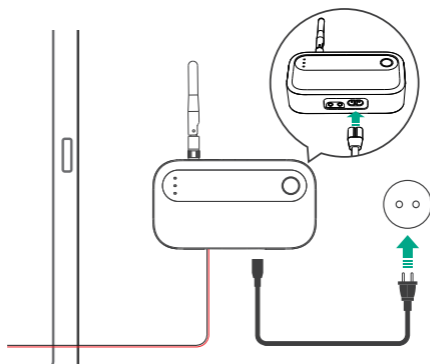
Step 3



Clamp CT sensor around service main

Clamp the CT sensor around the service main. Note the $K \rightarrow L$ direction of energy flow (grid to home). If the installation site uses three phase power and you have a Zendure SolarFlow or Zendure AIO, clamp the CT sensor around the same phase as those products.

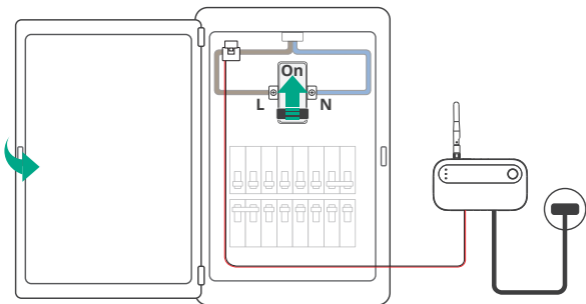
Step 4



Connect the AC power cord to the grid single-phase socket

Plug the power harness into the Satellite Monitor CT AC power input connection until it snaps into place. Then connect the harness plug to a single-phase power outlet.

Step 5



Close the cover and turn on all breakers

Secure the cover to the box with the screws and turn power on. Confirm the Satellite Monitor CT powers on, then close the door to the electrical panel.

Step 6



Download the Zendure app

Please read the Zendure app user guide download the app using the QR code above or by visiting <https://zendure.com/pages/download-center>



Privacy Policy

By using Zendure Products, Applications and Services, you consent to the Zendure Terms of Use and Privacy Policy, which you can access via the "About" section of the "User" page in the Zendure App.

Warranty

This product carries a two-year warranty from purchase date. Please feel free to contact us if you have any product questions or suggestions.

Customer Service Email:
support@zendure.com



Zendure USA Inc.
ZENDURE TECHNOLOGY CO., LIMITED
Hours: Mon - Fri 9:00 - 17:00 Pacific
Phone: 1-800-991-6148 (US)
+49-800-627-3067 (DE)

Support / Contact:
<https://zendure.de/pages/contact>
<https://eu.zendure.com/pages/contact-us>
<https://zendure.com/pages/contact>

Website:
<https://zendure.de>
<https://eu.zendure.com>
<https://zendure.com>

EC	REP
-----------	------------

 EU Importer: Zendure DE GmbH
Address: Hoferstraße 9B, 71636 Ludwigsburg
E-mail: support-eu@zendure.com

© 2023 Zendure USA Inc. All Rights Reserved.
Printed on recycled materials. MADE IN CHINA

