

**ZENDURE**  
SuperCharged Ⓢ



# SolarFlow

Balcony solar storage system



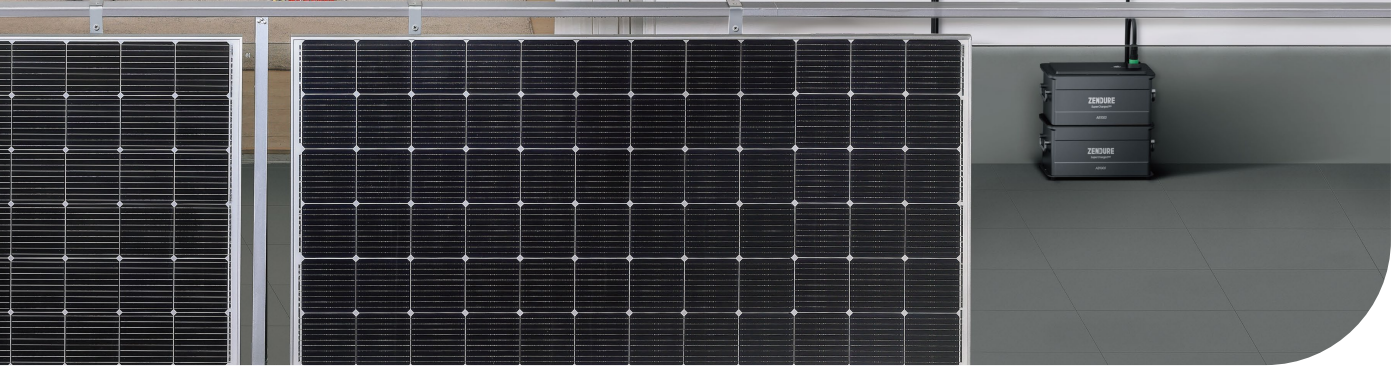
Type Approved  
Safety  
Regular Production  
Surveillance

www.tuv.com  
ID 1111272000



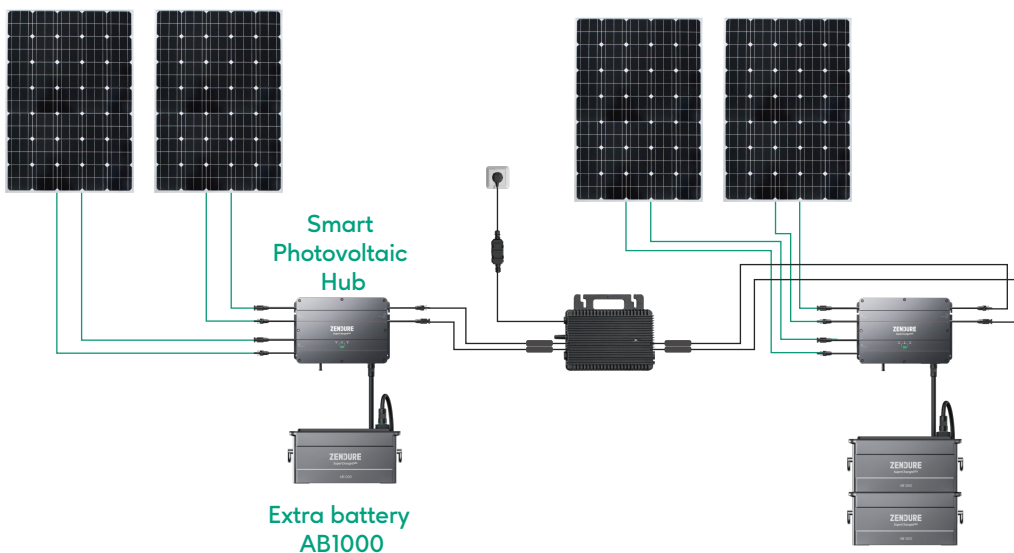
The basic warranty of the Smart PVHub and the AB1000/AB2000 is 10 years each.

*This warranty policy is limited to Zendure products only*



**SolarFlow**, a balcony solar storage system designed to use the power of the sun to help you save more on your electricity bills.

**Compatible with 99% micro-inverters**



Capable of connecting with 1-1, 1-2, 1-4 micro inverters.  
This will increase the solar input power and allow larger capacity with compatible battery.



Up to 800W Dual MPPT solar input to PV Hub 1,200W Max.  
Output power to micro inverter

Run times

600W

≈1.5 hr      ≈2.8 hr      ≈4.5 hr      ≈5.8 hr ... ≈12.5 hr

800W

≈1 hr      ≈2.2 hr      ≈3.2 hr      ≈4.5 hr ... ≈9 hr



Add up to 4 battery packs for more storage capacity.



Save annual electricity costs,  
100% self-consumption.



Balcony solar only

30%



SolarFlow + Balcony solar only

100%

\*Please consider your local lighting conditions and electricity price differences.



Universal MC4 adaptability

Unsurpassed universal compatibility with MC4 connectors allows you to use almost most solar modules and microinverters on the market, regardless of your existing system or new DIY kit.





## IP65 Waterproof Protection

SolarFlow features a particularly robust metal surface and an IP65 waterproof rating, providing complete protection against dust and water.



## Plug and play made effortless

A single cable for everything - connect, charge, disassemble and move in seconds with no mess or extra cost. With up to 4 expandable batteries (Max 7680Wh), SolarFlow is the optimal energy solution for families, small business projects and more.





Garden



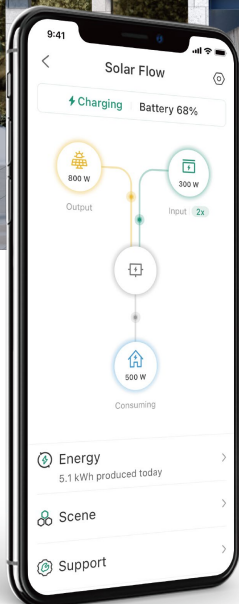
Pitched roof



Apartment

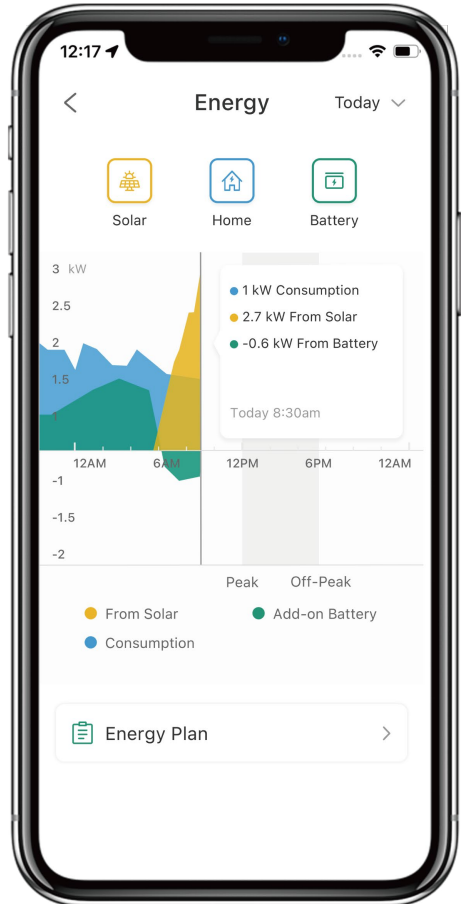


House



By using Zendure App and Satellite Plug, you can monitor, manage and optimize your home's power consumption. And check, turn on and off the current power of your households.





Customize power and storage in time intervals.  
Real-time energy flow tracking and energy analysis data.  
Open API, compatible with DIY smart devices like Home Assistant.





# Smart PVHub 1200/2000



## Smart PVHub 1200

### PV Input

PV Input 1	16-60V= 13A, 400W Max
PV Input 2	16-60V= 13A, 400W Max
Recommended PV module	210-550W Each, 1,000W Max in Total
Max DC Short Circuit Current	14.3A
Number of MPPT	2

### Output to Microinverter

Recommended Output Power of Microinverter	400W ~ 1,200W
Output Current to Microinverter	30A Max
Output Voltage to Microinverter	16V ~ 60V

### Add-on Battery

Output to AB1000(one battery)	48V =16.6A, 800W Max
Output to AB2000(one battery)	48V =16.6A, 800W Max
Output to Batteries	48V =16.6A, 800W Max
Input from Add-on Battery	48V =25A, 1,200W Max

### Efficiency

MPPT Efficiency	99%
Efficiency of Output to Microinverter	98%

### Protection

Overvoltage Protection, Overcurrent Protection, Short-circuit Protection, Overheat Protection	
Working Temperature	-20°C~45°C
Wireless Type	Bluetooth, 2.4GHz Wi-Fi
IP Rating	IP65
Warranty	10 Years

### Dimensions and Weight

Dimensions (LxWxH)	363×246×64mm
Net Weight	≈ 4.7kg

## Smart PVHub 2000

### PV Input

PV Input 1	16-60V= 26A, 900W Max
PV Input 2	16-60V= 26A, 900W Max
Recommended PV module	1,100W Each, 2,340W Max in Total
Max DC Short Circuit Current	33A
Number of MPPT	2

### Output to Microinverter

Recommended Output Power of Microinverter	400W ~ 1,200W
Output Current to Microinverter	30A Max
Output Voltage to Microinverter	16V ~ 60V

### Add-on Battery

Output to AB1000(one battery)	48V =16.6A, 800W Max
Output to AB2000(one battery)	48V =16.6A, 800W Max
Output to Batteries	48V =16.6A, 1,800W Max
Input from Add-on Battery	48V =25A, 1,200W Max

### Efficiency

MPPT Efficiency	99%
Efficiency of Output to Microinverter	98%

### Protection

Overvoltage Protection, Overcurrent Protection, Short-circuit Protection, Overheat Protection	
Working Temperature	-20°C~65°C
Wireless Type	Bluetooth, 2.4GHz&5GHz Wi-Fi
IP Rating	IP65
Warranty	10 Years

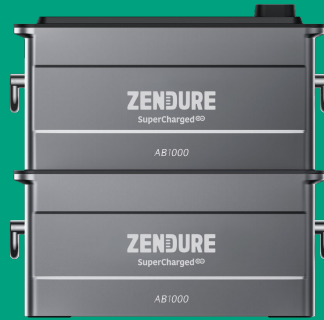
### Dimensions and Weight

Dimensions (LxWxH)	363×246×64mm
Net Weight	≈ 4.7kg





# Extra battery AB1000/AB2000



## AB1000

Capacity	960Wh (20Ah 48V)
Battery Type	LiFePO <sub>4</sub>
Life Cycle	3,000 Cycles (DOD≥80%)/ 6,000 Cycles (DOD≥70%)
Input	800W Max
Output	1,200W Max
Expandable Battery Quantity	4
Maximum Expandable Capacity	960 x 4=3,840 Wh
Overvoltage Protection	Charging & Discharging
Overcurrent Protection	Charging & Discharging
Short-circuit Protection	Yes
Overheat Protection	Yes
IP Rating	IP65
Warranty	10 Years
Charging Temperature	0°C~55°C
Discharging Temperature	-20°C~60°C
Compatibility with AB1000	Yes
Finish	Integrated Die-casting Design

### Dimensions and Weight

Dimensions (LxWxH)	350×200×187mm
Net Weight	≈ 11.5kg

## AB2000

Capacity	1,920Wh(40Ah 48V)
Battery	LiFePO <sub>4</sub>
Life Cycle	3,000 Cycles (DOD≥80%)/ 6,000 Cycles (DOD≥70%)
Input	48V 25A, 1,200W Max
Output	48V 25A, 1,200W Max
Expandable Battery Quantity	4
Maximum Expandable Capacity	1,920 x 4=7,680 Wh
Overvoltage Protection	Charging & Discharging
Overcurrent Protection	Charging & Discharging
Short-circuit Protection	Yes
Overheat Protection	Yes
Self-heating Function	Yes
IP Rating	IP66
Warranty	10 Years
Charging Temperature	-20°C~55°C
Discharging Temperature	-20°C~60°C
Automatically Self-heating Function	-20°C~0°C
Compatibility with AB1000	Yes
Finish	Integrated Die-casting Design

### Dimensions and Weight

Dimensions (LxWxH)	350×200×187mm
Net Weight	≈ 11.5kg

# ZENDURE

SuperCharged ⚡

Founded in 2017, Zendure is one of the fastest-growing EnergyTech start-ups located in the technology hubs of Silicon Valley, USA, and the Greater Bay Area, China, Japan, and Germany.

Our purpose is to accelerate a sustainable future.

Our mission is to deliver reliable and affordable clean energy for households worldwide by popularizing the latest EnergyTech.

🌐 North America site: <https://zendure.com/>

🌐 German site: <https://zendure.de/>

🌐 European site: <https://eu.zendure.de/>

## Contact us

Support: [supporteu@zendure.com](mailto:supporteu@zendure.com)

PR & Influencers: [de.marketing@Zendure.com](mailto:de.marketing@Zendure.com)

Distributors: [Sales@zendure.com](mailto:Sales@zendure.com)



[zendure.com](https://zendure.com)