

# Single Zone Ductless Heat Pump Systems • 25 SEER2 • Preferred 25 Series



**MAINLINE®**

Reliably Comfortable.®

## Product Specifications

Slim, stylish and elegant, these ductless wall mount heat pump units from Mainline® feature 25 SEER2 efficiency, inverter driven compressor technology, wireless remote control, and utilizes environmentally friendly R410A refrigerant. They also offer high & low pressure protection and optional Wi-Fi. Each ductless indoor unit is designed to heat or cool a single room, while blending seamlessly into any decor. Available in 208/230 volt models only. Compatible with Mainline® multi-zone ductless heat pump systems.



## FEATURES

- Low ambient cooling operation to -20°F
- Heating to -22°F
- Wi-Fi equipped for remote monitoring & control
- Multiple fan speeds for maximum comfort & quiet operation
- Memory function
- Gold fin condenser coil protection for added protection
- High and low pressure protection for system protection
- Turbo feature increases airflow to assist in reaching temperature set point
- Intelligent pre-heating/defrost eliminates unnecessary defrost cycles & prevents cold airflow at startup
- Control lock prevents tampering
- Smart 1 hertz inverter technology
- Permanent, washable air filters
- Over-current protection
- Anti freeze protection
- LED Display
- IFEEL function – when active senses room temperature at location of remote for improved occupant comfort

Available Models	
Outdoor Unit No.	Indoor Unit No.
BB09HXP2A1D-O	BB09HXP2A1D-I
BB12HXP2A1D-O	BB12HXP2A1D-I
BB18HXP2A1D-O	BB18HXP2A1D-I
BB24HXP2A1D-O	BB24HXP2A1D-I
BB30HXQ2B2D-O	BB30HXQ2B2D-I
BB36HXQ2B2D-O	BB36HXQ2B2D-I

Available Accessories	
Description	Model No.
Optional wall mount control	XE-71
Optional wall mount programmable premium controller	XK-76
Optional thermostat adapter <i>* 24 Volt transformer required</i>	SQZ003A01

Model Number Nomenclature	
BB	Mainline
09/12/18 24/30/36	Nominal BTUH
HXP2/HXQ2	Efficiency level 2=25 SEER2
A1/B2	Panel design
D	D=208/230
-O/-I	Outdoor Unit/Indoor Unit

## Warranty

See warranty information for more details.

All dimensions listed are nominal. MAINLINE® reserves the right to make product and material changes at any time without notice.



Contact your sales representative for more information or visit our website at [hvacmainline.com](http://hvacmainline.com)

# Single Zone Ductless Heat Pump Systems • 25 SEER2 • Preferred 25 Series

## Product Specifications



**MAINLINE**

Reliably Comfortable.®

## TECHNICAL SPECIFICATIONS

Outdoor Unit No.	Indoor Unit No.	Clg. Cap. BTUH	Htg. Cap. BTUH	SEER2	EER2	HSPF2	COP	Voltage
BB09HXP2A1D-O	BB09HXP2A1D-I	1535-10747	3412-14671	25.5	14.7	10.2	3.9	208/230-1
BB12HXP2A1D-O	BB12HXP2A1D-I	3070-14098	3070-15500	24	12.5	9	3.81	208/230-1
BB18HXP2A1D-O	BB18HXP2A1D-I	5118-21154	5118-21154	23.5	13	9	3.81	208/230-1
BB24HXP2A1D-O	BB24HXP2A1D-I	8870-28000	7200-30708	24.5	13.1	9.5	3.76	208/230-1
BB30HXQ2B2D-O	BB30HXQ2B2D-O	9490-30030	10000-32990	18	10.4	9	2.97	208/230-1
BB36HXQ2B2D-O	BB36HXQ2B2D-O	7400-36000	14980-36000	18	8.2	9	2.67	208/230-1

Note: BB(30,36)HXQ2B2D-I/O are not backwards compatible with previous BB(30,36)HQ2A3D-I/O or BB(30,36)HQ2B2D-I/O.

Reference product service manual for extended performance data.

Outdoor Unit No.	Indoor Unit No.	Liq. Conn. (Flare)	Suct. Conn. (Flare)	Fact. Refrig. Charge	Fact. Charge Length	Max Pipe Length	Add'l Charge Oz/Ft.	Max. Vert. Rise
BB09HXP2A1D-O	BB09HXP2A1D-I	¼"	3/8"	35.2 Oz.	25'	49'	.2	33'
BB12HXP2A1D-O	BB12HXP2A1D-I	¼"	1/2"	42.3 Oz.	25'	66'	.2	33'
BB18HXP2A1D-O	BB18HXP2A1D-I	¼"	5/8"	54.7 Oz.	25'	82'	.5	33'
BB24HXP2A1D-O	BB24HXP2A1D-I	¼"	5/8"	60 Oz.	25'	131'	.5	82'
BB30HXQ2B2D-O	BB30HXQ2B2D-O	¼"	5/8"	84.6 Oz.	25'	98'	.5	49'
BB36HXQ2B2D-O	BB36HXQ2B2D-O	¼"	5/8"	91.7 Oz.	25'	98'	.5	49'

Line set length must be 10' minimum (Not including indoor unit connection stub).

Outdoor Unit No.	Indoor Unit No.	MOP	MCA	ODU Sound Level	IDU Sound Level/Fan Speed	Indoor Weight	Outdoor Weight
BB09HXP2A1D-O	BB09HXP2A1D-I	15	10	52 DB	25/40 DB	25 Lbs.	70 Lbs.
BB12HXP2A1D-O	BB12HXP2A1D-I	15	10	52 DB	27/43 DB	25 Lbs.	76 Lbs.
BB18HXP2A1D-O	BB18HXP2A1D-I	20	14	55 DB	29/49 DB	29 Lbs.	107 Lbs.
BB24HXP2A1D-O	BB24HXP2A1D-I	25	16	59 DB	34/52 DB	41 Lbs.	136 Lbs.
BB30HXQ2B2D-O	BB30HXQ2B2D-O	30	20	62 DB	37/51 DB	41 Lbs.	154 Lbs.
BB36HXQ2B2D-O	BB36HXQ2B2D-O	40	24	65 DB	37/54 DB	41 Lbs.	161 Lbs.

SEER2=Seasonal Energy Efficiency Ratio – M1 Compliant  
 EER2=Energy Efficiency Ratio – M1 Compliant  
 HSPF2=Heating Season Performance Factor – M1 Compliant  
 COP=Coefficient of Performance  
 MOP = Maximum Overcurrent Protection  
 MCA = Minimum Circuit Ampacity



Contact your sales representative for more information or visit our website at [hvacmainline.com](http://hvacmainline.com)

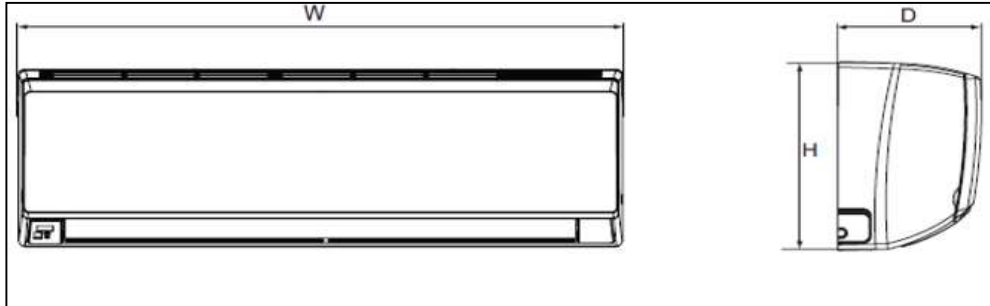
# Single Zone Ductless Heat Pump Systems • 25 SEER2 • Preferred 25 Series

Product Specifications



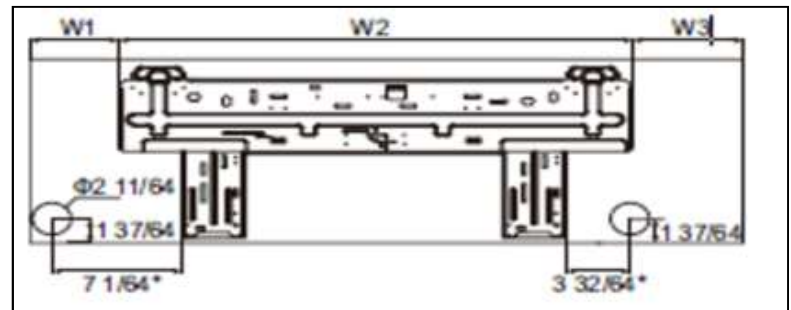
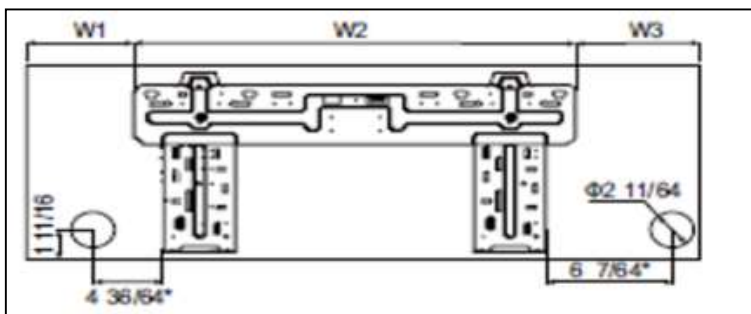
**MAINLINE**

Reliably Comfortable.®



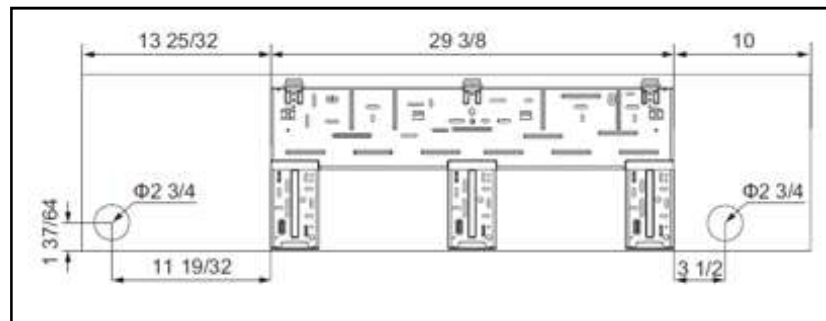
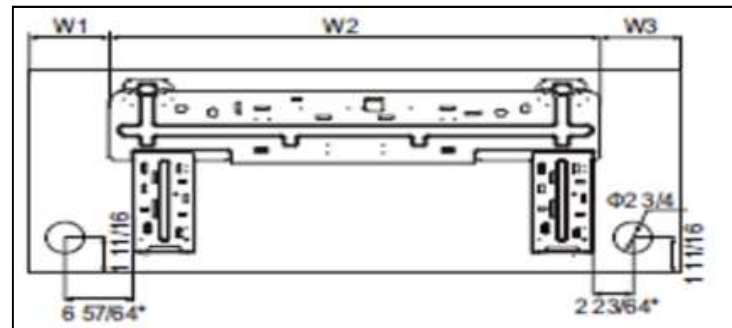
9K & 12K Model

18K Model



24K Model

30K & 36K Models



Model	W	H	D	W1	W2	W3
9-12K	32-31/64"	11-17/32"	7-23/32"	4-29/64"	21- 11/32'	6-11/16"
18K	38 -1/32"	12-1/4"	8-45/64"	4-53/64"	27-55/64"	5-63/64"
24K	42-21/6"4	13-7/64"	9-11/16"	7-7/32"	27-55/64"	7-1/4"
30-36K	53-9/64"	12-53/64"	10"	13-25/32"	29-3/8"	10"



Contact your sales representative for more information or visit our website at [hvacmainline.com](http://hvacmainline.com)

# Single Zone Ductless Heat Pump Systems • 25 SEER2 • Preferred 25 Series

Product Specifications

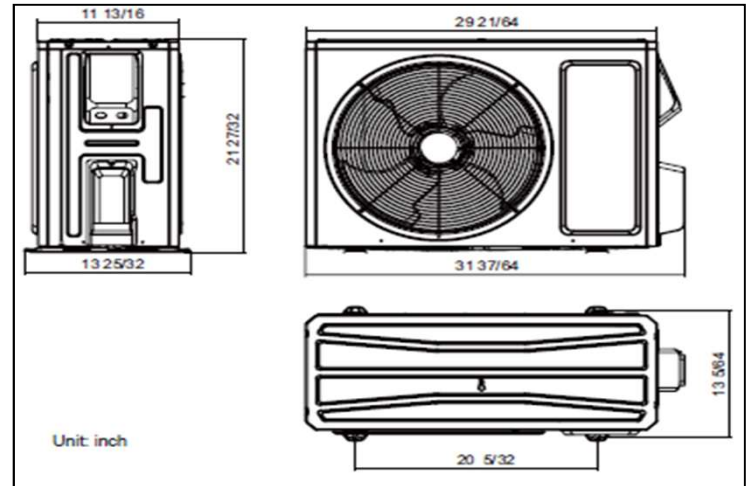
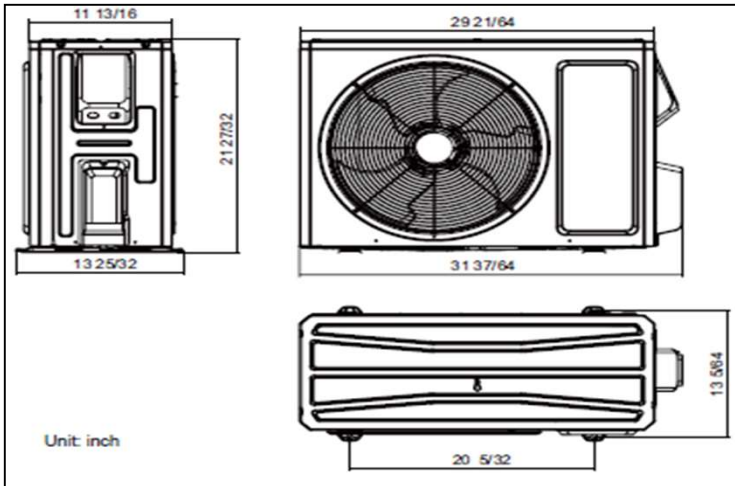


**MAINLINE**

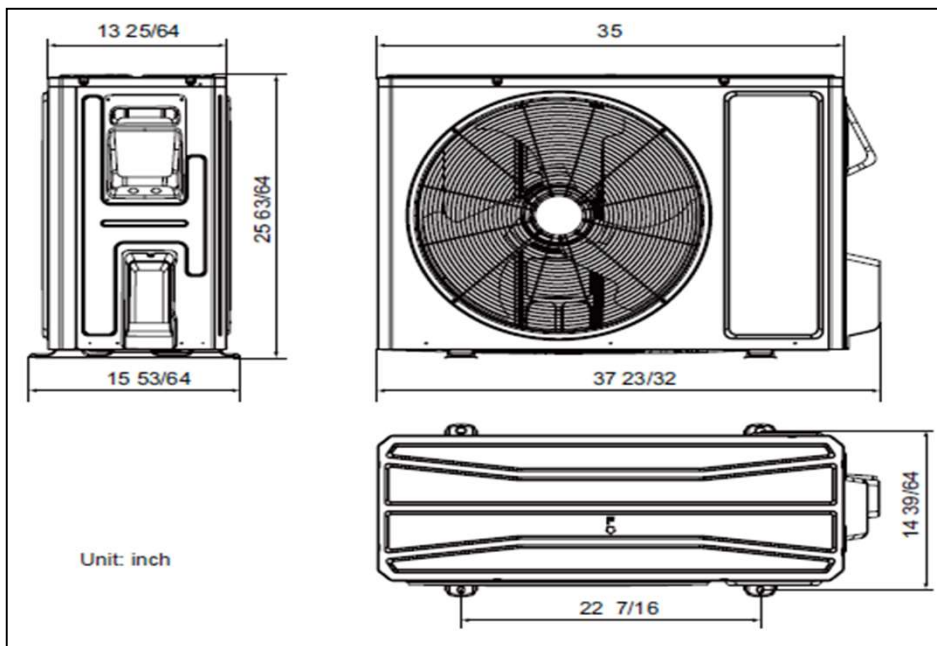
Reliably Comfortable.®

## 9K Model

## 12K Model



## 18K Model



Contact your sales representative for more information or visit our website at [hvacmainline.com](http://hvacmainline.com)

# Single Zone Ductless Heat Pump Systems • 25 SEER2 • Preferred 25 Series

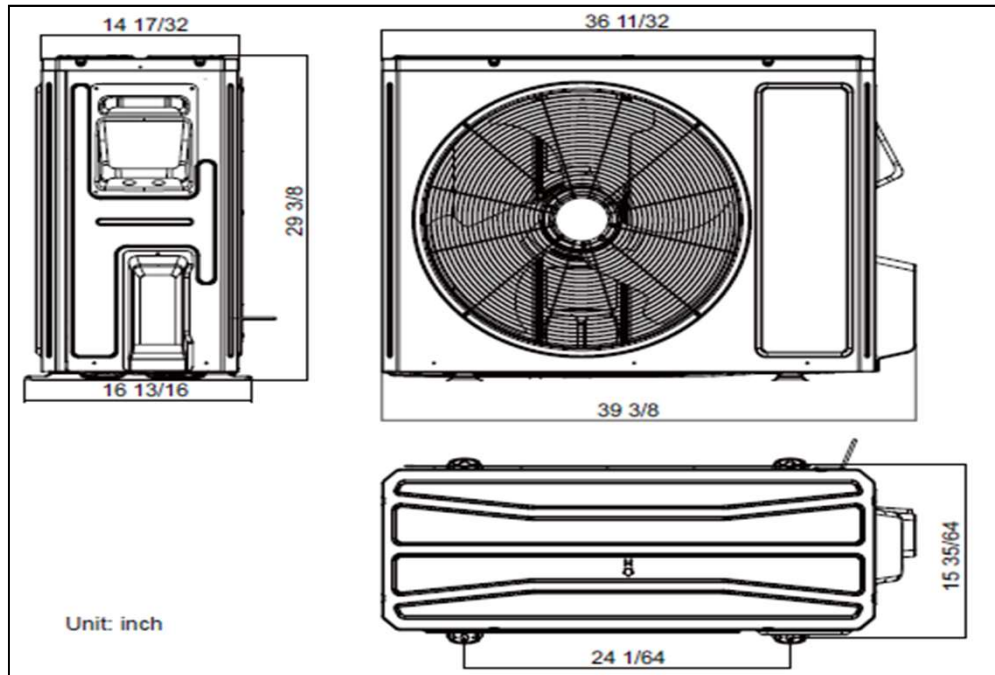
Product Specifications



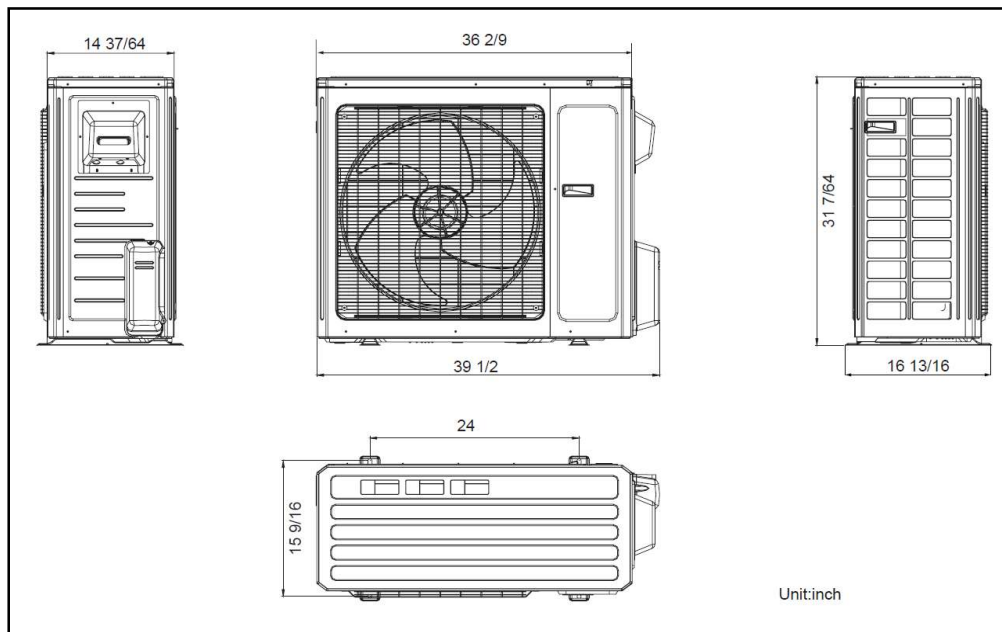
**MAINLINE**

Reliably Comfortable.®

## 24K Model



## 30K & 36K Models



Contact your sales representative for more information or visit our website at [hvacmainline.com](http://hvacmainline.com)