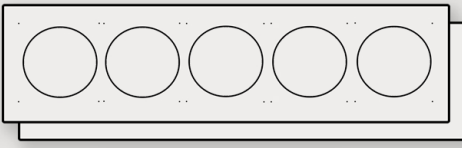


# Luggable instructions



Five Coolmaster Sickleflow PC fans



Two 25x7" panels



12V Power Adapter



DC to 7 fan socket harness



Two 16x7" side panels



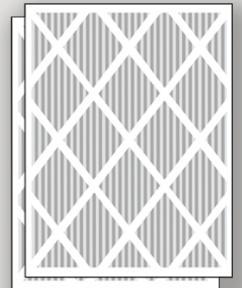
20 Fan Push Pins



5 fan grills



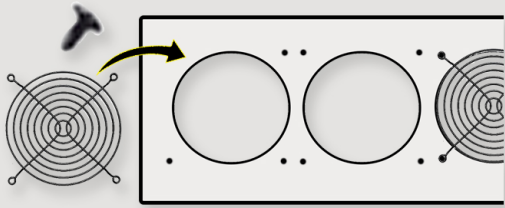
Zip Ties



\*Two 3M Filtrete 16x25" MPR 1500-2500 (sold separately)

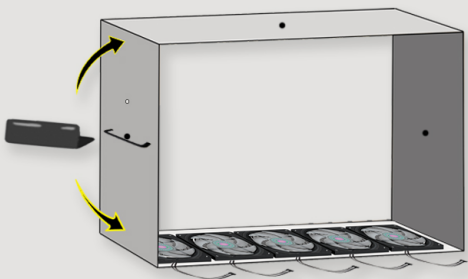
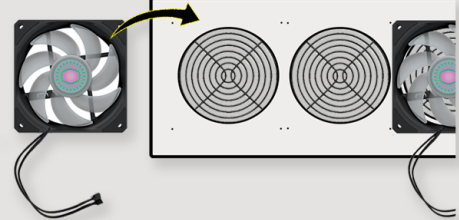


Steel Wire (taped to box)



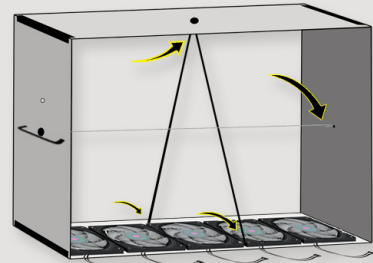
Place fan grills over the precut holes (raised side faces outwards) and insert pins on each corner. If hard to press, place grill-side down on a table and push back of panel around pin(s). Leave grill-side down for step 2

Printed fan specs should face grill while holographic sticker will face inside box. Wires should face the same direction. Firmly push fan frames onto pins. Fans should sit flush with fan panel.



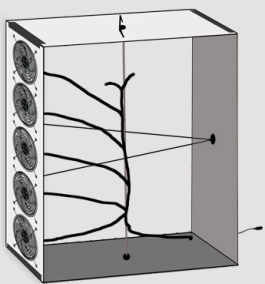
Slide panels firmly into slotted panel connectors. Squeeze from opposite ends to fully seat panels.

Hook the tension wire through the slots in the pre-installed tension clips on opposite sides. Attach bungee cord from the pre-installed tension clip at center to the back side of the fan screw holes.



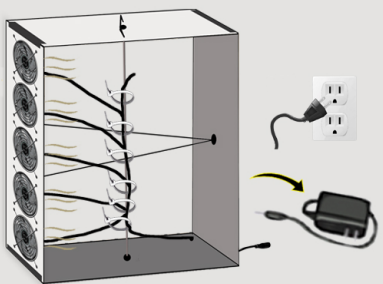
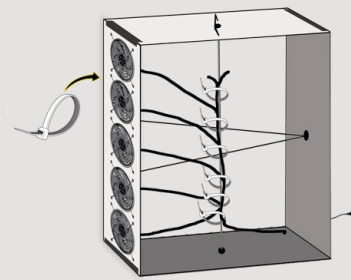
Assembly video: [www.youtube.com/@cleanairkits](http://www.youtube.com/@cleanairkits)

## instructions page 2



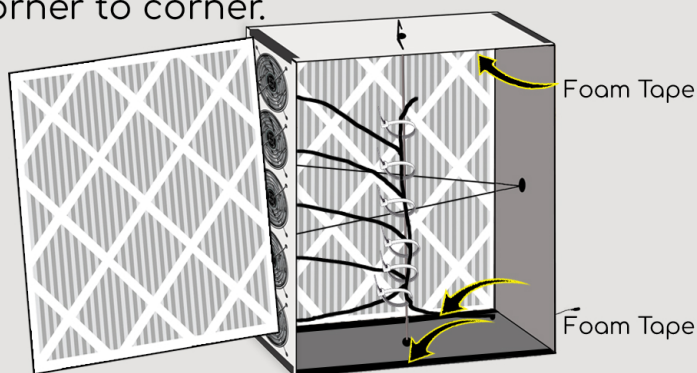
Fan harness comes pre-attached to a side panel thru stain-relief grommet. Starting with the fan closest to grommet hole, plug 5 pwm fan cables into harness sockets. Last two sockets are unused.

Secure the fan harness and cables along the central tension rod with zip ties. Pull any wire excess away from fans and tie toward tension rod.



Connect the DC barrel plug to the USBC adapter and plug charger brick into wall for test. All fans should run without hitting any wires or obstructions.

Disconnect power. Apply foam tape strips along insides of all short panels, corner to corner.



Push air filters into fan box with arrows pointing inward.



**FINAL INSPECTION.** Carefully Inspect fan box from all sides. Tighten all push pins, panel connectors and bungees. Check filter seal for long light gaps. All fans should sit flush with the fan panel. Reconnect power.

Place fan and filter sides at least 2" from walls, preferably 12" for best performance!

