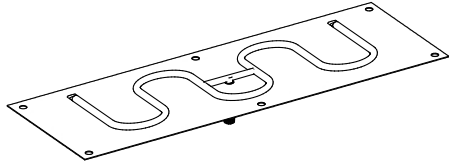
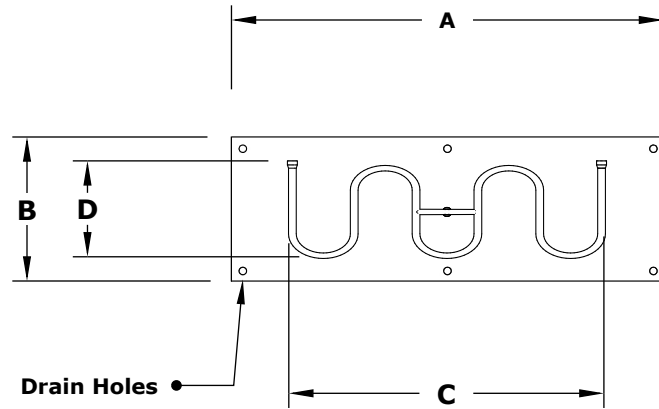


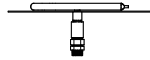
# RECTANGULAR FLAT PAN & SS SWITCHBACK BURNER - 12" WIDTH MATCH LIT IGNITION



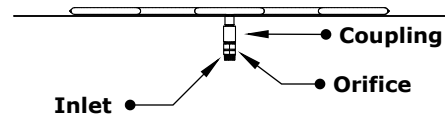
**ISOMETRIC VIEW**



**TOP VIEW**



**RIGHT SIDE VIEW**



**FRONT SIDE VIEW**

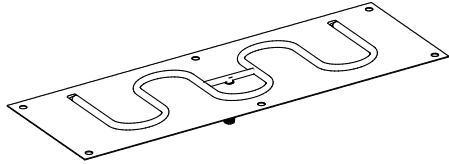
SKU	A	B	C	D	INLET	BTU
OPT-RFSB1224	24"	12"	18"	6"	1/2"	60,000
OPT-RFSB1230	30"	12"	24"	6"	1/2"	75,000
OPT-RFSB1236	36"	12"	30"	6"	1/2"	90,000
OPT-RFSB1242	42"	12"	36"	6"	1/2"	105,000
OPT-RFSB1248	48"	12"	42"	6"	1/2"	125,000
OPT-RFSB1260	60"	12"	48"	6"	1/2"	140,000
OPT-RFSB1272	72"	12"	60" (M)	6"	3/4"	170,000
OPT-RFSB1284	84"	12"	72" (M)	6"	3/4"	200,000
OPT-RFSB1296	96"	12"	84" (M)	6"	3/4"	305,000

M = Manifold

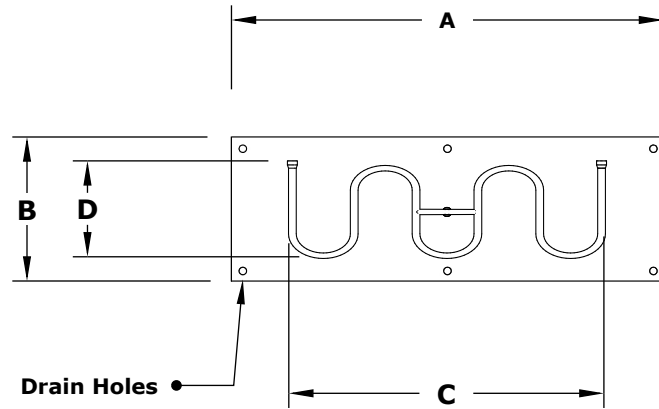
Pan Material: Aluminum  
Burner Material: Stainless Steel  
Ignition Type: Match Lit

Includes: Pan, Burner, Electronic Valve.

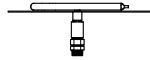
# RECTANGULAR FLAT PAN & SS SWITCHBACK BURNER - 18" WIDTH MATCH LIT IGNITION



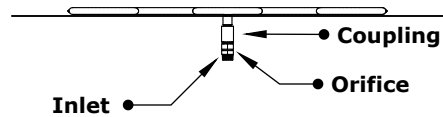
**ISOMETRIC VIEW**



**TOP VIEW**



**RIGHT SIDE VIEW**



**FRONT SIDE VIEW**

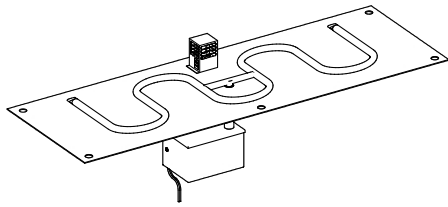
SKU	A	B	C	D	INLET	BTU
OPT-RFSB1824	24"	18"	18"	12"	1/2"	60,000
OPT-RFSB1830	30"	18"	24"	12"	1/2"	75,000
OPT-RFSB1836	36"	18"	30"	12"	1/2"	90,000
OPT-RFSB1842	42"	18"	36"	12"	1/2"	105,000
OPT-RFSB1848	48"	18"	42"	12"	1/2"	125,000
OPT-RFSB1860	60"	18"	48"	12"	1/2"	140,000
OPT-RFSB1872	72"	18"	60" (M)	12"	3/4"	170,000
OPT-RFSB1884	84"	18"	72" (M)	12"	3/4"	200,000
OPT-RFSB1896	96"	18"	84" (M)	12"	3/4"	305,000

M = Manifold

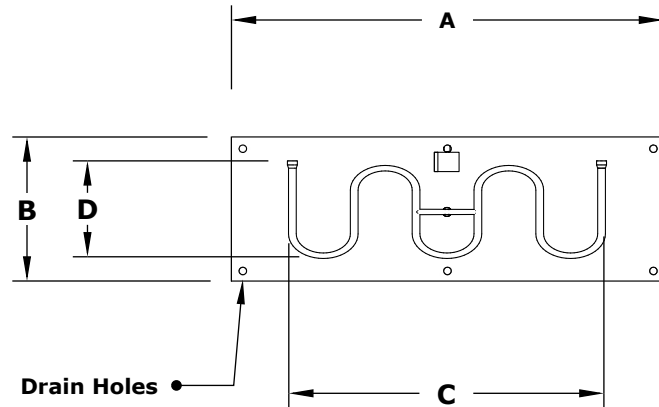
Pan Material: Aluminum  
Burner Material: Stainless Steel  
Ignition Type: Match Lit

Includes: Pan, Burner, Electronic Valve.

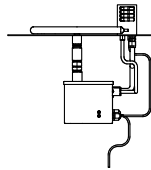
# RECTANGULAR FLAT PAN & SS SWITCHBACK BURNER - 12" WIDTH 12V ELECTRONIC IGNITION



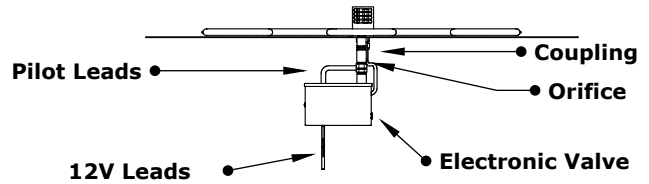
**ISOMETRIC VIEW**



**TOP VIEW**



**RIGHT SIDE VIEW**



**FRONT SIDE VIEW**

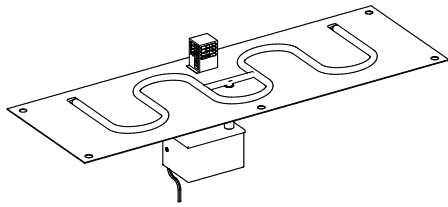
SKU	A	B	C	D	INLET	BTU
OPT-RFSB1224E12	24"	12"	18"	6"	1/2"	60,000
OPT-RFSB1230E12	30"	12"	24"	6"	1/2"	75,000
OPT-RFSB1236E12	36"	12"	30"	6"	1/2"	90,000
OPT-RFSB1242E12	42"	12"	36"	6"	1/2"	105,000
OPT-RFSB1248E12	48"	12"	42"	6"	1/2"	125,000
OPT-RFSB1260E12	60"	12"	48"	6"	1/2"	140,000
OPT-RFSB1272E12	72"	12"	60" (M)	6"	3/4"	170,000
OPT-RFSB1284E12	84"	12"	72" (M)	6"	3/4"	200,000
OPT-RFSB1296E12	96"	12"	84" (M)	6"	3/4"	305,000

Pan Material: Aluminum  
 Burner Material: Stainless Steel  
 Ignition Type: 12V Electronic Ignition  
 (12V Transformer Included)

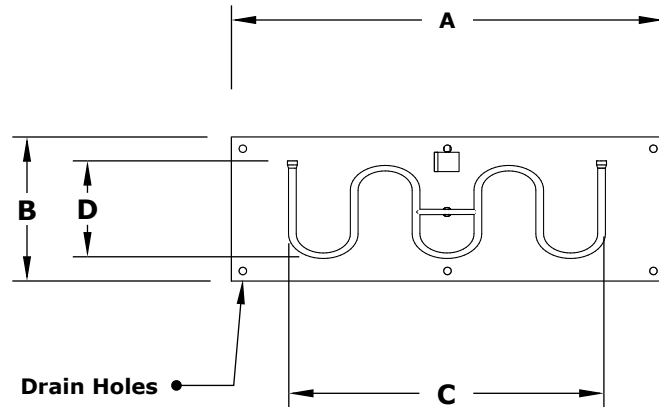
 **12V ELECTRONIC IGNITION**  
 ANSI Z21.97-(2017) / CSA 2.41-(2017)

Includes: Pan, Burner, Electronic Valve,  
 Pilot Igniter, 12V Transformer.

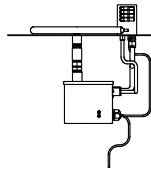
# RECTANGULAR FLAT PAN & SS SWITCHBACK BURNER - 18" WIDTH 12V ELECTRONIC IGNITION



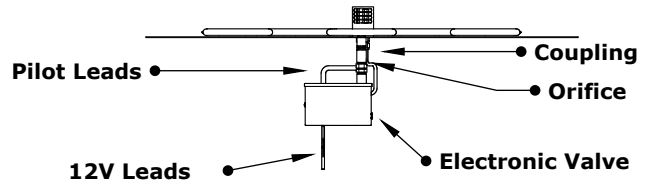
**ISOMETRIC VIEW**



**TOP VIEW**



**RIGHT SIDE VIEW**



**FRONT SIDE VIEW**

SKU	A	B	C	D	INLET	BTU
OPT-RFSB1824E12	24"	18"	18"	12"	1/2"	60,000
OPT-RFSB1830E12	30"	18"	24"	12"	1/2"	75,000
OPT-RFSB1836E12	36"	18"	30"	12"	1/2"	90,000
OPT-RFSB1842E12	42"	18"	36"	12"	1/2"	105,000
OPT-RFSB1848E12	48"	18"	42"	12"	1/2"	125,000
OPT-RFSB1860E12	60"	18"	48"	12"	1/2"	140,000
OPT-RFSB1872E12	72"	18"	60" (M)	12"	3/4"	170,000
OPT-RFSB1884E12	84"	18"	72" (M)	12"	3/4"	200,000
OPT-RFSB1896E12	96"	18"	84" (M)	12"	3/4"	305,000

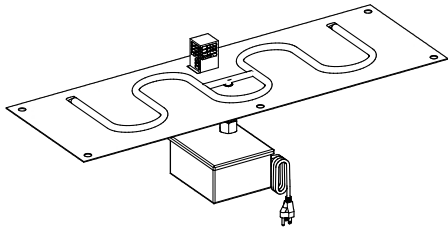
Pan Material: Aluminum  
 Burner Material: Stainless Steel  
 Ignition Type: 12V Electronic Ignition  
 (12V Transformer Included)



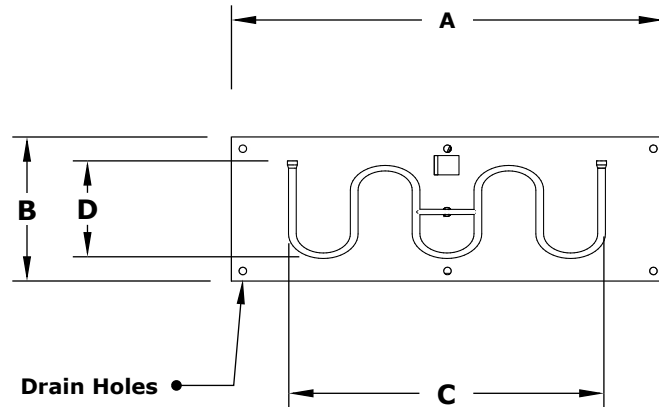
**12V ELECTRONIC IGNITION**  
 ANSI Z21.97-(2017) / CSA 2.41-(2017)

Includes: Pan, Burner, Electronic Valve,  
 Pilot Igniter, 12V Transformer.

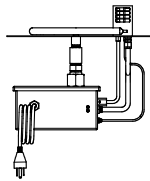
# RECTANGULAR FLAT PAN & SS SWITCHBACK BURNER - 12" WIDTH 110V ELECTRONIC IGNITION



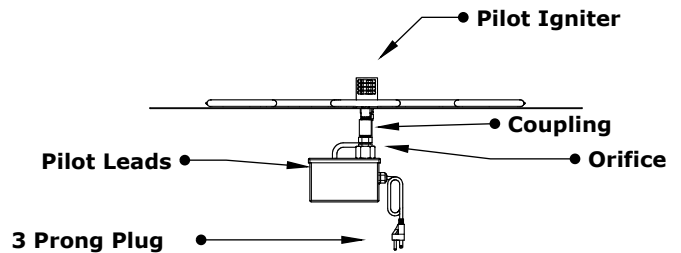
**ISOMETRIC VIEW**



**TOP VIEW**



**RIGHT SIDE VIEW**



**FRONT SIDE VIEW**

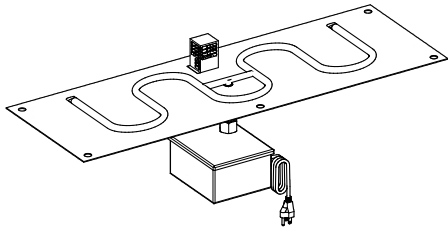
SKU	A	B	C	D	INLET	BTU
OPT-RFSB1224E110	24"	12"	18"	6"	1/2"	60,000
OPT-RFSB1230E110	30"	12"	24"	6"	1/2"	75,000
OPT-RFSB1236E110	36"	12"	30"	6"	1/2"	90,000
OPT-RFSB1242E110	42"	12"	36"	6"	1/2"	105,000
OPT-RFSB1248E110	48"	12"	42"	6"	1/2"	125,000
OPT-RFSB1260E110	60"	12"	48"	6"	1/2"	140,000
OPT-RFSB1272E110	72"	12"	60" (M)	6"	3/4"	170,000
OPT-RFSB1284E110	84"	12"	72" (M)	6"	3/4"	200,000
OPT-RFSB1296E110	96"	12"	84" (M)	6"	3/4"	305,000

Pan Material: Aluminum  
 Burner Material: Stainless Steel  
 Ignition Type: 110V Electronic Ignition  
 (110V Transformer Included)

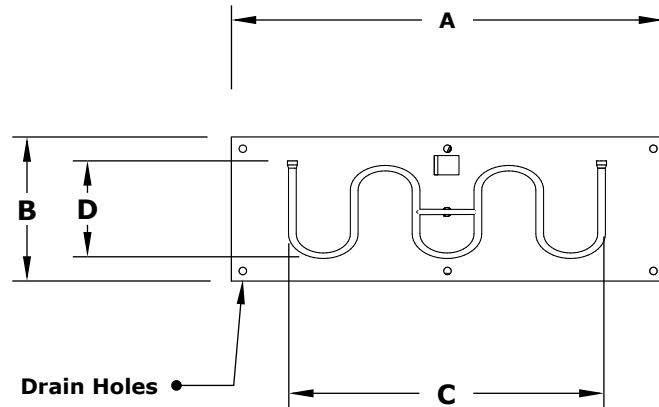
 **110V ELECTRONIC IGNITION**  
 ANSI Z21.97-(2017) / CSA 2.41-(2017)

Includes: Pan, Burner, Electronic Valve,  
 Pilot Igniter, 110V Transformer.

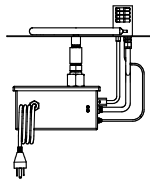
# RECTANGULAR FLAT PAN & SS SWITCHBACK BURNER - 18" WIDTH 110V ELECTRONIC IGNITION



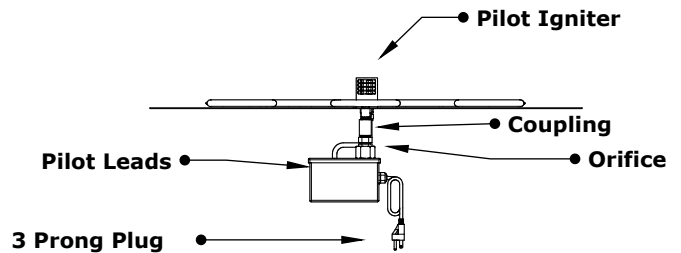
**ISOMETRIC VIEW**



**TOP VIEW**



**RIGHT SIDE VIEW**



**FRONT SIDE VIEW**

SKU	A	B	C	D	INLET	BTU
OPT-RFSB1824E110	24"	18"	18"	12"	1/2"	60,000
OPT-RFSB1830E110	30"	18"	24"	12"	1/2"	75,000
OPT-RFSB1836E110	36"	18"	30"	12"	1/2"	90,000
OPT-RFSB1842E110	42"	18"	36"	12"	1/2"	105,000
OPT-RFSB1848E110	48"	18"	42"	12"	1/2"	125,000
OPT-RFSB1860E110	60"	18"	48"	12"	1/2"	140,000
OPT-RFSB1872E110	72"	18"	60" (M)	12"	3/4"	170,000
OPT-RFSB1884E110	84"	18"	72" (M)	12"	3/4"	200,000
OPT-RFSB1896E110	96"	18"	84" (M)	12"	3/4"	305,000

Pan Material: Aluminum  
 Burner Material: Stainless Steel  
 Ignition Type: 110V Electronic Ignition  
 (110V Transformer Included)

 **110V ELECTRONIC IGNITION**  
 ANSI Z21.97-(2017) / CSA 2.41-(2017)

Includes: Pan, Burner, Electronic Valve,  
 Pilot Igniter, 110V Transformer.