

FL3833 FL3835  
FL3834 FL3836

# STANDARD FLOOR LOOM™ TRAP

## ASSEMBLY



Find out more at [schachtspindle.com](http://schachtspindle.com)  
Schacht Spindle Company 6101 Ben Place Boulder, CO 80301  
p. 303.442.3212 800.228.2553 f. 303.447.9273

© 2021 Schacht Spindle Company, Inc.

04.21

# STANDARD FLOOR LOOM™ TRAP

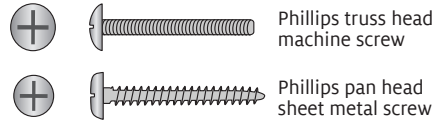
## ASSEMBLY

### PARTS

- 2X rod supports (right and left)
- 2X clamp blocks
- 2X cross rods
- 1X cloth sleeve
- 4X spacers
- 4X 1/4-20 x 2-1/4" Phillips truss head machine screws
- 4X #10 x 1-3/4" Phillips pan head sheet metal screws

### TOOLS REQUIRED

- #2 Phillips screwdriver



### ASSEMBLE THE ROD SUPPORTS

The rod supports have gray material on one side to press against the front legs of your Standard Floor Loom. The rod supports have four holes, as shown in Figure 1. You'll use the two holes at the back to attach a clamp block; then you'll attach cross rods to the two holes at the front.

1. Insert a 1/4-20 x 2-1/4" Phillips truss head machine screw through one hole in a clamp block. Place a spacer over the shaft of this screw, as shown in Figure 2A.
2. Orient the left rod support so that the side with the gray material faces the screw and spacer, as shown in Figure 2A.
3. Insert the screw through hole A of the rod support and tighten just enough to hold the pieces together. The clamp block is now attached to the rod support but can rotate freely (Figure 2B).

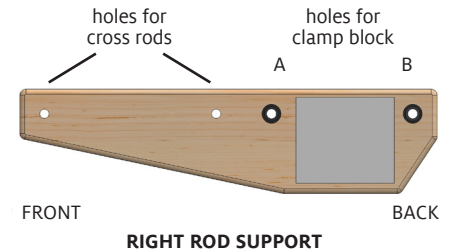
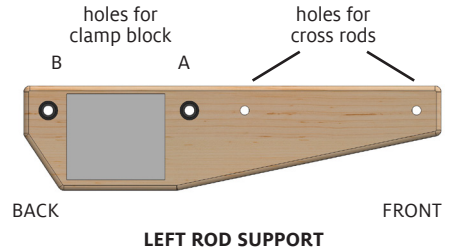
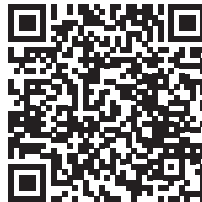
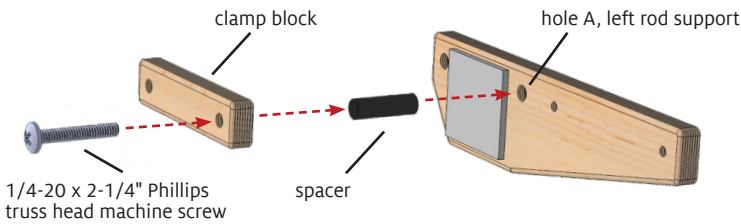


FIGURE 1: ROD SUPPORTS

Find more  
information  
on our website!

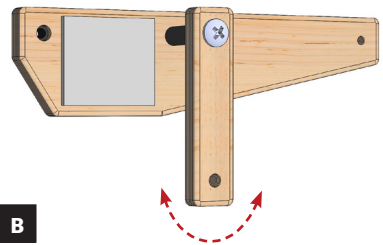




**A**

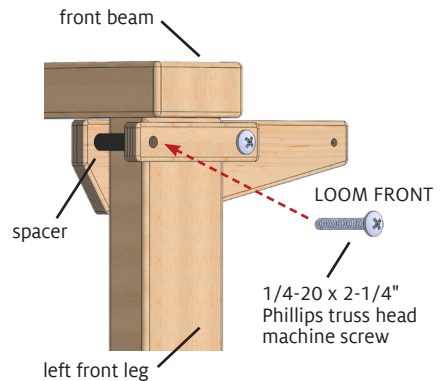
4. Repeat steps 1 through 3 for the right rod support.
5. Place the connected rod supports and clamp blocks around the front legs of your loom, with the clamp block on the outer side and the rod support on the inner side of the front leg, as shown in Figure 3.
6. Clamp each rod support to the leg as follows: Insert another 1/4-20 x 2-1/4" Phillips truss head machine screw through the clamp block. Place a spacer over its shaft and push the screw through hole B in the rod support. Tighten this screw just enough to hold everything in place on the loom leg. Position the rod support just below the front beam and tighten both machine screws fully.

The rod supports should sit at the same height on the loom; if you wish, you can raise or lower the trap after you finish assembling it.



**B**

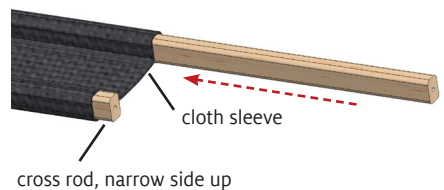
*FIGURE 2: ASSEMBLE CLAMP BLOCK*



*FIGURE 3: INSTALL CLAMP BLOCK*

### INSTALL THE CROSS RODS

7. Slide the cross rods, with their narrow sides up, into the casings on the long sides of the cloth sleeve, as shown in Figure 4.
8. Set the cloth sleeve in place between the rod supports, as shown in Figure 5 on the next page. Have a helper hold it in position, or rest it on your loom bench or small table.



*FIGURE 4: ASSEMBLE CLOTH SLEEVE*

9. Using two #10 x 1-3/4" Phillips pan head sheet metal screws, attach the cross rods to one rod support. Tighten these screws just enough to hold the cross rods in place.

**NOTE:** These sheet metal screws fit tightly into holes in the cross rods. Rub soap on the screw threads before attaching them. You can also use a ratcheting screwdriver or power screwdriver. Do not use a power drill with a screwdriver bit, as this can damage the cross supports.

10. Using two #10 x 1-3/4" Phillips pan head sheet metal screws, attach the cross rods to the remaining rod support. Tighten both screws firmly.

11. Go back to the first rod support and tighten both sheet metal screws firmly. The trap is now ready for use.

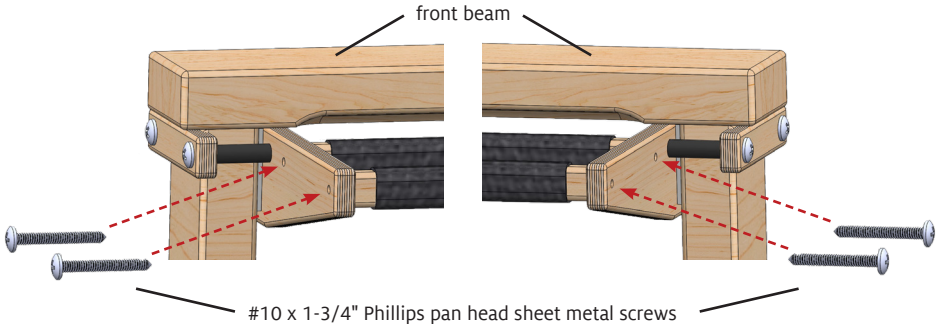


FIGURE 5: ATTACH CROSS RODS

## REMOVING & REPOSITIONING THE TRAP

To reposition or remove the trap, you'll release both clamp blocks.\* It's easiest to do this while a helper supports the cross braces and cloth sleeve. We do not recommend removing the screws that hold the cross rods and cloth sleeve in place.

To raise or lower the trap, loosen but do not remove the screws in the clamp blocks. Set the trap at your preferred height and tighten all four screws.

To remove the trap, remove the 1/4-20 x 2-1/4" Phillips truss head machine screw and spacer from hole B of both rod supports, so the clamp blocks swing down. Pull the trap forward off the loom. (Reattach the machine screws and spacers so the hardware doesn't get lost.) Reverse these steps to reinstall the trap. ❏

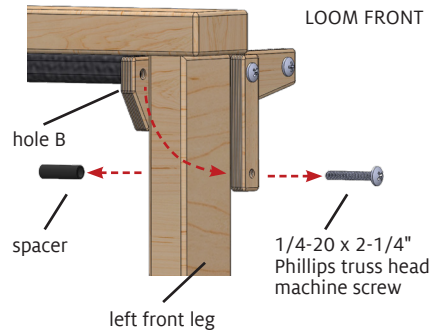


FIGURE 6: RELEASE THE CLAMP BLOCK

\* If your loom is unwarped, you can lift off the front beam to remove or reinstall the assembled trap. Make certain that the clamp blocks are not fully tightened and slide them over the front legs. Then set the trap at your preferred height and tighten the clamp blocks.