

BABY BLUE SQUARED

Designed and woven by Constance Hall

Difficulty: Easy

Size: 22" x 30"

Yarn: Classic Elite Seedling Cotton, 1 skein of each color: 4592 Horizon, 4560 Surf, 4593 Steel Blue, 4546 Glacier.

Other notions, equipment or tools: Tapestry needle, sharp needle with big eye, 1 yard pre-washed flannel with matching sewing thread.

Overview: This lightweight spring baby blanket is made from 48 squares out of the Seedling yarn. These squares were woven in a twill pattern on the Zoom Loom, although a plain weave would work just as well. After sewing the squares together, attach a flannel back to the blanket, tying a yarn at each join. The method I used to do the tie catches where all four corners of the squares come together to join. The flannel backing is folded over the front edges of the squares and is sewn down by machine so that the stitching attaches the front to the backing.

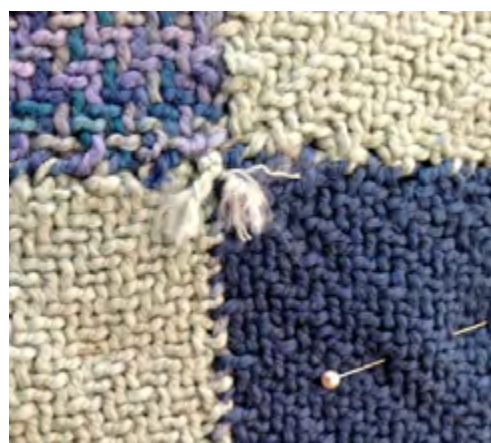
Weaving: Weave 12 squares in each of the 4 colors. This weight of yarn works well if woven in twill. If woven in plain weave, make sure to leave plenty of slack in the yarn as you warp the Zoom Loom. Cotton has little stretch. When weaving with non-stretchy yarn, it helps to lay the yarn in very loosely when warping the three layers. It will tighten up considerably when weaving. Twill instructions are on the next page.

Assembly: Lay out the squares so that the colors vary from square to square. Two squares of the same yarn should not be side by side. Sew the squares together into rows, 6 squares per row, using the tail from each square to sew to it to the next one. Sew all the seams on one side of the blanket, which will be the "wrong" side. Sew the rows together keeping the seams on the wrong side.

Wash the blanket gently in warm water. Lay it out flat, straighten the edges, and let it dry. Wash the flannel in the washing machine and dry in the clothes dryer. Iron the flannel and gently press the blanket.

Finishing: Lay the blanket right side up on top of the flannel. Smooth both very flat and square up the blanket by making sure all the edges are straight. The flannel should extend past the edge of the blanket by 1 inch. Mark and trim the flannel if it is bigger. Pin the blanket and flannel in many places to hold the two layers together. If desired, a layer of quilt batting could be placed between the blanket front and the flannel backing.

Make tacks to hold the squares and flannel backing together. Using the darkest color yarn, thread the big eye needle. At each place where 4 squares come together, put the needle down catching one corner, come up with the needle and yarn diagonally to where it went in, go down and up in the other two corners and bring the yarn through the loop left on the surface. Pull tightly but not tight enough to pucker the surface



MAKE TACKS TO HOLD SQUARES AND BACKING TOGETHER

and tie a square knot in the yarn. Cut the ends about 1 inch long. Fray the ends of the yarn a bit. (See the [video](#) on the Schacht Youtube channel - youtube.com/user/schachtspindle.)

Fold the raw edge of the flannel over 1/4" and fold once again to cover the edge of the blanket on all four sides, pinning as you go. Sew close to the folded edge of the flannel.

This blanket may be gently machine washed and dried although hand washing would be preferred. The yarn and backing may still shrink some and at a different rate.



WEAVING TWILL ON THE ZOOM LOOM

Follow the directions in the Zoom Loom instruction book for winding on layer 1.

At corner 2, go around the single pin to the left of your yarn, and wind on another layer. The lines of yarn in this layer should lie between the lines of yarn in the first layer.

You're going to weave 32 rows (the equivalent of two layers) instead of 16 rows. Instead of wrapping the yarn five times around the pins to measure your weft, wrap it ten times.

In these directions, [] indicates a repeating sequence.

Weave as follows:

Row 1: plain weave

Row 2: [O2, U2] across, ending with U1

Row 3: O1, U1, [O2, U2] across, ending with O1

Row 4: [U2, O2] across, ending with O1

Row 5: U1, O1, [U2, O2] across, ending with U1

Row 6: weave as row 2

Row 7: weave as row 3

Row 8: weave as row 4

Row 9: weave as row 5

Row 10: weave as row 2

Row 11: weave as row 3

Row 12: weave as row 4

Row 13: weave as row 5

Row 14: weave as row 2

Row 15: weave as row 3

Row 16: weave as row 4

Row 17: weave as row 5

Row 18: weave as row 2

Row 19: weave as row 3

Row 20: weave as row 4

Row 21: weave as row 5

Row 22: weave as row 2

Row 23: weave as row 3

Row 24: weave as row 4

Row 25: weave as row 5

Row 26: weave as row 2

Row 27: weave as row 3

Row 28: weave as row 4

Row 29: weave as row 5

Row 30: weave as row 2

Row 31: weave as row 3

Row 32: U1, [O2, U2] across

