

SAVI'S BLANKIE

Designed and woven by John Mullarkey

I made this Blankie for my grandniece's fourth birthday. She actually asked me to make it for her at Christmas. She wanted something purple. Hope your wee ones find as much enjoyment as Savi will from hers.

Difficulty rating: Intermediate

Finished Size: 30" x 26"

Yarn: Regia Hand-Dye Effect. One skein in each of these colors, 06558 (Red-Purple), 06553 (light purple), 06554 (greens).

Notions: Tapestry needle, size E crochet hook.

Number of squares: 74 total, including 10 patterned.

Weaving: The body of the Blankie was woven with the yarn doubled to give it extra durability. Weave 10 plain weave squares in the light purple and 10 plain weave squares in the greens. Weave 10 patterned squares in the red-purple.

The ruffled edge is woven with single strands of yarn. Weave 22 squares with the greens, and 22 squares with the light purple.

Pattern: When creating this pattern, you will make all of the designs on just the rows that you weave with your needle. When you begin a row, do not count the loop at the edge. Your needle will go over the loop (don't count this) and then under the first warp thread (start counting now).

For this pattern, your needle goes under three warp threads to create the pattern floats. These will appear vertically in your weaving. If you look at the underneath of your swatch, you'll see horizontal floats. You can use the pattern either vertically or horizontally (as for this project).

Raised Square Pattern (diagram on next page)

Abbreviations:

O = Over (a number of threads)

U = Under (a number of threads)

W = Weave plain weave (for a number of threads)

Row 1: Plain weave

Row 2: Plain weave

Row 3: Plain weave

Row 4: W6, U3, O1, U3, O1, U3, O1, U3, O1, U3, W6

Row 5: W8, U3, O1, U3, O1, U3, O1, U3, W8

Row 6: same as row 4

Row 7: same as row 5

Row 8: same as row 4

Row 9: same as row 5

Row 10: same as row 4

Row 11: same as row 5

Row 12: same as row 4

Row 13: Plain weave

Row 14: Plain weave

Row 15: Plain weave

Row 16: Plain weave

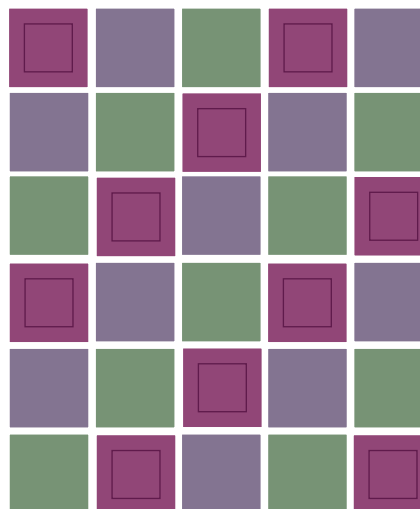


Finishing: Sew in all ends. Hand wash and lay flat to dry.

Assembly: Arrange the squares so that the colors create diagonal lines across the Blankie (see diagram below). Join the squares of the body with the red-purple with single crochet using Size E crochet hook, or hook size appropriate for your crochet. Joins should not buckle or gather.

Join the squares for the ruffle into one long strip using a mattress stitch to join the squares. Use either the greens or the light purple for the joining and alternate every other square with greens or light purple. Join beginning to end to create a large loop.

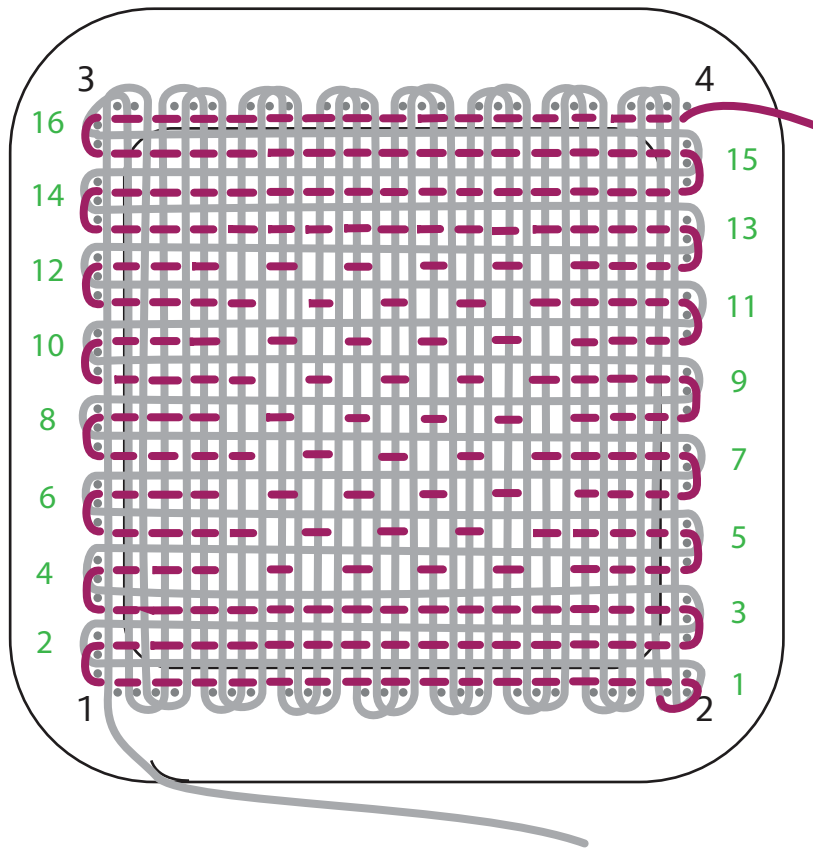
Join the ruffle to the body by single crochet with red-purple color. Match one double bump group of the ruffle to one loop of a double bump group of the body. Each edge square of the body should have two ruffle squares joined to it.



SQUARE LAYOUT



Copyright © 2014 Schacht Spindle Company, Inc.
schachtspindle.com



RAISED SQUARE PATTERN



SAVI'S BLANKIE

