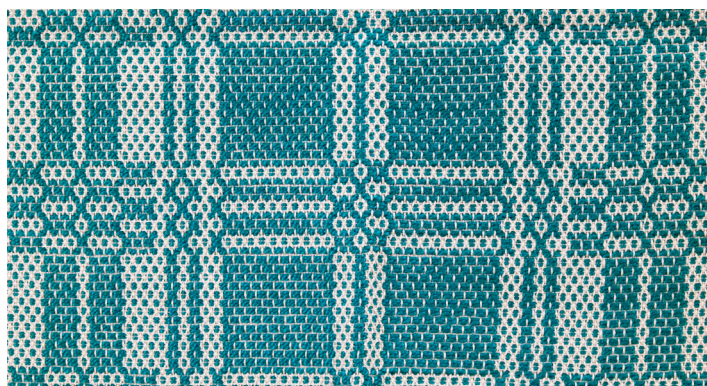
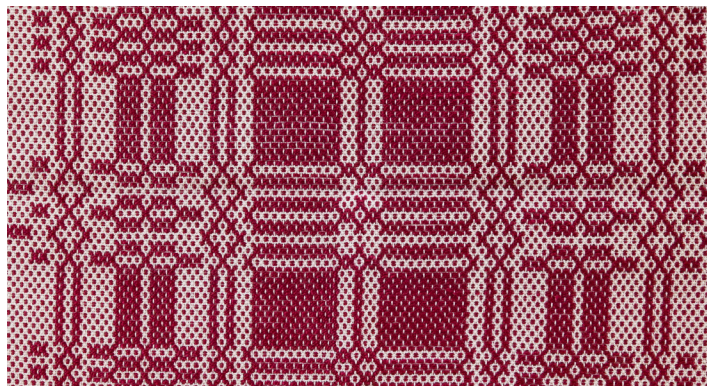


SUMMERTIME KITCHEN TOWELS

Designed and woven by Anu Bhatia

People ask, "Why kitchen towels?" As a weaver, I love to learn new weave structures and experiment with setts, yarns, and colors. If I warp my loom for a series of kitchen towels, I can explore new weave structures in variety of colors, setts, and/or textures on a smaller scale. The end results are functional items for me or for someone else! In this series of towels, I explored summer & winter in two color combinations and two yarn weights, adding four lovely towels to my kitchen. I would like to thank [Yarn Barn of Kansas](#) for providing quality yarns for this project.

The name summer & winter comes from the distinctly light and dark sides of the fabric. It is a tied unit weave where supplementary weft floats are tied down with tabby.



PROJECT SPECS

MATERIALS

- 10/2 perle cotton (4200 yd/lb) in Natural: 1700 yds for warp and 1100 yds for tabby weft, plus a few yards for hemming towels
- 5/2 perle cotton (2,100 yd/lb) in #32 Lipstick and #135 Jade Green, 300 yds of each color for pattern weft
- 3/2 perle cotton (1,260 yd/lb) in #32 Lipstick and #135 Jade Green, 250 yds of each color for pattern weft

EQUIPMENT

- 6+ shaft loom with at least a 20" weaving width and 10 treadles—I used my 8-shaft Mighty Wolf
- 10-dent reed
- 2 shuttles
- 2 bobbins
- Temple or stretcher clips (optional but recommended)
- sewing machine
- sewing needle

WEAVE STRUCTURE: summer & winter

WARP LENGTH: 4-1/2 yds (33" for each towel including hem allowances, 8" for take-up, 25" loom waste)

TOTAL WARP ENDS: 374 ends in 10/2 cotton including two floating selvages

EPI: 20 (2 ends/dent in a 10-dent reed)

PPI: 16 pattern picks + 16 tabby picks for 5/2 perle cotton; 14 pattern picks + 14 tabby picks for 3/2 perle cotton

WIDTH IN THE REED: 18.6"

WOVEN LENGTH: approximately 32" to 33" for each towel, measured under tension on the loom

FINISHED SIZE: 30" x 16-1/4" after wet finishing and before hemming



Find out more at [schachtspindle.com](#)
Schacht Spindle Company 6101 Ben Place Boulder, CO 80301
p. 303.442.3212

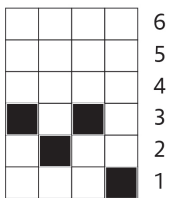
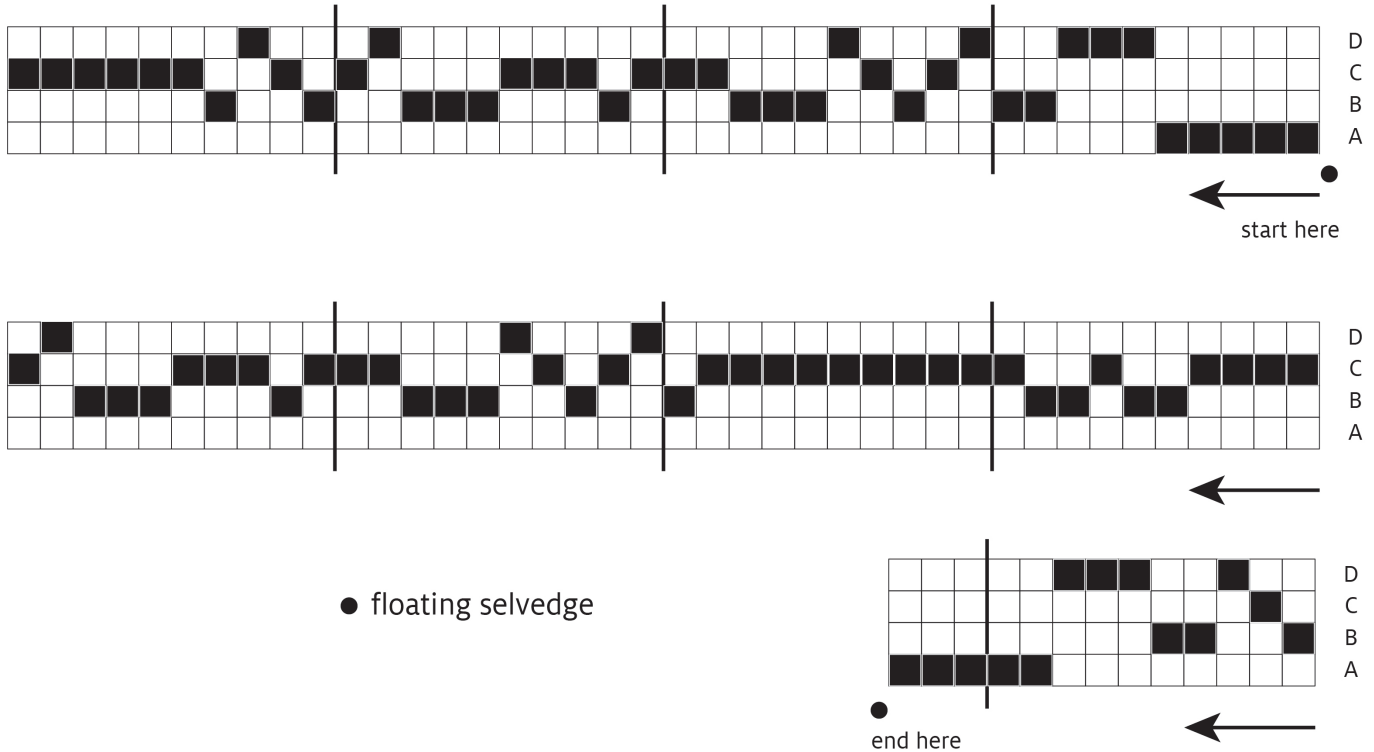
© 2022 Schacht Spindle Company, Inc.

WARPING

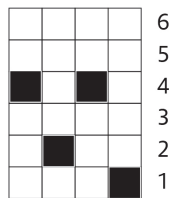
Wind a warp of 372 ends plus two floating selvages 4-1/2 yds long. Use your preferred method to warp the loom, following the profile threading and block drafts below.* The threading profile draft contains 93 blocks; they are marked off in groups of 10 with vertical lines to help you keep your place. I hung the floating selvages over the back beam using weights on either side.

*When you see Block A indicated on the profile threading, thread 4 ends according to the thread-by-thread draft for Block A, and so on. Threading for this warp begins with 5 repeats of Block A (20 ends total), then 3 repeats of Block D (12 ends), then 2 repeats of Block C (8 ends). See "Warping & Weaving from Profile Drafts" on schachtspindle.com for more information.

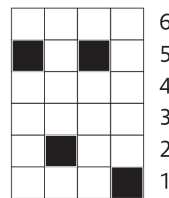
Profile Threading



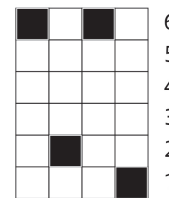
Block A: 1-3-2-3



Block B: 1-4-2-4



Block C: 1-5-2-5



Block D: 1-6-2-6

TREADLING FOR SUMMER & WINTER

Summer & winter creates a fabric that has two distinct sides. Either side can be woven as face side by keeping the block floats up or down while weaving that block. In the tie-up at right, the treadled block weaves the background and floats show in rest of the blocks. For example: While weaving Block A (treadles A1 & A2), the threads on shaft 3 are lifted, so Blocks B, C, and D will be dark on the "front" side and Block A will be light.

Tabby (a or b) alternates with each pattern pick to tie down the floats over 3-end units. Always end OR begin a pattern block with a pick of **tabby b**.

TABBY TREADLES A & B: Two tabby treadles can be tied either on the leftmost or rightmost treadles according to your preference (I placed mine on the left).

For Block A on treadles 3 & 4, work as follows:

1. **Tabby b.**
2. Pattern pick A1, followed by **tabby a.**
3. Pattern pick A2, followed by **tabby b.**
4. Pattern pick A2, followed by **tabby a.**
5. Pattern pick A1.

The above sequence completes one unit block. If the profile draft calls for repeats of the block, repeat steps 1 through 5 as many times as needed.

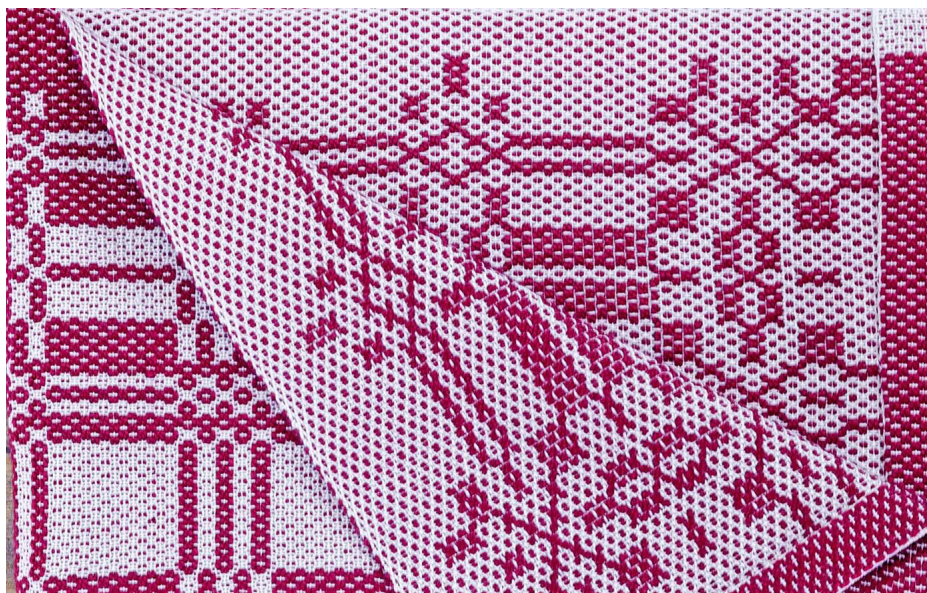
Block B on treadles 5 & 6: To work block B, weave [B1-B2-B2-B1] with tabby between pattern picks. If the profile draft calls for repeats of the block, repeat as many times as needed.

Block C on treadles 7 & 8: To work block C, weave [C1-C2-C2-C1] with tabby between pattern picks. If the profile draft calls for repeats of the block, repeat as many times as needed.

Block D on treadles 9 & 10: To work block D, weave [D1-D2-D2-D1] with tabby between pattern picks. If the profile draft calls for repeats of the block, repeat as many times as needed.

Tie-up

a	b	A1	A2	B1	B2	C1	C2	D1	D2
		■						■	■
		■					■	■	
		■			■	■			
		■	■						
■				■		■		■	
■			■		■		■		



WEAVING THE TOWELS

I began with the 5/2 towels, first in Lipstick and then in Jade. Then I worked the 3/2 towels in Lipstick and then in Jade.

For each towel, work as follows:

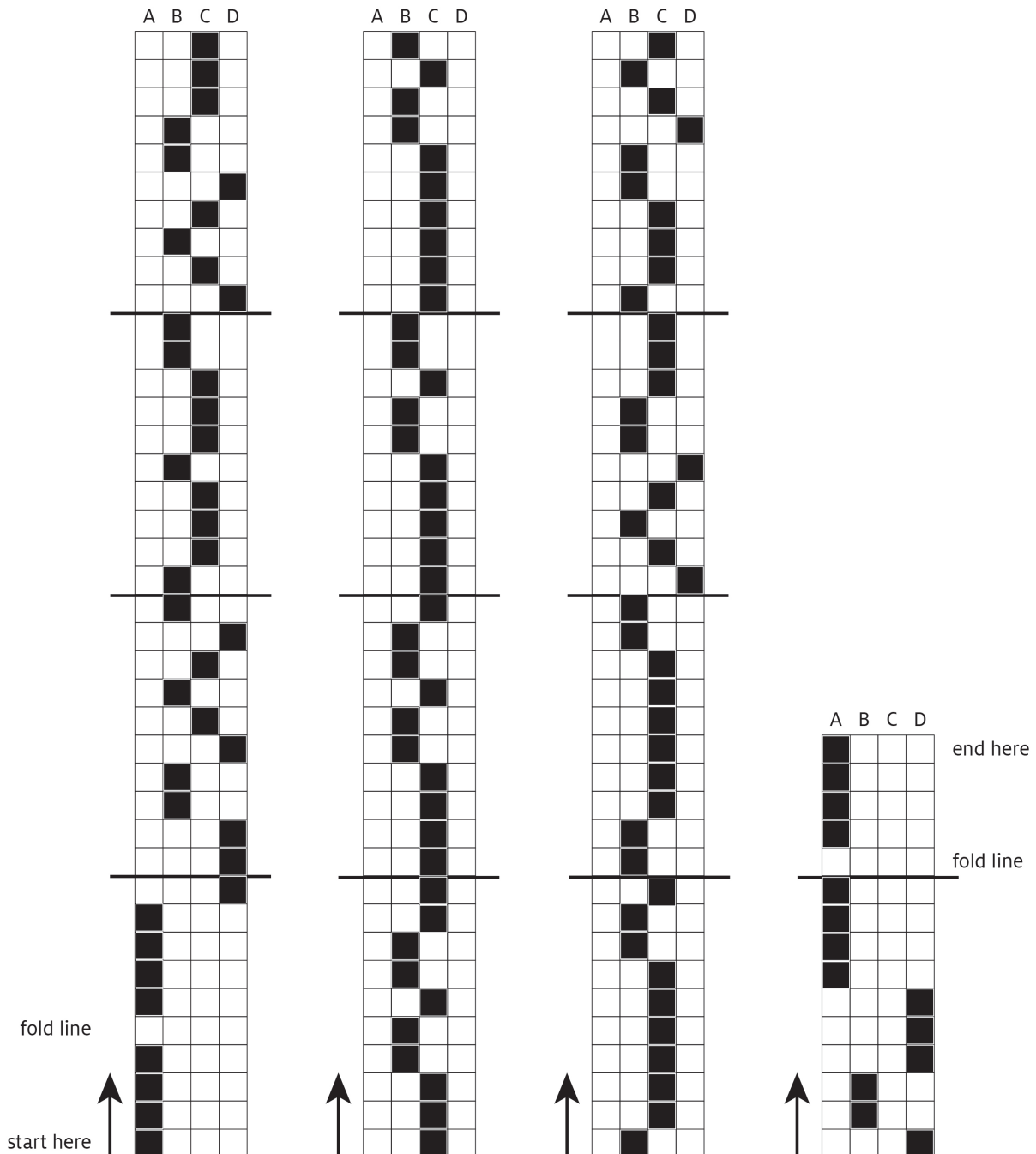
1. Weave 10 picks of plain weave with tabby weft, starting with **tabby a** and ending with **tabby b**. These picks are not shown on the profile draft.
2. Weave as marked on the profile draft for 4 blocks of A (in 5/2 cotton) or 3 blocks of A (in 3/2 cotton; see page 5). Follow the block repeats given above, alternating each pattern pick with a tabby pick. Always start the block on **tabby b**.

3. In the blank row of the profile draft, weave a fold line for the hem: work 4 picks of tabby weft, starting with **tabby a** and ending with **tabby b**.

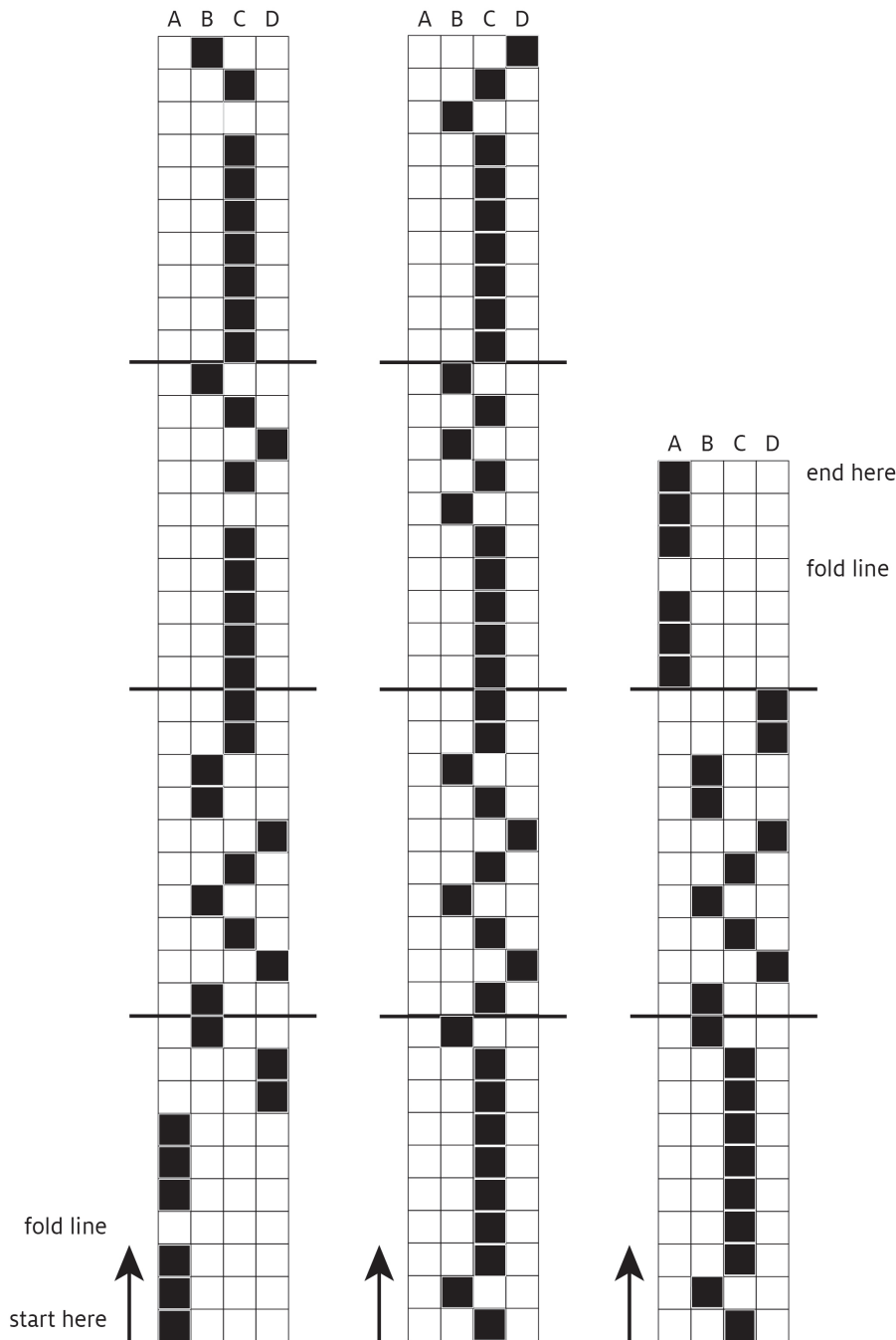
4. Weave following the profile draft, beating firmly and evenly. Work another fold line for the hem. My woven fabric measured 32" to 33" for each towel, measured under tension.

5. Weave 10 picks of plain weave with tabby weft.

Profile Treading, 5/2 Cotton



Profile Treading, 3/2 Cotton



FINISHING

Remove the fabric from the loom but do not cut apart the towels. Secure cut edges with a narrow zigzag stitch on your sewing machine. Wash the fabric in warm water and dry lightly in the dryer. Cut the four towels apart. Press each towel with a hot iron to remove wrinkles. Press hem folds: with the light side of the fabric on top, fold over the 10 picks of plain weave and press. Fold again at the fold line to enclose the plain weave and press—the patterning of Block A will be visible, as shown below. Hand hem with 10/2 natural cotton. It looks nice to have a patterned fold.

All yarns for this project were provided by Yarn Barn of Kansas.

RESOURCES

[Ludden Hankens, Melissa. "Summer and Winter" post on schachtspindle.com](#)

van der Hoogt, Madelyn. *The Complete Book of Drafting for Handweavers*. Shuttle Craft Books. 2017.

