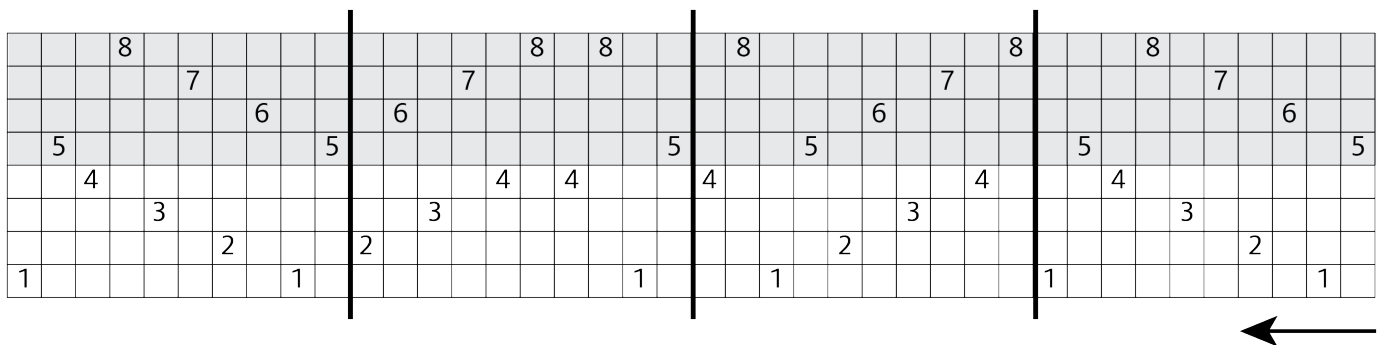
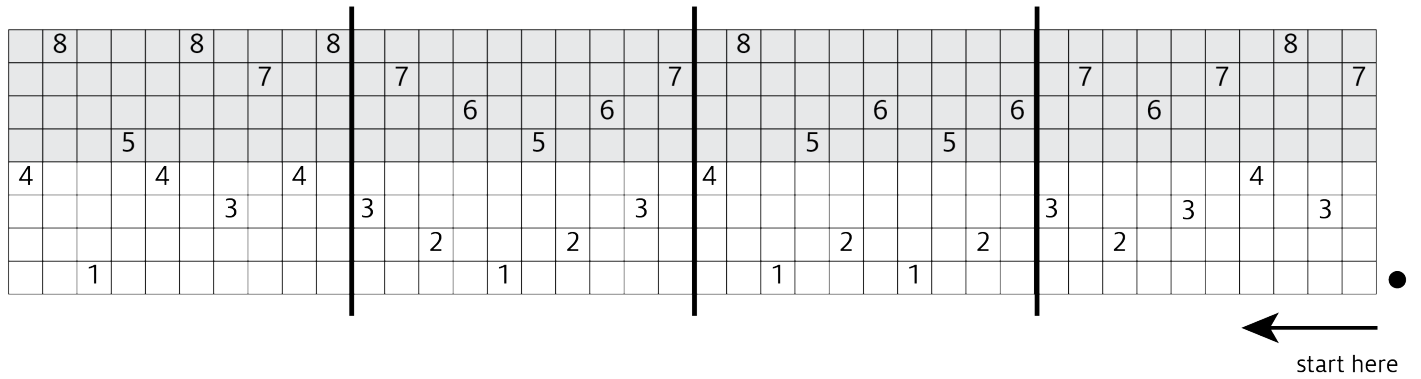


SUBTLE STAR OVERSHOT DOUBLEWEAVE BLANKET

Designed and woven by Rachel Simmons

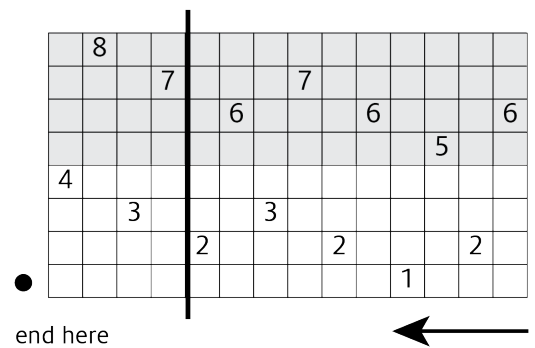
Threading

94-end repeat, repeated 6 times



● floating selvedge

Gray boxes in the weaving draft indicate shafts and treadles for the bottom layer.



Gray boxes in the weaving draft indicate shafts and treadles for the bottom layer.

Floating Selvedges

1	over both
2	under both
3	between
4	between

Tie-up

1	2	3	4	5	6	7	8	9	10
				8			8	8	
						7	7		7
					6	6		6	
				5	5				5
			4	4	4	4	4	4	4
		3		3	3	3	3	3	3
	2			2	2	2	2	2	2
1				1	1	1	1	1	1

Treadling

rows 1-40

1		4							
				7					
	2	4							
									10
				7					
1		4							9
1		3							
1		4							
				7					
	2	4							
									10
							8		
1	2								9
1		3							
	2	3							
				5					
	2	4							
									10
							6		
		3	4						
									9
1		3							
1		4							
				7					
	2	4							
									10
							7		
1		4							9
1		3							
	3	4							
				6					
	2	4							
									10
							5		
	2	3							
									9
1		3							

- 4b ←
- 3b →
- 4a ←
- 3a →
- 2b ←
- 1b →
- 2a ←
- 1a →

start here ↑

rows 41-80

1		4							
				7					
	2	4							
									10
							8		
1	2								9
1		3							
1	2								
							8		
	2	4							
									10
							8		
1	2								9
1		3							
	2	3							
				5					
	2	4							
									10
							5		
	2	3							
									9
1		3							
	2	3							
				5					
	2	4							
									10
							6		
		3	4						
									9
1		3							
	3	4							
				6					
	2	4							
									10
							6		
		3	4						
									9
1		3							

↑

rows 81-120

1	2								
							8		
	2	4							
									10
							8		
1	2								9
1		3							
1	2								
							8		
	2	4							
									10
							7		
1		4							9
1		3							
	3	4							
				6					
	2	4							
									10
							5		
	2	3							
									9
1		3							
1	2								
							8		
	2	4							
									10
							8		
1	2								9
1		3							
	2	3							
				5					
	2	4							
									10
							6		
		3	4						
									9
1		3							

↑

rows 121-160

1	2								
						8			
	2		4						
								10	
					7				
1			4						
								9	
1		3							
<hr/>									
1			4						
					7				
	2		4						
								10	
					7				
1			4						
								9	
1		3							



rows 161-184

		3	4						
					6				
	2		4						
								10	
					6				
		3	4						
								9	
1		3							
<hr/>									
		3	4						
					6				
	2		4						
								10	
					5				
	2	3							
								9	
1		3							
<hr/>									
		2	3						
					5				
	2		4						
								10	
					5				
	2	3							
								9	
1		3							

	2	3							
					5				
	2		4						
								10	
					6				
		3	4						
								9	
1		3							
<hr/>									
1			4						
					7				
	2		4						
								10	
					7				
1			4						
								9	
1		3							
<hr/>									
		3	4						
					6				
	2		4						
								10	
					5				
	2	3							
								9	
1		3							

end
here

