

SAMPLING FOR STRUCTURE & WEFT

by Stephanie Flynn Sokolov

To design the [Beachcomber Shawl](#), I played around with different weave structures and yarns. My goal was to find a yarn from my stash that complemented the Colorado River Ombré warp and produced a fabric with a supple hand in a visually pleasing structure.

The sampling began. My favorite weave structure was leno (Figure 1B), but it is extremely time-consuming and tedious to weave. After producing several more samples, I settled on evenly spaced Brooks Bouquet with 5 picks in each bouquet bundle.

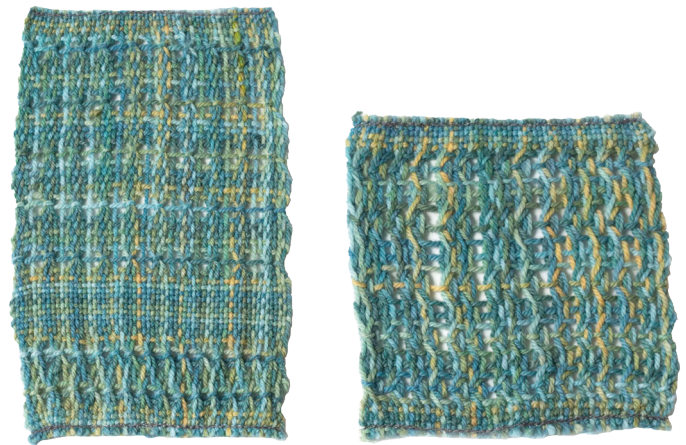
For colors, I needed something similar in value to the warp. I placed some good candidates around the warp yarn, photographing in color and then adjusting it to black and white to narrow down the choices.

Next, I wove three samples with different wefts (Figure 2). First, I tried a taupe DK yarn called Bella Lino. I thought its lighter fibers could nicely offset the wool in the warp for a summer shawl. But the yarn was a little thicker than I wanted and the hand was a little too stiff.

Then I found a blue-gray fingering yarn, very similar to Malabrigo Mechita, and wove a sample. This one looked great when I took it off the loom, but washing fullled the weft more than I expected and produced a much less fluid fabric.

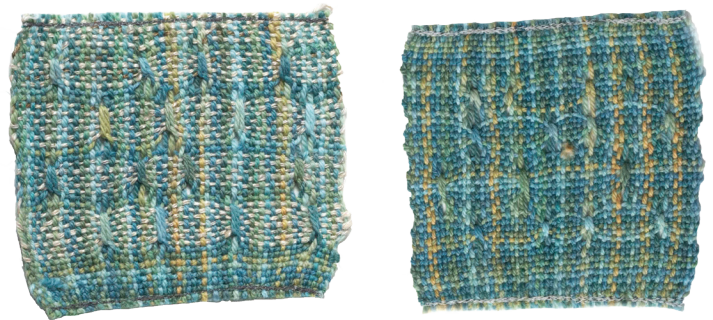
Like Goldilocks, I tried again and this time the yarn was just right. A Hue Loco fingering yarn in my stash, space-dyed in blue-greens and golden browns, was a little lighter weight than the warp but matched the fiber content. When I was weaving, the picks seemed too far apart, but once I washed and lightly pressed the swatch, I had a wonderfully light and flowing fabric.

This is why designers sample—all the way through finishing.



A

B



C

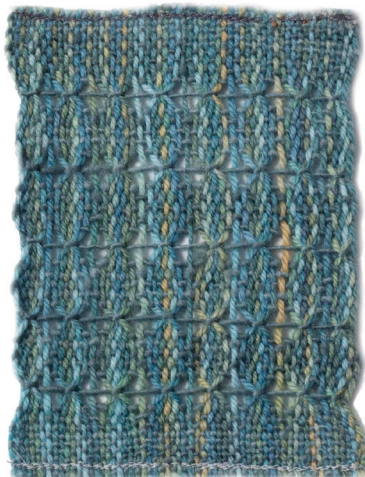
D

FIGURE 1: SAMPLING WEAVE STRUCTURES

A: Leno (bottom) and Brooks Bouquet (top). B: Leno. C and D: Danish medallion.



A



B



C

FIGURE 2: SAMPLING WEFT YARNS

A: Classic Elite Yarns Bella Lino; DK weight, 58% Linen, 26% Viscose, 16% Cotton.

B: Plain & Fancy Sheep & Wool Co. Fingering, 100% wool.

C: Hue Loco Merino Sock 80/20, fingering, weight, 80% superwash merino, 20% nylon.



Find out more at schachtspindle.com
Schacht Spindle Company 6101 Ben Place Boulder, CO 80301
p. 303.442.3212

© 2020 Schacht Spindle Company, Inc.