

# PATCH THE PUPPY

Designed and made by Deborah Bagley

Yarnovations.com

A dog is man's best friend, and this stuffed dog in a sweater is no exception! Weave Zoom Loom squares in your favorite colors, then assemble them into a pup who never leaves your side. Remember to insert the safety eyes and safety nose before you sew the dog closed!



## MATERIALS

- Red Heart Soft, 100% acrylic, medium worsted weight: 120 yards of main color and 70 yards of accent color—used #4601 Off White and #3720 Lavender for the pup with arms and legs, #4601 Off White and #9520 Seafoam for the sitting pup
- 20 mm safety eyes, 20 mm safety nose
- 2" x 2" felt scrap in the accent color
- 12" x 12" fabric
- stuffing

## EQUIPMENT

- Zoom Loom and weaving needle
- fork or beater
- tapestry needle
- sewing pins or clips
- sewing needle and thread to match fabric

## PROJECT SPECS

**Finished size:** body measures about 10" x 8" when assembled and stuffed, excluding ears and limbs

**Weave structure:** plain weave



If you print this PDF, print in color—illustrations won't be legible in black and white.



Find out more at [schachtspindle.com](http://schachtspindle.com)  
Schacht Spindle Company 6101 Ben Place Boulder, CO 80301  
p. 303.442.3212

## WEAVING

Following the Zoom Loom instructions, weave squares for your pup in plain weave:

- body and ears: 6 squares in the main color and 6 squares in the accent color
- legs and tail: 5 squares in the main color
- arms/sleeves : 2 squares in the main color and 2 squares in the accent color

## ASSEMBLY

Use whip stitch or double overcast for all seams. Always sew with the yarn color that matches the square.

1. For the head, sew 2 main color squares into a 1 x 2 rectangle for the front. Make another 1 x 2 rectangle for the back.
2. For the sweater, sew 6 accent color squares into 2 x 3 rectangle.
3. Attach a 1 x 2 rectangle at each short edge of the 2 x 3 rectangle, as shown in Figure 1. The body rectangle is now 2 x 5.
4. Fold the 2 x 5 rectangle in half, right sides together, into a 2 x 2.5 rectangle—see Figure 1. Clip or pin into place, matching the main color squares to each other. Sew the two long edges of the rectangle, leaving the top edge (the top of the head) open. Sew with the yarn color that matches the squares. Turn the body right side out.
5. Cut a 2" diameter circle from felt. Snip a small hole in the center for the post of the safety eye. Insert the post of one eye through this hole.
6. Position the safety eyes and safety nose on the dog's face as shown in Figure 2. I placed the nose on the center seam, 1/4" above the sweater and the eyes 3/4" from the center seam, 1" above the sweater. When you like your dog's face, attach the safety eyes and nose.
7. Stuff the dog. Sew the top of the head with main color yarn.
8. Sew two ears: For each ear, fold a main color square in half. At one short edge, tuck in the corners about 1/2" to round the end. Sew the ear closed along both long edges and the rounded short edge.
9. Place the ears on the head as shown in Figure 4 on the next page. Attach the ears by sewing along the short edge through both layers of the square.
10. Sew two arms: For each arm, fold a main color square in half and sew on the long edge to make a tube. Then cinch one end of the tube closed: run the threaded tapestry needle through the loops on one short end. Pull the yarn tight. Stuff the arm very lightly.
11. Sew two sleeves: For each sleeve, fold an accent color square in half and sew on the long edge to make a tube.
12. Assemble two arms and sleeves: Insert the arm, cinched end out, halfway inside the sleeve. Tack the sleeve and arm together with accent yarn. Stuff the sleeve. Shape the paw by tying a length of accent yarn about 1" from the cinched end of the arm. Sew the arms to the body about 1" below the top of the sweater.

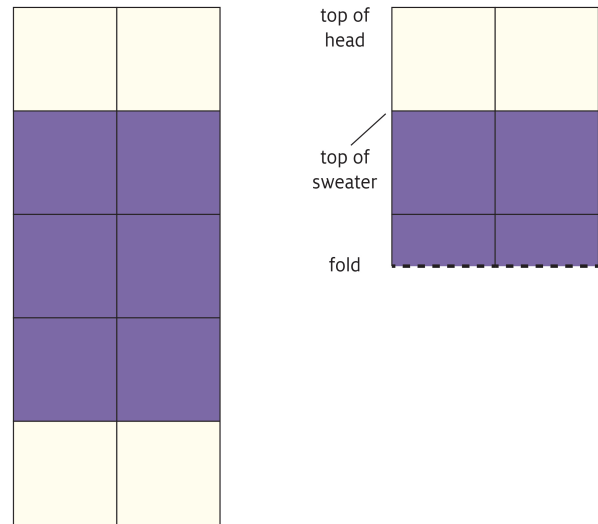


FIGURE 1: ASSEMBLING THE BODY

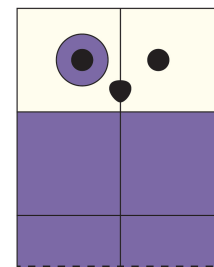


FIGURE 2: ADDING FACIAL FEATURES

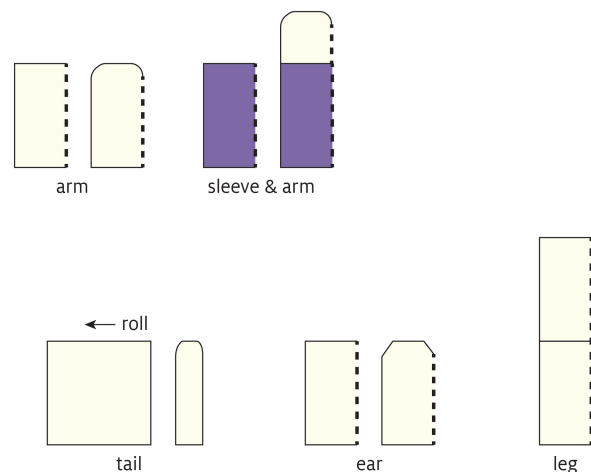
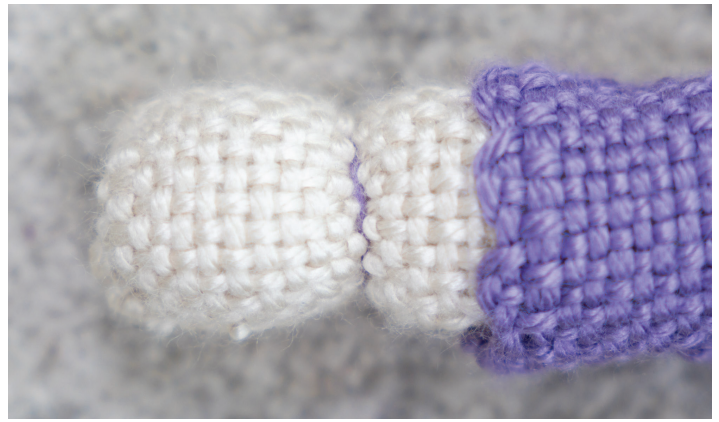


FIGURE 3: ASSEMBLING OTHER PARTS

13. Sew two legs: For each leg, sew 2 main color squares into a 1 x 2 rectangle. Fold the rectangle in half and sew along the long edge and one short edge to make a closed tube. Stuff the leg lightly. Attach legs to the body about 1" from the outside edges of the body. Embroider toes with accent yarn.
14. Sew the tail: Take a main color square and roll it up. Starting on one edge roll tightly. Sew along the final end to hold in place. Cinch one end of the tail. Attach the open end of the tail to the body where 4 accent color squares come together on the back.
15. Cut two inner ears from fabric strips measuring 2-1/4" x 4-1/4". Fold under a 1/4" seam allowance along all edges. Use a sewing needle and thread to sew strips to the woven ears, folding under more fabric at the curved end to match the curve of the ears.
16. Cut a heart from a 4-1/4" x 4-1/4" square of fabric—print the template on the next page. Snip along curved edges and fold under 1/4" all the way around for the hem allowance. Use a sewing needle and thread to sew the heart to the sweater, placing its point where 4 accent color squares come together on the front.
17. Weave in all ends. Wash the dog in cold water and tumble dry low.



### VARIATION

I made a second dog without attaching arms, legs, and a tail. Just skip steps 10 to 14 for this simpler version. Play with different options and have fun!

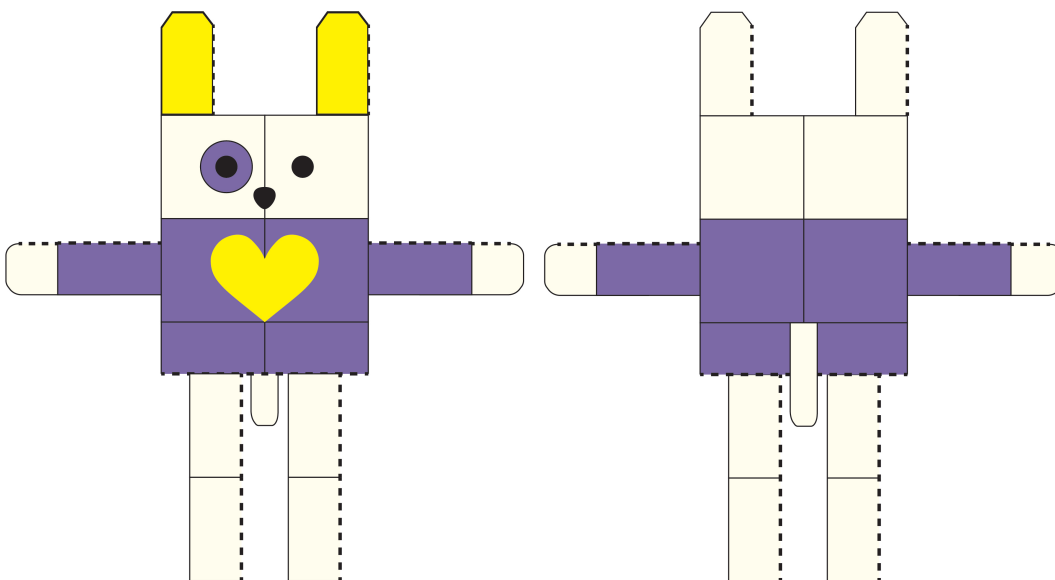
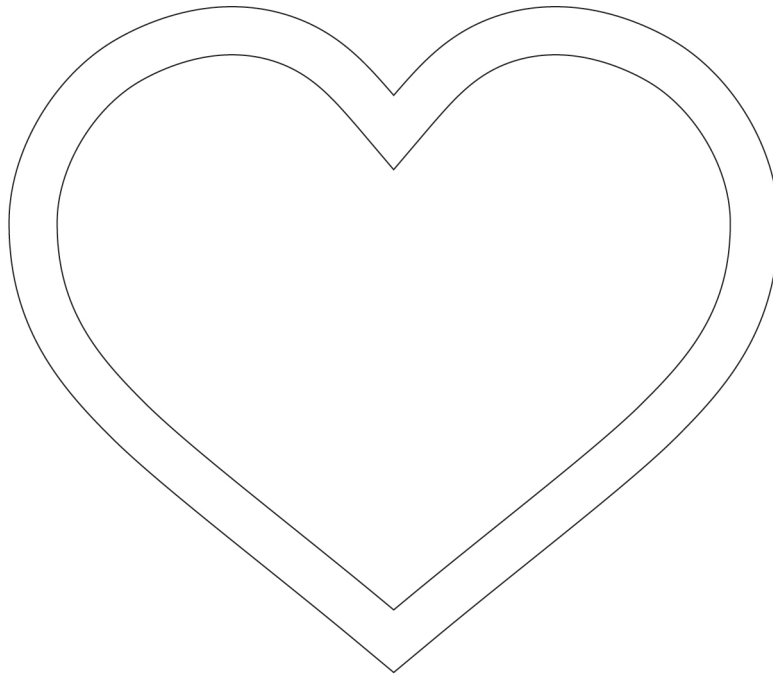


FIGURE 4: ASSEMBLED DOG, FRONT AND BACK



TEMPLATE FOR HEART

Print this page at 100% size. Cut out the heart along the outer edge. Clip curves and press under 1/4" for hem allowance.