



OUT WEST SHAWL

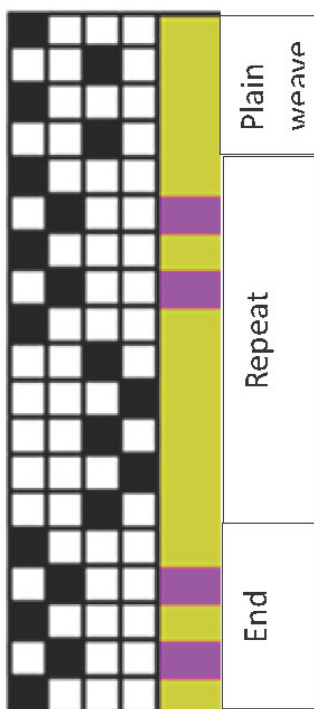
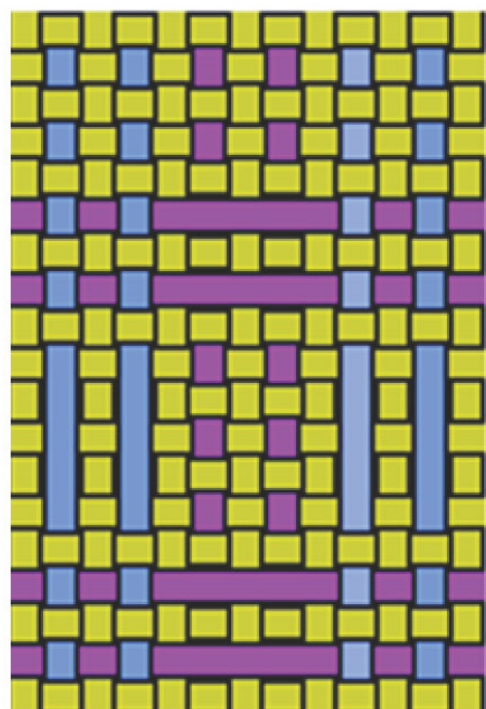
Designed and woven by Sara Goldenberg




		Repeat 18 times								End				
	Sand	1		1		1		1		1		1	75	
	Blue Steel and Safari**		1		1					1		1	38	
	Magnolia#					1		1					36	
Total Ends													149	

** Blue Steel and Safari are used together to form 1 working end

Magnolia is used double (38 working ends—76 actual ends)

End	Repeat
	



	Sand
	Blue Steel and Safari**
	Magnolia#

Pick-up Stick Pattern

*2 down 2 up; repeat from *
(all the Magnolia ends will be on the pick-up stick)

Step 1: Up

Step 2: Pick-up stick

Step 3: Up

Step 4: Pick-up stick

Step 5: Up

Step 6: Down

Step 7: Up and pick-up stick

Step 8: Down

Step 9: Up and pick-up stick

Step 10: Down

Repeat Steps 1–10 for pattern. To balance at the end of the weaving, end with Steps 1–5.



Find out more at schachtspindle.com
Schacht Spindle Company 6101 Ben Place Boulder, CO 80301
p. 303.442.3212

© 2020 Schacht Spindle Company, Inc.