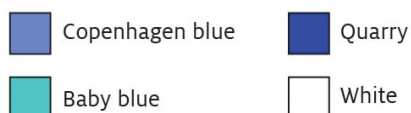
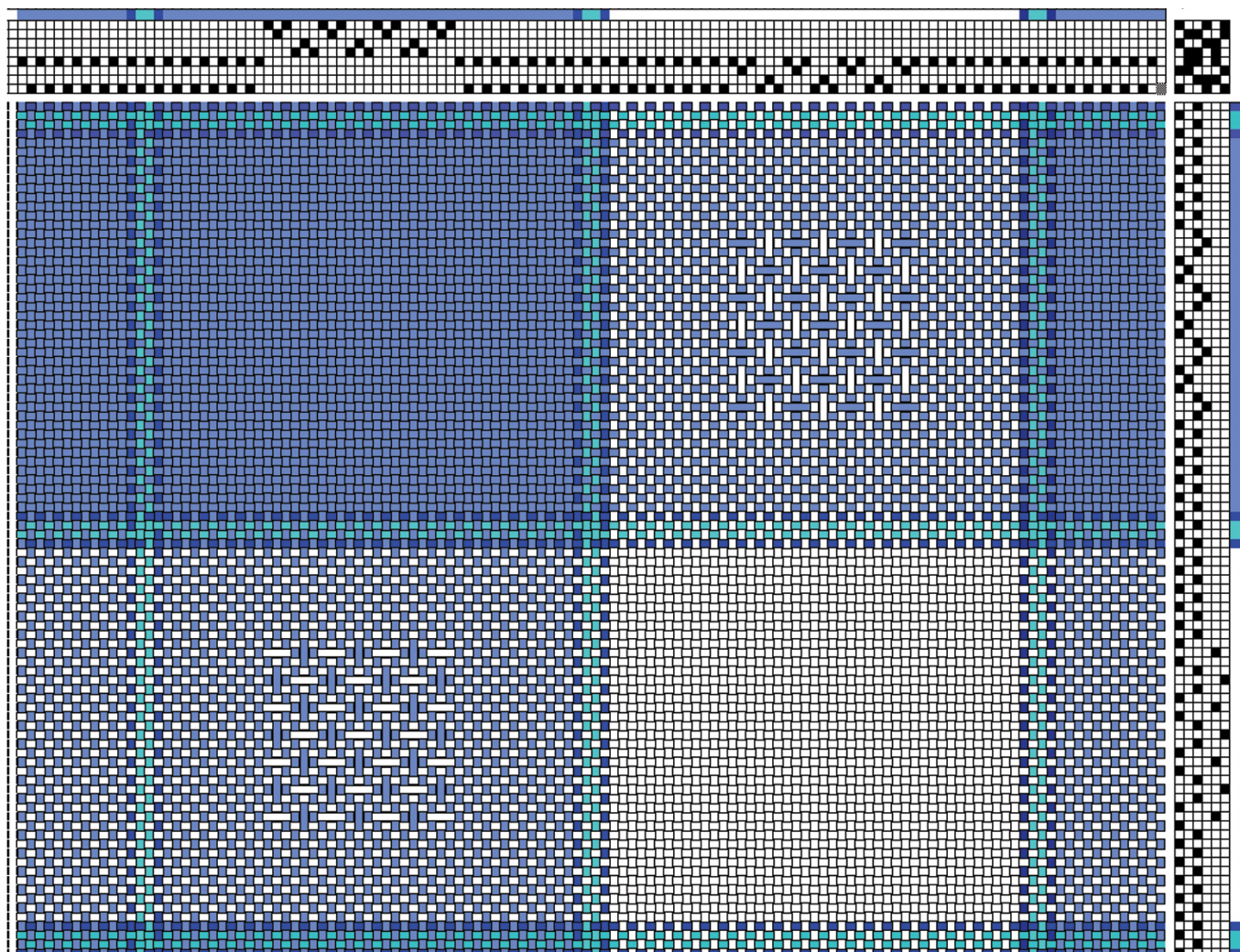


# LACE NAPKINS

Designed and woven by Jane Patrick



		repeat 4X												Color total
Copenhagen blue	12												12	204
White				45						45				225
Baby blue			2			2			2			2		20
Quarry*		1		1		1		1		1		1		*20
Total warp ends														469

\*Doubled = 40 ends total, 20 working ends



Find out more at [schachtspindle.com](http://schachtspindle.com)  
Schacht Spindle Company 6101 Ben Place Boulder, CO 80301  
p. 303.442.3212

© 2020 Schacht Spindle Company, Inc.