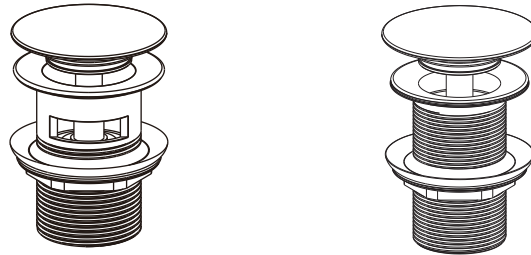


*Please carefully read all installation instructions.
Failure to comply with manufacturer's recommendations will void warranty.

The installation instruction apply for below products :

TW-300 Series



Important Information

It is recommended that this product is installed by a licensed plumber.

Please remove all packaging and check this product to ensure it has not been damaged or any parts are missing. Before installing please make sure this is the correct model and you have all the parts required for installation and usage. The printed picture is for reference only, this product is according to the actual goods.

Please check all the accessories are present.

Always read these instructions carefully and keep for future reference

Warranty Requirements

For full warranty terms and conditions please visit the warranty section of our website.
Please pay attention to the below. Failure to do so will void your warranty:

1. Do not use acid cleansers
2. Do not use abrasive cleansers
3. Do not use abrasive cloths

Maintenance & Care

To avoid damage it is necessary to consider the below guidelines.

1. To clean the Wall Shower surface use clean hot soapy water. ONLY use soft fabric cloths.
2. DO NOT use cleaning solutions that contain hydrochloric acid, formic acid, concentrated caustic soda, chlorine or acetic acid as they can cause considerable damage.
3. DO NOT use any coarse cleaning powders or brushed to clean the Wall Shower.
4. If there is irregular water pressure & water flow is reduced, please check if the spout is clean, if not brush the spout after vinegar soaking.

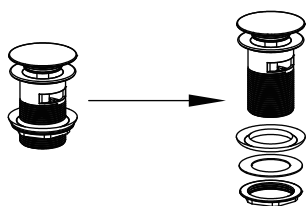
Installation

1. Remove the mounting nut.
2. Insert the wash basin that complies with the product and tighten the nut.
3. Connect the sewer pipe.

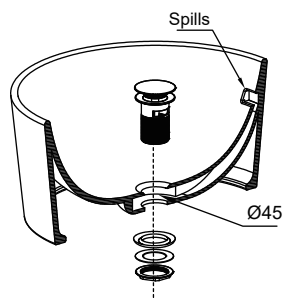
Installation steps

There are overflow holes

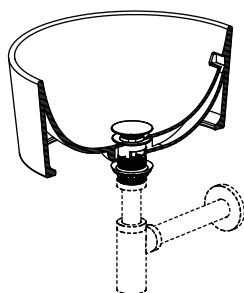
1.



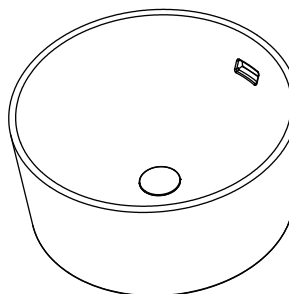
2.



3.



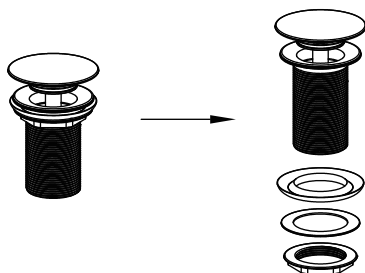
4.



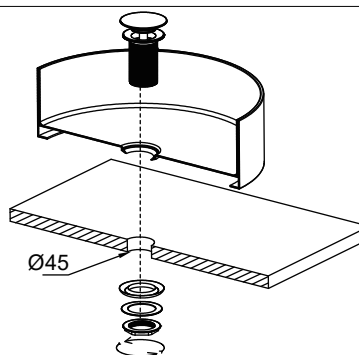
Installation steps

There is no overflow port

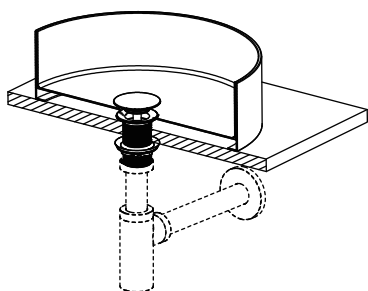
1.



2.



3.



4.

