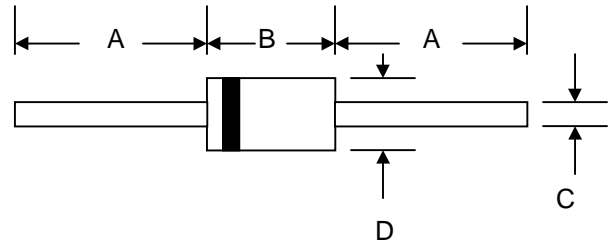


Features

- Schottky Barrier Chip
- Guard Ring Die Construction for Transient Protection
- High Current Capability
- Low Power Loss, High Efficiency
- High Surge Current Capability
- For Use in Low Voltage, High Frequency Inverters, Free Wheeling, and Polarity Protection Applications



Mechanical Data

- Case: Molded Plastic
- Terminals: Plated Leads Solderable per MIL-STD-202, Method 208
- Polarity: Cathode Band
- Weight: 0.40 grams (approx.)
- Mounting Position: Any
- Marking: Type Number

| DO-15 | | |
|----------------------|------|-------|
| Dim | Min | Max |
| A | 25.4 | — |
| B | 5.50 | 7.62 |
| C | 0.71 | 0.864 |
| D | 2.60 | 3.60 |
| All Dimensions in mm | | |

Maximum Ratings and Electrical Characteristics @ $T_A=25^\circ\text{C}$ unless otherwise specified

Single Phase, half wave, 60Hz, resistive or inductive load.
 For capacitive load, derate current by 20%.

| Characteristic | Symbol | SR220 | SR230 | SR240 | SR250 | SR260 | Unit |
|---|-----------------|-------------|-------|-------|-------|-------|------------------|
| Peak Repetitive Reverse Voltage | V_{RRM} | | | | | | V |
| Working Peak Reverse Voltage | V_{RWM} | 20 | 30 | 40 | 50 | 60 | |
| DC Blocking Voltage | V_R | | | | | | |
| RMS Reverse Voltage | $V_{R(RMS)}$ | 14 | 21 | 28 | 35 | 42 | V |
| Average Rectified Output Current (Note 1) @ $T_L = 100^\circ\text{C}$ | I_O | 2.0 | | | | | A |
| Non-Repetitive Peak Forward Surge Current 8.3ms Single half sine-wave superimposed on rated load (JEDEC Method) | I_{FSM} | 50 | | | | | A |
| Forward Voltage @ $I_F = 2.0\text{A}$ | V_{FM} | 0.50 | | | 0.70 | | V |
| Peak Reverse Current @ $T_A = 25^\circ\text{C}$ At Rated DC Blocking Voltage @ $T_A = 100^\circ\text{C}$ | I_{RM} | 0.5 10 | | | | | mA |
| Typical Junction Capacitance (Note 2) | C_j | 170 | | | 140 | | pF |
| Typical Thermal Resistance Junction to Lead | $R_{\theta JL}$ | 15 | | | | | K/W |
| Typical Thermal Resistance Junction to Ambient (Note 1) | $R_{\theta JA}$ | 50 | | | | | K/W |
| Operating and Storage Temperature Range | T_j, T_{STG} | -65 to +150 | | | | | $^\circ\text{C}$ |

Note: 1. Valid provided that leads are kept at ambient temperature at a distance of 9.5mm from the case.
 2. Measured at 1.0 MHz and applied reverse voltage of 4.0V D.C.

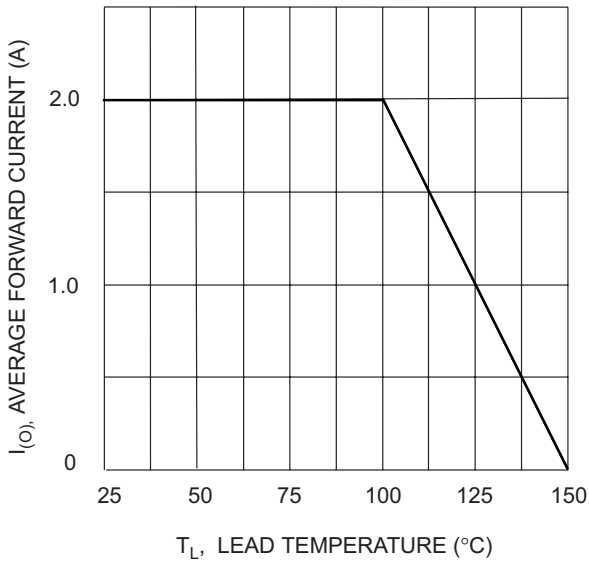


Fig. 1 Forward Current Derating Curve

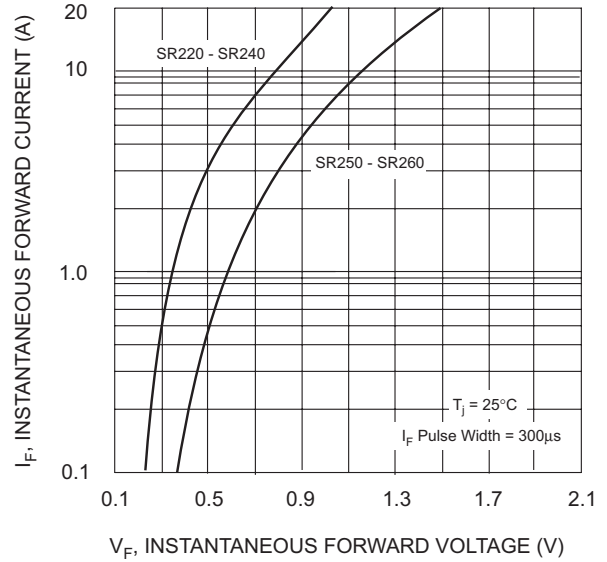


Fig. 2 Typical Forward Characteristics

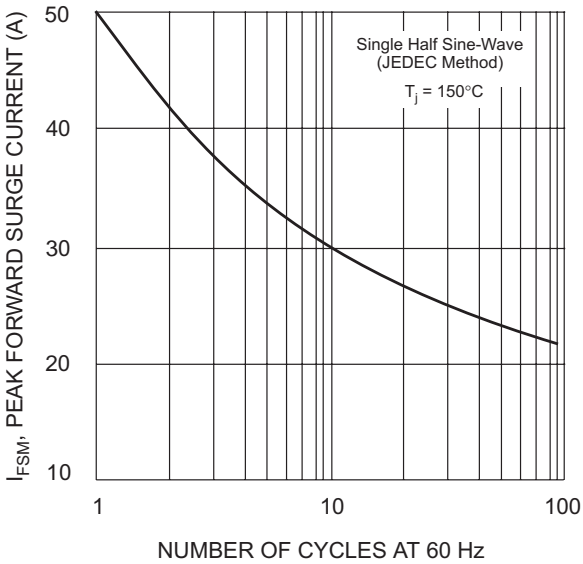


Fig. 3 Max Non-Repetitive Peak Fwd Surge Current

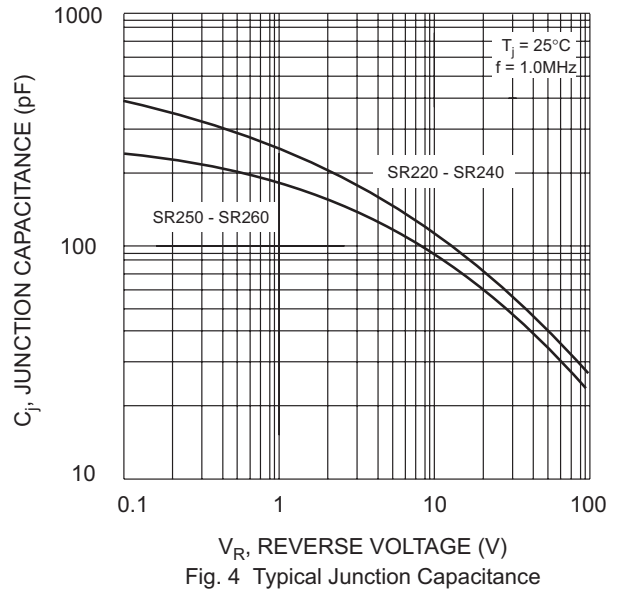


Fig. 4 Typical Junction Capacitance

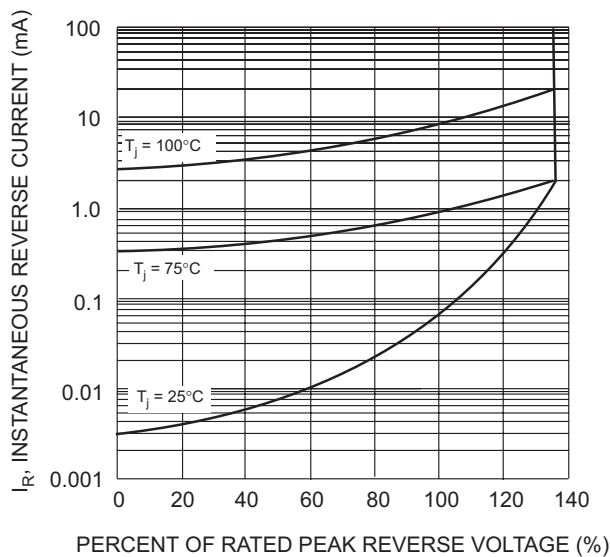


Fig. 5 Typical Reverse Characteristics

ORDERING INFORMATION

| Product No.♦ | Package Type | Shipping Quantity |
|-----------------|--------------|-------------------|
| SR220-T3 | DO-15 | 4000/Tape & Reel |
| SR220-TB | DO-15 | 3000/Tape & Box |
| SR220 | DO-15 | 1000 Units/Box |
| SR230-T3 | DO-15 | 4000/Tape & Reel |
| SR230-TB | DO-15 | 3000/Tape & Box |
| SR230 | DO-15 | 1000 Units/Box |
| SR240-T3 | DO-15 | 4000/Tape & Reel |
| SR240-TB | DO-15 | 3000/Tape & Box |
| SR240 | DO-15 | 1000 Units/Box |
| SR250-T3 | DO-15 | 4000/Tape & Reel |
| SR250-TB | DO-15 | 3000/Tape & Box |
| SR250 | DO-15 | 1000 Units/Box |
| SR260-T3 | DO-15 | 4000/Tape & Reel |
| SR260-TB | DO-15 | 3000/Tape & Box |
| SR260 | DO-15 | 1000 Units/Box |

Products listed in **bold** are WTE **Preferred** devices.

♦T3 suffix refers to a 13" reel. TB suffix refers to Ammo Pack.

Shipping quantity given is for minimum packing quantity only. For minimum order quantity, please consult the Sales Department.

Won-Top Electronics Co., Ltd (WTE) has checked all information carefully and believes it to be correct and accurate. However, WTE cannot assume any responsibility for inaccuracies. Furthermore, this information does not give the purchaser of semiconductor devices any license under patent rights to manufacturer. WTE reserves the right to change any or all information herein without further notice.

WARNING: DO NOT USE IN LIFE SUPPORT EQUIPMENT. WTE power semiconductor products are not authorized for use as critical components in life support devices or systems without the express written approval.

Won-Top Electronics Co., Ltd.

No. 44 Yu Kang North 3rd Road, Chine Chen Dist., Kaohsiung, Taiwan

Phone: 886-7-822-5408 or 886-7-822-5410

Fax: 886-7-822-5417

Email: sales@wontop.com

Internet: http://www.wontop.com

We power your everyday.

This datasheet has been download from:

www.datasheetcatalog.com

Datasheets for electronics components.