

EDD

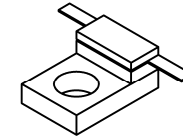
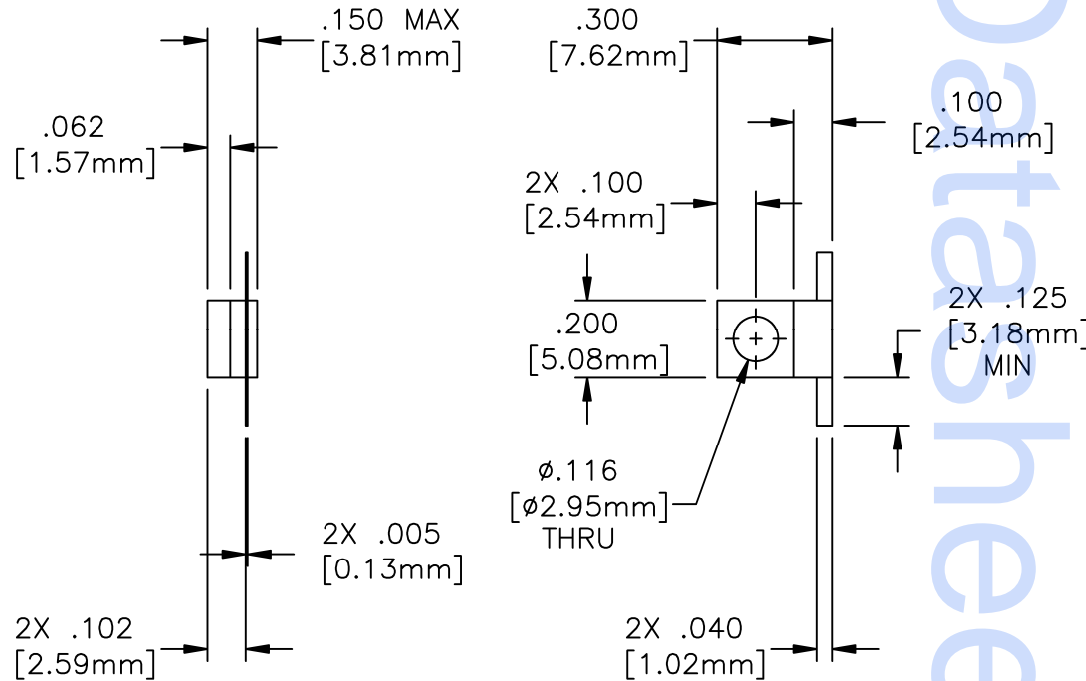
DRAWING NO.:

33-1005-*

REV.

L

NOTES:
UNLESS OTHERWISE SPECIFIED, TOLERANCES ARE $\pm .010$ " [.254mm].



MATERIALS:


FLANGE: OFHC (1/4 HD)
SUBSTRATE: BERYLLIUM OXIDE
COVER: ALUMINA
TAB: BERYLLIUM COPPER PER ASTM B194
RESISTIVE FILM: THIN FILM

FINISH:

FLANGE: NICKEL OVER COPPER
TAB: TIN/LEAD PER MIL-T-10727

TECHNICAL:

NOMINAL IMPEDANCE (OHMS): 50
FREQUENCY RANGE (GHz): DC-4.0
TEMPERATURE COEFFICIENT: ± 200 PPM/ $^{\circ}$ C MAX
OPERATING TEMP. ($^{\circ}$ C): -55° TO $+150^{\circ}$
VSWR (MAX): 1.15:1 DC-2.0 GHz
1.35:1 2.0-4.0 GHz
INPUT POWER (WATTS): 10
ATTENUATION STABILITY: .0001 dB/dB/ $^{\circ}$ C
*ATTENUATION ACCURACY: 1-10 dB ± 0.5 dB
11-20 dB ± 1.0 dB

				ECN#	N/A	APVD	DATE	REFERENCE		 8851 OLD KANSAS AVE. STUART, FL. 34997 772-286-9300					
				UNLESS OTHERWISE SPECIFIED 1. DO NOT SCALE DRAWING 2. DIMENSIONS ARE IN INCHES 3. DIMENSIONS ARE AFTER PLATING 4. CORNERS, EDGES AND FILLETS: R MAX 5. SURFACE ROUGHNESS: 6. REMOVE ALL BURRS				CATALOG							
				TOLERANCES .X \pm .XX \pm .XXX \pm ANGLES X \pm				MATERIAL	-	TITLE	ATTENUATOR, FLANGE MOUNT, 10 WATT				
L	EN08-F0098	MWS 02/13/08						FINISH	-						
K	EN 06-F0592	CRH 07/13/06		THE INFORMATION CONTAINED HEREIN IS: (A) CONSIDERED PROPRIETARY TO FLORIDA RF LABS INC.; (B) PROTECTED BY COPYRIGHT OWNED BY FLORIDA RF LABS INC.; (C) CONSIDERED A "WORK FOR HIRE" UNDER COPYRIGHT LAW; (D) PROTECTED BY TRADE SECRET LAWS WHICH MAKE ILLEGAL THE MISAPPROPRIATION OF THIS INFORMATION; AND (E) IS TO BE USED SOLELY FOR THE PURPOSE WHICH IT IS SUPPLIED. THIS INFORMATION SHALL NOT BE DISCLOSED IN WHOLE OR IN PART, TO ANY PARTY, FOR ANY REASON WITHOUT THE EXPRESS WRITTEN CONSENT OF A QUALIFIED EXECUTIVE OF FLORIDA RF LABS INC.				SCALE	CAGE CODE ID NO.	SIZE	DRAWING NO.:	REV.			
J	ECN#01279	BLP 02/20/02	OA 03/28/02					2/1	2Y194	A	33-1005-*	L			
REV.	DESCRIPTION	DRAWN	APVD.					MFG:	MJK 03/12/02	CHKD.:	DR 03/07/02	DRAWN:	BLP 02/20/02	SHEET	OF