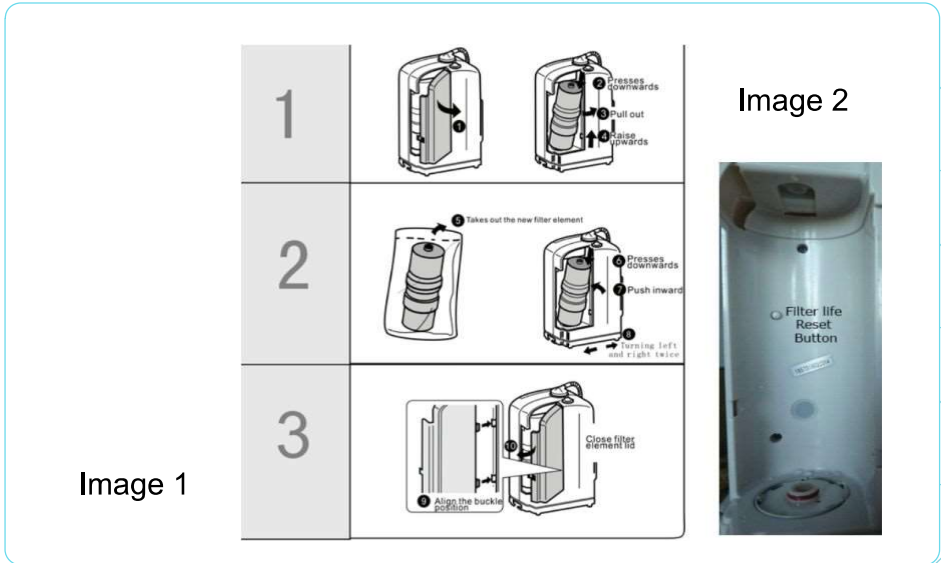


HOMAY CHI - Replacement Filter



1. Turn off water supply.
2. Open liter compartment door, see image 1: Looking from the front, the latch to open the liter door is placed on the right hand side. Swing door open to the back, then remove door temporarily. Remove the current filter, by pushing the filter down and pulling it out.
3. Reset the counter by pushing the Filter life reset button. (see image 2) A beep sound indicates that the counter is reset. In the display the counter is now set to the beginning. **(Please note: the new generation Homay filters per 5000 liters capacity or 18 months, with a maximum of 24 months lifespan. The same applies to prefilters or Bio-remineraliser).**
4. Place new filter by aligning it with the filter bottom base of the ionizer, push the cartridge down, align it with the top outlet. Once in place turn filter to make sure that it is properly sealed within the ports. Replace filter door.
5. Flush the Water ionizer for 10 minutes. The water is now suitable for drinking.