



BLACK INC
www.blackinc.cc

Stem Installation Instructions

INTRODUCTION

Congratulations on your Black Inc product. Please review thoroughly the following instructions and only follow them for correct operation and use. Should you fail to follow the following instructions and warnings, this could result in damage of the product, damage to the bicycle and in severe situations cause possible injury and or death.

Since specific tools and bicycle service experience is required for proper assembly installation, it is recommended that the product be assembled by a qualified bicycle mechanic. Black Inc assumes no responsibility for damages or injury due to improper assembly and installation of the product(s).

WARRANTY

All of Black Inc products are free of defects from materials and manufacturing defects for a period of two years starting from the original purchase date unless otherwise stated on our warranty policy detailed on our website at www.blackinc.cc.

This warranty is non-transferable and only applicable for the original customer which purchased this product only. Any modification of the product other than for its original intended use such as drilling, sanding, painting and etc. will effectively and immediately void the warranty.

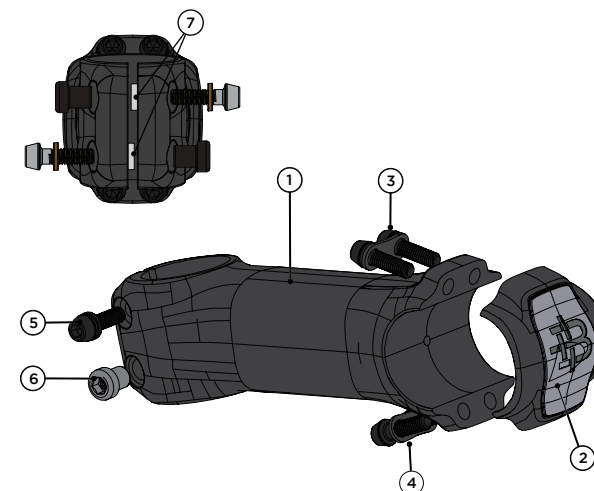
For more information on our warranty policy and instructions for completing a warranty claim please check our website for full details at www.blackinc.cc.

SPECIFICATION

Item Number / Model Name.

BLACK INC CARBON FIBER ROAD STEM -6 DEGREES 31.8 MM

Numb.	Name	QTY
1	Stem body	1
2	Stem faceplate	1
3	Stem faceplate screw	4
4	2-hole washer	2
5	Steerer bolt + washer	2
6	Steerer nut	2
7	Steerer spacer	2



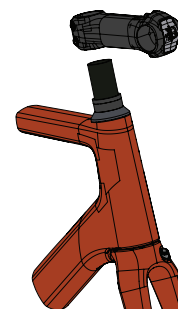
INSTALLATION PROCEDURE

Necessary tools

Torque wrench with 3, 4, 5, 6mm hex bits

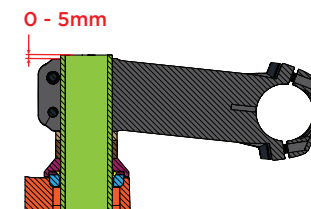
1

Place the stem on the steerer fork tube with all the spacer quantity needed.



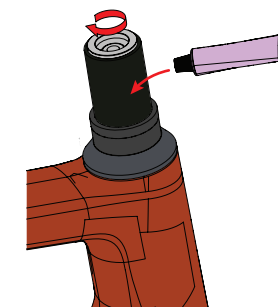
2

Cut the steerer fork tube between 0 and 5 mm above the upper surface of the stem. Grind the edge with sandpaper.



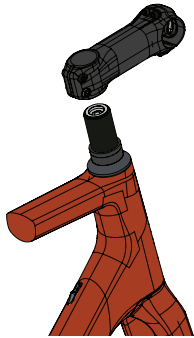
3

Insert the compression plug into the steerer fork tube until contact with the top face and tighten to **8 Nm**. Apply Black Inc Installation Compound onto the fork's steerer tube.



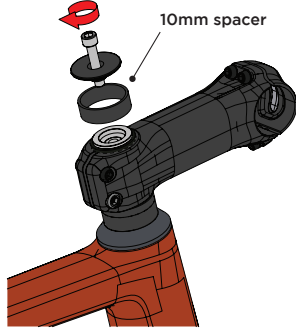
4

Mount the stem onto the steerer fork tube.



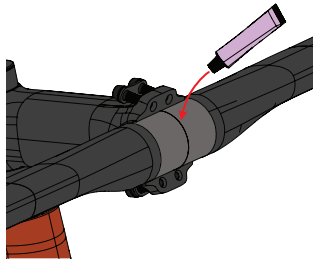
5

Place a 10 mm spacer and the top cap with bolt. Tight lightly (pre-load)



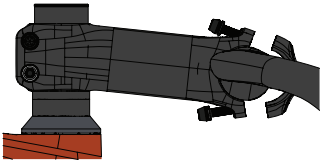
6

Apply Black Inc Installation Compound on the handlebar clamp area. Insert the handlebar between the stem body and face plate



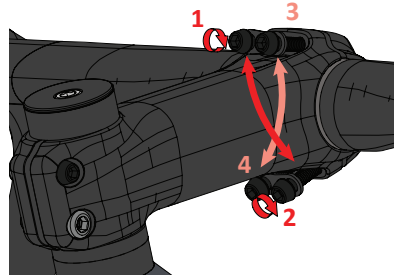
7

Install the handlebar in the same plane of the stem with the desired handlebar angle.



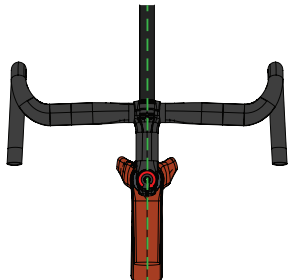
8

Apply grease to the face plate bolts (ti-prep for titanium bolts) and tighten the stem steerer fixing bolts until reaching **5.2 Nm**. In 1/4 turn increments, please remember to slowly tighten the bolts on the face plate and steerer clamp evenly to ensure even load distribution. Failure to do so could result in damaging the product and or improper installation leading to possible injury or death.



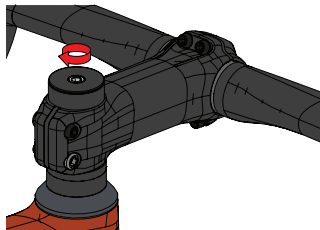
9

Align the cockpit with the front wheel in such the same plane.



10

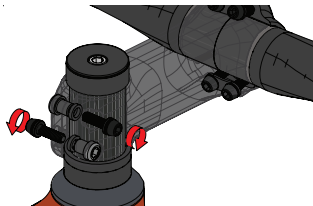
Tighten the top cap screw until no more play can be detected but careful not to over tighten. It should be tight but without restricting the headset + barstem assembly from rotating freely.



11

Tighten the steerer screws in such a way that they both receive a similar torque step by step until reach the **5.2 Nm**.

DO NOT completely tighten one screw and then the other one as this could weaken the screw's strength.



HANDLEBAR INSTALLATION TO STEM

1. Apply Black Inc Installation Compound on the handlebar clamp area. Insert the handlebar between the stem body and face plate.

2. Apply grease to the face plate bolts (ti-prep for titanium bolts) and tighten the stem steerer fixing bolts until reaching the recommended torque indicated on the stem. In 1/4 turn increments, please remember to slowly tighten the bolts on the face plate and steerer clamp evenly to ensure even load distribution. Failure to do so could result in damaging the product and or improper installation leading to possible injury or death.

⚠ WARNING! Do not go above the maximum torque labeled on the stem. Please check the handlebar for movement or slippage before every ride to ensure safe operation and regular function. If in doubt, please contact an experienced bicycle technician to ensure safe bicycle operation and usage.

⚠ WARNING! Please measure the fork steerer tube and handlebar's clamp section before installing stem. Please use an accurate measurement device such as a caliper. If installing a stem that has an under sized steerer or handlebar clamp section, this may cause the stem to not function correctly possibly resulting in slippage resulting in possible loss of control of the bicycle and resulting in possible injury to the rider and or death. Please use the Black Inc Installation Compound between the stem's steerer tube and handlebar to reduce any possibility of slippage. Please consult the fork and handlebar manufacturer for exact specifications of the clamp section to ensure safe operation.

GENERAL GUIDELINES

Handlebar Clamp Diameter 31.8 mm (+0.15 / -0.2)

Fork Steerer Tube Diameter 1 1/8" 28.6 mm (+0 / 0.1)

⚠ WARNING! The headset and fork components should be installed before the installation of the stem and handlebar. The headset and fork assembly operation requires specialized knowledge of road racing bicycles which requires specific non-standard assembly tools. For certain bicycle components, general bicycle mechanic experience may not be enough to correctly ensure correct installation of premium carbon fiber components.

It is recommended that when in doubt the headset and fork be installed by a qualified bicycle mechanic. Improper assembly of the headset, fork, stem and handle bar could lead to loss of control of the bicycle resulting in personal injury, crash and or in severe cases even death.

⚠ WARNING! Please have your product inspected regularly for possible damage and or cracks from use especially from instances such as from accidents and or crashes. If you were involved in a crash, it is strongly recommended you stop using your bicycle immediately and take your bicycle to a professional bicycle mechanic for inspection to ensure proper function and safety. Failure to do so could result in loss of control, personal injury and or death.

For more information, please visit our website at www.blackinc.cc