



LUXURY VINYL FLOORING RIGID PLANKS & TILES

INSTALLATION GUIDE

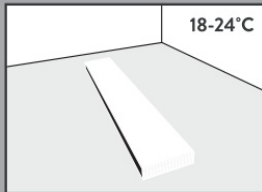
Ensure instructions are read fully before commencing installation.

Incorrect installation will invalidate any warranty.

IMPORTANT

- If flooring has been exposed to extreme temperatures for more than 2 hours (under 10°C - 50°F or over 40°C - 100°F) within 24-48 hours of installation, allow the product to acclimatise to room temperature. Prior to installation, boards must be unopened, stored flat and remain at room temperature. Room temperature must remain at a consistent 18°C - 24°C (64°F - 75°F), prior to and during installation.
- Always add an additional 10% to room area to allow for cutting waste.
- For best results, mix the planks from different packs during installation.
- This flooring is waterproof but is not to be used as a moisture barrier. The subfloor must be dry (max 2.5% moisture content). Do not install in areas that have risk of flooding or extreme temperatures. This flooring is not intended for external use.
- Room temperature after installation must remain between 18°C - 24°C (64°F - 75°F). Excessively low or high temperatures may cause this product to contract or expand and develop visual defects that will not be covered by warranty. This product is not suitable for use in conservatories.
- Do not use any additional underlay in conjunction with this product.
- Do not glue down this product.
- Packs must be stored flat.

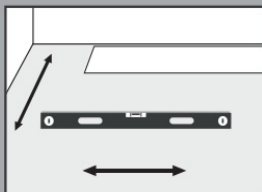
INSTALLATION GUIDE



18-24°C

Plan & Prepare

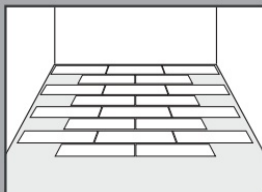
Acclimatize the plank or tile: LVT shrinks and expands as the temperature changes. The planks or tiles must be left for 24-48 hours at room temperature before laying. Mix the planks or tiles: Every colourway has a unique design, this design will run across several planks or tiles. To ensure that you have a more natural look to your finished floor, always mix the planks or tiles from several packs before laying. Always ensure that the surface area is clean and free of any rubbish or debris.



Check the Substrate

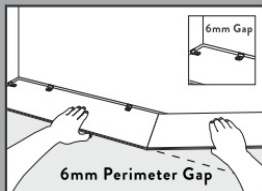
Using a spirit level or straight edge, check that the floor is level in both directions at random points across the floor.

Measure the biggest gap and ensure it is no bigger than 5mm within a 3 metre or 10ft area.



Plan the Layout

To give you a sense of what the overall floor will look like, it is best to have a 'dry run', where you lay out a large number of planks or tiles. As LVT is lightweight, the boards can easily be moved around to give you the best overall effect. Most rooms are not perfectly square, it is easy to notice planks and tiles that are cut on an angle. This is particularly obvious at doorways. To achieve a more professional finish, it is better to move the problem elsewhere within the room where its less visible.

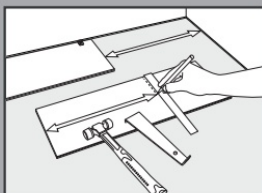


6mm Gap

6mm Perimeter Gap

Installation Tips

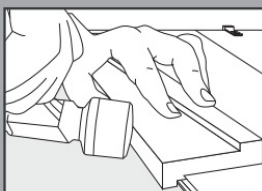
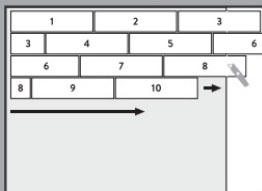
Always leave an expansion gap between the plank or tile and the wall. Either use an expansion strip or spacer as a guide.



Begin laying the first row, by working left to right with the groove facing towards you. Once you get to the end of the row, measure and cut the plank or tile to size and use a pull bar to lock it in to place.

To create a more natural look, always stagger the planks by using this offcut as a starting point for the next row. This needs a minimum length to 30cm.

Always click the short side in first and then the long side at a small angle. All planks and tiles should be the same height and perfectly aligned. We recommend using a double lipped tapping block and rubber mallet to fully lock each plank or tile into place.

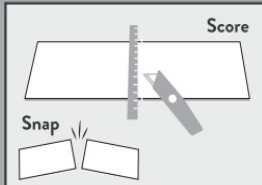


Cutting

Score the plank or tile 2-3 times with a knife (a concave bladed knife is better to use on vinyl flooring) and then snap. It is easier to snap the board on the edge of a table or worktop.

As the planks and tiles have integrated underlay this will need cutting separately.

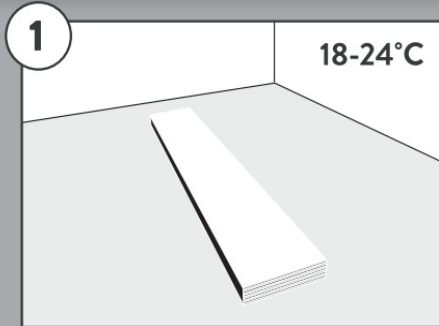
A LVT cutter is another way of cutting LVT, this is a much faster method.



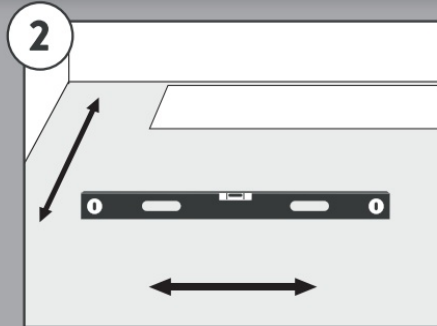
Score

Snap

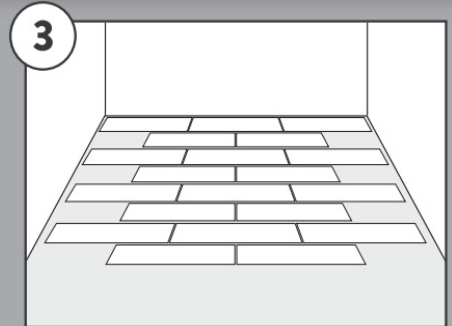
INSTALLATION GUIDE



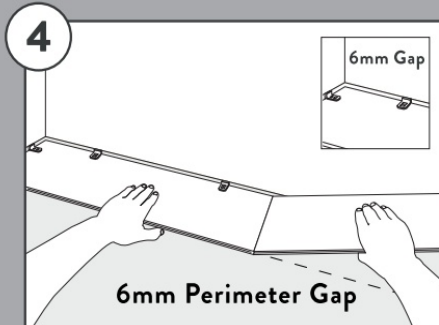
Acclimatize the plank or tile



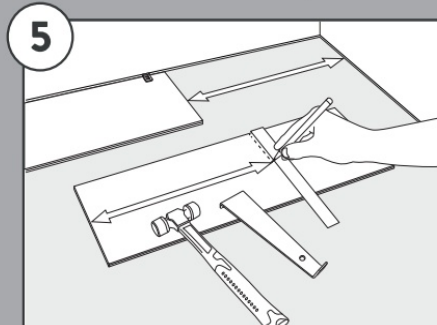
Check the floor is level in both directions at random points



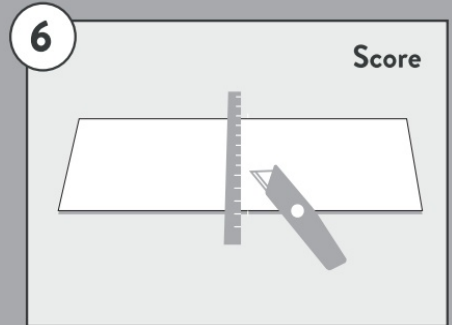
Create a 'dry run' on the floor



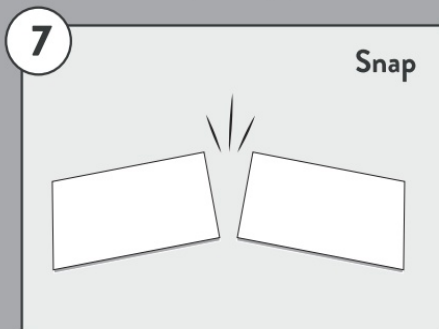
Ensure you leave a minimum 6mm expansion gap



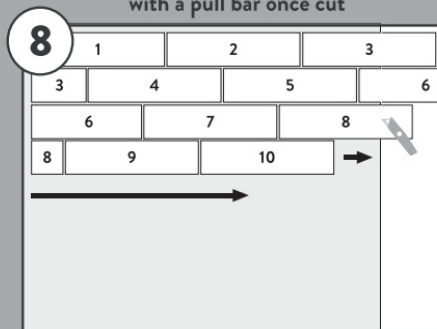
At the end of the first row measure the size of the plank required and lock in to place with a pull bar once cut



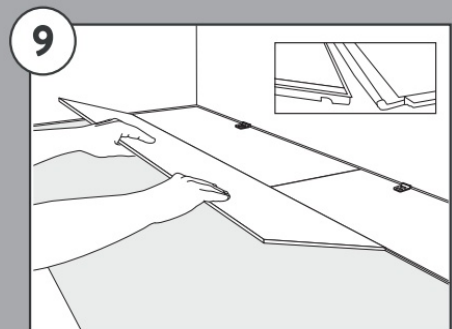
To cut, simply score with a knife 2-3 times



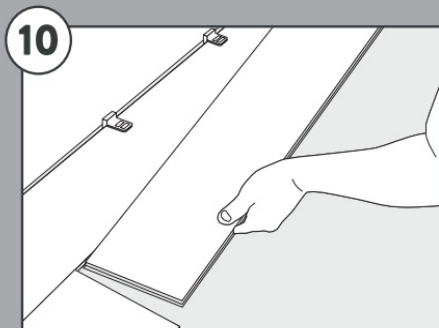
Snap the plank or tile once scored



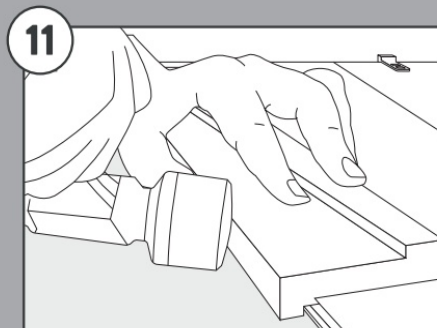
Use the offcut from each row to start the next row



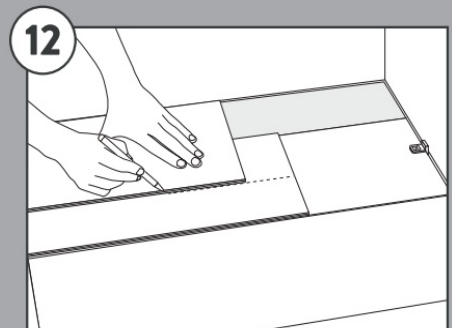
Start the next row by clicking at an angle



Always click the short side in first



We recommend using a double lipped tapping block and rubber mallet to fully lock each plank or tile into place



Final row: position a loose plank or tile on top of the last row laid. Place another plank or tile on top, with the tongue side touching the wall. Draw a line and cut. Insert against the wall.