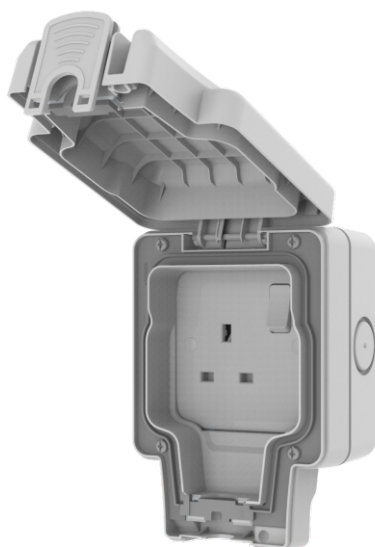


DATASHEET

BRWP035 /BRWP036

White IP 66 13A Switched Socket

www.thrion.co.uk



PART CODE	BRWP035	BRWP036
DESCRIPTION	IP 66 1G 13A DP Switched Socket	IP 66 2G 13A DP Switched Socket
FINISH	White	
DIMENSIONS (MM)	110 X 156 X 88.5	170 X 156 X 88.5
INPUT VOLTAGE	Mains 250V a.c.	
MAXIMUM LOAD (A)	13	
TERMINAL CAPACITY	3 x 2.5mm ² or 3 x 4mm ² or 2 x 6mm ²	
IP RATING	IP 66	
WARRANTY	10 years	
ORIGIN OF MANUFACTURE	China	
DECLARATION OF CONFORMITY (HELD ON FILE)	Yes	
MANUFACTURED IN ACCORDANCE WITH	BS 1363-2 / BS EN 60529	