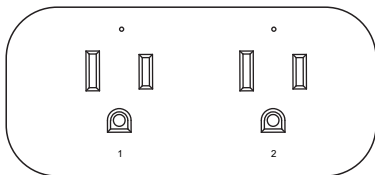


***Jewenwils***

## **Remote Control Outlet**

SKU: HRLS11W  
[Instruction Manual]



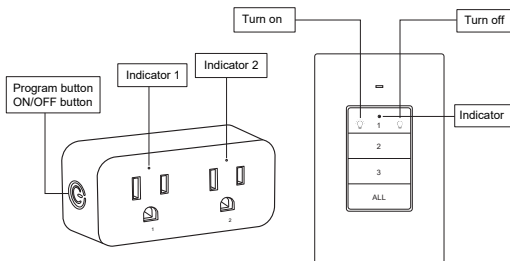
Please pay attention to the warning signs  
Read the instructions with caution before operating  
and keep it properly

## Warning:

**To reduce the risk of fire, electric shock or personal injury, please strictly follow the instructions.**

1. Do not immerse in water.
2. Do not connect any devices which may exceed the maximum ratings of this remote outlet.
3. Do not disassemble or repair the product, but only by authorized service personnel.
4. Children are not allowed to use the remote outlets without supervision.
5. To prevent children from suffocation and choking, keep them away from packaging materials.
6. Used batteries should be disposed of safely and environmentally.

## Product Layout



## Operating Instructions

Notes: The receiver must be located within 100 feet of the remote transmitter. Actual functional range may be affected by the following factors: weather, radio frequency interference, low remote battery, and obstructions between the transmitter and receiver.

1. Remove the isolation tap in the battery compartment on the transmitter.
2. Plug the receiver into a powered outlet.
3. Plug your device into the socket of the receiver.
4. To control your matching devices:
  - 1) Press the ON/OFF button on the transmitter.
  - 2) Or press the program button on the receiver.
  - 3) The indicator light of the receiver lights up when the unit is activated.

## **Programming the Outlets**

Note: The transmitter and receiver have been pre-programmed for immediate use, but the configuration can be customized to meet your needs.

### **To program the remote transmitter with the receiver:**

Step 1: To program the Socket 1 of the receiver:

1. Plug the receiver into outlet.
2. Press and hold the program button for about 3 seconds until indicator 1 flashes slowly.
3. Release the program button, then press the ON button (1) on the transmitter, after 1 second, press the OFF button (1).
4. Indicator 1 stops flashing and stays on means that Socket 1 of the receiver has been programmed successfully.

Step 2: To program the Socket 2 of the receiver:

1. Press and hold the program button for about 6 seconds until the indicator 2 flashes slowly.
2. Release the program button, then press the ON button (2) on the transmitter, after 1 second, press the OFF button (2).
3. Indicator 2 stops flashing and stays on means that Socket 2 of the receiver has been programmed successfully.

## **Cancelling All Programming**

Cancel all programming so that no remote transmitter can control this receiver.

1. Plug the receiver into outlet.
2. Press the program button on the receiver for about 9 seconds until indicator 1 and indicator 2 flash rapidly at the same time.

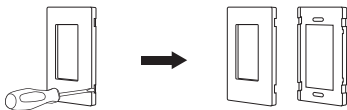
(Note: The flashing status of indicators go from: indicator 1 flashes slowly - indicator 2 flashes slowly - indicator 1 and indicator 2 flash rapidly simultaneously)

3. Release the program button and press it again, the indicator will go out, and all programming will be canceled.

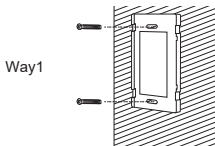
## No Interference

Remote control outlets adopt variable learning codes technology. The codes will be changed each time after re-programming. If this remote control outlet happens to be in the same channels with other RF remote devices, just re-program it and the interference will be eliminated.

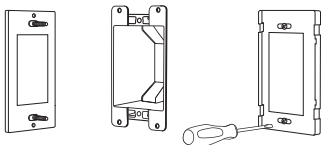
## Mounting the Wall Switch



1. Separate the upper and lower shells of the Wall Switch.



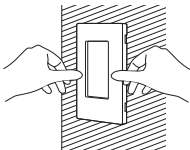
Way2



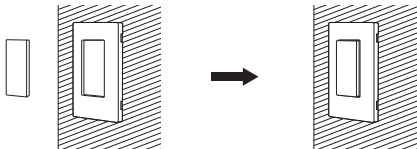
## 2. Install Wall Plate

Way1: Secure the lower housing of the wall switch to the wall using the provided mounting screws.

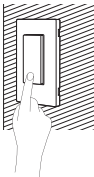
Way2: Secure the lower housing of the wall switch inside the wall box using the provided mounting screws.



## 3. Attach the upper shell to the lower shell.



## 4. Attach the transmitter to the base.



5. Press the buttons of the switch to turn on/off the light socket: left button to turn on, right button to turn off.

## Battery Replacement

If you find the receivers works abnormally or the indicator on the remote control becomes dim, please replace the battery.

- Open the battery compartment and remove the old battery.
- Install a new CR2032 battery, making sure the polarity + / - of the battery is correct.
- Close the battery compartment.

## Specifications

- Input Voltage: 125VAC, 60Hz
- Max Power Rating: 15A, 1875W
- Transmission Frequency: 433.92 MHz
- Remote Control Range : 100 Feet (Free Area)
- Remote Battery: CR2032 3V

## FCC STATEMENT

This device complies with Part 15 of the FCC rules. Operation is subject to the following two conditions:

- 1) this device may not cause harmful interference, and 2) this device must accept any interference received, including interference that may cause undesired operation.

Changes or modifications not expressly approved by the party responsible for compliance could void your authority to operate the equipment.

NOTE: This equipment has been tested and found to comply with the limits for a Class B digital device, pursuant to Part 15 of the FCC Rules. These limits are designed to provide reasonable protection against harmful interference in a residential installation.

This equipment generates uses and can radiate radio frequency energy and, if not installed and used in accordance with the instructions, may cause harmful interference to radio communications. However, there is no guarantee that interference will not occur in a particular installation. If this equipment does cause harmful interference to radio or television reception, which can be determined by turning the equipment off and on, the user is encouraged to try to correct the interference by one or more of the following measures:

- Reorient or relocate the receiving antenna.
- Increase the separation between the equipment and receiver.
- Connect the equipment into an outlet on a circuit different from that to which the receiver is connected.
- Consult the dealer or an experienced radio/TV technician for help.

### **ISED Warning:**

This device complies with Innovation, Science, and Economic Development Canada licence-exempt RSS standard(s). Operation is subject to the following two conditions:

- (1) this device may not cause interference, and
- (2) this device must accept any interference, including interference that may cause undesired operation of the device.

Le présent appareil est conforme aux CNR d'Innovation, Sciences et Développement économique Canada applicables aux appareils radio exempts de licence. L'exploitation est autorisée aux deux conditions suivantes :

- (1) l'appareil n' doit pas produire de brouillage, et
- (2) l'utilisateur de l'appareil doit accepter tout brouillage radioélectrique subi, même si le brouillage est susceptible d'en compromettre le fonctionnement.

The device is compliance with RF exposure guidelines, users can obtain Canadian information on RF exposure and compliance.

Le présent appareil est conforme Après examen de ce matériel aux conformité ou aux limites d'intensité de champ RF,les utilisateurs peuvent sur l'exposition aux radiofréquences et la conformité and compliance d'acquérir les informations correspondantes.

## **One Year Limited Warranty**

Supported by our professional R&D team and QC team, we provide One Year Warranty for materials and workmanship from the purchase date. Please note that the warranty does not cover damage caused by personal misuse or improper installation.

Please attach your Order ID and Name so that our dedicated customer service team can help you better.

