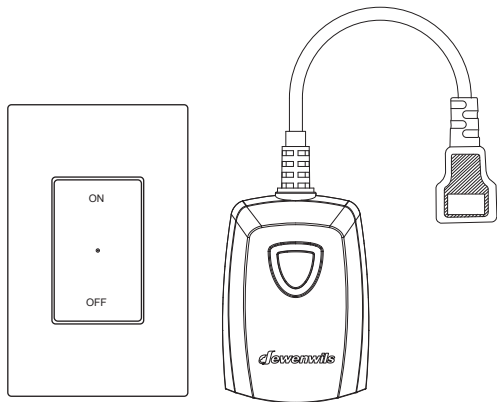


Jewenwils

Outdoor Remote Control Outlet

[Instruction Manual]



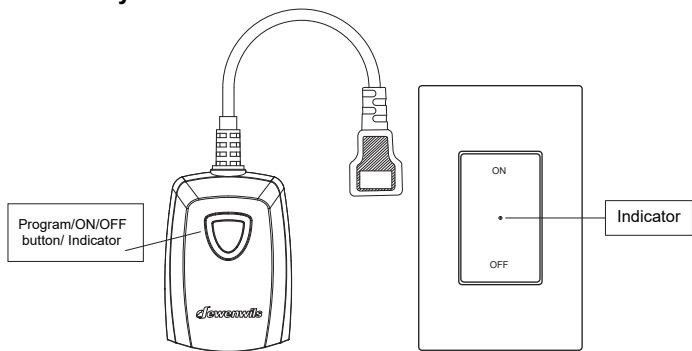
Please pay attention to the warning signs
Read the instructions with caution before operating
and keep it properly

Warning:

To reduce the risk of fire, electric shock or personal injury, please strictly follow the instructions.

1. To prevent water immersion, the outlet must be mounted in a vertical position with the outlets facing downward and at least 2ft above the ground level.
2. Do not immerse in water.
3. Do not connect any devices which may exceed the maximum ratings of this remote outlet.
4. Do not disassemble or repair the product, but only by authorized service personnel.
5. Children are not allowed to use the remote outlets without supervision.
6. To prevent children suffocation and choking, keep them away from packaging materials.
7. Used batteries should be disposed safely and environmentally.

Product Layout



Operating Instructions

Notes: The receiver must be located within 100 feet of the remote transmitter. Actual functional range may be affected by the following factors: weather, radio frequency interference, low remote battery, and obstructions between the transmitter and receiver.

1. Remove the isolation tap in the battery compartment on the transmitter.
2. Plug the receiver into a powered outlet.
3. Plug your device into the socket of the receiver.
4. To control your matching devices:
 - 1) Press the ON/OFF button on the transmitter.
 - 2) Or press the programming button on the receiver.
 - 3) The indicator light of the receiver turns on when the unit is activated.

Programming the Outlets

Note: The transmitter and receiver have been pre-programmed for immediate use, but the configuration can be customized to meet your needs.

To program a remote transmitter and receiver:

1. Plug the receiver into an outlet.
2. Press the programming button on the receiver until the indicator light begins to flash slowly.
3. Release the button and press ON button, then OFF button on your transmitter.
4. The indicator light stops flashing and keeps on indicates that the programming has already been setted up successfully.

Repeat Step 1-4 to pair multiple transmitters and receivers.

Cancelling All Programming

Cancel all programming so that no remote transmitter can control it:

- Press the programming button on the receiver until the indicator light begins to flash rapidly

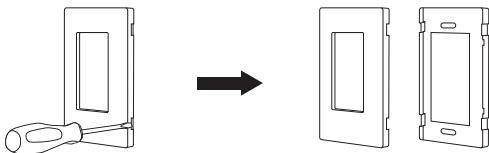
Note: The light flashes from slowly to rapidly.

- Release the programming button and then press it again. The indicator light will be off. All the programming has been canceled.

No Interference

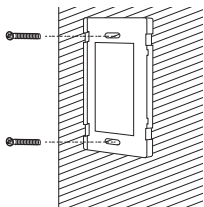
Remote control outlets adopt variable learning codes technology. The codes will be changed each time after re-programming. If this remote control outlet happens to be in the same channels with other RF remote devices, just re-program it and the interference will be eliminated.

Mounting the Wall Switch

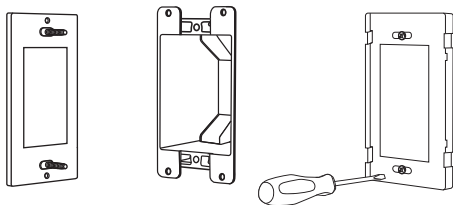


1. Separate the upper and lower shells of the Wall Switch.

Way1



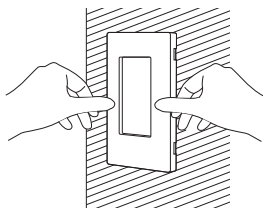
Way2



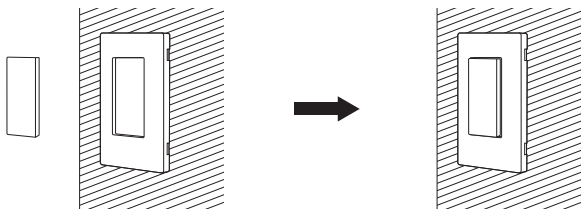
2. Install Wall Plate

Way1: Secure the lower housing of the wall switch to the wall using the provided mounting screws.

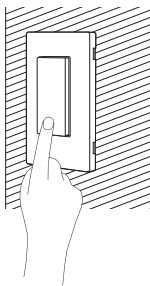
Way2: Secure the lower housing of the wall switch inside the wall box using the provided mounting screws.



3. Attach the upper shell to the lower shell.



4. Attach the transmitter to the base.



5. Press the ON/OFF button on the wall switch remote control to turn the receiver on and off.

Battery Replacement

If you find the receivers works abnormally or the indicator on the remote control becomes dim, please replace the battery.

- Open the battery compartment and remove the old battery.
- Install a new CR2032 battery, making sure the polarity + / - of the battery is correct.
- Close the battery compartment.

Specifications

- Input Voltage: 125VAC 60Hz
- Max. Current: 15A Resistive
8A tungsten lamp
- Transmission Frequency: 433.92MHz
- Remote Battery: CR2032

FCC STATEMENT

This device complies with Part 15 of the FCC rules. Operation is subject to the following two conditions:

1) this device may not cause harmful interference, and 2) this device must accept any interference received, including interference that may cause undesired operation.

Changes or modifications not expressly approved by the party responsible for compliance could void your authority to operate the equipment.

NOTE: This equipment has been tested and found to comply with the limits for a Class B digital device, pursuant to Part 15 of the FCC Rules. These limits are designed to provide reasonable protection against harmful interference in a residential installation.

This equipment generates uses and can radiate radio frequency energy and, if not installed and used in accordance with the instructions, may cause harmful interference to radio communications. However, there is no guarantee that interference will not occur in a particular installation. If this equipment does

cause harmful interference to radio or television reception, which can be determined by turning the equipment off and on, the user is encouraged to try to correct the interference by one or more of the following measures:

- Reorient or relocate the receiving antenna.
- Increase the separation between the equipment and receiver.
- Connect the equipment into an outlet on a circuit different from that to which the receiver is connected.
- Consult the dealer or an experienced radio/TV technician for help.

One Year Limited Warranty

Supported by our professional R&D team and QC team, we provide One Year Warranty for materials and workmanship from the purchase date. Please note that the warranty does not cover damage caused by personal misuse or improper installation.

Please attach your Order ID and Name so that our dedicated customer service team can help you better.

