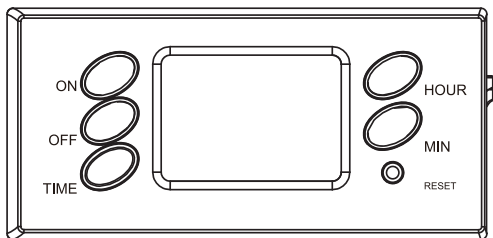


Jewenwils

Indoor Digital Timer

SKU: HDTI22C
[Instruction Manual]

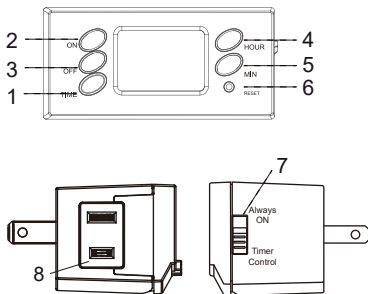


Please pay attention to the warning signs
Read the instructions with caution before operating
and keep it properly

Warning: To reduce the risk of fire, electric shock or personal injury, please strictly follow the instructions.

1. Do not connect any devices which may exceed the maximum ratings of this timer.
2. Children are not allowed to use the timer without supervision.
3. Do not disassemble or repair the product, but only by authorized service personnel.
4. Unplug the timer before cleaning.
5. Do not control appliance that contain heating elements such as cooking appliances, heaters, and irons.

Button Layout



Operating Instructions

Before initial use, plug the timer in for at least 30 minutes to charge the internal battery. After the screen displays, the unit is ready for programming.

NOTE: Only the "PM" icon will display on the bottom right portion of the screen; during the "AM" time frame, no icon will be displayed.

1.Set the Clock

- Press and hold the TIME button, and then press the HOUR button to set the current hour;
- Press and hold the TIME button, and then press the MIN button to set the current minute;
- Release the TIME button and the timer will display the current time.

2.Set the ON Time

- Press and hold the ON button, and then press the HOUR button to set the hour ;
- Press and hold the ON button, and then press the MIN button to set the minute;
- Release the ON button, the timer will display the current time and ON time has been programmed.

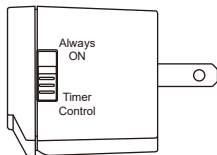
3.Set the OFF Time

- Press and hold the OFF button, and then press the HOUR button to set the hour;
- Press and hold the OFF button, and then press the MIN button to set the minute;
- Release the OFF button, the timer will display the current time and OFF time has been programmed.

4.Side Switch

Always ON: The power will stay on regardless of the previous timer setting.

Timer Control:The timer will control the plugged-in device according to the times-event previously programme.



Specifications

Input Voltage: 125VAC,60Hz

Max Power Rating: 15 A General Purpose

15A Resistive

1000W Tungsten

500VA Electronic Ballast

20 VAC 60Hz, 8.3A Standard Ballast

1/2 HP

Safety Information

Federal Communications Commission Interference Statement

This equipment has been tested and found to comply with the limits for Class B digital device, pursuant to part 15 of the FCC Rules. These limits are designed to provide reasonable protection against harmful interference in a residential installation. This equipment generates, uses and can radiate radio frequency energy and, if not installed and used in accordance with the instructions, may cause harmful interference to radio or television reception, which can be determined by turning the equipment off and on, the user is encouraged to try to correct the interference by one or more of the following measures:

- Reorient or relocate the receiving antenna.
- Increase the separation between the equipment and the receiver.
- Connect the equipment into an outlet on a circuit different from that to which the receiver is connected.
- Consult the dealer or an experienced radio/TV technician for help.

This device complies with Part 15 of the FCC Rules. Operation is subject to the following two conditions:

(1) this device may not cause interference, and(2) this device must accept any interference, including interference that may cause undesired operation of the device.

FCC Caution: Any changes or modifications not expressly approved by the party responsible for compliance could void the user's authority to operate this equipment

One Year Limited Warranty

Supported by our professional R&D team and QC team, we provide One Year Warranty for materials and workmanship from the purchase date. Please note that the warranty does not cover damage caused by personal misuse or improper installation.

Please attach your Order ID and Name so that our dedicated customer service team can help you better.

