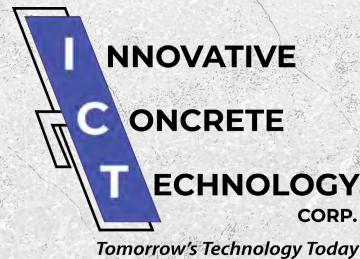




**BEFORE**

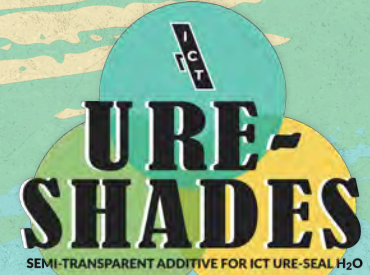
**AFTER**

Semi-transparent products from ICT are designed to work well with various substrates and projects. These products are also manufactured to be V.O.C. compliant in all 50 states. The semi-transparent finish allows for the characteristics of the substrate to be slightly visible, creating a natural appearance. Common uses include pool decks, driveways, patios, brick pavers, and other concrete and masonry surfaces.



2410 McJunkin Rd  
Lakeland, FL 33803  
888-296-5236

[www.innovativeconcrete.com](http://www.innovativeconcrete.com)



**SEMI-TRANSPARENT  
CONCRETE  
COLOR SYSTEMS**







**Ure-Shades (155)** is a concentrated liquid pigment additive for Ure-Seal H<sub>2</sub>O to seal, protect, and color properly prepared concrete, concrete pavers, or masonry surfaces in one easy process.



**Water Shades (310)** is an environmentally-friendly, ready-to-use alternative to concrete acid stains designed to enhance the natural look and profile of concrete, concrete pavers, or masonry surfaces. Water Shades can be used in a variety of different methods to obtain a unique finish with an artistic edge. Water Shades also works in conjunction with Texture-Krete 2000, Stamp It 4000, and other cementitious overlay systems.



Water Shades applied to stamped decorative concrete

# COLOR SELECTOR

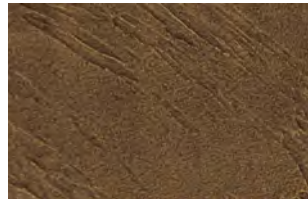
Note: Colors may vary depending on the substrate being treated and number of coats applied.



**BARNACLE**



**CORAL DUST**



**ENGLISH WALNUT**



**NAUTICAL BLUE**  
(Water Shades only. Indoor use only)



**SAGE GREEN**



**BRICK RED**



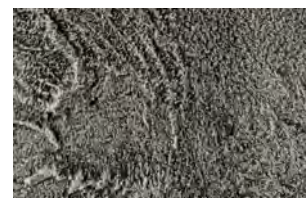
**DESERT GOLD**



**GRANITE GRAY**



**RED CLAY**



**SLATE BLACK**



**CANYON BROWN**



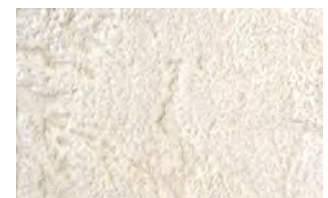
**DOUBLE TAN**



**GRAY WASH**  
(Ure-Shades only)



**SADDLE TAN**



**WHITE WASH**